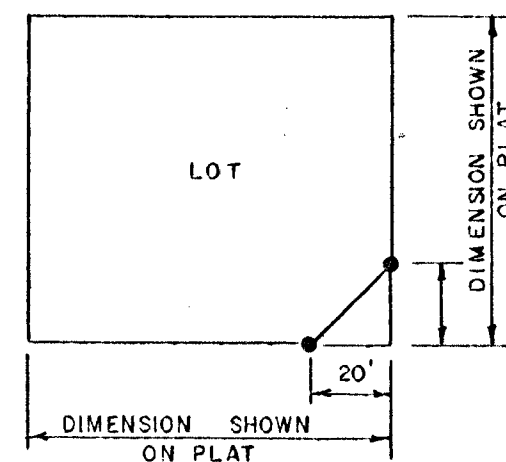
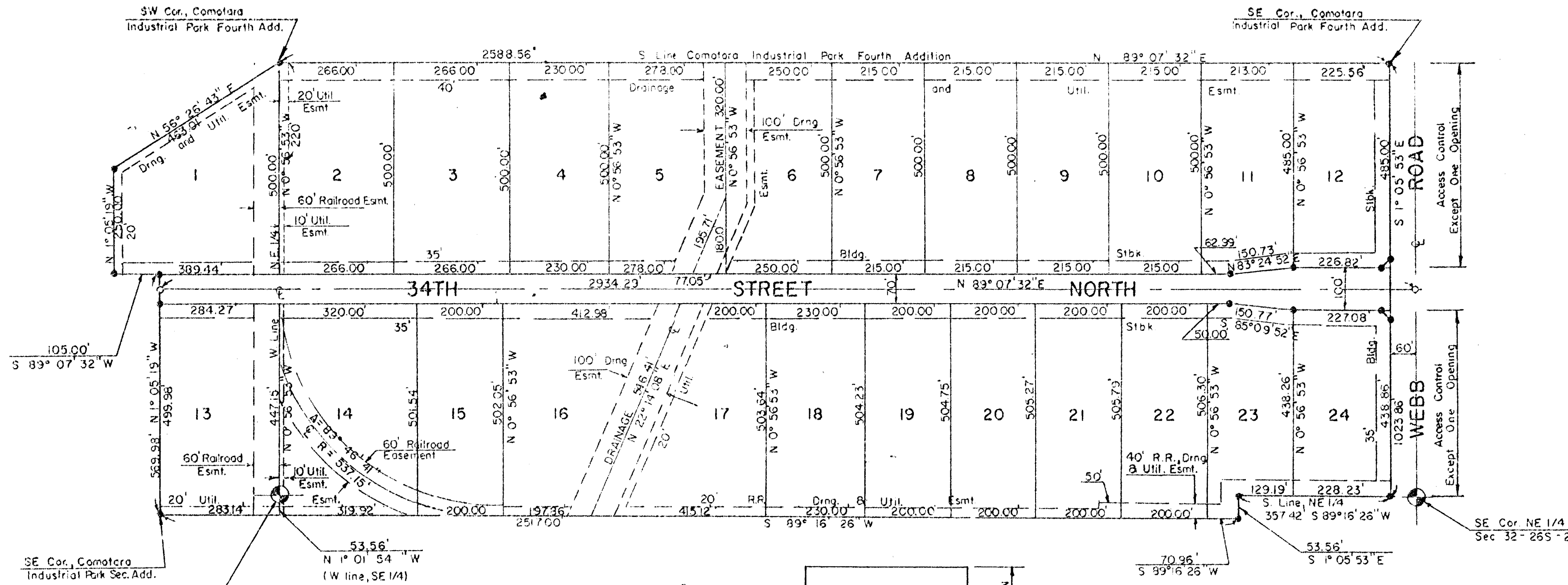


FINAL PLAT OF COMOTARA INDUSTRIAL PARK FIFTH ADDITION

AN ADDITION TO WICHITA, SEDGWICK COUNTY, KANSAS

SCALE 1"=200'



I, the undersigned, a Land Surveyor in Kansas, do hereby certify that this plat is a true and correct copy of the original plat as shown to me by the undersigned owners of a portion of the land above set forth in the accompanying plat and that the same is hereby dedicated to and for the use of the public.

Results in a portion of Block 4, Comotara Business Park Addition to Wichita, Sedgewick County, Kansas located in Section 32, T. 16 S., R. 15 E. of the 25th 3M, more accurately described as follows: Beginning at the southeast corner of Comotara Industrial Park Fourth Addition, an addition to Wichita, Sedgewick County, Kansas; thence along the east line of Webb Road bearing S 1° 05' 53" E. 438.00 feet to the south line of the northeast quarter of said Section 32; thence along said south line bearing S 89° 16' 26" W. 228.23 feet; thence S 1° 05' 53" E. 53.56 feet; thence S 89° 16' 26" W. 228.23 feet to the southeast corner of Comotara Industrial Park Second Addition, an addition to Wichita, Sedgewick County, Kansas; thence N 1° 25' 13" W. 569.88 feet; thence S 89° 07' 32" E. 215.00 feet; thence N 1° 05' 53" E. 258.56 feet to the point of beginning, containing 3.19 acres, more or less.

I hereby certify that the details of this plat are correct to the best of my knowledge and belief this 22nd day of November 1978.

Steven E. Anderson
Steven E. Anderson
Surveyor
200 N. Rock Road Suite 150
Wichita, Kansas 67206

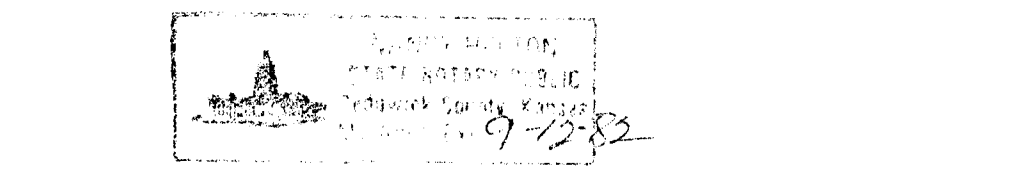
Know all men by these presents that we the undersigned owners of a portion of the land as above set forth in the Land Surveyor's Certificate, have caused the same to be surveyed and platted into lots and a street, the same to be known as "Comotara Industrial Park Fifth Addition" to Wichita, Sedgewick County, Kansas. The street is hereby dedicated to and for the use of the public. Easements for the construction and maintenance of public utilities and drainage, as indicated on the accompanying plat are hereby granted. All easement rights of access over and across the west line of Webb Road are hereby granted to the City of Wichita, provided, however, that lots 12 and 24 shall have access to Webb Road at one location to be determined by the City Engineer of Wichita, Kansas.

Realty Investment
By: *Terrence J. Stanton*
Terrence J. Stanton, Partner

We the Fourth National Bank and Trust Company, Wichita, Kansas, mortgagees in Lots 2 through 5 inclusive within the above described property do hereby consent to the plat of "Comotara Industrial Park Fifth Addition".
The Fourth National Bank and Trust Company, Wichita, Kansas
By: *W. Newman*
W. Newman, Vice President

STATE OF KANSAS, COUNTY OF SEDGWICK, ss:
Be it remembered on this 22nd day of November 1978, before me, a Notary Public in and for said State and County, came the Fourth National Bank and Trust Company, Wichita, Kansas, by J. O. Newman, Vice President for the Fourth National Bank and Trust Company, to me personally known to be the same person who executed the foregoing instrument of writing and duly acknowledged the execution of the same. In testimony whereof, I have hereunto set my hand and affixed my notarial seal the day and year above written.

W. Newman Notary Public
My Appointment Expires: 9-12-80



Know all men by these presents that we the undersigned owners of a portion of the land as above set forth in the Land Surveyor's Certificate, have caused the same to be surveyed and platted into lots and a street, the same to be known as "Comotara Industrial Park Fifth Addition" to Wichita, Sedgewick County, Kansas. The street is hereby dedicated to and for the use of the public. Easements for the construction and maintenance of public utilities and drainage, as indicated on the accompanying plat are hereby granted. All easement rights of access over and across the west line of Webb Road are hereby granted to the City of Wichita, provided, however, that lots 12 and 24 shall have access to Webb Road at one location to be determined by the City Engineer of Wichita, Kansas.

Nichita Development Company
By: *Robert R. Fox*
Robert R. Fox
Attorney in fact for Nichita Development Company

STATE OF KANSAS, COUNTY OF SEDGWICK, ss:
Be it remembered that on this 21st day of November 1978, before me, a Notary Public in and for said State and County, came the Nichita Development Company, by Robert R. Fox, attorney in fact for Nichita Development Company, to me personally known to be the same person who executed the foregoing instrument of writing and duly acknowledged the execution of the same. In testimony whereof, I have hereunto set my hand and affixed my notarial seal the day and year above written.

Carolyn R. Owen Notary Public
Carolyn R. Owen
My Appointment Expires: May 12, 1981



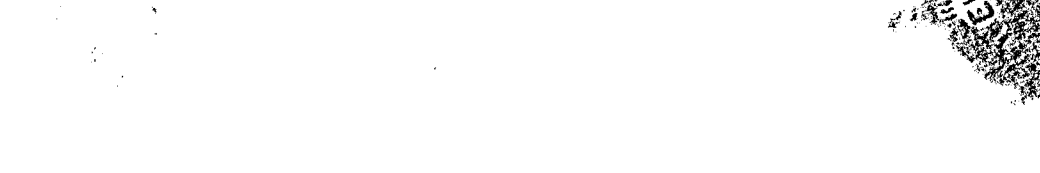
STATE OF KANSAS, COUNTY OF SEDGWICK, ss:
Be it remembered that on this 21st day of November 1978, before me, a Notary Public in and for said State and County, came Terrence Investment, by Terrence Stanton, Partner, to me personally known to be the same person who executed the foregoing instrument of writing and duly acknowledged the execution of the same. In testimony whereof, I have hereunto set my hand and affixed my notarial seal the day and year above written.

Carolyn R. Owen Notary Public
Carolyn R. Owen
My Appointment Expires: May 12, 1981

We the Citibank, N.A., New York City, New York, mortgagees on the above described property do hereby consent to the plat of "Comotara Industrial Park Fifth Addition".
The Citibank, N.A., New York, New York
By: *Robert R. Fox*
Robert R. Fox
Attorney in fact for Citibank, N.A.

STATE OF KANSAS, COUNTY OF SEDGWICK, ss:
Be it remembered on this 21st day of November 1978, before me, a Notary Public in and for said State and County, came the Citibank, N.A., New York City, New York, by Robert R. Fox, attorney in fact for Citibank, N.A., to me personally known to be the same person who executed the foregoing instrument of writing and duly acknowledged the execution of the same. In testimony whereof, I have hereunto set my hand and affixed my notarial seal the day and year above written.

Carolyn R. Owen Notary Public
Carolyn R. Owen
My Appointment Expires: May 12, 1981



This plat approved and all dedications shown hereon, if any, accepted by the Board of County Commissioners of Sedgewick County, Kansas this 22nd day of November 1978.

Everett F. Patrick Chairman
Carl F. Scott Commissioner
John H. Smith Commissioner
Attest: *Debra K. White* County Clerk
Debra K. White

STATE OF KANSAS, COUNTY OF SEDGWICK, ss:
This is to certify that this instrument was filed for record in the Register of Deeds Office at 10:34 AM on the 21st day of November 1978.

Bette F. McClart Register of Deeds
Bette F. McClart
Pat Kattalin Deputy
Pat Kattalin

This plat of "Comotara Industrial Park Fifth Addition" has been submitted to and approved by the Wichita-Sedgewick County Metropolitan Area Planning Commission, Wichita, Kansas.
Dated this 26th day of October 1978.
Wichita-Sedgewick County Metropolitan Area Planning Commission
By: *Jerry Schneider* Chairman
Jerry Schneider
By: *Robert A. Rubin* Secretary
Robert A. Rubin

This plat approved and all dedications shown hereon, if any, accepted by the City Commission of the City of Wichita, Kansas this 21st day of December 1978.
Conrad A. Pita Mayor
Conrad A. Pita
Donald G. Glick City Clerk
Donald G. Glick
Entered on transfer record this 21st day of December 1978.
Deborah K. White County Clerk
Deborah K. White

We the Boeing Wichita Company, a division of Boeing Company, lease of lots 2 through 5 inclusive within the above described property do hereby consent to the plat of "Comotara Industrial Park Fifth Addition".
Boeing Wichita Company, a division of Boeing
By: *E. B. Robinson*
E. B. Robinson
Director of Legal Department

STATE OF KANSAS, COUNTY OF SEDGWICK, ss:
Be it remembered on this 22nd day of November 1978, before me, a Notary Public in and for said State and County, came the Boeing Wichita Company, a division of Boeing Company, by E. B. Robinson, Director of Legal Department for the Boeing Wichita Company, to me personally known to be the same person who executed the foregoing instrument of writing and duly acknowledged the execution of the same. In testimony whereof, I have hereunto set my hand and affixed my notarial seal the day and year above written.

Martha A. Hanson Notary Public
Martha A. Hanson
My Appointment Expires: May 24, 1980