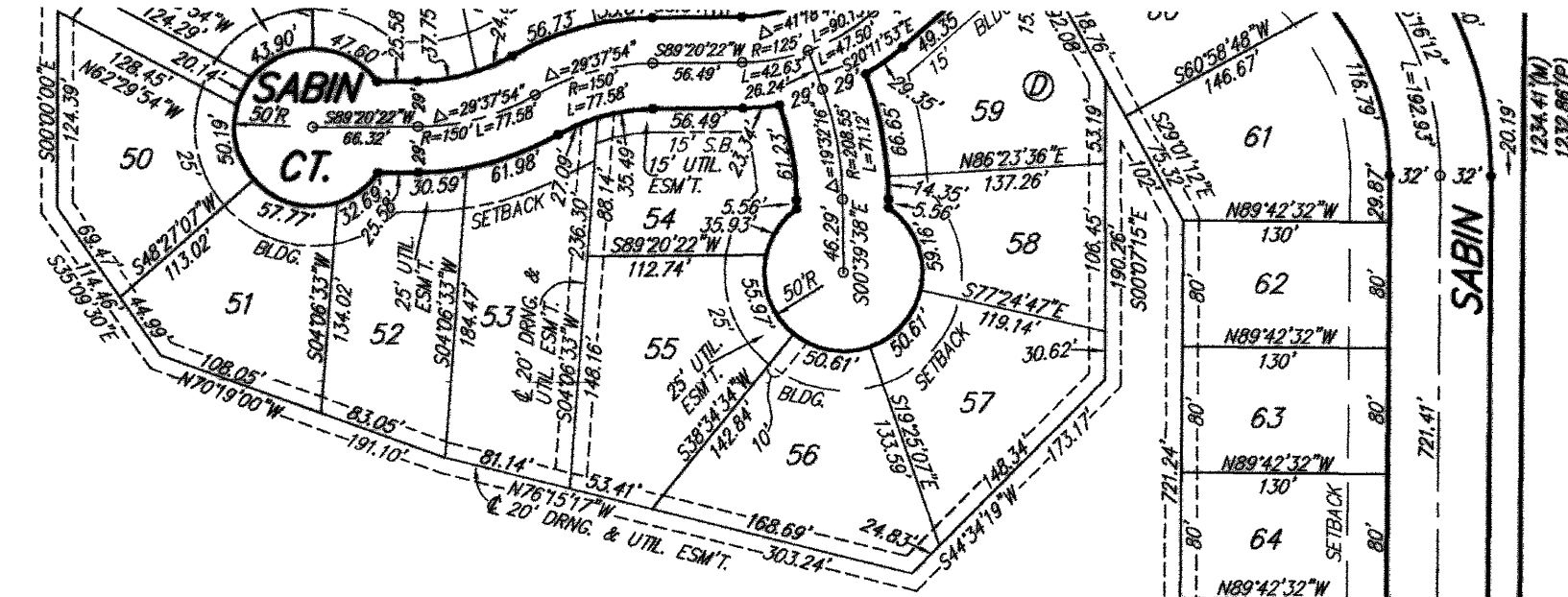
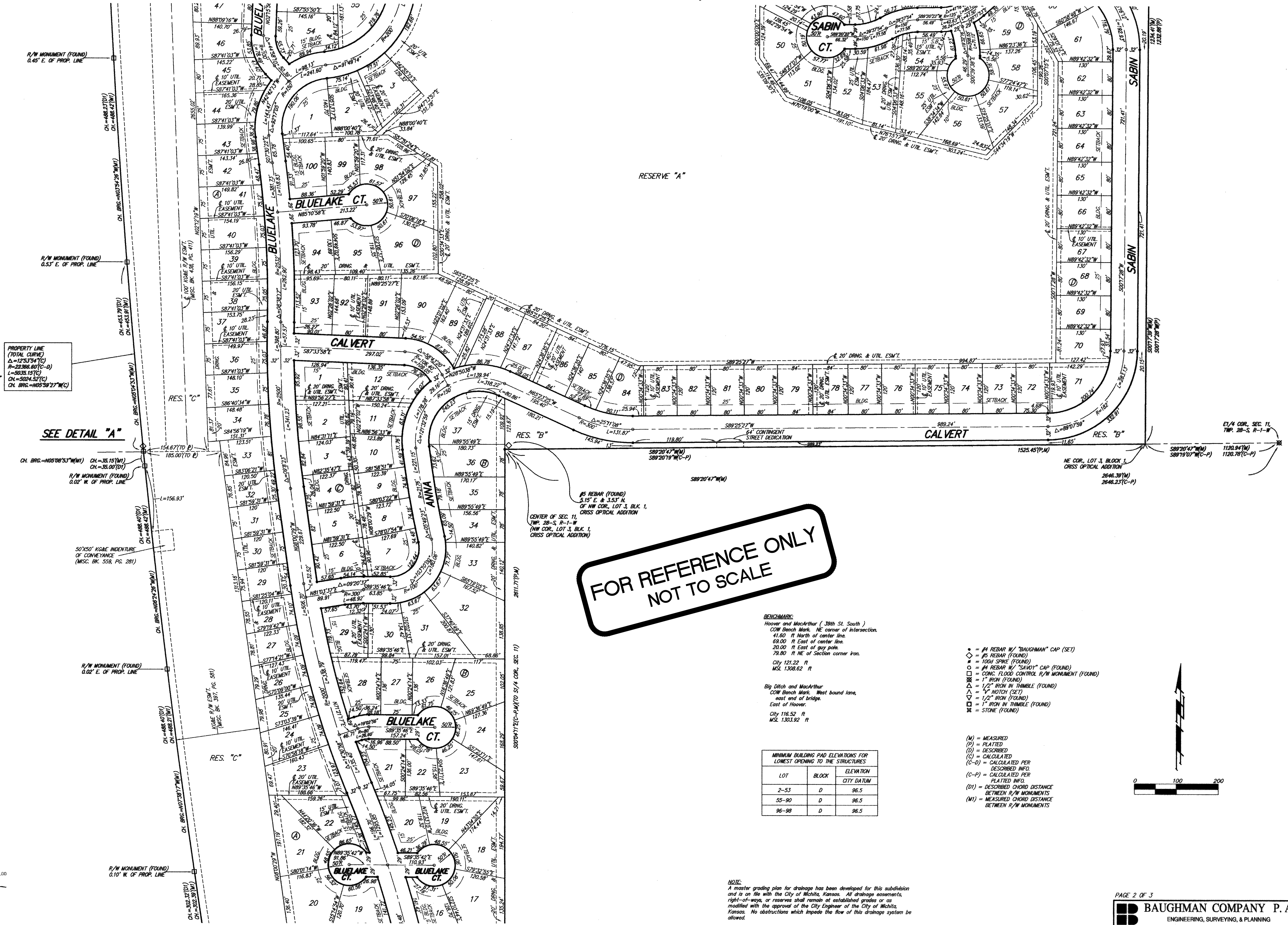


BLUE LAKE ADDITION WICHITA, SEDGWICK COUNTY, KANSAS



WICHITA-VALLEY CENTER FLOODWAY
(D.C.C. NO. A-30410)



FOR REFERENCE ONLY
NOT TO SCALE

DETAIL "A"
(NO SCALE)

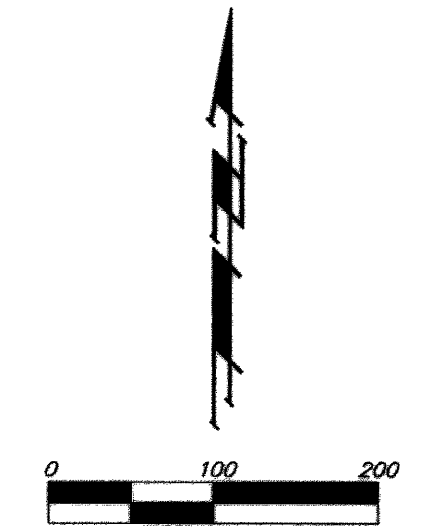
SEE DETAIL "A"

BENCHMARK:
Hoover and MacArthur (.39th St., South)
COW Bench Mark, NE corner of intersection.
41.80' ft North of center line.
92.00' ft East of center line.
20.00' ft East of guy pole.
79.80' ft NE of Section corner iron.
City 121.22' ft
MSL 1308.62' ft

Big Ditch and MacArthur
COW Bench Mark, West bound line,
east end of bridge.
East of Hoover.
City 116.22' ft
MSL 1303.92' ft

LOT	BLOCK	ELEVATION CITY DATUM
2-53	D	96.5
55-90	D	96.5
95-98	D	96.5

- #4 REBAR W/ "BAUGHMAN" CAP (SET)
 - ◊ #5 REBAR (FOUND)
 - 100# SPIKE (FOUND)
 - #4 REBAR W/ "SAVET" CAP (FOUND)
 - CONC. FLOOD CONTROL R/W MONUMENT (FOUND)
 - ⊗ 1" IRON (FOUND)
 - △ 1/2" IRON IN TRIMBLE (FOUND)
 - ▽ 1/2" IRON (FOUND)
 - ◻ 1" IRON IN TRIMBLE (FOUND)
 - ⊠ STONE (FOUND)
- (M) = MEASURED
(F) = FLATTED
(D) = DESCRIBED
(C) = CALCULATED
(C-D) = CALCULATED PER DESCRIBED INFO
(C-P) = CALCULATED PER PLATTED INFO
(DI) = DESCRIBED CHORD DISTANCE BETWEEN R/W MONUMENTS
(MI) = MEASURED CHORD DISTANCE BETWEEN R/W MONUMENTS



Sedgwick County
Register of Deeds - See next
DOC.#/FLM-PG: 28611551
Recap.#: 1565474
Pages Recorded: 3
Casher Initials: DM
Authorized By: [Signature]
Date Recorded: 9/28/2004 3:50:56 PM

NOTE:
A master grading plan for drainage has been developed for this subdivision and is on file with the City of Wichita, Kansas. All drainage easements, right-of-ways, or reserves shall remain at established grades or as modified with the approval of the City Engineer of the City of Wichita, Kansas. No obstructions which impede the flow of this drainage system be allowed.

PAGE 2 OF 3
BAUGHMAN COMPANY P. A.
ENGINEERING, SURVEYING, & PLANNING
316-282-7271 • 315 ELLIS • WICHITA, KANSAS 67211

Baughman Company, P.A.
145 E. WILSON, SUITE 201, WICHITA, KANSAS 67202
ENGINEERING, SURVEYING, & PLANNING
Wichita, Kansas
Date: 9/27/04

BLUE LAKE ADDITION PH. 2A
COPY OF PLAT
WATER DISTRIBUTION SYSTEM

SHEET
OF
14
14