

BENCHMARKS:

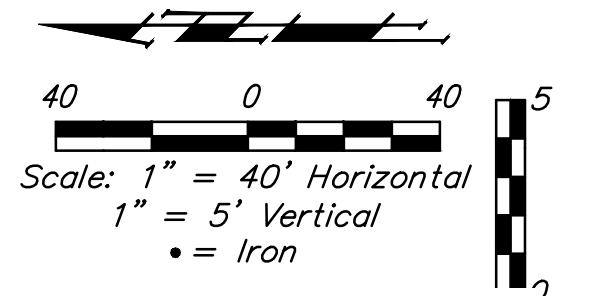
BM #1: "□" on top of SW curb of bulb of Sabin Ct., SE corner of Lot 40, Block D, Blue Lake Addition
Elev. = 102.10 (City Datum)

BM #2: "□" on top of east curb of bulb of Sabin Ct., SW corner of Lot 58, Block D, Blue Lake Addition
Elev. = 105.61 (City Datum)

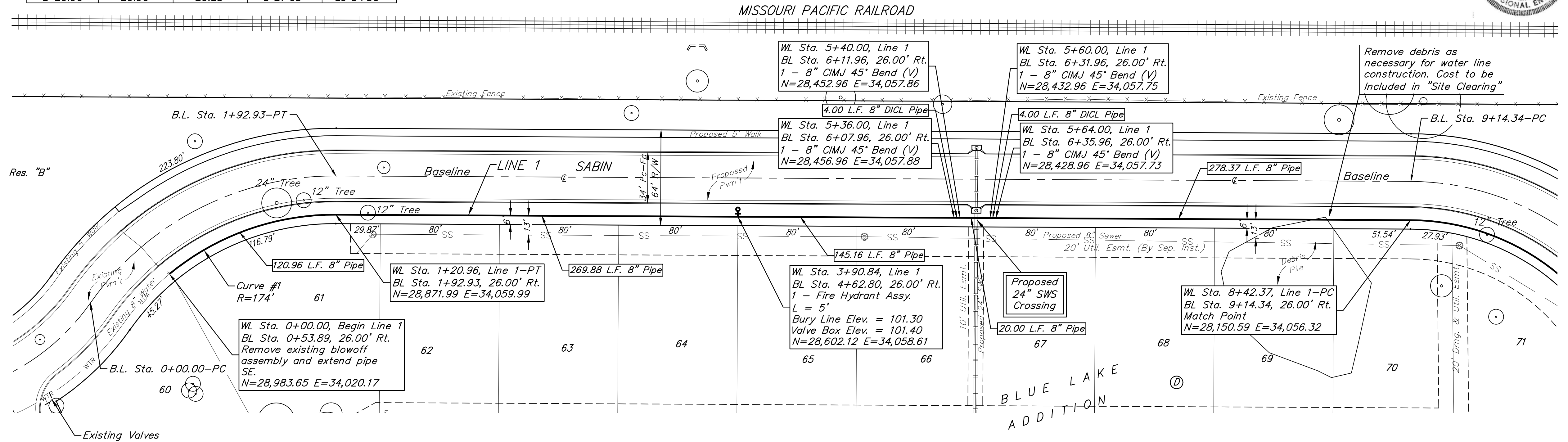
BM #3: "□" on top of south curb of bulb of Sabin Ct., NW corner of Lot 51, Block D, Blue Lake Addition
Elev. = 102.30 (City Datum)

Curve #1				
Curve Data Based on Waterline				
Rad. = 174' Delta = 39°49'53" Tangent = 63.04'				
Arc = 120.96' L.C. = 118.54' Def./Ft. = 9.87882 Min.				
Station	Arc	Chord Lengths	Defl.	Total Defl.
0+00.00	-	-	0°00'00"	0°00'00"
0+25.00	25.00'	24.12'	4°06'58"	4°06'58"
0+50.00	25.00'	24.12'	4°06'58"	8°13'56"
0+75.00	25.00'	24.12'	4°06'59"	12°20'55"
1+00.00	25.00'	24.12'	4°06'58"	16°27'53"
1+20.96	20.96'	20.23'	3°27'03"	19°54'56"

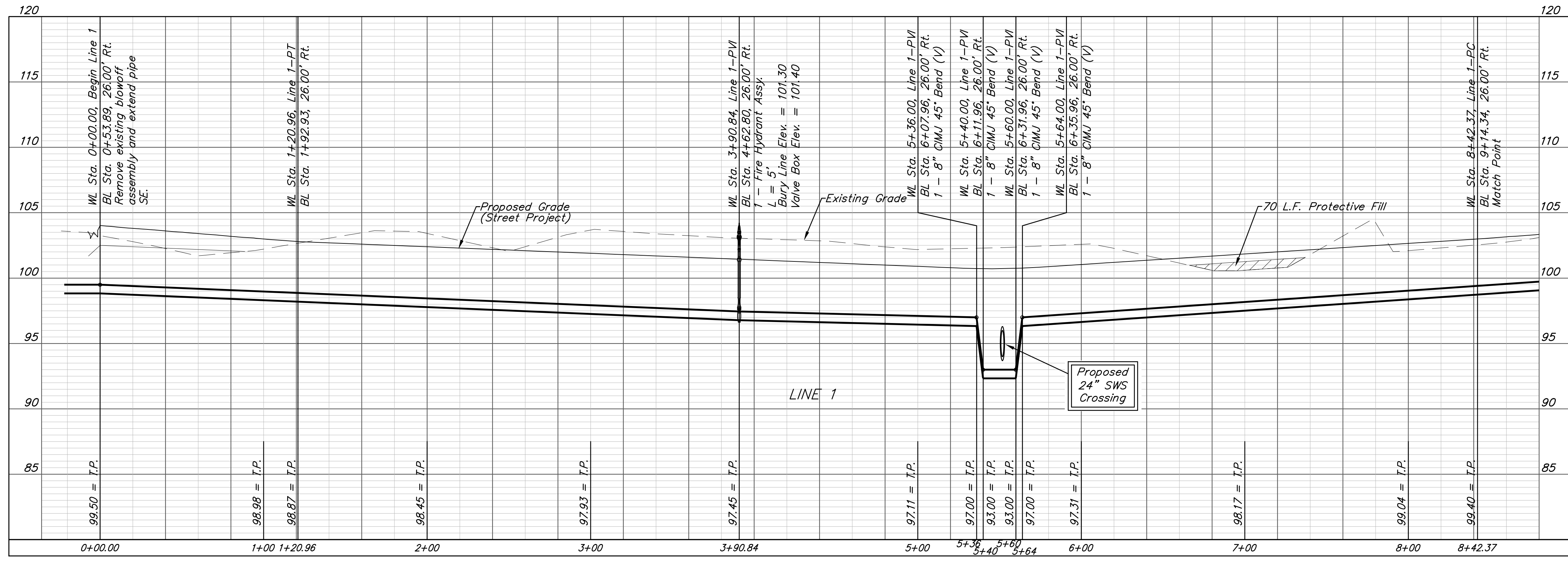
BL = CL Sabin



For radii under 300', contractor shall use short pipe lengths.



DEPTH UNKNOWN
Contractor to Verify
Depth & Location of
Existing Water Line
Prior to Construction.



BAUGHMAN
Baughman Company, P.A.
11415 W. 48th St., Suite 100, Overland Park, KS 66204
ENGINEERING, SURVEYING, PLANNING, LANDSCAPE ARCHITECTURE
Drew: DMV Approval: TMS Date: 05/19
Site: Walnut

BLUE LAKE ADDITION PH. 2A
LINE 1
WATER DISTRIBUTION SYSTEM