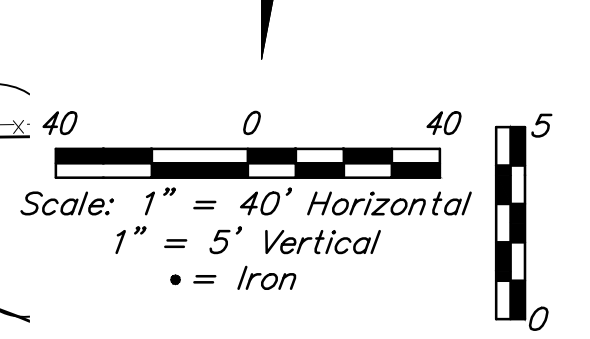
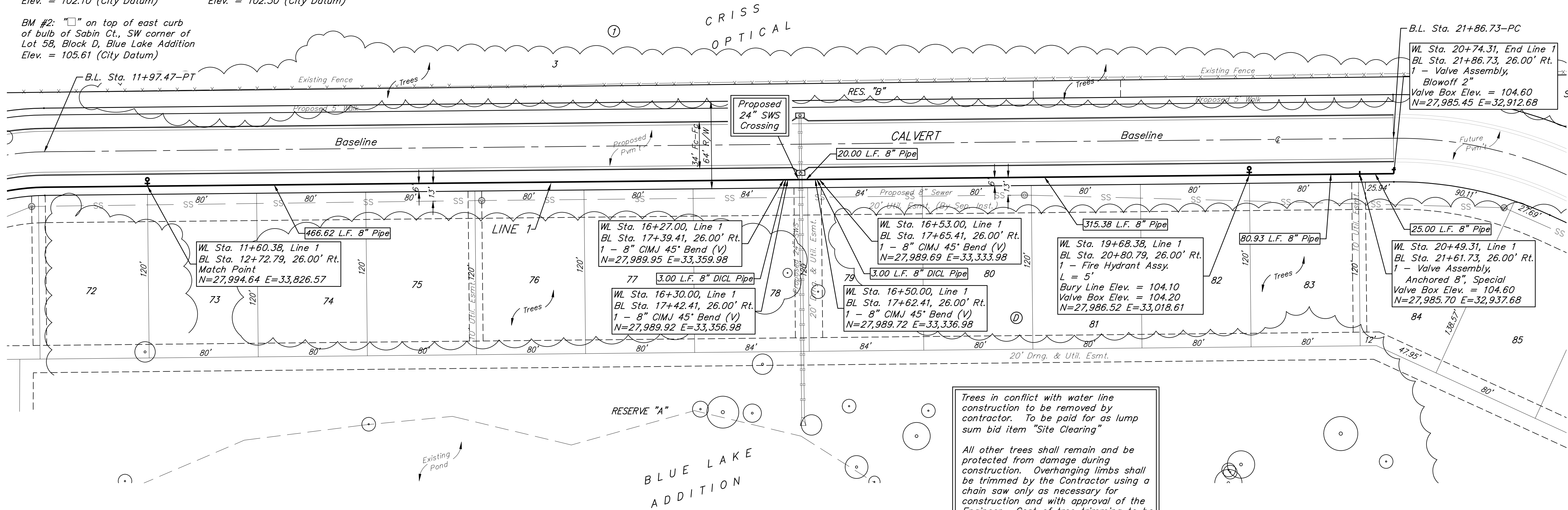


BENCHMARKS:

BM #1: "□" on top of SW curb of Bolin Drive, SE corner of Lot 40, Block D, Blue Lake Addition
Elev. = 102.10 (City Datum)

BM #3: "□" on top of south curb of bulb of Sabin Ct., NW corner of Lot 51, Block D, Blue Lake Addition
Elev. = 102.30 (City Datum)

BM #2: "□" on top of east curb of bulb of Sabin Ct., SW corner of Lot 58, Block D, Blue Lake Addition
Elev. = 105.61 (City Datum)



Trees in conflict with water line construction to be removed by contractor. To be paid for as lump sum bid item "Site Clearing"

All other trees shall remain and be protected from damage during construction. Overhanging limbs shall be trimmed by the Contractor using a chain saw only as necessary for construction and with approval of the Engineer. Cost of tree trimming to be included in bid item "Site Clearing"

