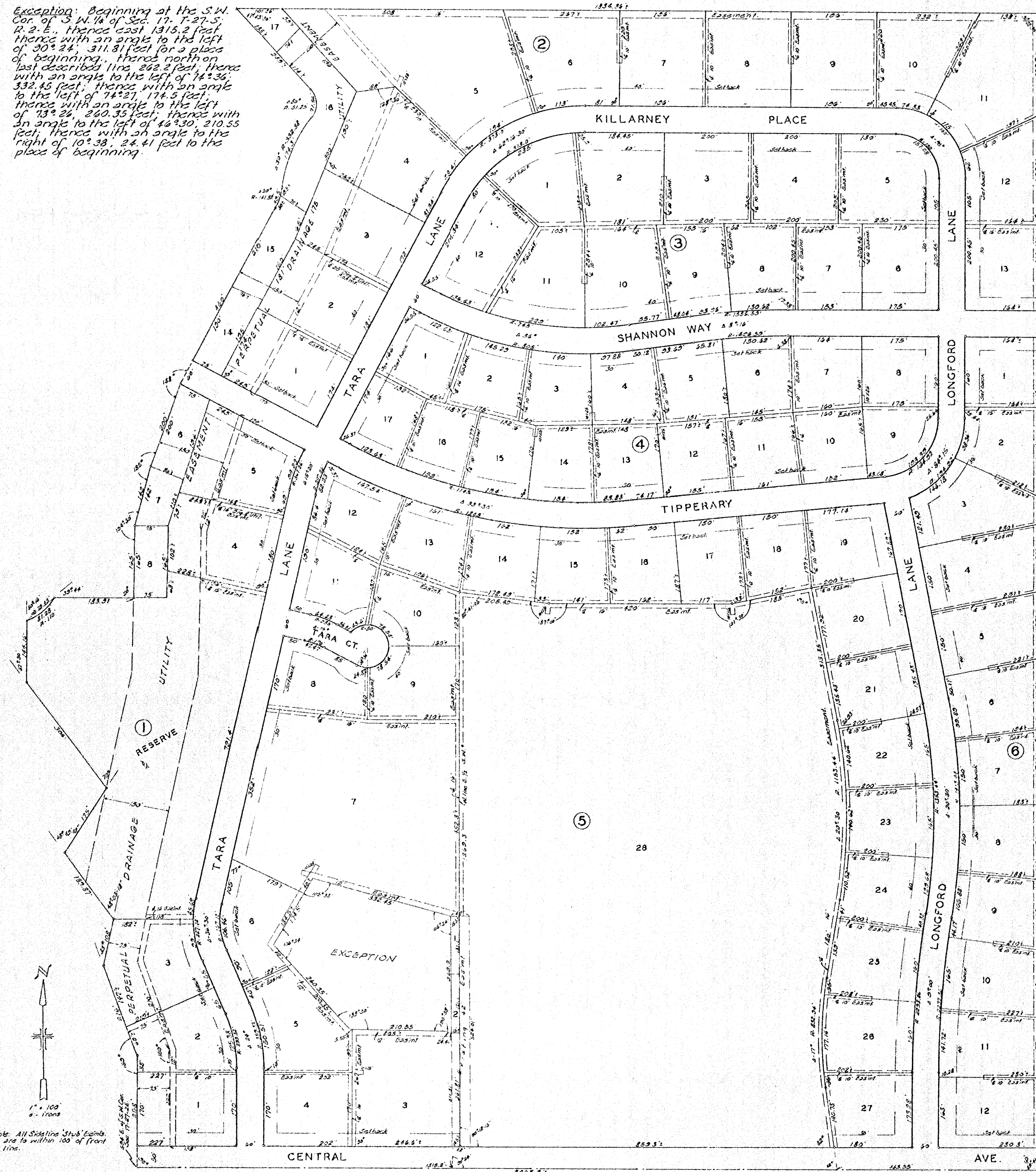


SECOND ADDITION
TO
VICKRIDGE
SEDGWICK COUNTY KANSAS

Exception: Beginning at the S.W. Cor. of 1/4 of Sec. 17, T.27.S., R.2.E., thence east 1315.2 feet thence with an angle to the left of 30° 24' 311.81 feet to a place of beginning, thence north on last described line 222.2 feet, thence with an angle to the left of 14° 36' 332.45 feet, thence with an angle to the left of 74° 52' 174.5 feet, thence with an angle to the left of 13° 26' 240.35 feet, thence with an angle to the left of 46° 30' 210.55 feet, thence with an angle to the right of 10° 38' 24.41 feet to the place of beginning.



State of Kansas } s.s. I, Clyde M. Baughman, Surveyor,
Sedgwick County, Kansas, do hereby certify that the above described plat is a true and correct exhibit of the property surveyed and described as follows: All of the S.W. 1/4 of Sec. 17, Twp. 27.S., R.2.E., lying east of the following described line:
Beginning 524 feet east of the S.W. Cor. of said 1/4 Sec., thence north at right angles 232 feet, thence left 21° 00' a distance of 166.0 feet, thence right 33° 00' a distance of 108.0 feet, thence left 48° 03' 18" a distance of 180.81 feet, thence right 68° 49' 48" a distance of 175.0 feet, thence left 70° 30' a distance of 306.0 feet, thence right 37° 30' 144.16 feet, thence along a curve having a radius of 110 feet, a distance of 81.28 feet, described by the following deflection angle and chord, right 50° 18' 20.43 feet, thence right 35° 14' 123.51 feet, thence left 38° 00' 185.0 feet, thence right 14° 30' 142.0 feet, thence right 5° 00' 200.0 feet, thence right 8° 00' 450.0 feet to the P.C. of a curve to the left having a central angle of 20° 00' and a radius of 141.82 feet, thence along said curve 42.5 feet to the P.R.C. of a curve to the right having a central angle of 30° 00' and a radius of 332.83 feet, thence along said curve 174.3 feet to the P.R.C. of a curve to the left having a central angle of 30° 00' and a radius of 51.55 feet, thence along said curve 71.5 feet, thence on tangent to said curve 243 feet more or less to the north line of said 1/4 Sec. 17, except the following described tract (See exception)

Clyde M. Baughman, Surveyor

Know all men by these presents that we John S. Wertz, George Stallwitz, Helen Vickers Springer, Kenneth Hill and J.A. Vickers, trustees of The Vickers Testamentary Trusts, and of the Helen Vickers Trusts, and Mark K. Canalis, President and Ignatius J. Streater, Secy. Treas. of the Catholic Diocese of Wichita, a corporation, and Helen Vickers Springer and Sam Springer,

have caused the land described in the surveyors certificate to be platted into lots, blocks, streets, roads, lanes and a reserve to be known as "SECOND ADDITION TO VICKRIDGE" Sedgwick County, Kansas. Easements are hereby granted as indicated for the construction and maintenance of all public utilities and drainage where indicated. The streets, roads, lanes and courts are hereby dedicated to and for the use of the public.

The Vickers Testamentary Trusts
The Helen Vickers Trusts
Helen Vickers Springer, Trustee
John S. Wertz, Trustee
George Stallwitz, Trustee
Kenneth E. Hill, Trustee
Catholic Diocese of Wichita, a corporation,
Mark K. Canalis, President
Ignatius J. Streater, Secy. Treas.
Helen Vickers Springer
Sam Springer

State of Kansas } s.s. Be it remembered that on this 26th day of February, 1960, before me, a notary public in Sedgwick County, Kansas, John S. Wertz, George Stallwitz, Helen Vickers Springer, Kenneth Hill and J.A. Vickers, trustees of The Vickers Testamentary Trusts, and of The Helen Vickers Trusts, Mark K. Canalis, President and Ignatius J. Streater, Secy. Treas. of the Catholic Diocese of Wichita, a corporation, and Helen Vickers Springer and Sam Springer, known to be the same persons who executed the foregoing instrument of writing and duly acknowledged the execution of the same. In testimony whereof I have hereunto set my hand and affixed my notarial seal the day and year above written.
Fern E. Delt, Notary Public
My Commission Expires May 4, 1960

This plat of "SECOND ADDITION TO VICKRIDGE" Sedgwick County, Kansas, has been submitted to and considered by the Wichita, Sedgwick County Metropolitan Area Planning Commission and is hereby transmitted to the Board of City Commissioners with the recommendation that such plat be approved as proposed. Dated this 18th day of February, 1960.
Wichita-Sedgwick County Metropolitan Area Planning Commission
Secretary

State of Kansas } s.s. This is to certify that this plat was filed for record in the office of the Register of Deeds this 26th day of February, 1960, at 12:00 o'clock P.M. and is duly recorded.
4153
Rufus E. Delt, Register of Deeds
Nancy J. ... Deputy

Approved by the Board of City Commissioners this 26th day of February, 1960.
Justin DeBergale Mayor
C. H. ... City Clerk

Approved by the Board of County Commissioners this 26th day of February, 1960.
H. O. Williams County Clerk

Entered on transfer record this 26th day of February, 1960.
H. O. Williams County Clerk