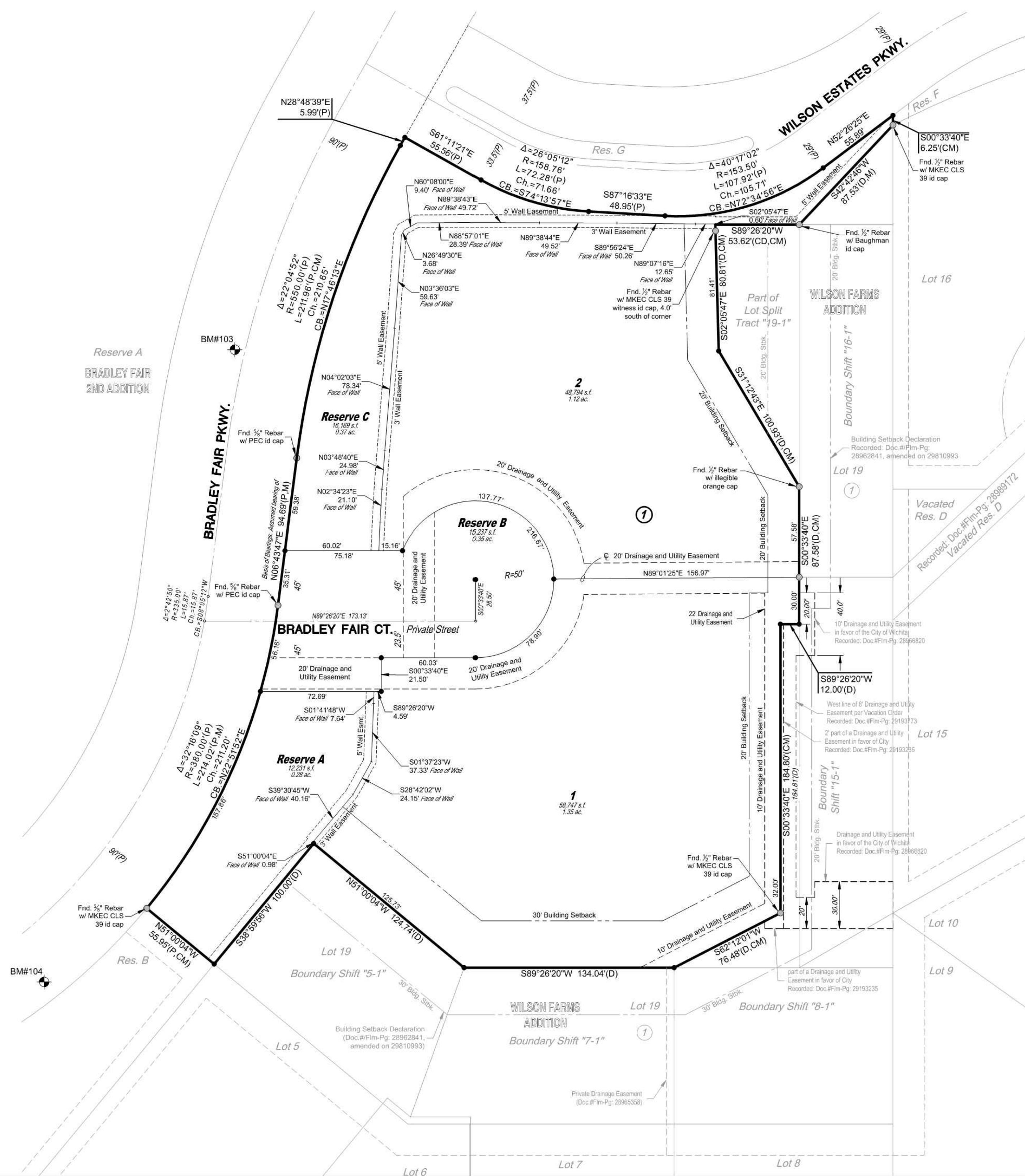
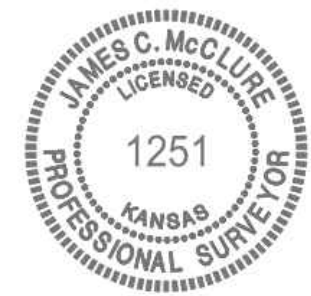
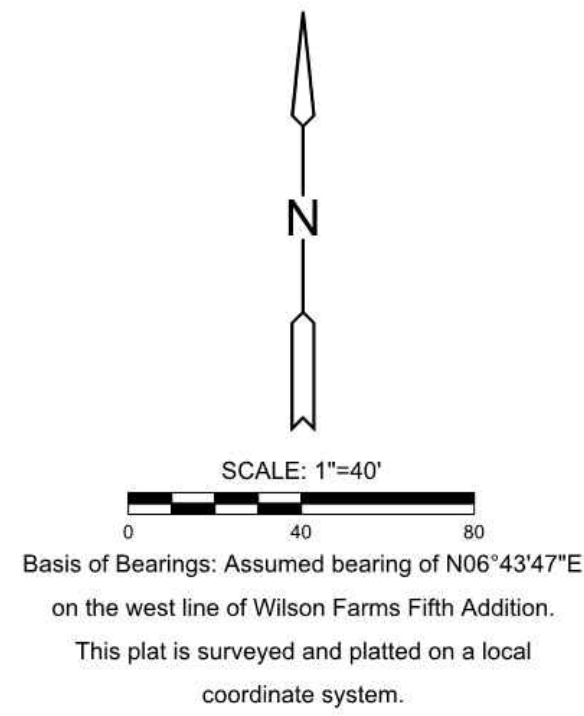


# FINAL PLAT WILSON FARMS FIFTH ADDITION AN ADDITION TO WICHITA, SEDGWICK COUNTY, KANSAS



### LEGEND

- Date of Survey: July 2019
- △ = Section Corner Monument Found
  - = Found monument (see annotation for type)
  - = Set 1/2" rebar w/ MKEC CLS 39 id. cap
  - ⊕ = Benchmark
  - (M) = Measured
  - (P) = Platted
  - (D) = Described
  - (CM) = Calculated from Measured
  - (CD) = Calculated from Described
  - ① = Lot
  - ② = Block

### BENCHMARKS

- BM#103 Chiseled square on south end of median island in Bradley Fair Parkway, 200' +/- south of Wilson Estates Parkway. Elev.=1392.31 NAVD88
- BM#104 Chiseled square on southeast corner of curb inlet on east side of Bradley Fair Parkway, 625' +/- south of Wilson Estates Parkway. Elev.=1391.04 NAVD88

