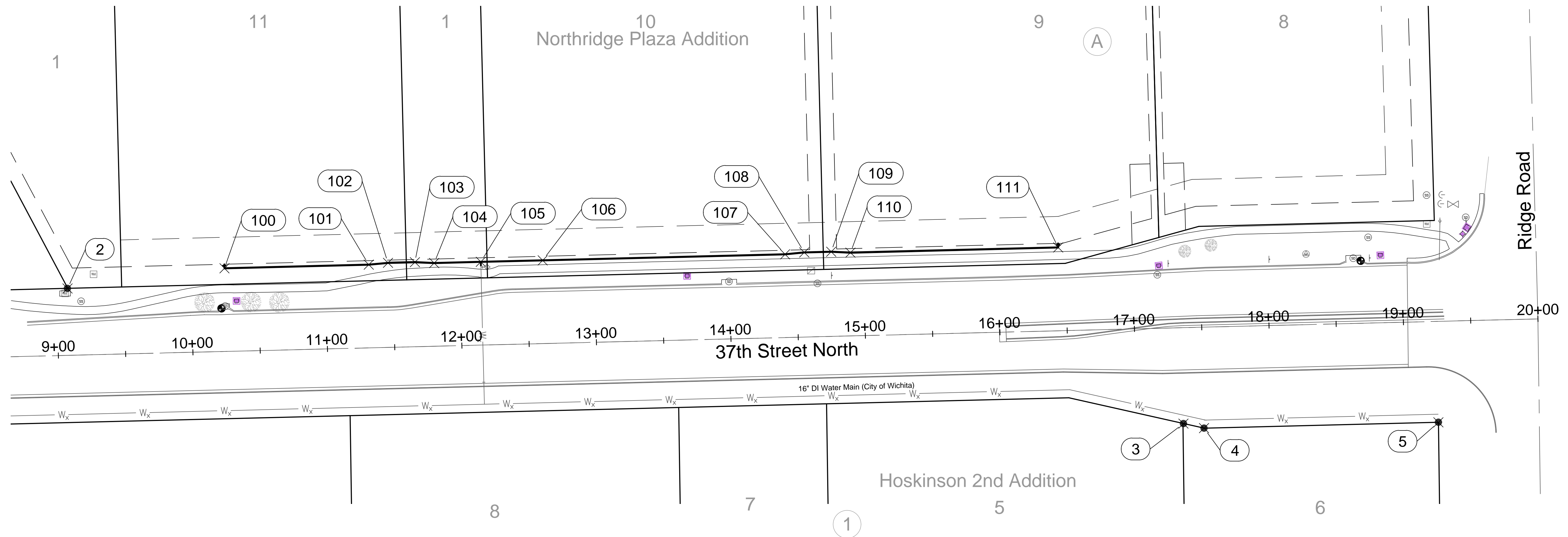
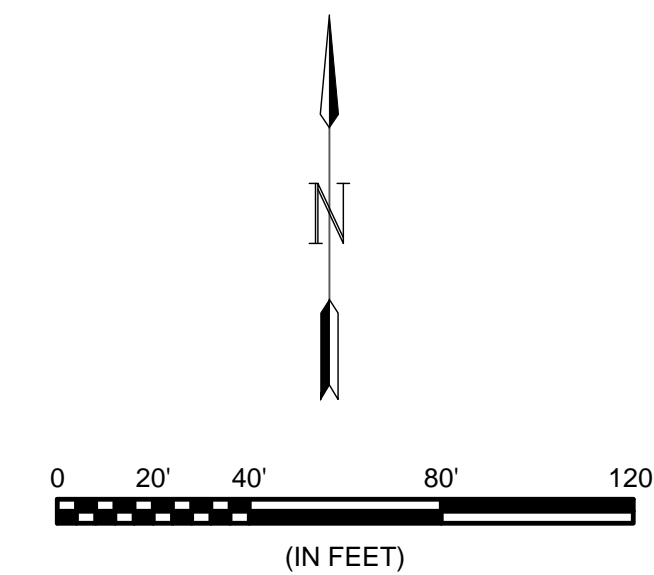


File: L:\2019\19T41007 - 37th and Ridge Water Main Drawings\C3D\19T41007 Base.dwg Last Save: 5/6/2019 10:35 AM Last saved by: KWLee
 Last plotted by: Lee, Ken W. Plot Style: --- Plot Scale: 1:2,584.9 Plot Date: 5/8/2019 11:27 AM Plotter used: None



Point Table			
Point #	Northing	Easting	Description
1	1709513.66	1620281.70	3/4 Thimble
2	1709603.15	1621860.28	1/2 Baughman
3	1709502.69	1622689.70	1/2 Baughman
4	1709499.34	1622705.01	1/2 Baughman
5	1709503.66	1622879.23	1/2 Baughman
100	1709618.12	1621976.94	0+00 BO ASSEMBLY
101	1709620.80	1622084.20	1+07.29 DEFLECTION
102	1709622.16	1622098.47	1+21.62 DEFLECTION
103	1709622.66	1622118.47	1+41.63 DEFLECTION
104	1709622.02	1622132.79	1+55.96 DEFLECTION
105	1709622.89	1622167.46	1+90.64 MJ TEE
106	1709624.04	1622213.43	2+36.63 PVI
107	1709628.55	1622393.64	4+16.89 DEFLECTION
108	1709629.91	1622407.91	4+31.23 DEFLECTION
109	1709630.41	1622427.90	4+51.23 DEFLECTION
110	1709629.76	1622442.23	4+65.57 DEFLECTION
111	1709633.63	1622596.61	6+20 BO ASSEMBLY



- NOTES:**
- Point #1 is the 1/4 Corner west of the site.
 - All coordinates indicated in this drawing are modified Kansas Zone South state plane coordinates.



© 2019 GARVER, LLC
 THIS DOCUMENT, ALONG WITH THE IDEAS AND DESIGNS CONVEYED HEREIN, SHALL BE CONSIDERED INSTRUMENTS OF PROFESSIONAL SERVICE AND ARE PROPERTY OF GARVER, LLC. ANY USE, REPRODUCTION, OR DISTRIBUTION OF THIS DOCUMENT, ALONG WITH THE IDEAS AND DESIGN CONTAINED HEREIN, IS PROHIBITED UNLESS AUTHORIZED IN WRITING BY GARVER, LLC OR EXPLICITLY ALLOWED IN THE GOVERNING PROFESSIONAL SERVICES AGREEMENT FOR THIS WORK.



REV.	DATE	DESCRIPTION	BY



CITY OF WICHITA
 WICHITA, KANSAS
 Water Main Extension to serve Northridge Plaza Addition

Coordinate Sheet

JOB NO.: 19T41007
 DATE: MAY 2019
 DESIGNED BY: KWL
 DRAWN BY: KWL

BAR IS ONE INCH ON ORIGINAL DRAWING
 IF NOT ONE INCH ON THIS SHEET, ADJUST SCALES ACCORDINGLY.

DRAWING NUMBER

SHEET NUMBER **4 OF 10**