

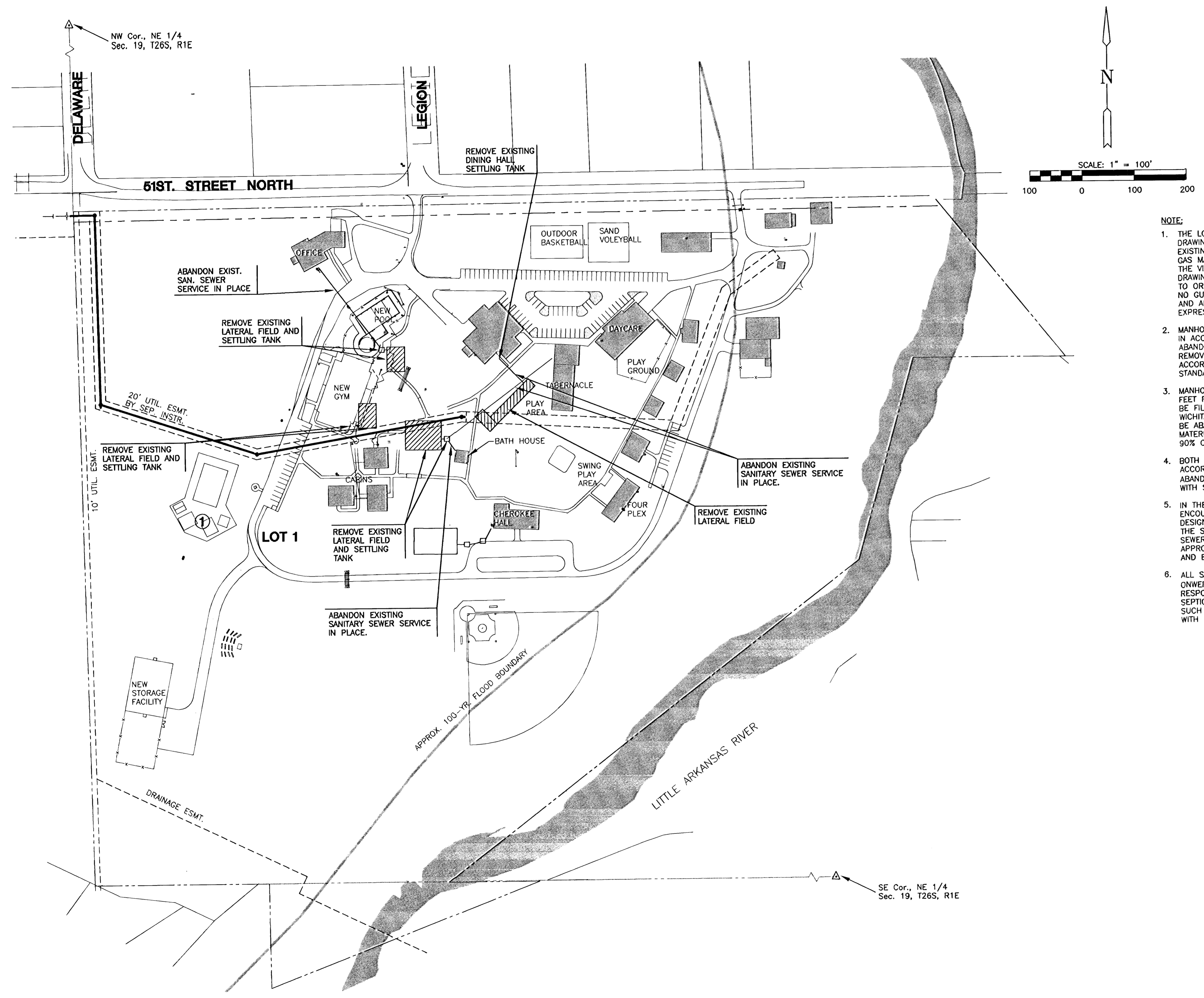
**SANITARY SEWER PLANS FOR  
SALVATION ARMY  
HIAWATHA CAMPUS**

**REMOVAL  
PLAN**  
SHEET TITLE  
PROJECT NUMBER  
**06635**

DESIGN BY  
**SRS**  
DRAWN BY  
**DM**  
CHECKED BY  
**MAB**

ISSUED  
**December 2006**  
REVISED

SHEET NO.  
**3 of 10**



- NOTE:**
1. THE LOCATION OF EXISTING LATERAL FIELDS AND UTILITIES SHOWN ON THE DRAWINGS IS BASED ON INFORMATION PROVIDED IN PART BY OTHERS. THE EXISTING UNDERGROUND INSTALLATIONS SUCH AS LATERAL FIELDS, WATER MAINS, GAS MAINS, SEWERS, TELEPHONE LINES, POWER LINES AND BURIED STRUCTURES IN THE VICINITY OF THE WORK TO BE DONE HEREUNDER ARE INDICATED ON THE DRAWINGS ONLY TO THE EXTENT SUCH INFORMATION HAS BEEN MADE AVAILABLE TO OR DISCOVERED BY THE SURVEYOR IN PREPARING THIS DRAWING. THERE IS NO GUARANTY AS TO THE ACCURACY OR COMPLETENESS OF SUCH INFORMATION, AND ALL RESPONSIBILITY FOR THE ACCURACY AND COMPLETENESS THEREBY IS EXPRESSLY DISCLAIMED.
  2. MANHOLES AND TANKS DESIGNATED FOR REMOVAL SHALL BE COMPLETELY REMOVED IN ACCORDANCE WITH THE CITY OF WICHITA STANDARD SPECIFICATIONS. ALL ABANDONED PIPES WHICH REMAIN AFTER THE MANHOLE OR TANK HAS BEEN REMOVED SHALL BE PLUGGED. THE EXCAVATION SHALL BE BACKFILLED IN ACCORDANCE WITH THE REQUIREMENTS AS SPECIFIED IN THE CITY OF WICHITA STANDARD SPECIFICATIONS FOR SEWER TRENCH BACKFILL.
  3. MANHOLES AND TANKS DESIGNATED TO BE ABANDONED SHALL HAVE THE TOP FOUR FEET REMOVED AND THE REMAINING PORTION OF THE MANHOLE OR TANK SHALL BE FILLED WITH SAND, FLUSHED AND VIBRATED IN ACCORDANCE WITH THE CITY OF WICHITA STANDARD SPECIFICATIONS. ALL PIPES IN THE MANHOLE WHICH ARE TO BE ABANDONED SHALL BE PLUGGED PRIOR TO FILLING THE MANHOLE WITH MATERIAL SIMILAR TO THE ADJACENT SURFACE AND COMPACTED TO A DENSITY OF 90% OF THE STANDARD DENSITY.
  4. BOTH ENDS OF ALL PIPES TO BE ABANDONED IN PLACE SHALL BE PLUGGED IN ACCORDANCE WITH THE CITY OF WICHITA STANDARD SPECIFICATIONS. PIPES ABANDONED IN PLACE HAVING DIAMETERS GREATER THAN 15" SHALL BE FILLED WITH SAND OR GROUT AND PLUGGED.
  5. IN THE EVENT THE LEAD LINE OR THE LATERALS FROM SEPTIC SYSTEMS ARE ENCOUNTERED IN THE CONSTRUCTION OF THE SEWER, AND THE LATERAL FIELD IS DESIGNATED FOR ABANDONMENT OR REMOVAL, THE CONTRACTOR SHALL REMOVE THE SEWER LATERAL PIPING AND RELATED APPURTENANCES IN CONFLICT WITH THE SEWER MAIN CONSTRUCTION AND DISPOSE OF REMOVED MATERIALS IN A LANDFILL APPROVED BY THE CITY OF WICHITA AND THE KANSAS DEPARTMENT OF HEALTH AND ENVIRONMENT.
  6. ALL SANITARY SEWER CONSTRUCTION ACTIVITY SHALL BE COORDINATED WITH OWNER'S REPRESENTATIVE, RON WHITE, AT 641-5535. CONTRACTOR SHALL BE RESPONSIBLE FOR COORDINATING DISCONNECTION OF EXISTING BUILDINGS FROM SEPTIC SYSTEMS AND CONNECTION TO SANITARY SEWER SYSTEM. SOME BUILDINGS, SUCH AS THE OFFICE, ARE IN CONTINUOUS USE AND WORK SHALL BE COORDINATED WITH RON WHITE.

PLOTED: Tuesday, February 27, 2007 @ 02:45PM

J:\CIVIL\06635.DWG SAN\06635BDS.DWG