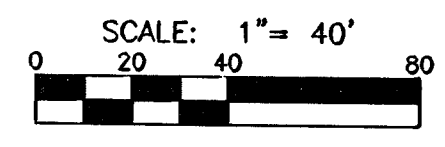
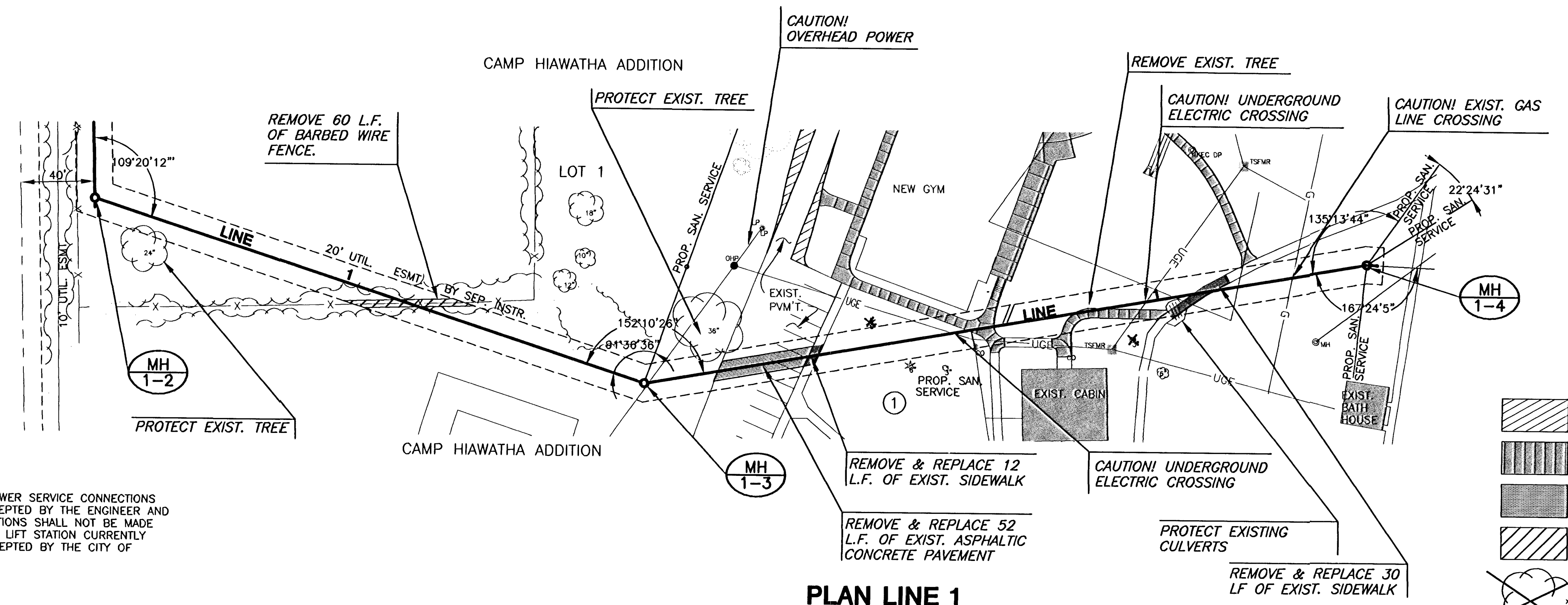


AS-BUILT APRIL 2007

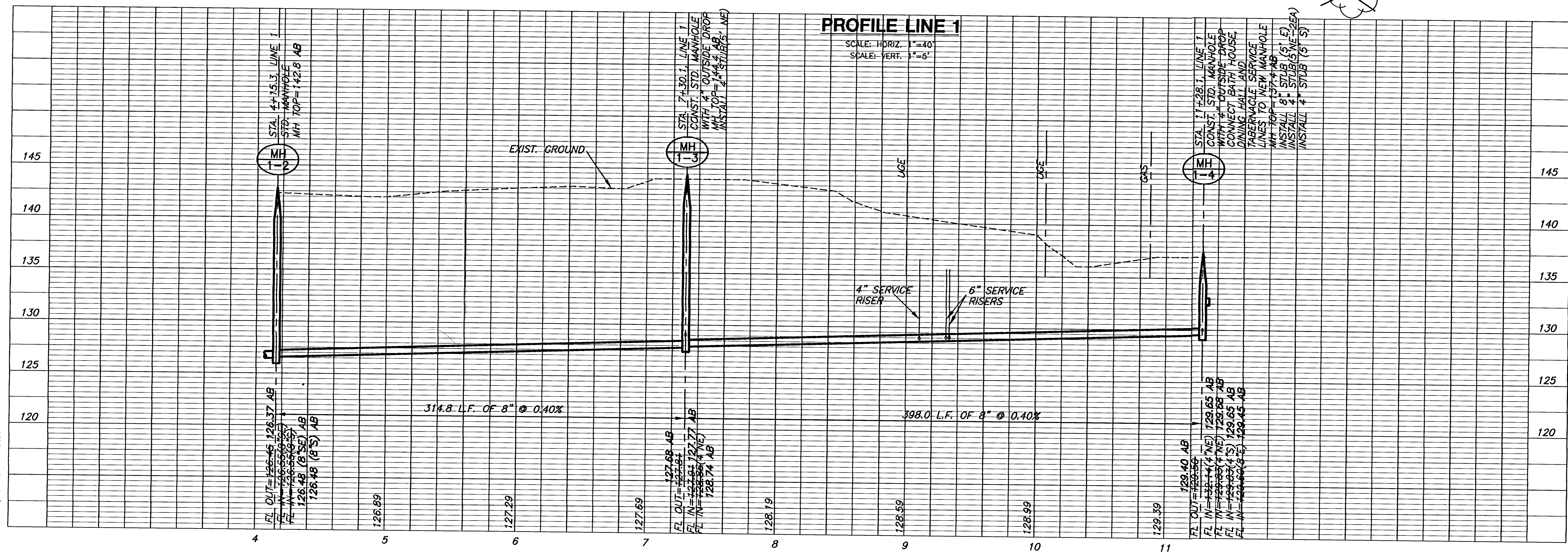
**MKEC**  
ENGINEERING  
CONSULTANTS, INC.  
411 N. WEBB ROAD  
WICHITA, KS. 67206  
316-684-9600



- = FENCE REMOVAL
- = PROPOSED SIDEWALK
- = PAVEMENT REMOVAL
- = TREE TRIMMING
- = TREE REMOVAL

NOTE:  
CONTRACTOR SHALL NOT MAKE ANY SANITARY SEWER SERVICE CONNECTIONS UNTIL SEWER MAINS HAE BEEN TESTED AND ACCEPTED BY THE ENGINEER AND THE CITY OF WICHITA. SEWER SERVICE CONNECTIONS SHALL NOT BE MADE UNTIL THE NORTHWEST INTERCEPTOR SEWER AND LIFT STATION CURRENTLY UNDER CONSTRUCTION ARE COMPLETED AND ACCEPTED BY THE CITY OF WICHITA.

**PLAN LINE 1**



**PROFILE LINE 1**

SCALE: HORIZ. 1"=40'  
SCALE: VERT. 1"=6'

SANTARY SEWER PLANS FOR  
**SALVATION ARMY**  
HIAWATHA CAMPUS

**LINE 1**  
SHEET TITLE  
PROJECT NUMBER  
06635

DESIGN BY  
DRAWN BY  
CHECKED BY  
SRS  
DM  
MAB

ISSUED  
REVISID  
2/28/07 PROFILE RAISE 2'  
REMOVE FLOWABLE FILL  
December 2006

SHEET NO.  
6 of 10

PLOTED: Wednesday, April 04, 2007 @ 09:00AM

J:\DWG\06635\DWG\SAN\AS-BUILT\06635B2.DWG