

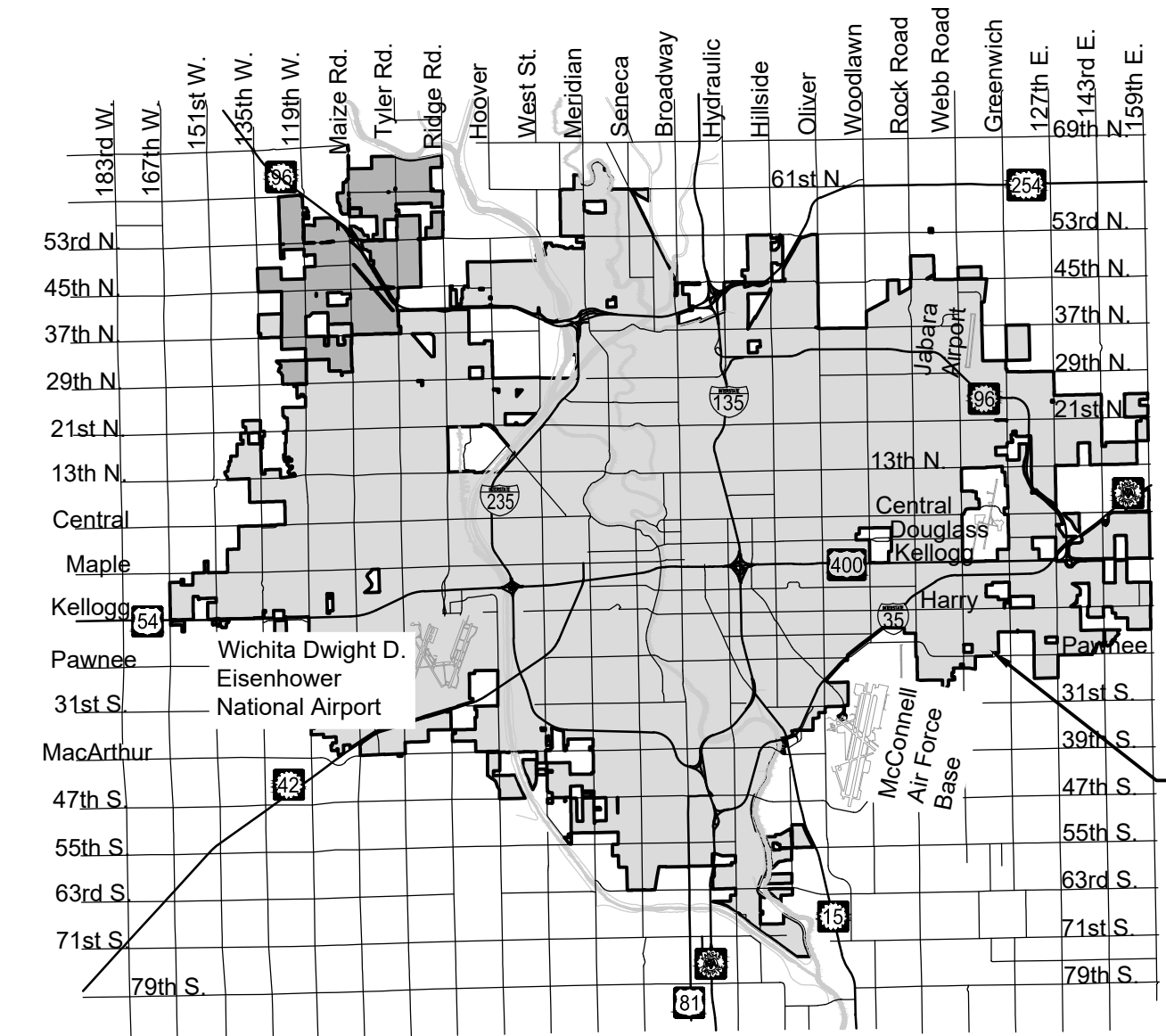
GENERAL NOTES:

- The Contractor shall comply with all applicable safety regulations. All construction shall be completed following current City Standard Specifications and Special Provisions.
- Contractor will be required to provide notice to utility companies a minimum of seventy-two (72) hours prior to any excavation, as follows:
 Kansas One-Call 687-2470
 The Contractor must notify the following in case of an emergency:
 AT&T 1-800-246-8464
 Butler Rural Electric Cooperative 1-316-321-9600
 Black Hills Energy 1-800-694-8989
 City of Wichita Water & Sewer Dept. 1-316-219-8921
 City of Wichita Stormwater 1-316-268-4090
 City of Wichita Traffic 1-316-268-4034
 Cox Communications 1-888-249-3530
 Kansas Gas Service 1-888-482-4950
 Phillips 66 Pipeline 1-800-231-2566
 Southern Star Central Gas Pipeline 1-800-324-9696
 Westar Energy 1-800-544-4857
- Utility service lines, poles, etc. are to be adjusted as necessary by others prior to construction unless the plans specifically call for their adjustment by the Contractor or unless the plans specifically identify a utility to be adjusted by its owner during construction. Existing utilities and their location, as shown on the plans, represent the best information obtainable for design. The Contractor will be required to work around existing utilities within the right-of-way which do not conflict with proposed construction.
- Rubble from the removal of miscellaneous structures and excess excavation which is to be wasted shall be disposed of on sites to be provided by the Contractor. These sites shall be approved by the Engineer as to suitability, appearance and site location. Locations, in the opinion of the Engineer, that will leave an unsightly appearance will not be approved. All disposal sites must be approved by the Kansas Department of Health and Environment. Material either stockpiled or disposed of in a flood plain will require a Kansas State Board of Agriculture permit. Any material dumped in waters of the United States or wetlands is subject to U.S. Corps. of Engineers permitting regulations. Any material buried or stockpiled beyond approved construction limits will require additional archaeological investigations unless buried in a previously approved borrow location.
- Trees and shrubs in public right-of-way which are in direct conflict with proposed new construction shall be removed by the Contractor with the Engineer's approval. Trees and shrubs which are not in direct conflict with proposed new construction shall be saved and protected from damage.
- The Contractor shall give all property owners and/or tenants of developed property abutting the construction of this project a minimum of ten (10) days notice prior to start of construction.
- The Contractor shall be responsible for preserving property irons. The Contractor will be required to re-establish any property irons which are damaged or destroyed by his construction operations. Such irons shall be re-established by a licensed land surveyor in accordance with state laws.
- If traffic will be impacted by construction, a traffic control plan must be submitted and approved by the City Traffic Engineer at traffic@wichita.gov before construction can begin. The Contractor shall be responsible for all traffic control measures to facilitate construction. All construction zone markings and signage shall conform to the latest version of the Manual on Uniform Traffic Control Devices (MUTCD) as published by the US Dept. of Transportation, Federal Highway Administration. All costs associated with construction markings and signage shall be the Contractors responsibly.
- All elevations shown are NAVD88.
- All areas disturbed during construction that will not be under proposed pavement shall be restored to match existing conditions.
- The Contractor shall protect from damage and support existing utilities through constructions as approved by the utility owner and the Engineer at the contractors expense.
- Contractor shall limit the extent of trench openings overnight and weekends to less than 50 feet.
- Any sidewalk, drive approach, curb, or street pavement removed to construct project must have a pavement cut permit and be replaced by the City contractor. Permits can be obtained by calling 316-268-4501 or 316-268-4480.
- No shrink or swell factors have been applied to the earthwork quantities shown on this project. All earthwork quantities are based on raw surface volume comparisons.

- Excess dirt generated from installation of underground utilities is to remain on site and be stockpiled around the Chateau Court Right-of-Way and Block 7, Lots 1-4. See Sheet 2 for more specific definition.
- The Geotechnical Report for the Detention Pond Area has been provided to the City of Wichita and is Available to Bidders.

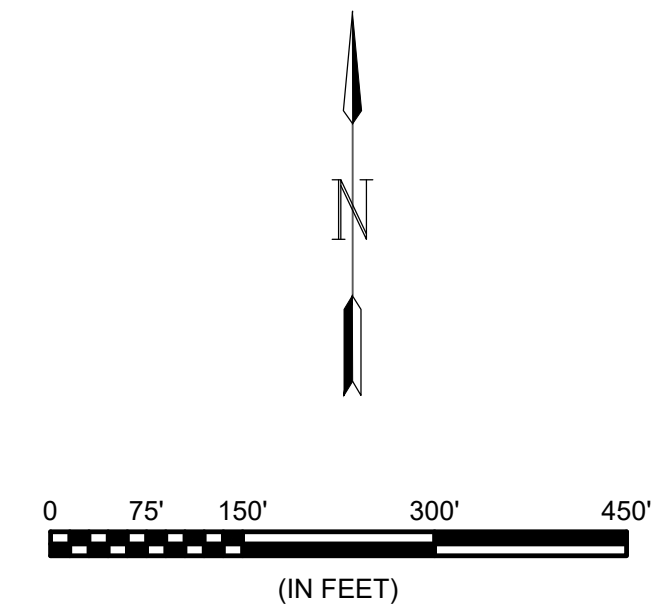
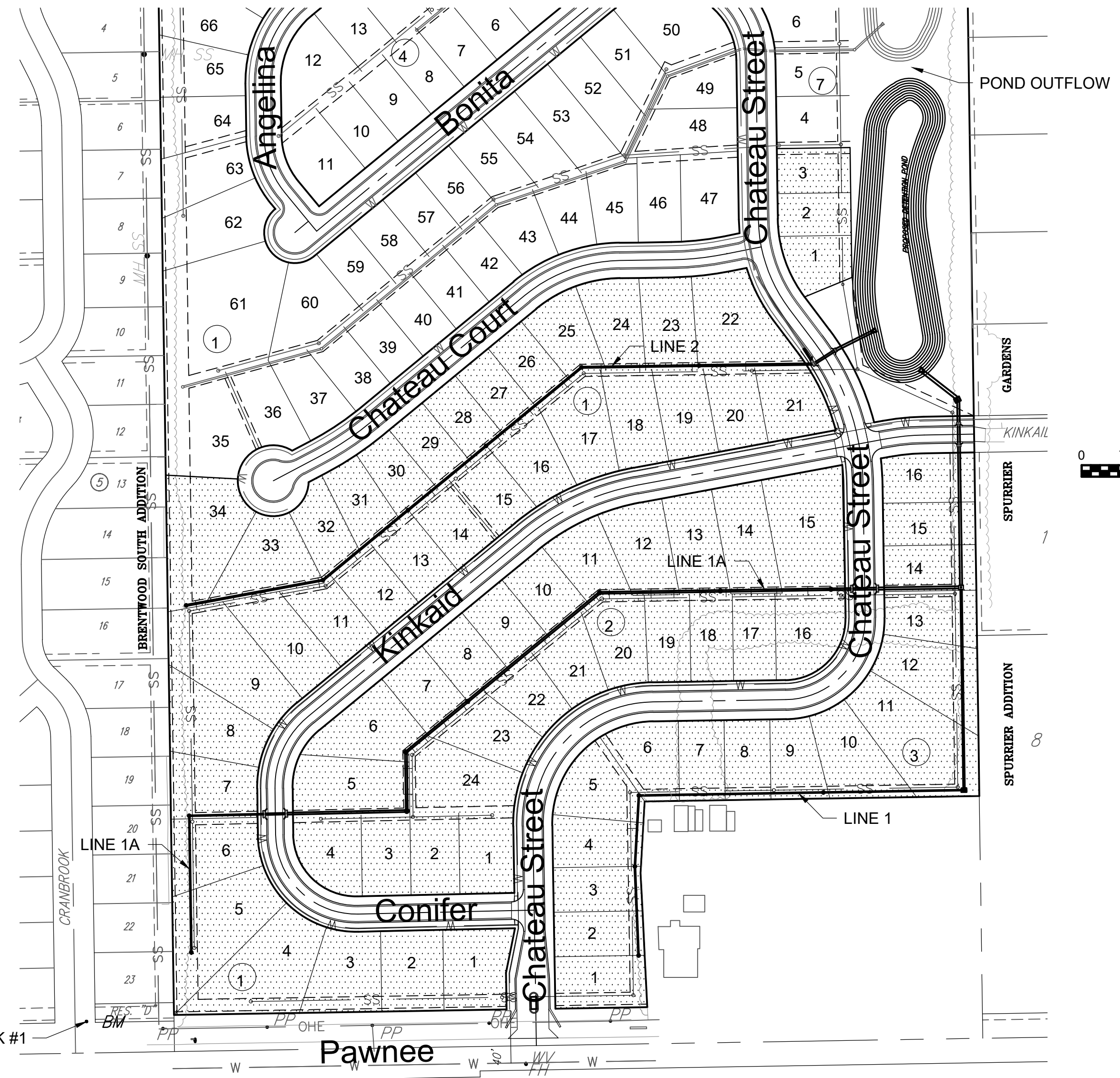
STORM WATER DRAIN #445 to serve Cedar Creek Addition, Phase 1 CITY OF WICHITA, KANSAS

Gary Janzen, P.E. City Engineer
 Project Number 468-85376
 O.C.A. NO. 751590



PROJECT LOCATION

Vicinity Map



Benchmarks

- BENCHMARK #1:**
 CHISELED SQUARE ON THE TOP OF CURB ON THE EAST SIDE OF CRANBROOK, 52 FEET NORTH OF THE CENTERLINE OF PAWNEE.
 ELEVATION = 1387.80 (NAVD88)
- BENCHMARK #2:**
 CHISELED SQUARE ON THE TOP OF CURB AT THE SOUTHEAST CORNER OF CRANBROOK AND BELAIRE.
 ELEVATION = 1374.75 (NAVD88)
- BENCHMARK #3:**
 CHISELED SQUARE ON THE TOP OF CURB ON THE EAST SIDE OF CHATEAU, NORTH CURB RETURN OF THE HAMMER HEAD TURNAROUND.
 ELEVATION = 1361.56 (NAVD88)

IMPROVEMENT DISTRICT

Earthwork Estimate (For Information Only)	
Cut	41,300
Fill	18,400
Net (Cut)	22,900

Sheet Index	
Sheet	Title
1	Titlesheet
2	Project Limits
3	Demolition Plan
3A	Demolition Figures
4	Storm Sewer 1
5	Storm Sewer 1
6	Storm Sewer 1
7	Storm Sewer 1
8	Storm Sewer 1A
9	Storm Sewer 1A
10	Storm Sewer 1A
11	Storm Sewer 1A
12	Storm Sewer 2
13	Storm Sewer 2
14	Storm Sewer 2
15	RC Manhole Detail
15A	MH Frame & Cover
16	Backyard Inlet Detail
17	Type 1A Curb Inlet Detail
17A	Inlet Underdrain Detail
18	Main Site Grading
19	Main Site Grading
20	Typical Sections
21	Typical Sections
22	Easement Grading
23	Easement Grading
24	Easement Grading
25	Easement Grading
26	Pawnee Easement Detailed Grading
27	Pond Grading
28	Pond Outflow Grading
29	Pond Details
30	Four-Corner Grading
31	Coordinate Map
32A	Point Tables
32B	Point Tables
32C	Point Tables
33	Erosion Control Plan
34	Back of Curb Detail
35	Silt Fence Detail
36	Straw Bale Detail
37	Street Improvement Projects
38	Subdivision Development Process
39	Final Plat



May 2019

PLANS PREPARED BY

