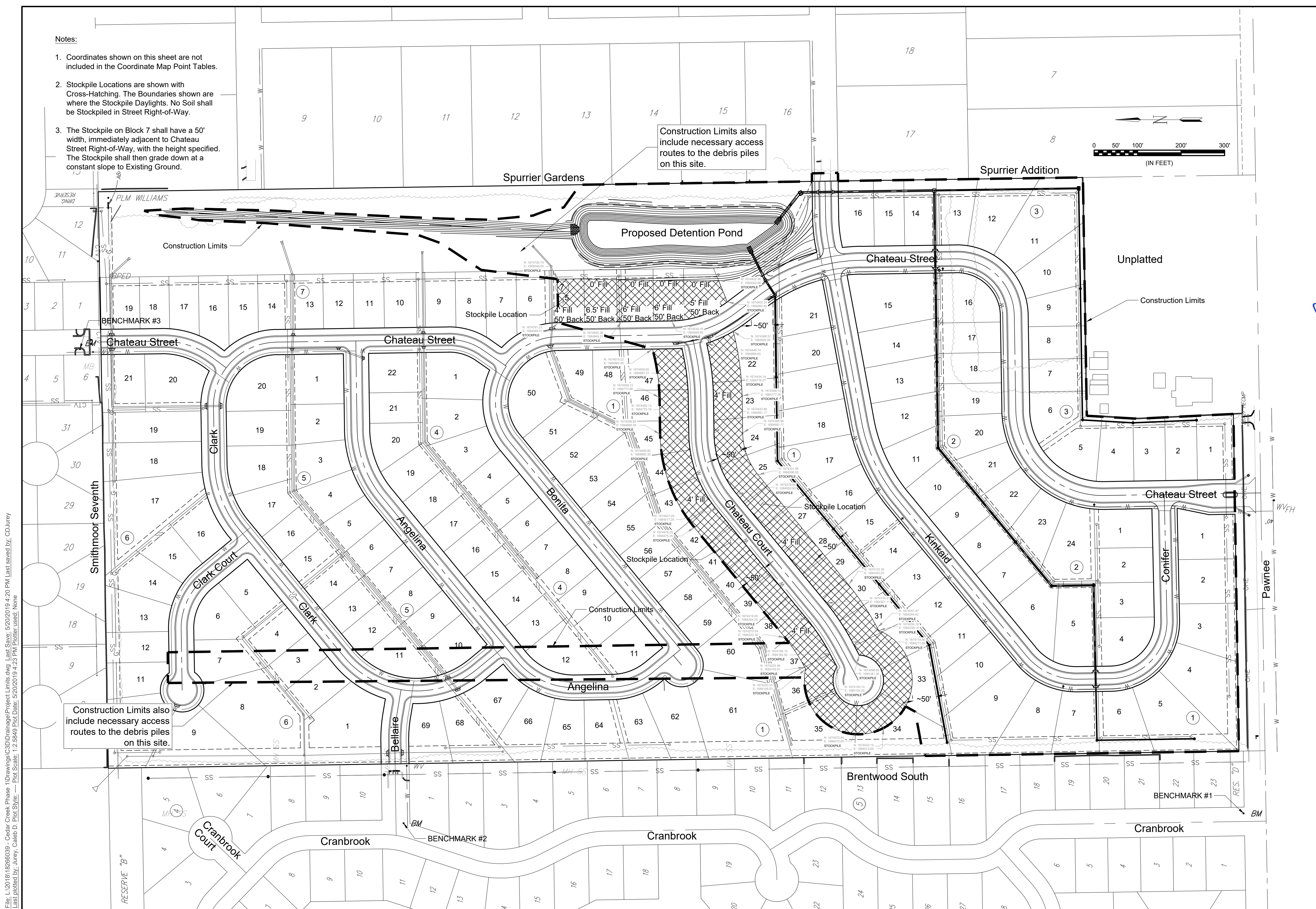
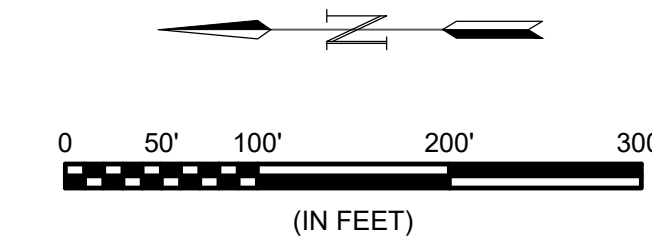


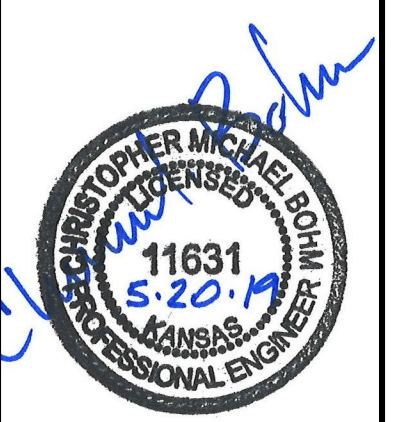
Notes:

- Coordinates shown on this sheet are not included in the Coordinate Map Point Tables.
- Stockpile Locations are shown with Cross-Hatching. The Boundaries shown are where the Stockpile Daylights. No Soil shall be Stockpiled in Street Right-of-Way.
- The Stockpile on Block 7 shall have a 50' width, immediately adjacent to Chateau Street Right-of-Way, with the height specified. The Stockpile shall then grade down at a constant slope to Existing Ground.

Construction Limits also include necessary access routes to the debris piles on this site.



© 2019 GARVER, LLC
 THIS DOCUMENT, ALONG WITH THE IDEAS AND DESIGNS CONVEYED HEREIN, SHALL BE CONSIDERED INSTRUMENTS OF PROFESSIONAL SERVICE AND ARE PROPERTY OF GARVER, LLC. ANY USE, REPRODUCTION, OR DISTRIBUTION OF THIS DOCUMENT, ALONG WITH THE IDEAS AND DESIGN CONTAINED HEREIN, IS PROHIBITED UNLESS AUTHORIZED IN WRITING BY GARVER, LLC OR EXPLICITLY ALLOWED IN THE GOVERNING PROFESSIONAL SERVICES AGREEMENT FOR THIS WORK.



REV.	DATE	DESCRIPTION	BY



CITY OF WICHITA
 WICHITA, KANSAS
 CEDAR CREEK ADD,
 PHASE 1

Project Limits

JOB NO.: 18266039
 DATE: March 2019
 DESIGNED BY: CMB
 DRAWN BY: CDJ

BAR IS ONE INCH ON ORIGINAL DRAWING
 IF NOT ONE INCH ON THIS SHEET, ADJUST SCALES ACCORDINGLY.

DRAWING NUMBER
 SHEET NUMBER **2** OF **39**

File: L:\2018\18266039 - Cedar Creek Phase 1\Drawings\C3\Drainage\Project Limits.dwg, Last Save: 5/20/2019 4:20 PM, Last saved by: CDJ, Jurey
 Last plotted by: Jurey, Caleb D., Plot Style: ---, Plot Scale: 1:2,584.9, Plot Date: 5/20/2019 4:23 PM, Plotter used: None