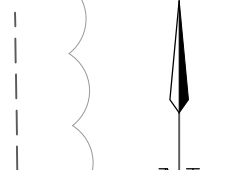
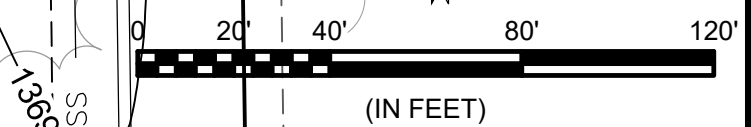
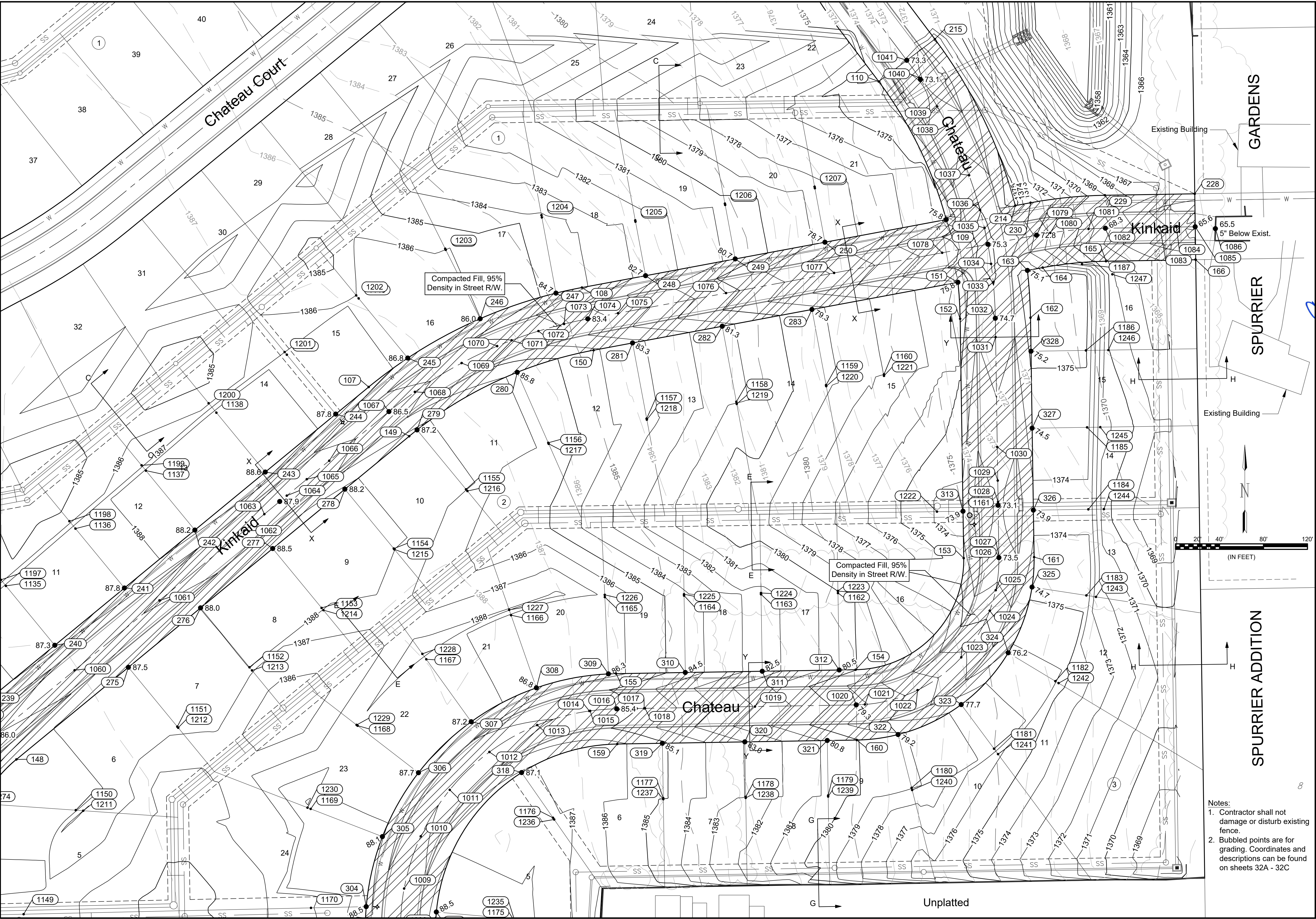
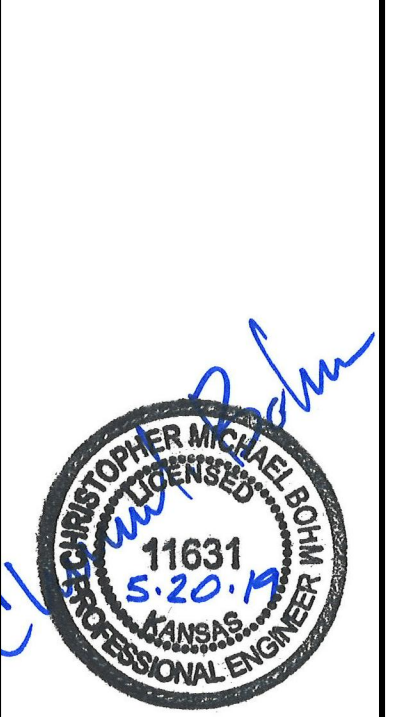


File: L:\2018\18266039 - Cedar Creek Phase 1\Drawings\C3\Drainage\Overall Grading.dwg, Last Save: 5/20/2019 3:49 PM, Last saved by: CDJurey
 Last plotted by: Jurey, Caleb D., Plot Date: 5/20/2019 4:43 PM, Plotter used: None



- Notes:
- Contractor shall not damage or disturb existing fence.
 - Bubbled points are for grading. Coordinates and descriptions can be found on sheets 32A - 32C

GARVER
 © 2019 GARVER, LLC
 THIS DOCUMENT, ALONG WITH THE IDEAS AND DESIGNS CONVEYED HEREIN, SHALL BE CONSIDERED INSTRUMENTS OF PROFESSIONAL SERVICE AND ARE PROPERTY OF GARVER, LLC. ANY USE, REPRODUCTION, OR DISTRIBUTION OF THIS DOCUMENT, ALONG WITH THE IDEAS AND DESIGN CONTAINED HEREIN, IS PROHIBITED UNLESS AUTHORIZED IN WRITING BY GARVER, LLC OR EXPLICITLY ALLOWED IN THE GOVERNING PROFESSIONAL SERVICES AGREEMENT FOR THIS WORK.



REV.	DATE	DESCRIPTION	BY



CITY OF WICHITA
 WICHITA, KANSAS
 CEDAR CREEK ADD.,
 PHASE 1

Main Site
 Grading

JOB NO.: 18266039
 DATE: March 2019
 DESIGNED BY: CMB
 DRAWN BY: CDJ
 BAR IS ONE INCH ON ORIGINAL DRAWING
 IF NOT ONE INCH ON THIS SHEET, ADJUST SCALES ACCORDINGLY.
 DRAWING NUMBER
 SHEET NUMBER **19** OF **39**