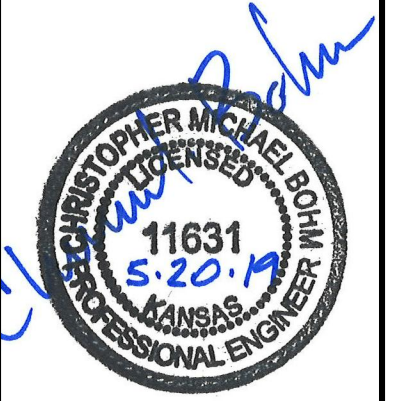




© 2019 GARVER, LLC
 THIS DOCUMENT, ALONG WITH THE IDEAS AND DESIGNS CONVEYED HEREIN, SHALL BE CONSIDERED INSTRUMENTS OF PROFESSIONAL SERVICE AND ARE PROPERTY OF GARVER, LLC. ANY USE, REPRODUCTION, OR DISTRIBUTION OF THIS DOCUMENT, ALONG WITH THE IDEAS AND DESIGNS CONTAINED HEREIN, IS PROHIBITED UNLESS AUTHORIZED IN WRITING BY GARVER, LLC OR EXPLICITLY ALLOWED IN THE GOVERNING PROFESSIONAL SERVICES AGREEMENT FOR THIS WORK.



REV.	DATE	DESCRIPTION	BY



CITY OF WICHITA
 WICHITA, KANSAS
 CEDAR CREEK ADD.,
 PHASE 1

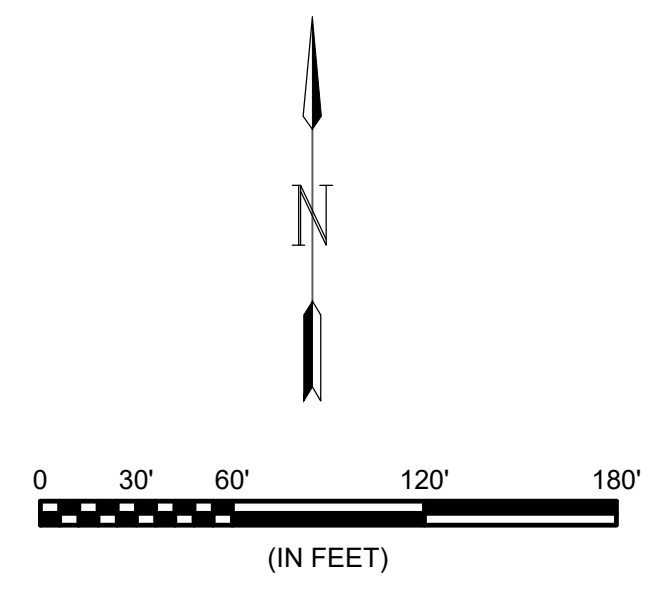
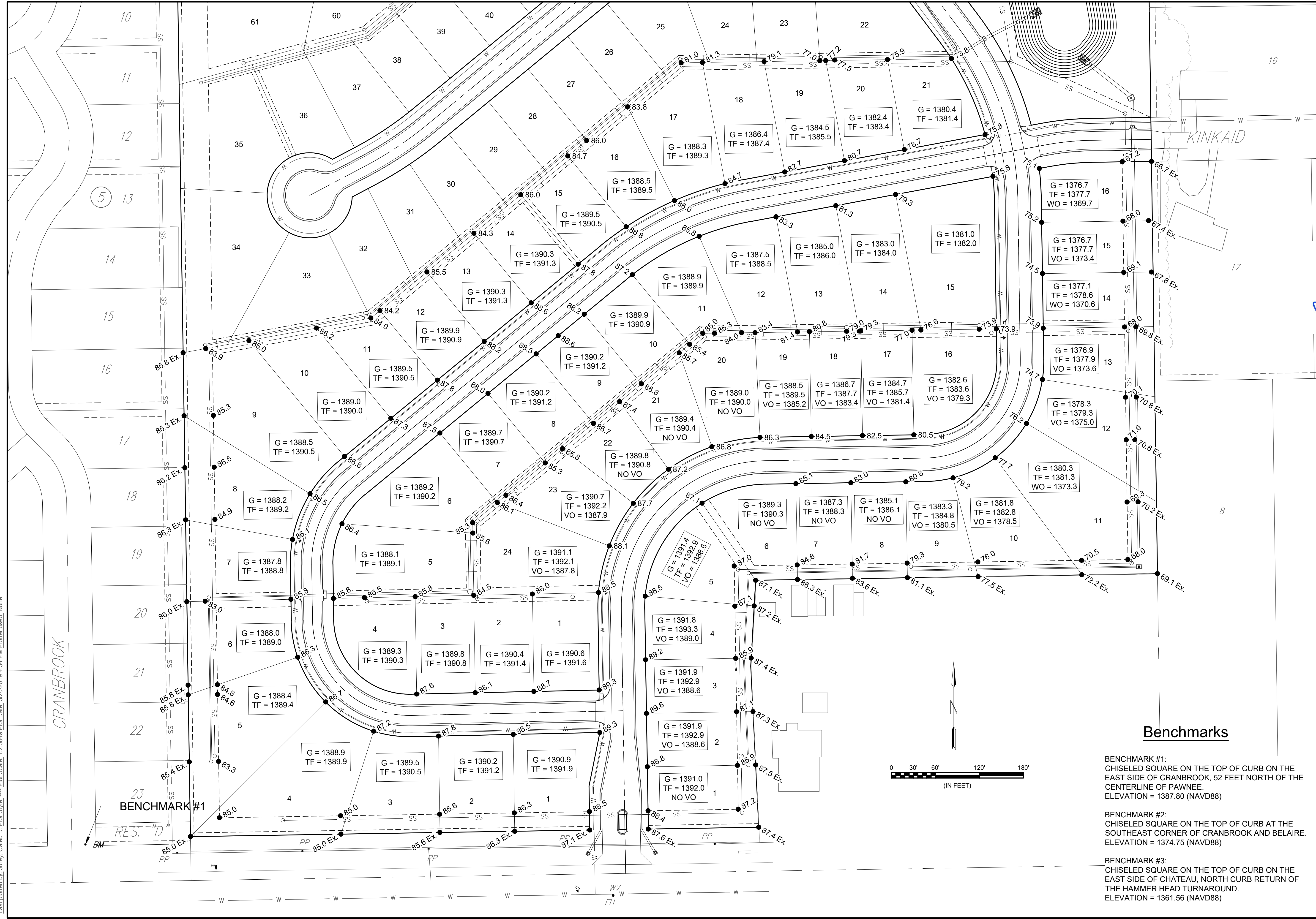
Four-Corner
 Grading

JOB NO.: 18266039
 DATE: March 2019
 DESIGNED BY: CMB
 DRAWN BY: CDJ

BAR IS ONE INCH ON ORIGINAL DRAWING
 IF NOT ONE INCH ON THIS SHEET, ADJUST SCALES ACCORDINGLY.

DRAWING NUMBER

SHEET NUMBER **30** OF **39**



- Benchmarks**
- BENCHMARK #1:**
 CHISELED SQUARE ON THE TOP OF CURB ON THE EAST SIDE OF CRANBROOK, 52 FEET NORTH OF THE CENTERLINE OF PAWNEE.
 ELEVATION = 1387.80 (NAVD88)
 - BENCHMARK #2:**
 CHISELED SQUARE ON THE TOP OF CURB AT THE SOUTHEAST CORNER OF CRANBROOK AND BELAIRE.
 ELEVATION = 1374.75 (NAVD88)
 - BENCHMARK #3:**
 CHISELED SQUARE ON THE TOP OF CURB ON THE EAST SIDE OF CHATEAU, NORTH CURB RETURN OF THE HAMMER HEAD TURNAROUND.
 ELEVATION = 1361.56 (NAVD88)

File: L:\2018\18266039 - Cedar Creek Phase 1\Drawings\C3\Drainage\Four-Corner Grading.dwg Last Save: 5/14/2019 10:25 AM Last saved by: CDJurey
 Last plotted by: Jurey, Caleb D. Plot Style: --- Plot Date: 5/20/2019 4:54 PM Plotter used: None