



© 2019 GARVER, LLC
 THIS DOCUMENT, ALONG WITH THE IDEAS AND DESIGNS CONVEYED HEREIN, SHALL BE CONSIDERED INSTRUMENTS OF PROFESSIONAL SERVICE AND ARE PROPERTY OF GARVER, LLC. ANY USE, REPRODUCTION, OR DISTRIBUTION OF THIS DOCUMENT, ALONG WITH THE IDEAS AND DESIGN CONTAINED HEREIN, IS PROHIBITED UNLESS AUTHORIZED IN WRITING BY GARVER, LLC OR EXPLICITLY ALLOWED IN THE GOVERNING PROFESSIONAL SERVICES AGREEMENT FOR THIS WORK.



REV.	DATE	DESCRIPTION	BY



CITY OF WICHITA
 WICHITA, KANSAS
 CEDAR CREEK ADD,
 PHASE 1

Storm Sewer 1

JOB NO.: 18266039
 DATE: March 2019
 DESIGNED BY: CMB
 DRAWN BY: CDJ

BAR IS ONE INCH ON ORIGINAL DRAWING
 IF NOT ONE INCH ON THIS SHEET, ADJUST SCALES ACCORDINGLY.

DRAWING NUMBER

Unplatted

Owners:
 Treadwell & Theaa de Voe

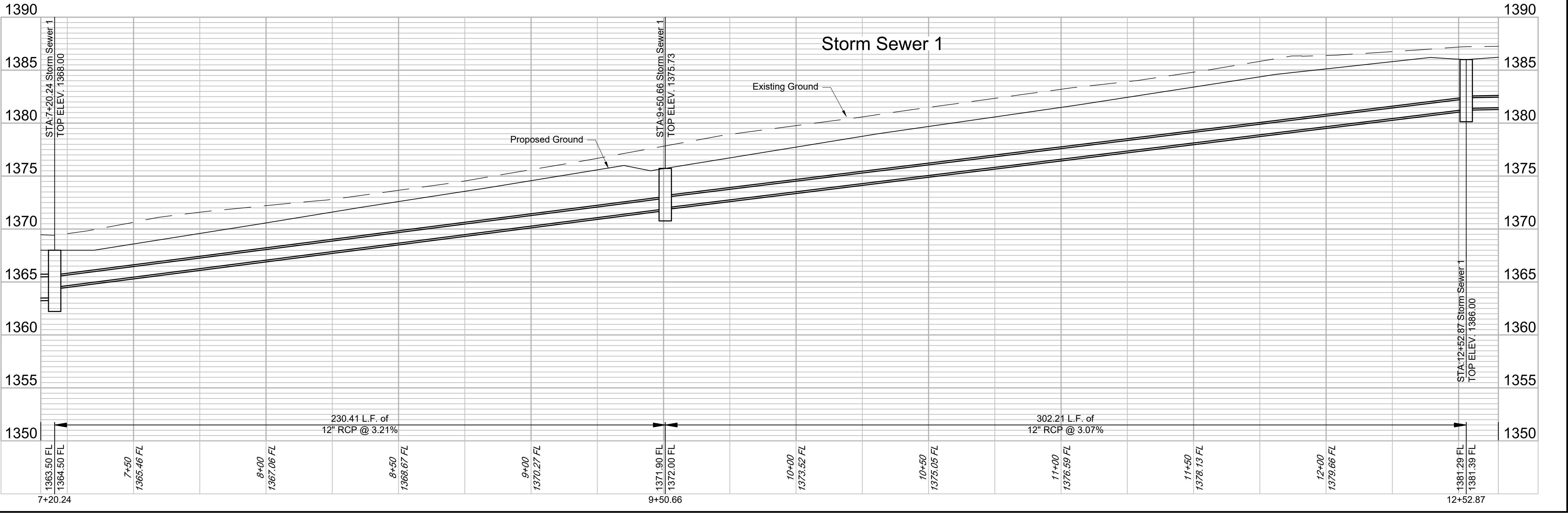
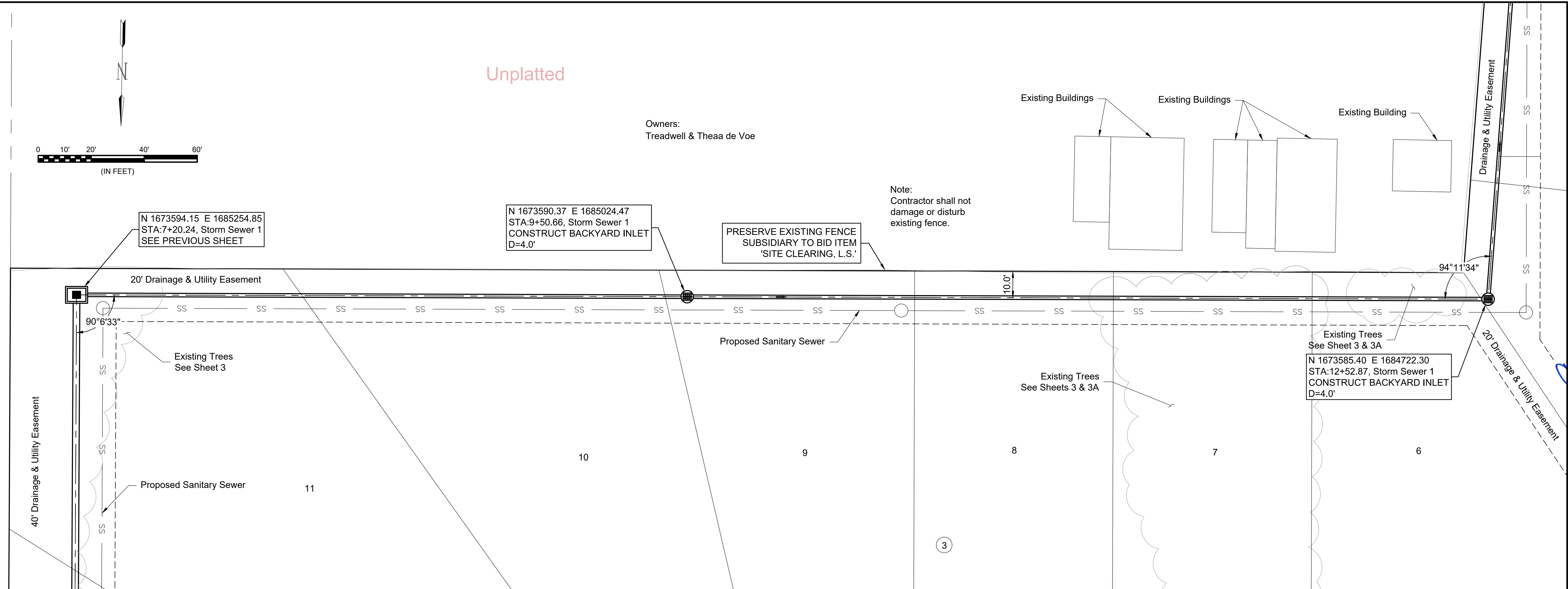
Note:
 Contractor shall not damage or disturb existing fence.

PRESERVE EXISTING FENCE SUBSIDIARY TO BID ITEM 'SITE CLEARING, L.S.'

N 1673590.37 E 1685024.47
 STA:9+50.66, Storm Sewer 1
 CONSTRUCT BACKYARD INLET
 D=4.0'

N 1673594.15 E 1685254.85
 STA:7+20.24, Storm Sewer 1
 SEE PREVIOUS SHEET

N 1673585.40 E 1684722.30
 STA:12+52.87, Storm Sewer 1
 CONSTRUCT BACKYARD INLET
 D=4.0'



File: L:\2018\18266039 - Cedar Creek Phase 1\Drawings\C3D\Drainage\04 - Storm Sewer 1.dwg Last Save: 5/14/2019 9:01 AM Last saved by: CDJurey
 Last plotted by: Jurey, Caleb D. Plot Date: 5/20/2019 4:28 PM Plotter used: None