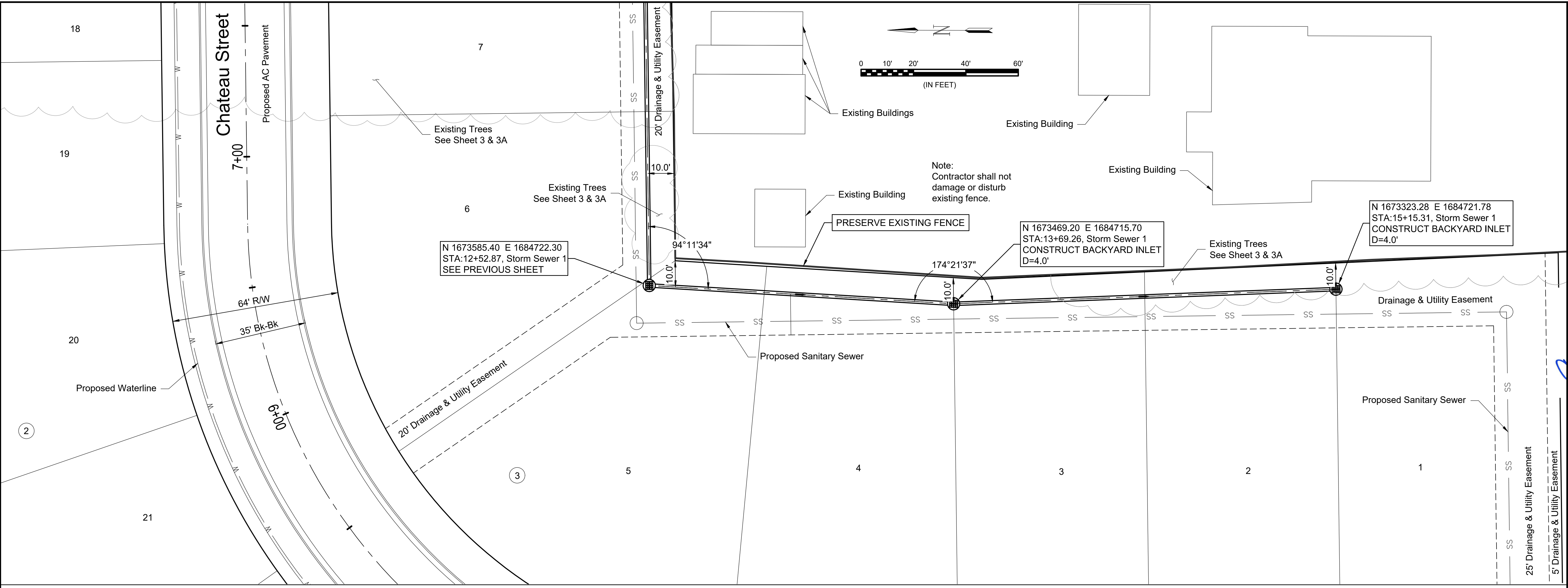


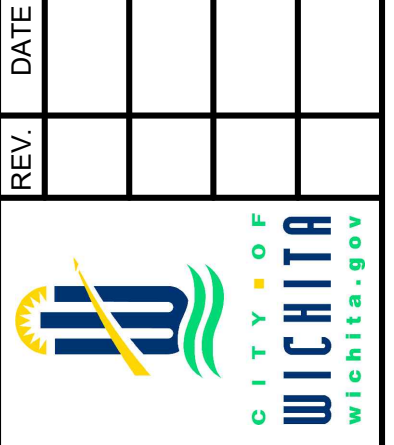
File: L:\2018\18266039 - Cedar Creek Phase 1\Drawings\C3D\Drainage\05 - Storm Sewer 1.dwg, Last Save: 5/14/2019 9:01 AM, Last saved by: CDJurey
 Last plotted by: Jurey, Caleb D., Plot Style: ---, Plot Scale: 1:2,584.9, Plot Date: 5/20/2019 4:29 PM, Plotter Used: None



GARVER
 © 2019 GARVER, LLC
 THIS DOCUMENT, ALONG WITH THE IDEAS AND DESIGNS CONVEYED HEREIN, SHALL BE CONSIDERED INSTRUMENTS OF PROFESSIONAL SERVICE AND ARE PROPERTY OF GARVER, LLC. ANY USE, REPRODUCTION, OR DISTRIBUTION OF THIS DOCUMENT, ALONG WITH THE IDEAS AND DESIGN CONTAINED HEREIN, IS PROHIBITED UNLESS AUTHORIZED IN WRITING BY GARVER, LLC OR EXPLICITLY ALLOWED IN THE GOVERNING PROFESSIONAL SERVICES AGREEMENT FOR THIS WORK.

CHRISTOPHER MICHAEL BOWEN
 11631
 5.20.19
 KANSAS
 PROFESSIONAL ENGINEER

REV.	DATE	DESCRIPTION	BY



CITY OF WICHITA
 WICHITA, KANSAS
 CEDAR CREEK ADD,
 PHASE 1

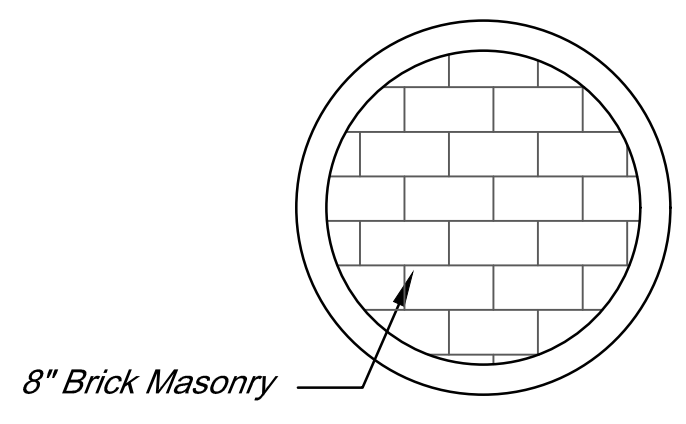
Storm Sewer 1

JOB NO.: 18266039
 DATE: March 2019
 DESIGNED BY: CMB
 DRAWN BY: CDJ

BAR IS ONE INCH ON ORIGINAL DRAWING
 0 1" IF NOT ONE INCH ON THIS SHEET, ADJUST SCALES ACCORDINGLY.

DRAWING NUMBER

SHEET NUMBER **7** OF **39**



PIPE PLUG DETAIL
 See Sheet 12

- Mortar used in plug construction shall be in accordance with standard specifications.
- All brick used in stack construction shall meet Grade ASTM C32 for MM and MS.
- Pipe plugs shall be Subsidiary to the bid item '18" Reinforced Concrete Pipe, L.F.'

