

GENERAL NOTES:

1. Contractor will be required to provide notice to utility companies a minimum of seventy-two (72) hours prior to any excavation, as follows:

Kansas One-Call 687-2470

The Contractor must notify the following in case of an emergency:

AT&T 1-800-246-8464
 Black Hills Energy 1-800-694-8989
 City of Wichita Water & Sewer 1-316-219-8921
 City of Wichita Stormwater 1-316-268-4090
 City of Wichita Traffic 1-316-268-4034
 Cox Communications 1-888-249-3530
 Kansas Gas Service 1-888-482-4950
 Westar Energy 1-800-544-4857

2. Utility service lines, poles, etc. are to be adjusted as necessary by others prior to construction unless the plans specifically call for their adjustment by the Contractor or unless the plans specifically identify a utility to be adjusted by its owner during construction. Existing utilities and their location, as shown on the plans, represent the best information obtainable for design. The Contractor will be required to work around existing utilities within the right-of-way which do not conflict with proposed construction.

3. Rubble from the removal of miscellaneous structures and excess excavation which is to be wasted shall be disposed of on sites to be provided by the Contractor. These sites shall be approved by the Engineer as to suitability, appearance and site location. Locations, in the opinion of the Engineer, that will leave an unsightly appearance will not be approved. All disposal sites must be approved by the Kansas Department of Health and Environment. Material either stockpiled or disposed of in a flood plain will require a Kansas State Board of Agriculture permit. Any material dumped in waters of the United States or wetlands is subject to U.S. Corps of Engineers permitting regulations. Any material buried or stockpiled beyond approved construction limits will require additional archaeological investigations unless buried in a previously approved borrow location.

4. Trees and shrubs in public right-of-way which are in direct conflict with proposed new construction shall be removed by the Contractor with the City Engineer's approval. Trees and shrubs which are not in direct conflict with proposed new construction shall be saved and protected from damage.

5. The Contractor shall give all property owners and/or tenants of developed property abutting the construction of this project a minimum of ten (10) days notice prior to start of construction.

6. The Contractor shall be responsible for preserving property irons. The Contractor will be required to re-establish any property irons which are damaged or destroyed by his construction operations. Such irons shall be re-established by a licensed land surveyor in accordance with state laws.

7. A portion of excess excavated material shall be mounded around manholes which extend more than one (1) foot above the existing ground. Such mound shall be constructed with new development a six (6) foot diameter flat top with 4 to 1 side slopes down to the original ground. The elevation of the flat top of the mound shall be 0.4 foot below the top of the manhole.

8. Contractor shall limit the extent of trench openings overnight and weekends to less than 50 feet.

9. The Contractor shall protect from damage and support existing utilities through construction as approved by the utility owner and the Engineer at the contractor's expense.

10. All existing and proposed erosion control measures including silt fencing, erosion control mat, straw bales, inlet barriers, and const. entrance shall be maintained throughout construction by the contractor and until project is accepted by the City of Wichita. The on-site engineer shall complete weekly reports on the status of erosion control measures. The contractor shall be required to comply with maintenance and/or replacement of erosion control measures as determined by the on-site engineer until project is accepted by City of Wichita. Maintenance and/or replacement of erosion control measures to be paid by L.S. bid item "Maintain Existing BMPs".

11. All excess excavation shall remain on-site and shall be stockpiled as indicated on fill plan.

12. All of Res. "A, B, C, & D" above the water surface that have been disturbed by construction shall be seeded and mulched as follows:

Seed -- Kansas Premium Fescue Blend; 8 lbs. PLS/1000 Sq. Ft.
 Annual Rye grass; 3 lbs./1000 Sq. Ft.
 Fertilizer -- 12-24-12 Ratio; 45 Lbs./Ac.
 Mulch -- 2 Tons Prairie Hay/Ac.

All other disturbed areas within street R/W and lots are to be seeded as follows:

Seed -- Rye grass; 5 lbs./1000 Sq. Ft.

All costs associated with seeding including mobilization, preparation of ground, seeding, fertilizing, mulching, etc. shall be included in the L.S. bid item "Seeding".

An additional bid item for "Seeding, Temporary" has been included and may be used at the discretion of the design engineer. Temporary seed shall be Annual Rye at 5 lbs./1000 Sq. Ft. unless otherwise noted and shall be planted when permanent seed or sod cannot be used due to seasonal limitations. If the "Seeding, Temporary" bid item is not used, 100% of the pay item will be deducted from the contract. All costs associated with temporary seeding including mobilization, preparation of ground, seeding, etc., shall be included in the L.S. bid item "Seeding, Temporary".

13. The developer for this project is Jay W. Russell, P.O. Box 75337, Wichita, KS 67272 (316)722-2417 jwrussell1105@cloud.com

14. This SWD project is planned to begin as soon as possible. The sanitary sewer project will be under construction by McCullough Excavation at the start of the SWD project. McCullough Excavation and the SWD contractor will coordinate construction to allow both contractors to work concurrently. Prior to SWD construction, a meeting will occur to discuss work areas and order of construction. Excavation will be allowed over proposed sewer lines, but no fill shall be placed over proposed sanitary sewer lines until sanitary sewer has been constructed.

Benchmark

BM #1: City of Wichita dis. top of headwall of RCBC 660± east of the SE Cor. of the SE1/4, SEC. 22, TWP. 27-S, R-2-W. Elev. = 1410.27 NAVD88

BM #2: 60d step nail in utility pole 28' east of Q 162nd St. W. and 26' north of Q of Maple. Elev. = 1417.99 NAVD88

SWD #449 WITH INCIDENTAL SWS IMPROVEMENTS to serve PIKE ADDITION - PH. I

CITY OF WICHITA, KANSAS

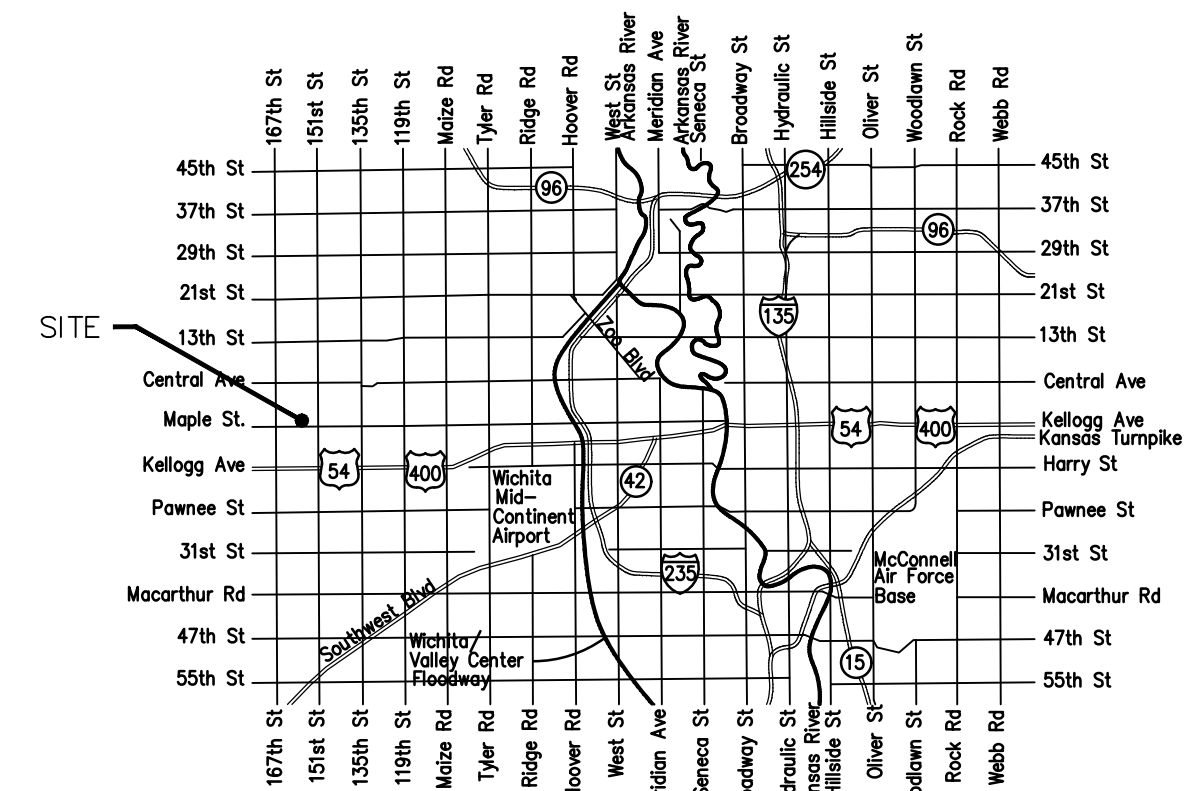
Gary Janzen, P.E. City Engineer

Project Number

468-85404

O.C.A. Number

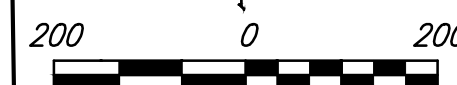
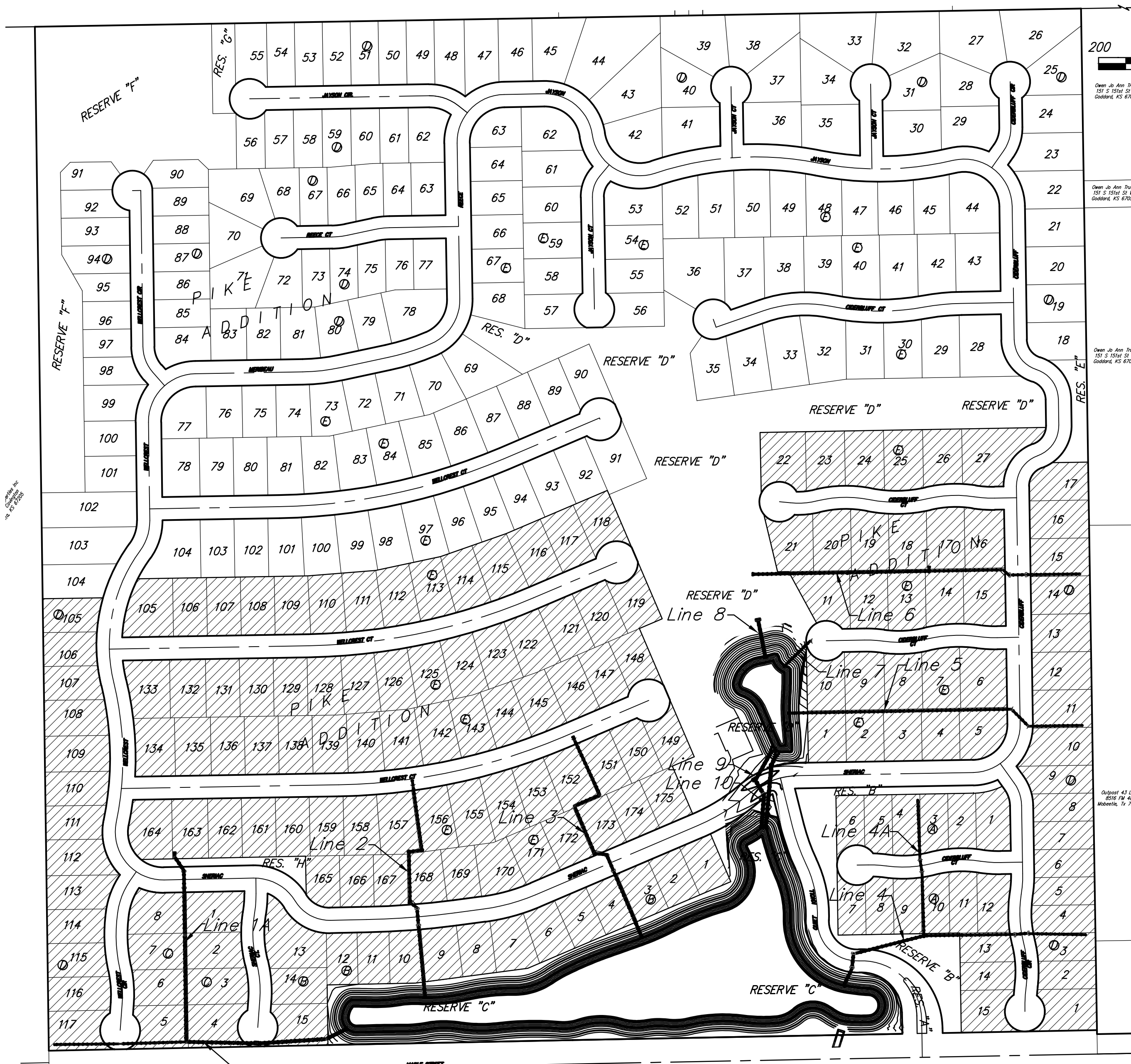
751593



Vicinity Map

Sheet Index

Title Sheet	1
Line 1	2-3
Line 1A	4
Line 2	5
Line 3	6-7
Line 4	8-9
Line 4A	10
Line 5	11-12
Line 6	13-14
Lines 7 & 8	15
Lines 9 & 10	16
Mass Grading/Erosion Control Plan	17-18
Compaction/Testing Table	18A
Pond Plan A	19
Weir/Drop Structure Detail	19A
Pond Plan B & Berm	20
Fill Plan	21-22
Type 1A Inlet L=5' and 10' Detail	23
Pavement Underdrain Detail	24
Backyard Inlet Detail	25
Grated Driveway Inlet (Double) Detail	26
Inlet-MH Detail	27
Precast Concrete Manhole Detail	28
MH-Inlet Frame & Cover Detail	29
Miscellaneous Detail	30
Headwall 42-48 Detail	31
Mass Grading Detail	32
Erosion Control BMP Details	33-37
Coordinate Sheet	38-39
Copy of Plat	40

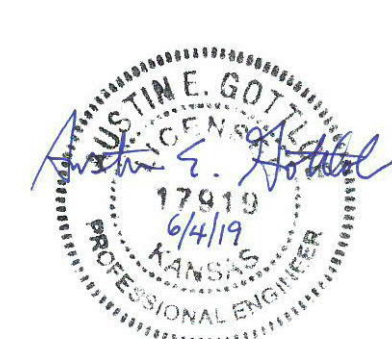


Open to Air Swat
 20' x 20' or 30' x 30' W
 Control, KS 67052

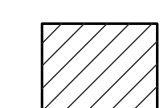
Open to Air Swat
 20' x 20' or 30' x 30' W
 Control, KS 67052

Open to Air Swat
 20' x 20' or 30' x 30' W
 Control, KS 67052

Open to Air Swat
 20' x 20' or 30' x 30' W
 Control, KS 67052



Benefit District



June 2019



Baughman Company, P.A. 315 Ellis St. Wichita, KS 67211 P 316-262-7271 F 316-262-0148
 ENGINEERING | SURVEYING | PLANNING | LANDSCAPE ARCHITECTURE