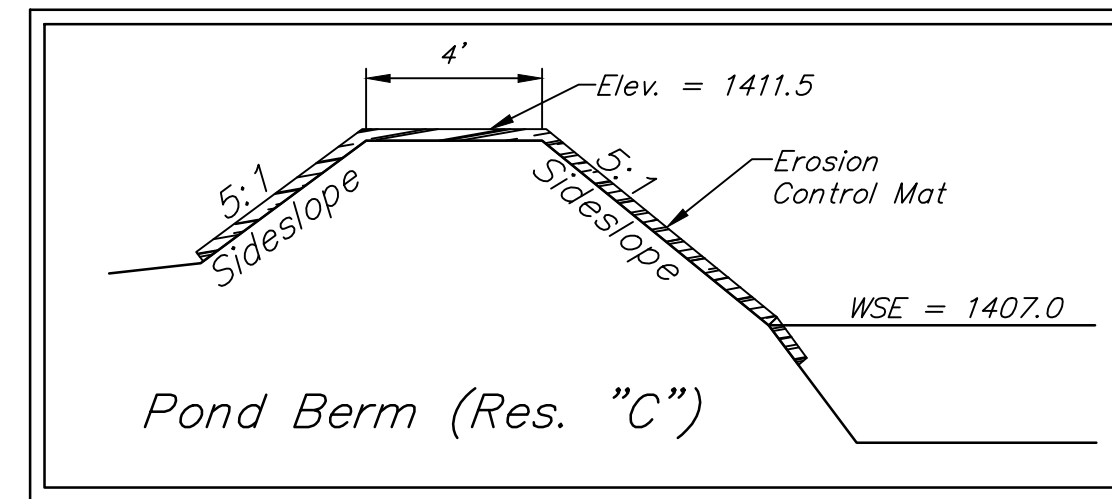
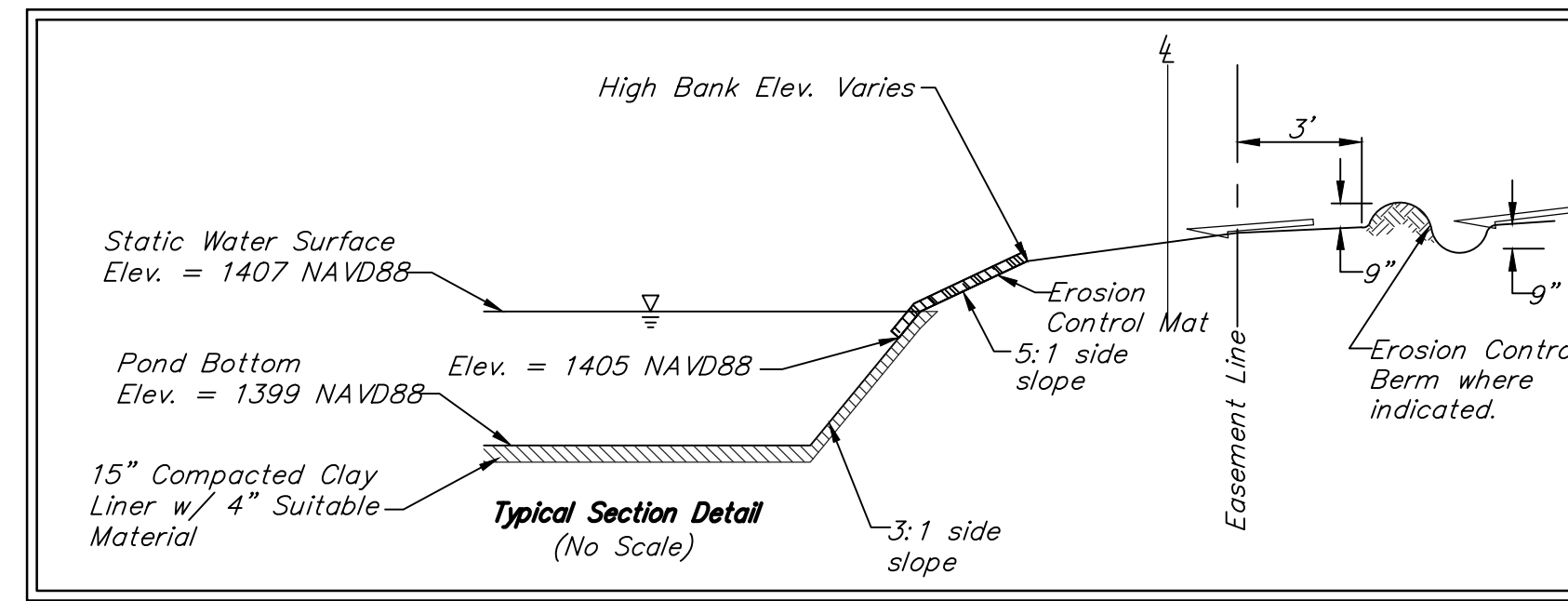


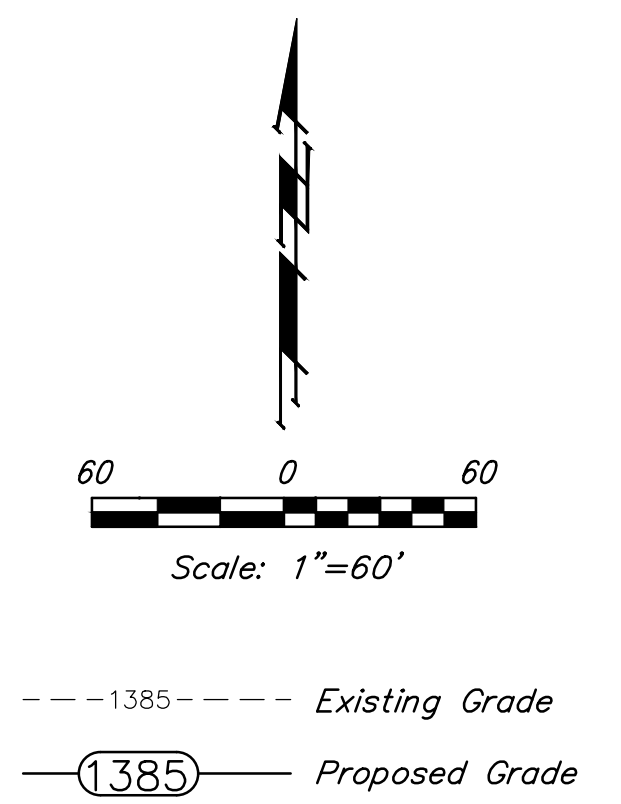
NOTES:

- Pond bottom and side slopes below static pool elevation shall be over-excavated 19" and a 15" clay liner shall be compacted to 95% std. density. The plasticity index (P.I.) shall be at least 27. The best and most suitable on-site material shall be used for the pond liner. The compaction and P.I. shall be verified during construction. 4" of suitable on-site material shall be distributed on top of the clay liner below the static pool elevation to protect the clay liner. P.I. determination and compaction testing shall be arranged by the contractor at the request of the inspector. Cost shall be incidental to "Testing". Cost of over-excavation to install Clay Liner shall be incidental to bid item, "Excavation."
- Any excess excavation shall be spread and compacted on-site as indicated on the fill plan.
- All areas disturbed by construction shall be seeded as indicated on cover sheet.
- Install Erosion Control Mat (Curlex II or approved equal) from 2' below the water surface to top bank. To be paid for as bid item "Erosion Control Mat".
- See Mass Grading Plan for notes on topsoil stripping and redistribution.
- Compaction of 95% shall be obtained in all street R/W's, pond liner, and all other areas. Compaction requirements shall be placed within ±2% of optimum moisture content of the soil at the time of placement. All testing shall be incidental to Lump Sum bid item "Testing".

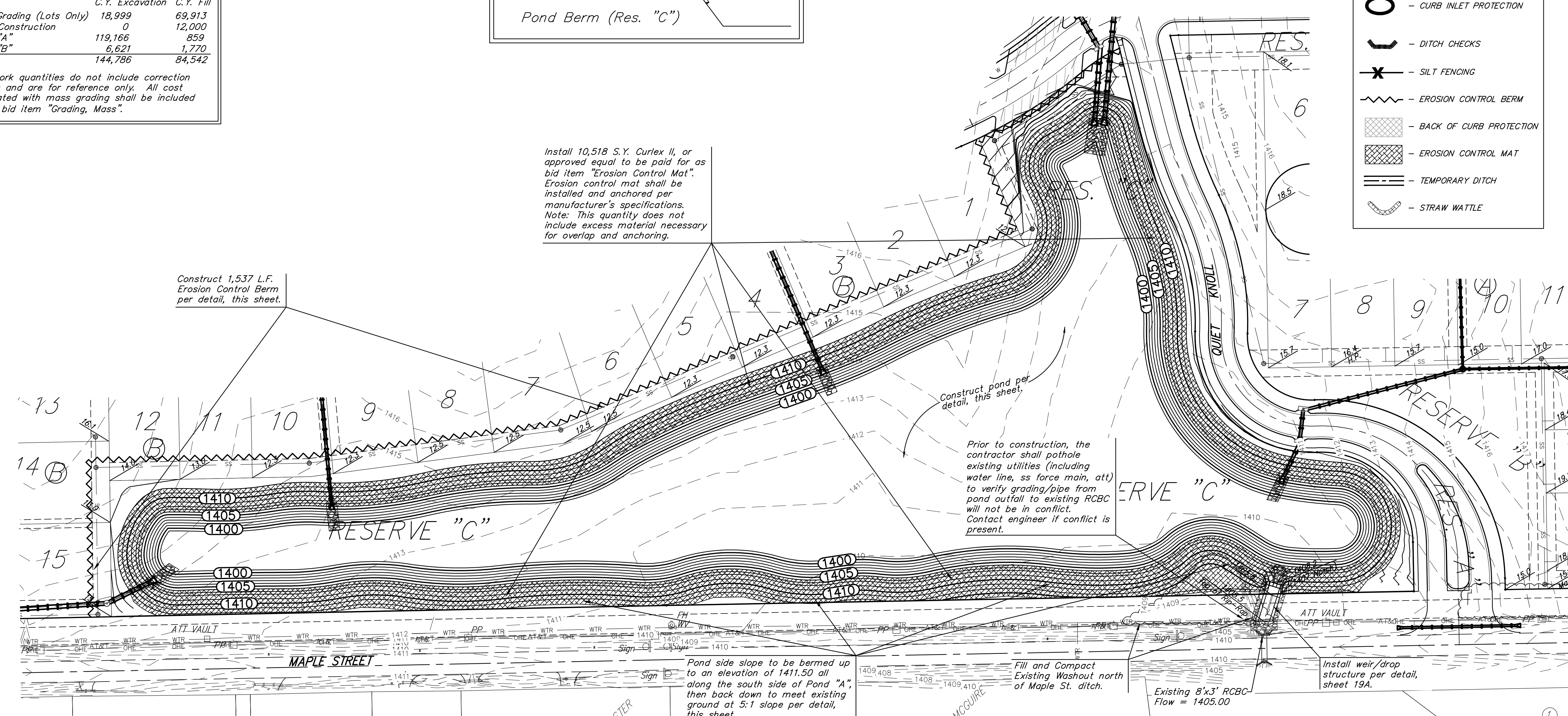


EARTH WORK TOTALS		
	C.Y. Excavation	C.Y. Fill
Mass Grading (Lots Only)	18,999	69,913
Berm Construction	0	12,000
Pond "A"	119,166	859
Pond "B"	6,621	1,770
Total	144,786	84,542

Earthwork quantities do not include correction factors and are for reference only. All cost associated with mass grading shall be included in the bid item "Grading, Mass".



EROSION CONTROL PLAN LEGEND	
	- DROP INLET PROTECTION
	- CURB INLET PROTECTION
	- DITCH CHECKS
	- SILT FENCING
	- EROSION CONTROL BERM
	- BACK OF CURB PROTECTION
	- EROSION CONTROL MAT
	- TEMPORARY DITCH
	- STRAW WATTLE



Install 10,518 S.Y. Curlex II, or approved equal to be paid for as bid item "Erosion Control Mat". Erosion control mat shall be installed and anchored per manufacturer's specifications. Note: This quantity does not include excess material necessary for overlap and anchoring.

Pond side slope to be bermed up to an elevation of 1411.50 all along the south side of Pond "A", then back down to meet existing ground at 5:1 slope per detail, this sheet.

Prior to construction, the contractor shall pothole existing utilities (including water line, ss force main, att) to verify grading/pipe from pond outfall to existing RCBC will not be in conflict. Contact engineer if conflict is present.

Install weir/drop structure per detail, sheet 19A.