

J:\PROJECTS\2018\1601010451\_Mt. VERNON AND HILLSIDE\_160151 CAD\SHS\06 CIVIL\PAV\161514E4M.DWG  
 PLOTTED: Wednesday, April 17, 2018 @ 11:24AM



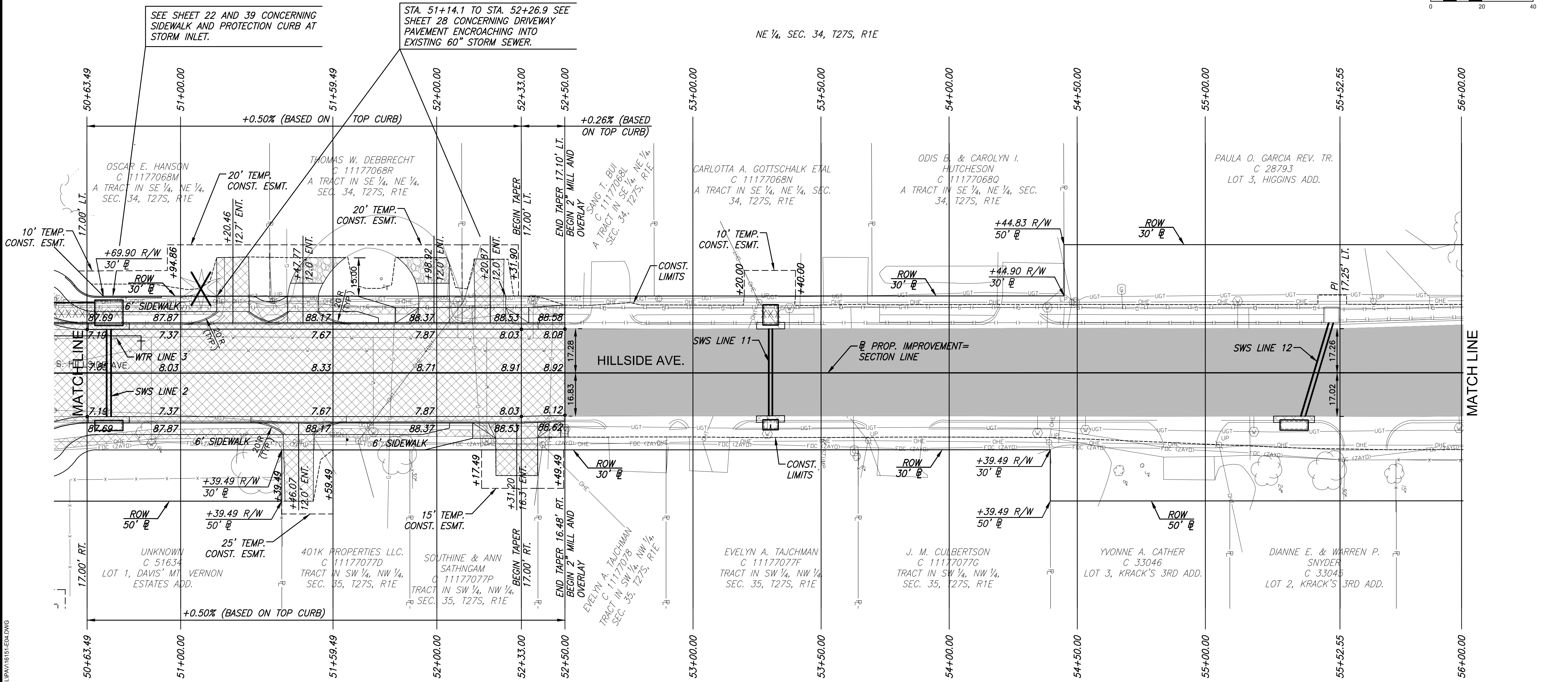
**STREET IMPROVEMENTS FOR**  
**MT. VERNON & HILLSIDE INTERSECTION**  
**PAVING PLANS**

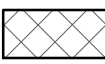



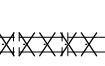

©2018 MKEC Engineering  
 All Rights Reserved  
 www.mkec.com  
 These drawings and their contents, including, but not limited to, all concepts, designs, & ideas are the exclusive property of MKEC Engineering (MKEC), and may not be used or reproduced in any way without the express consent of MKEC.

**HILLSIDE AVE.**  
**PAVING PLAN**

PROJECT NO.	472-85286	
DATE	DATE	
SCALE	1"=20'	
DESIGNED	DRAWN	CHECKED
DMU	WNJ	JRA
NO.	REVISION	DATE

SHEET NO.  
**8 OF 101**



- LEGEND**
-  Pavement Removal
  -  Construct Wheelchair Ramp See Sh. No. 30
  -  2" Mill and Overlay
  -  Brick Pavers
  -  Storm Sewer Removal
  -  Permanent Pavement Patch, See Sh. No. 41