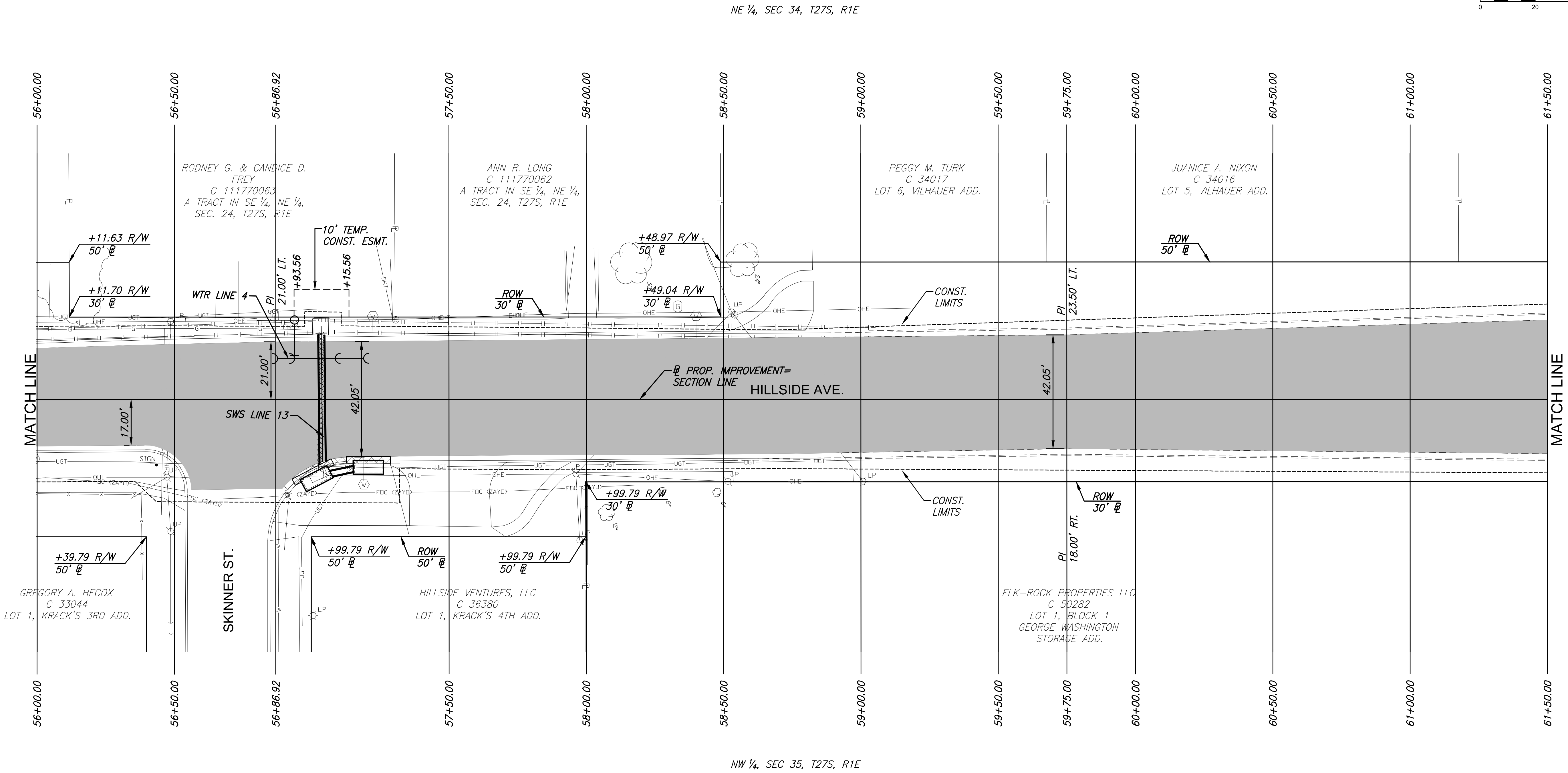


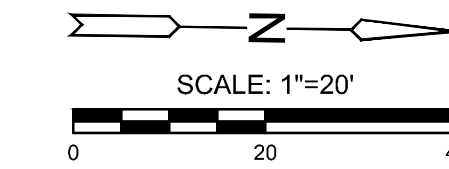
PLOTTED: Tuesday, April 16, 2019 @ 04:53PM

J:\PROJECTS\2018\160101451_MT. VERNON AND HILLSIDE_160151_CADD\SHOTS\06_CIVIL\PAV\161514E66.DWG



NE 1/4, SEC 34, T27S, R1E

NW 1/4, SEC 35, T27S, R1E



STREET IMPROVEMENTS FOR
MT. VERNON & HILLSIDE INTERSECTION
PAVING PLANS

©2019 MKEC Engineering All Rights Reserved www.mkec.com
These drawings and their contents, including, but not limited to, all concepts, designs, & ideas are the exclusive property of MKEC Engineering (MKEC), and may not be used or reproduced in any way without the express consent of MKEC.

HILLSIDE AVE. PAVING PLAN

PROJECT NO.	472-85286	
DATE	DATE	
SCALE	1"=20'	
DESIGNED	DRAWN	CHECKED
DMU	WNJ	JRA
NO.	REVISION	DATE

SHEET NO.
9 OF 101

- LEGEND**
- Pavement Removal
 - Construct Wheelchair Ramp See Sh. No. 30
 - 2" Mill and Overlay
 - Brick Pavers
 - Storm Sewer Removal
 - Permanent Pavement Patch, See Sh. No. 41