

STREET IMPROVEMENTS FOR

MT. VERNON & HILLSIDE INTERSECTION

PAVING PLANS

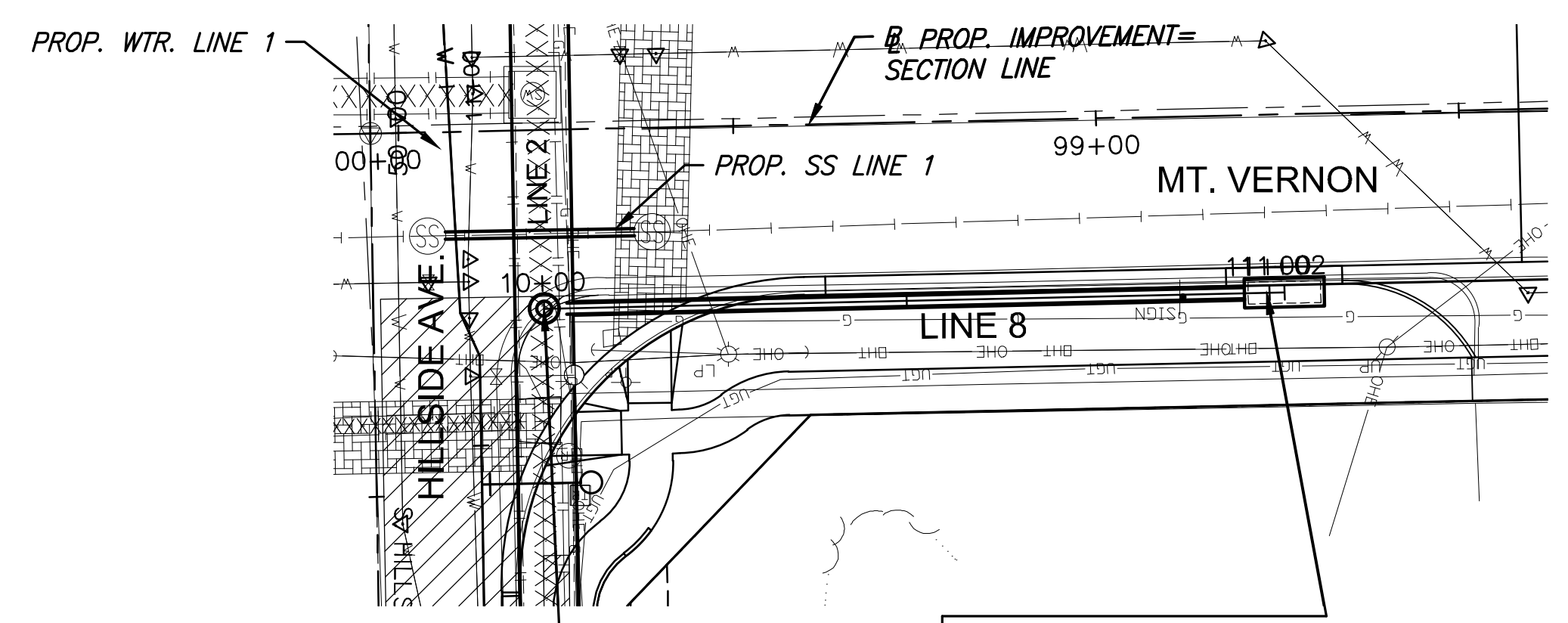
©2019 MKEC Engineering All Rights Reserved
www.mkec.com
These drawings and their contents, including, but not limited to, all concepts, designs, & ideas are the exclusive property of MKEC Engineering (MKEC), and may not be used or reproduced in any way without the express consent of MKEC.

STORM SEWER PLAN & PROFILE LINE 8, 9, & 10

PROJECT NO.	472-85286	
DATE	DATE	
SCALE	1"=20'	
DESIGNED	DRAWN	CHECKED
DMU	WNJ	JRA
NO.	REVISION	DATE

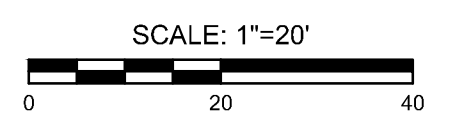
SHEET NO.
18 OF 101


PLOTTED: Tuesday, April 30, 2019 @ 02:44PM
J:\PROJECTS\2019\1601010151_MT_VERNON AND HILLSIDE_160151_CADD\SHS\06_CIVIL\SW\16154-DP04.DWG




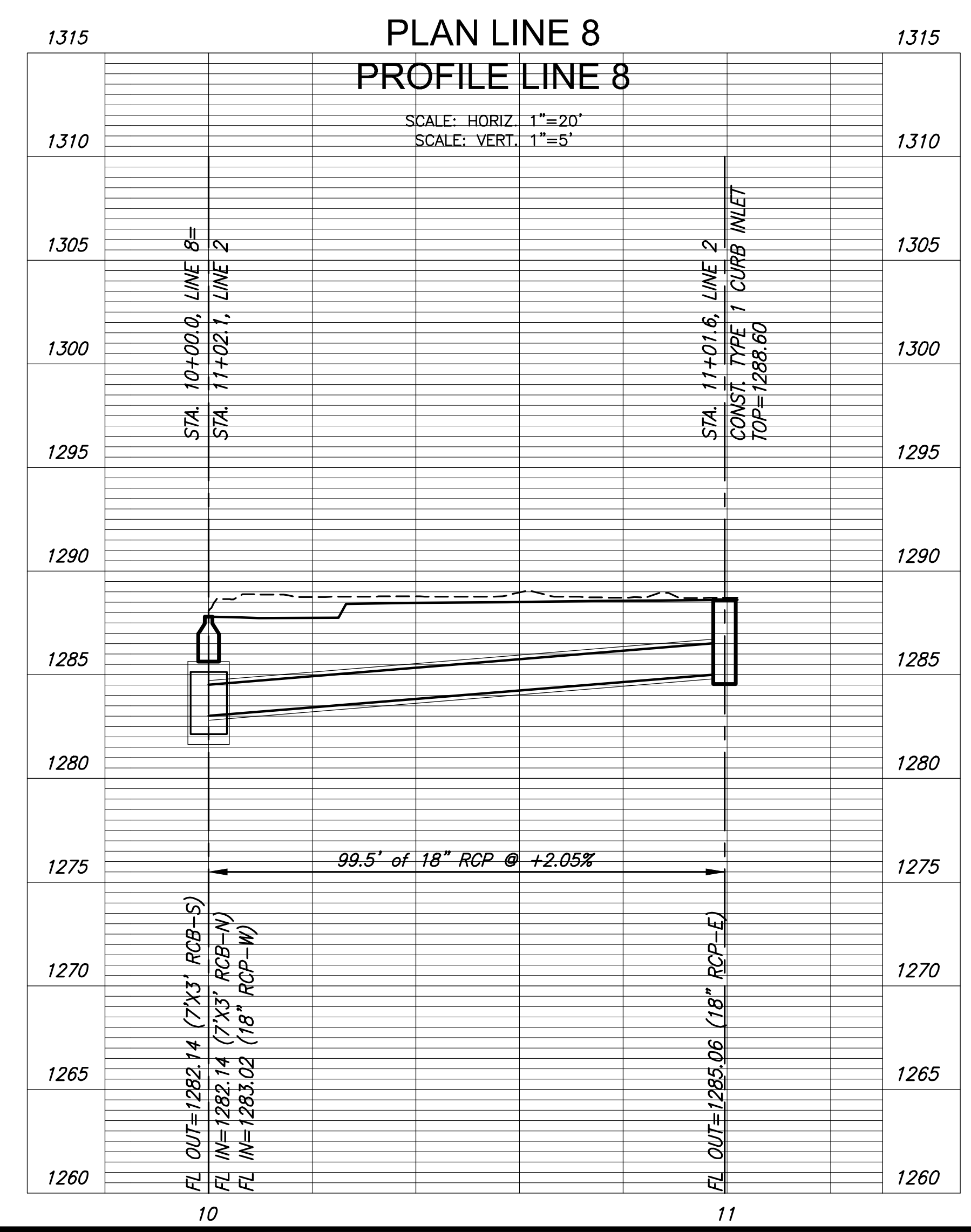
STA. 10+00.00, Line 8=
STA. 11+02.08, Line 2=
STA. 99+76.58, 24.65' LT.
SEE SH. NO. 14,16

STA. 10+99.54, LINE 8=
STA. 98+77.05, 24.50' LT.
CONST. TYPE 1 CURB INLET
L=10.0', W=3.0'
INLET TOP=1288.60
SEE SH. NO. 14,31



 TEMPORARY PAVEMENT PATCH, SEE SHEETS 41 & 52.

 PERMANENT PAVEMENT PATCH, SEE SHEETS 41 & 52.



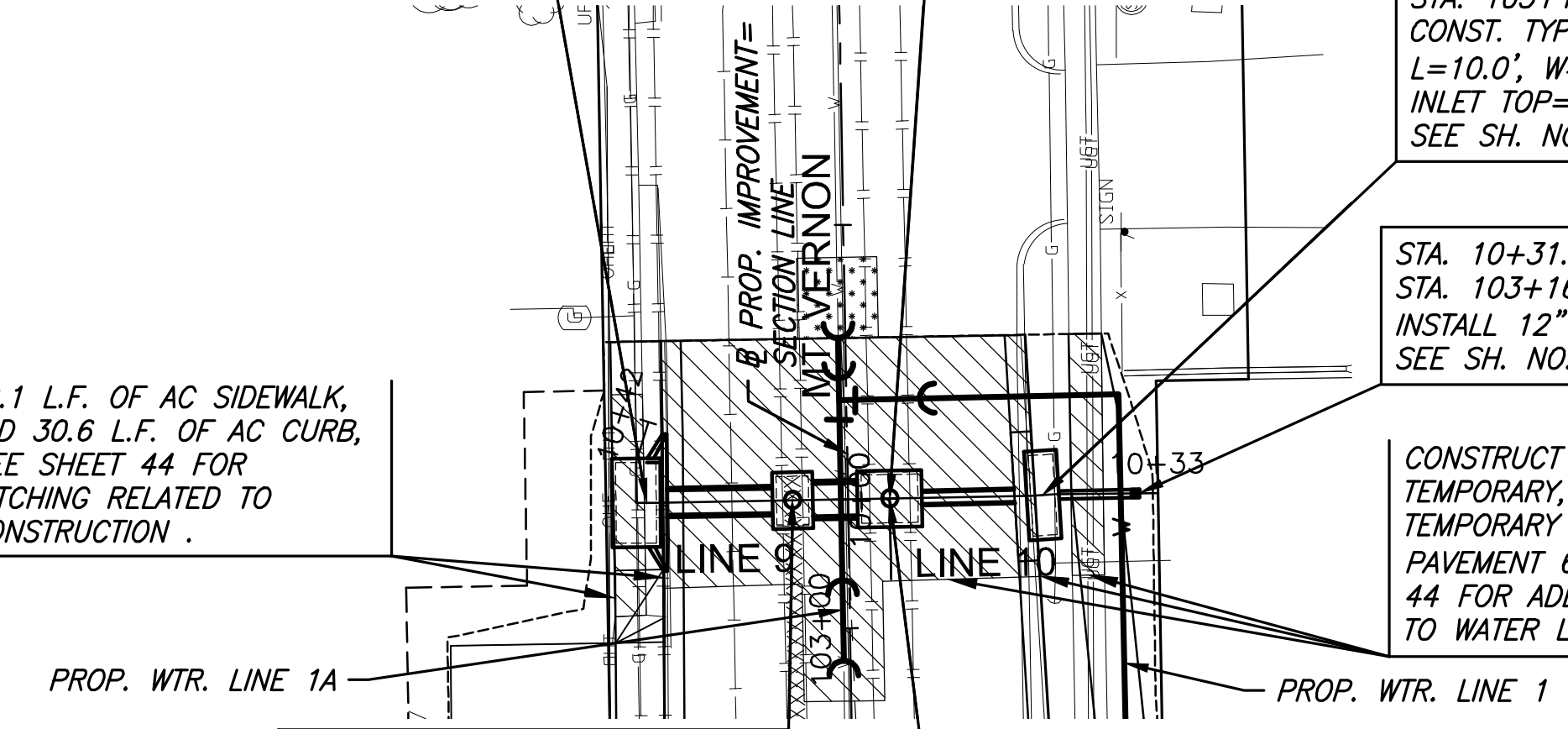
STA. 10+31.47, LINE 9=
STA. 103+16.02, 26.28' LT.
CONST. TYPE 1A (SPECIAL)
L=10.0', W=5.0'
INLET TOP=1288.87
CONNECT TO EXIST. 36" RCP (E)
SEE SH. NO. 14,33,41

Sta. 10+00.00, LINE 9=
Sta. 103+15.98, 5.19' RT.
CONST. MH, REINF. CONC.
L=6.0', W=7.0
MH TOP=1288.80 FLUSH WITH PAVEMENT. CONNECT TO EXIST. 60" RCP (W&E). SEE SPECIAL TOP DETAIL. SEE SH. NO. 14,37,39,41

STA. 10+19.01, LINE 10=
STA. 103+16.09, 24.20' RT.
CONST. TYPE 1 CURB INLET
L=10.0', W=3.0'
INLET TOP=1288.93
SEE SH. NO. 14,31

STA. 10+31.01, LINE 10=
STA. 103+16.09, 36.20' RT.
INSTALL 12" PVC CAP
SEE SH. NO. 14

CONSTRUCT 17.9 L.F. OF AC SIDEWALK, TEMPORARY, 30.0 L.F. AC CURB, TEMPORARY AND 41.7 L.F. AC PAVEMENT 6", TEMPORARY. SEE SHEET 44 FOR ADDITIONAL PATCHING RELATED TO WATER LINE CONSTRUCTION.



Sta. 10+12.06, LINE 9=
Sta. 103+15.98, 6.87' LT.
CONST. MH, REINF. CONC.
L=6.0, W=4.0
MH TOP=1288.76 FLUSH WITH PAVEMENT. CONNECT TO EXIST. 30" RCP (W). SEE SPECIAL TOP DETAIL. SEE SH. NO. 14,37,39,41

STA. 10+00.00, Line 10=
STA. 10+00.00, Line 9=
STA. 103+15.98, 5.19' RT.
SEE SH. NO. 14



CONSTRUCT 22.1 L.F. OF AC SIDEWALK, TEMPORARY AND 30.6 L.F. OF AC CURB, TEMPORARY. SEE SHEET 44 FOR ADDITIONAL PATCHING RELATED TO WATER LINE CONSTRUCTION.

