

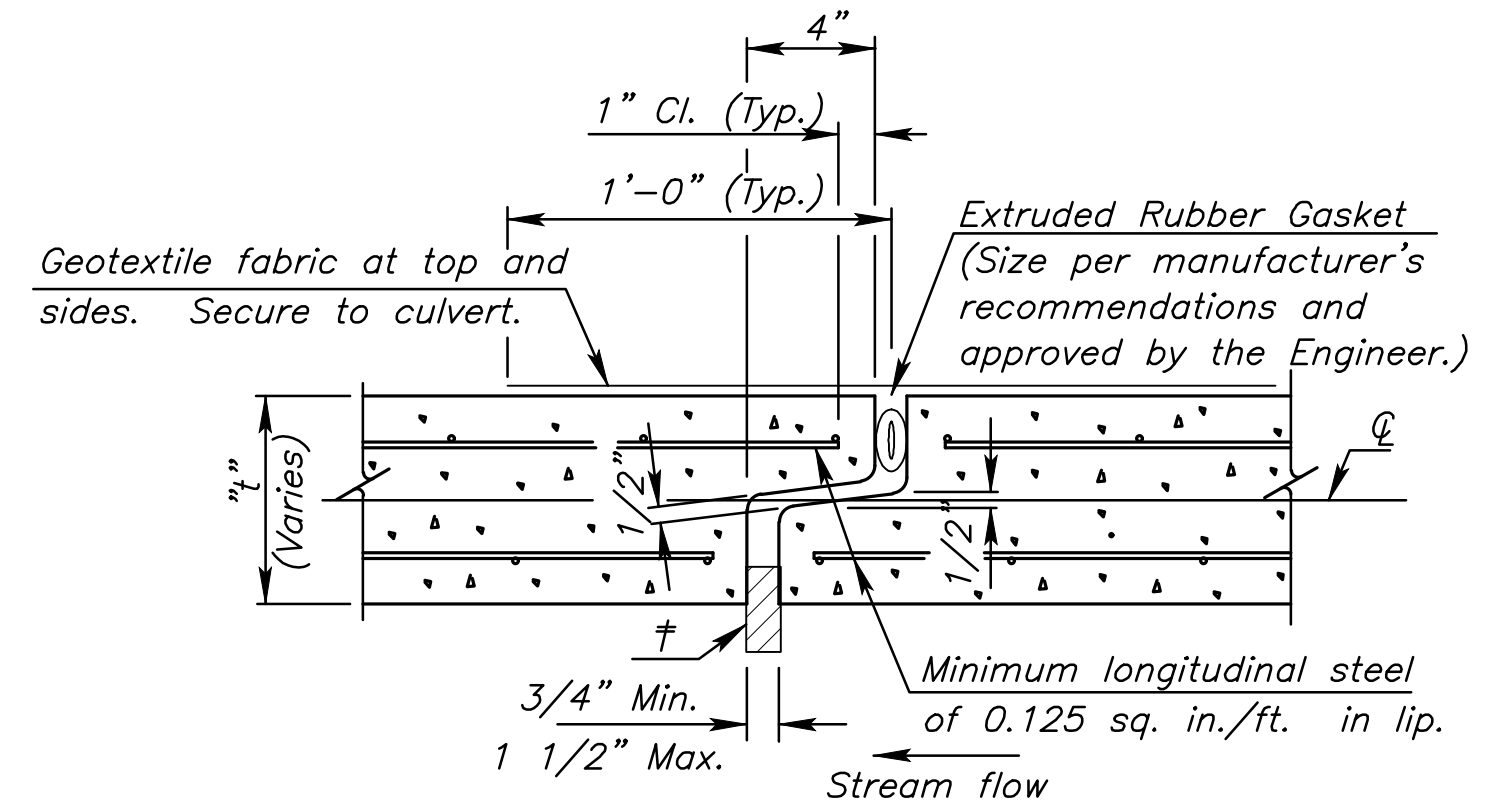
J:\PROJECTS\2016\1601010151_MT. VERNON AND HILLSIDE_160151_CADD\SHS\06 CIVIL\SWS\16154\2001.DWG
 PLOTTED: Tuesday, April 16, 2018 @ 03:59PM
 WICHITA, KS • 316-684-9600

**STREET IMPROVEMENTS FOR
 MT. VERNON & HILLSIDE INTERSECTION
 PAVING PLANS**

©2019 MKEC Engineering All Rights Reserved
 These drawings and their contents, including, but not limited to, all concepts, designs, & ideas are the exclusive property of MKEC Engineering (MKEC), and may not be used or reproduced in any way without the express consent of MKEC.

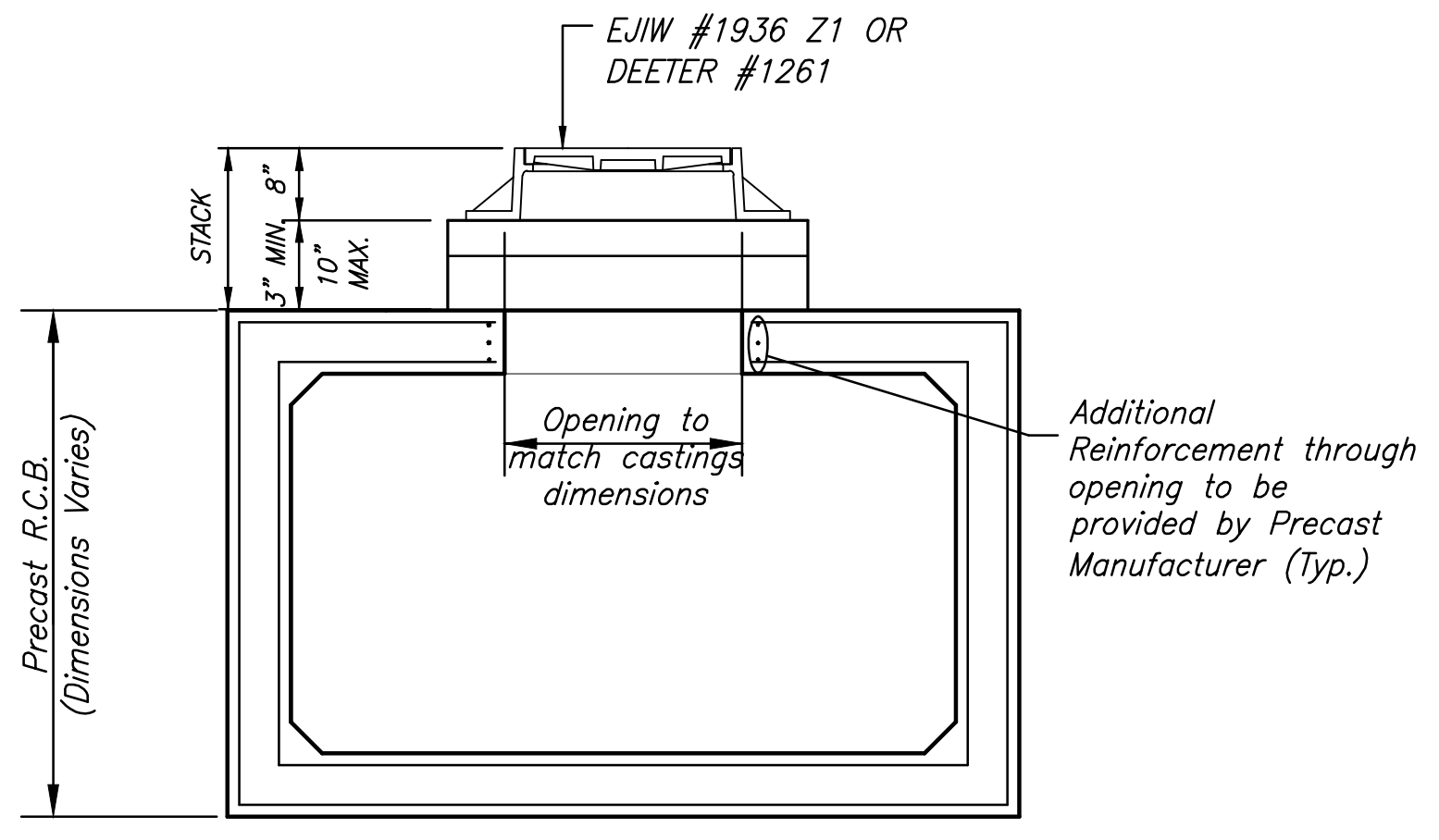
**MISCELLANEOUS
 STORM SEWER
 DETAILS**

PROJECT NO.	472-85286	
DATE	DATE	
SCALE	NTS	
DESIGNED	DRAWN	CHECKED
JRA	RAM	JRA
NO.	REVISION	DATE
SHEET NO.		

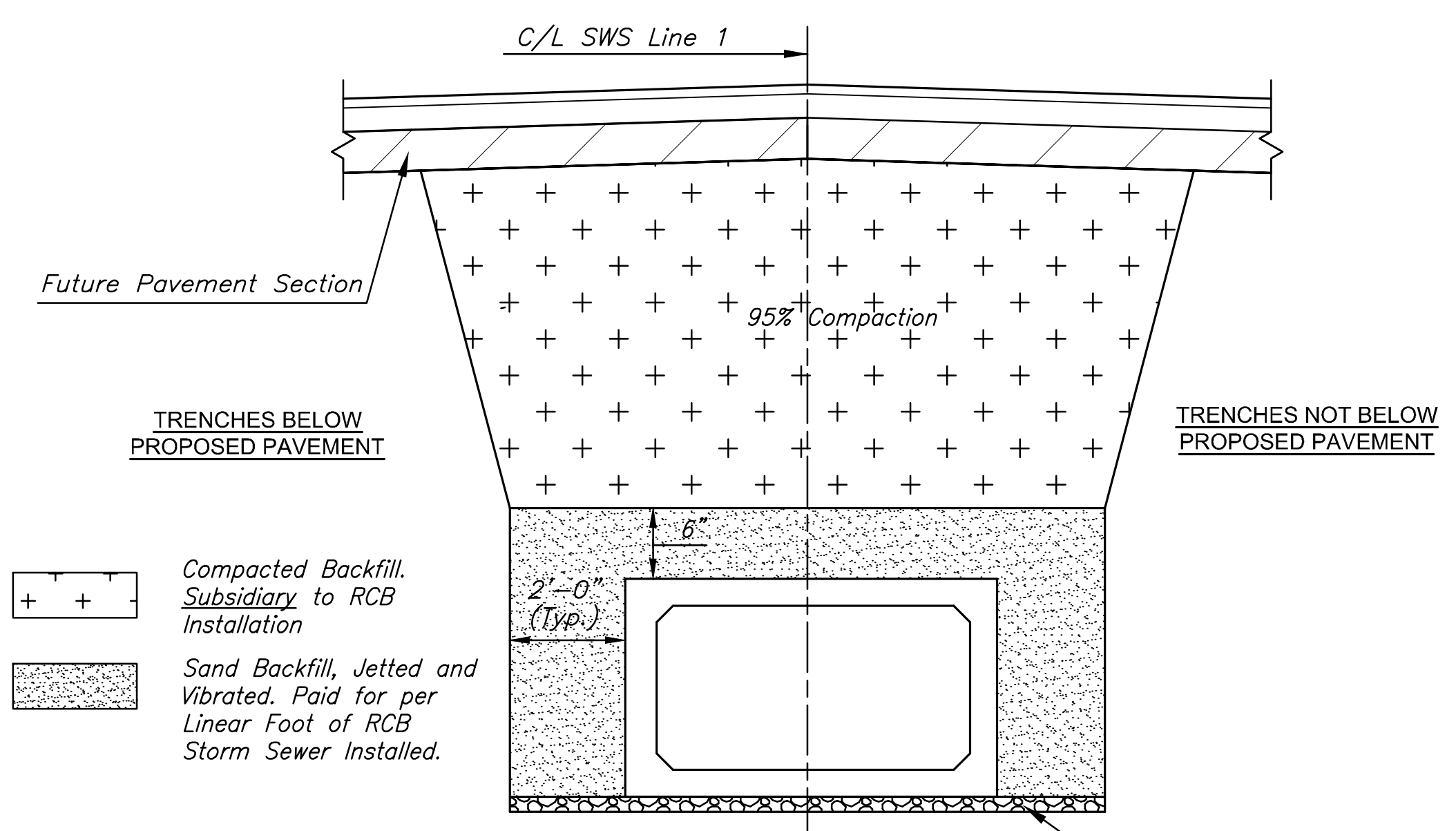


† Insert temporary, 3/4"-1" wide, hardwood wedges to prevent over-compressing gasket.

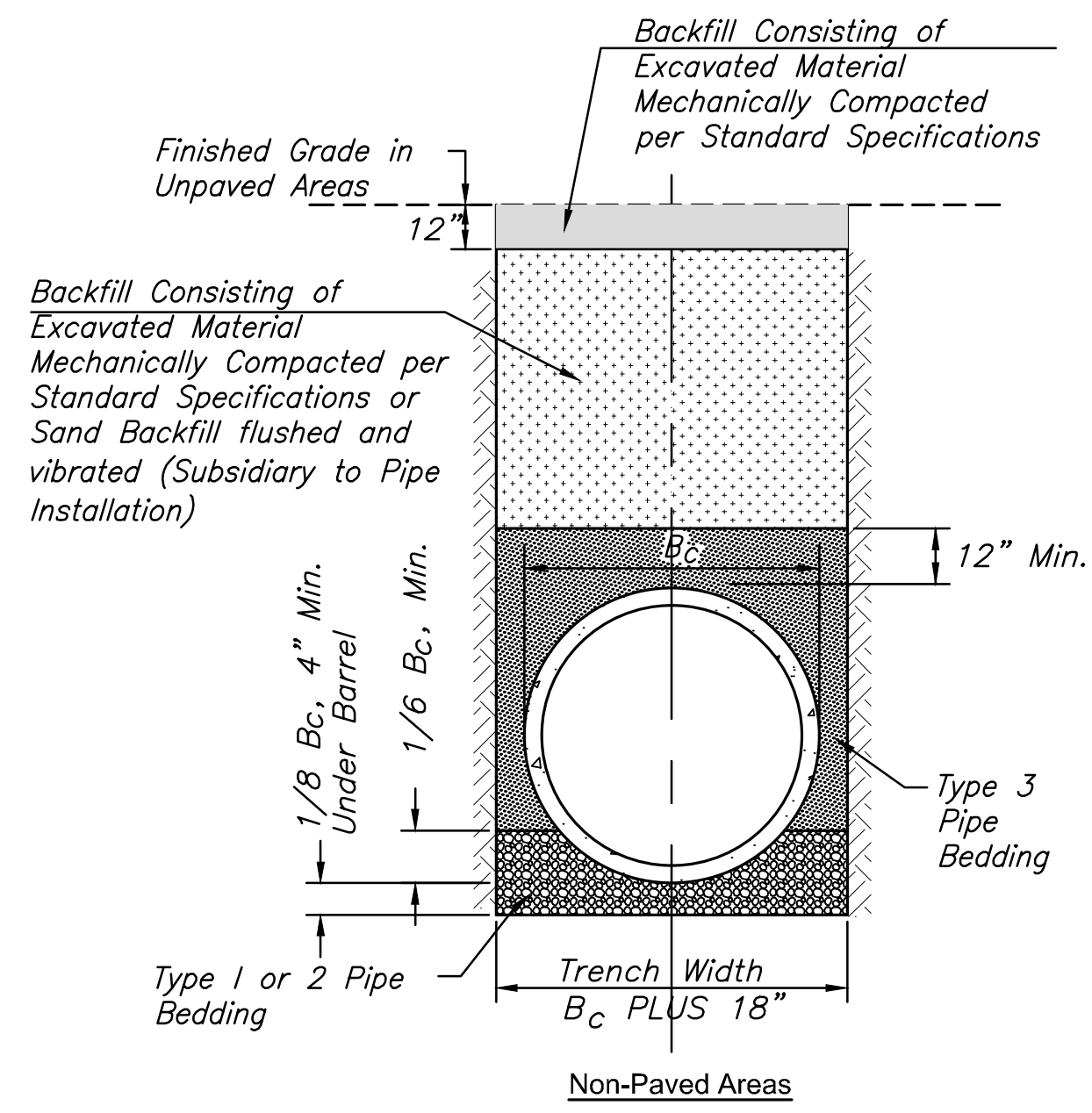
OPEN JOINT DETAIL



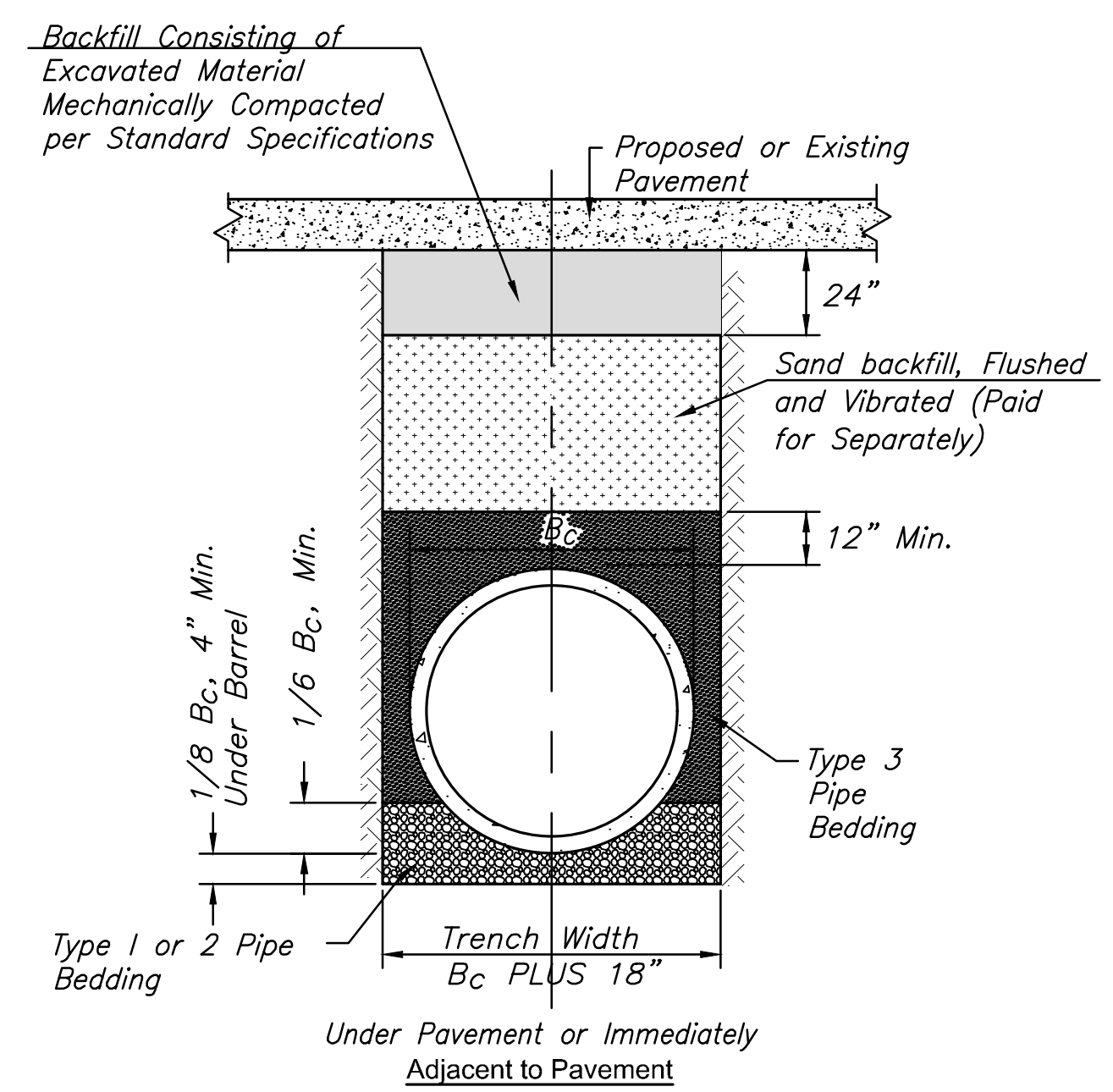
MANHOLE STACK DETAIL



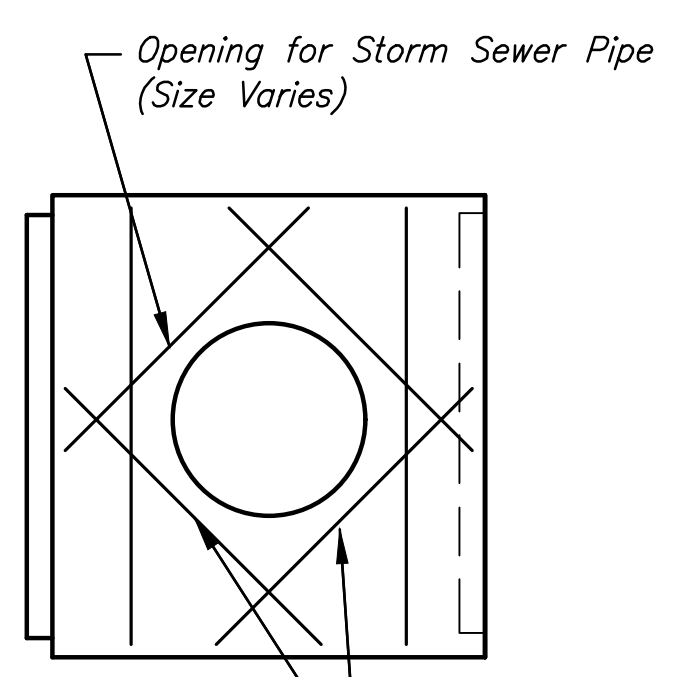
RCB STORM SEWER TRENCH TYPICAL SECTION



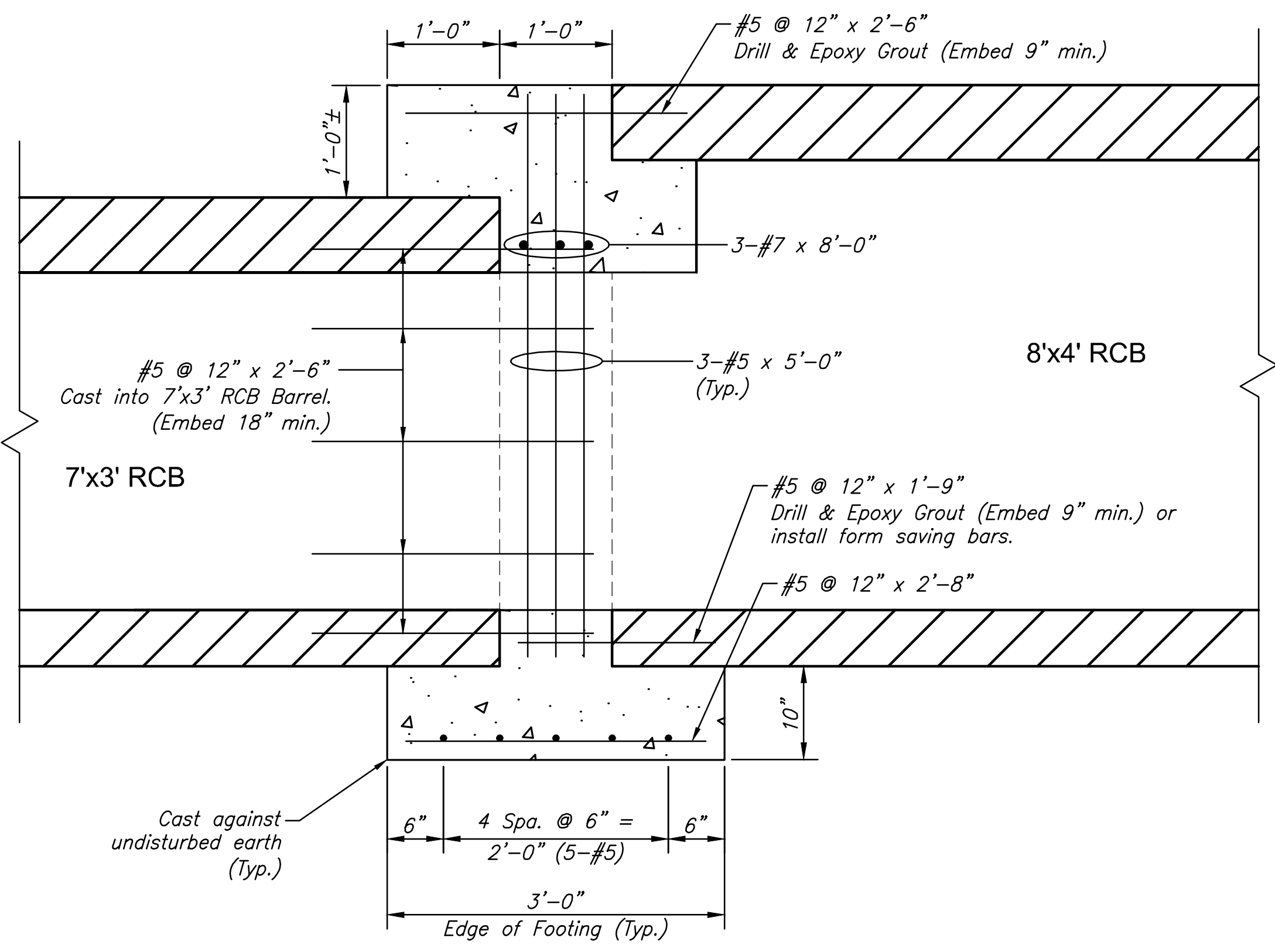
Non-Paved Areas



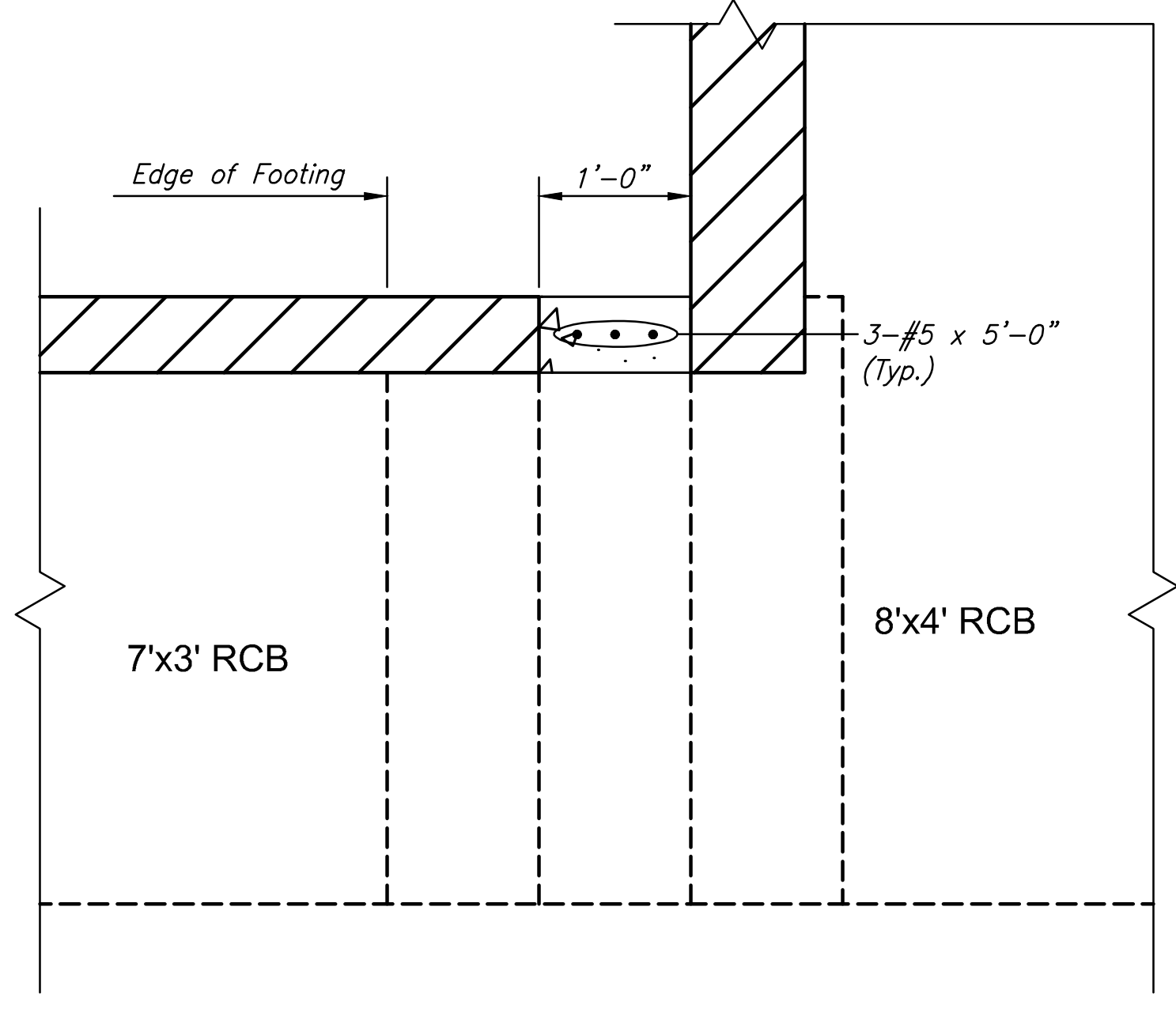
STORM SEWER TRENCH DETAILS



PIPE OPENING IN PRE-CAST RCB DETAIL



TYPICAL SECTION @ 7'x3' RCB BARREL



SECTION @ WALL MID-HEIGHT

CONNECTION BETWEEN SWS LINE 1 AND SWS LINE 2

CONNECTION NOTES

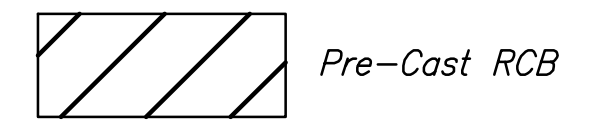
8'x4' RCB shall have appropriate sections cast with blackout to receive the 7'x3' RCB as shown.

All work associated with connecting SWS Line 2 to SWS Line 1 is Subsidiary to the cost of "Pipe, SWS, RCBC (7'x3)".

All contact concrete surfaces to be brush blast, cleaned, power washed, and water soaked prior to casting.

UNIT STRESSES:

Concrete (Grade 4.0): $f'c = 4$ k.s.i.
 Reinforcing Steel (Grade 60): $f_y = 60$ k.s.i.



Pre-Cast RCB