

PAVING AND SANITARY SEWER PROJECT

# 20th STREET NORTH

FROM HYDRAULIC TO PIATT

PAVING PROJECT NO. 472 83651 (765760)

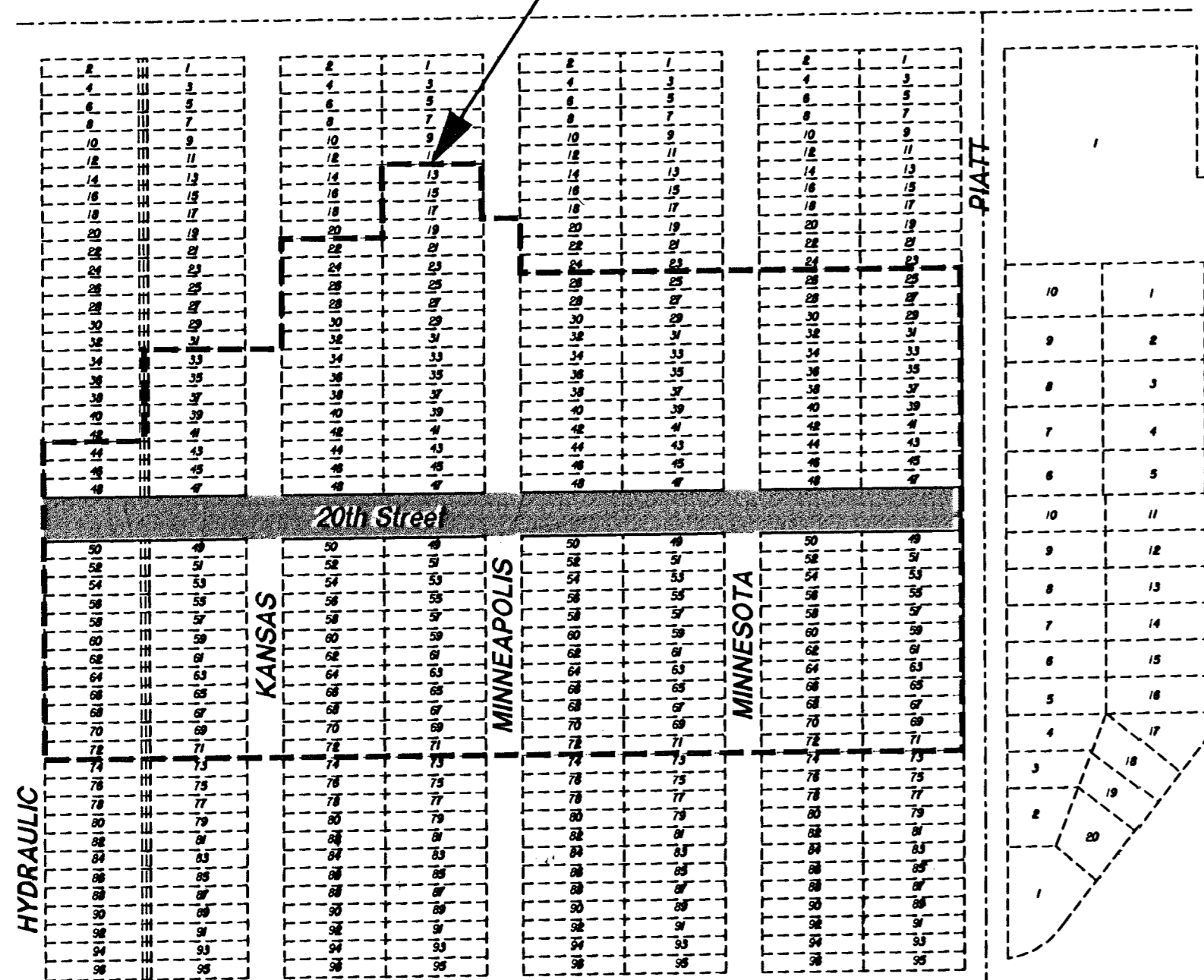
SANITARY SEWER PROJECT NO. 468 83615 (620374)

## ROADWAY IMPROVEMENTS

### Legend

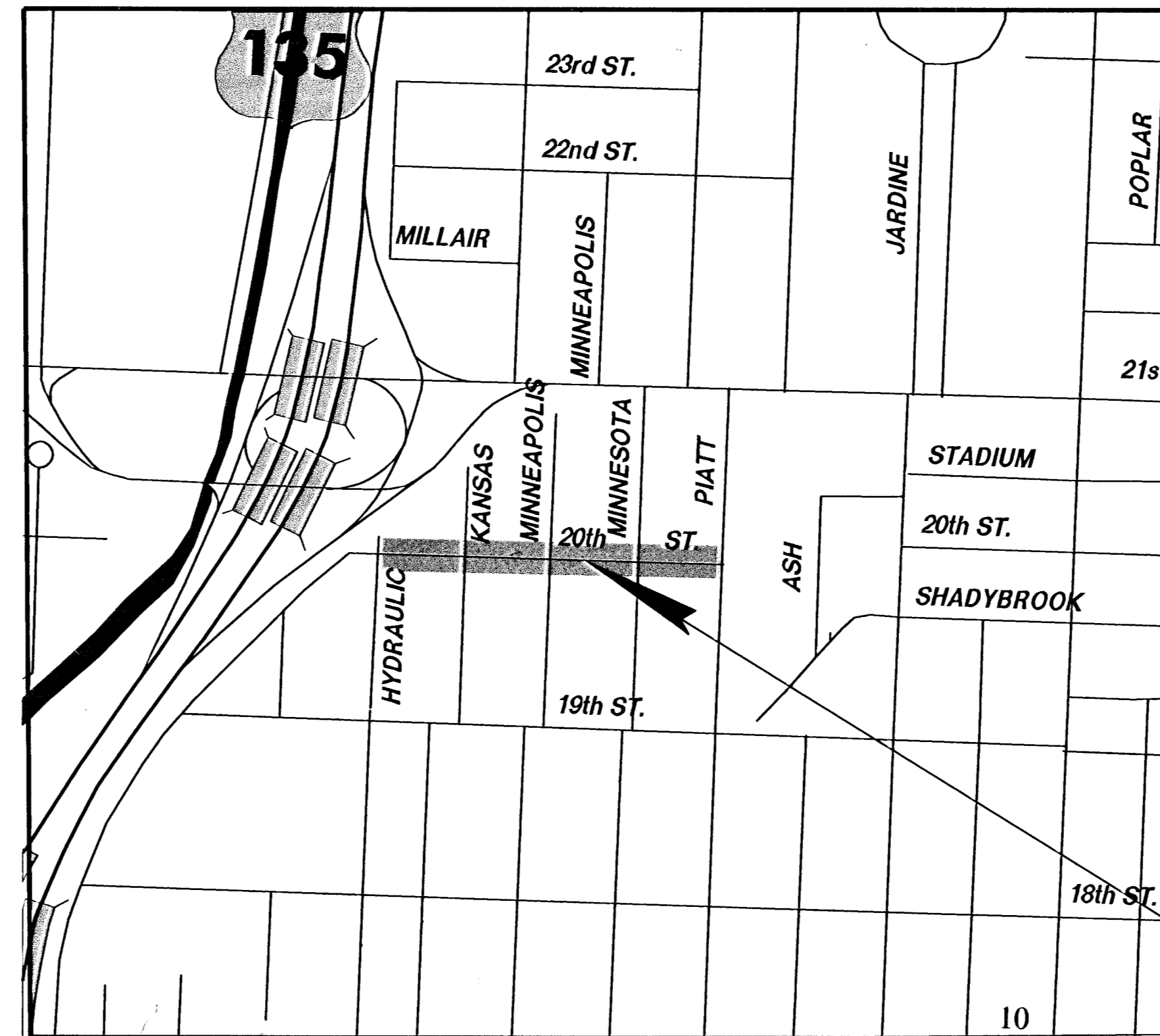
- Existing Water Line
- Electric Line
- Gas Line
- Telephone Line
- Cable TV Line
- Center Line
- Existing Right-of-Way
- Power Pole
- E.M. Electric Meter
- Luminaire
- ☼ Yard Light
- ☐ Pull Box
- ☒ Signal Control Box
- M.A. Mast Arm
- P.M.S. Pedestal Mounted Signal
- T.M.H. Telephone Manhole
- ☐ Telephone Pedestal
- ☐ PHONE Telephone
- ☐ Cable Television Box
- ▶ W.V. Water Valve
- W.M. Water Meter
- ☼ Fire Hydrant
- S.H. Sprinkler Head
- ▶ I.C.V. Irrigation Control Valve
- A.R. Air Release
- G.M.S. Gas Monitoring Station
- G.M. Gas Meter
- G.T.S. Gas Testing Station
- G.F.C. Gas Filler Cap
- S.S.M.H. Sanitary Sewer Manhole

Improvement District (472-83651)



Improvement District (472-83481) - - - - -

### PROJECT AREA



Project Location

### Index

Cover Sheet	1.
General Notes	2.
Typical Sections	3.
Plan Sheets	4.-7.
Driveway Detail	8.
Valley Gutter Detail	9.
Wheelchair Ramp Details	10.-11.
Manhole Adjustment Detail	12.
Type B Manhole Detail	13.
Summary Of Quantities	14.
Cross Sections	15.-25.

PREPARED BY  
**TRANSYSTEMS CORPORATION**

245 North Waco Suite 420  
Wichita, Kansas



### Vicinity Map

CITY OF WICHITA, KANSAS

James L. Armour, P.E. City Engineer

FEBRUARY, 2004