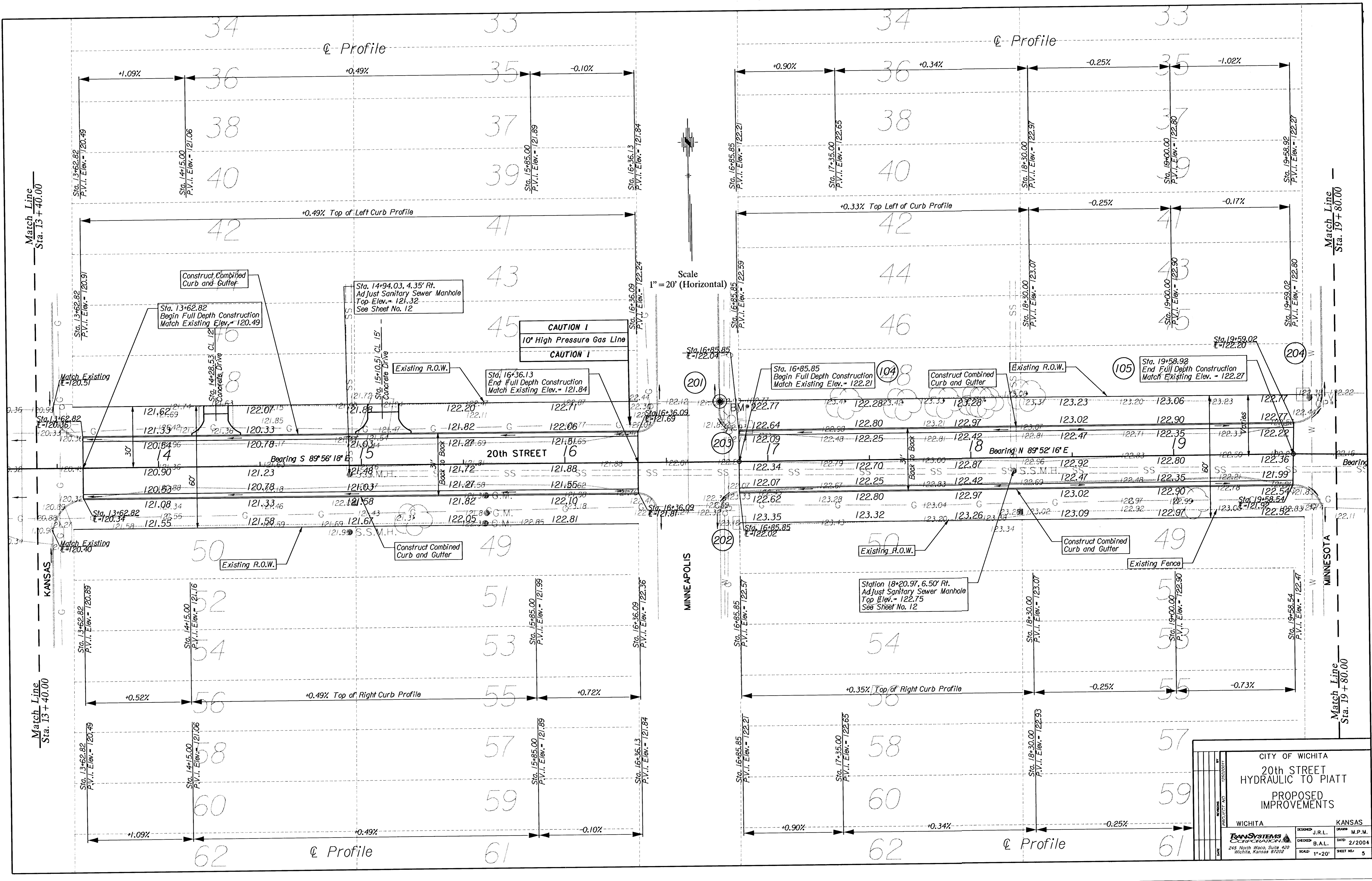


6:10032 (001) Revd 1/2002-JAH



CITY OF WICHITA			
20th STREET			
HYDRAULIC TO PIATT			
PROPOSED IMPROVEMENTS			
WICHITA	KANSAS	DESIGNED J.R.L.	DRAWN M.P.M.
245 North Waco, Suite 420	Wichita, Kansas 67202	CHECKED B.A.L.	DATE 2/2004
SCALE 1"=20'		SHEET NO. 5	