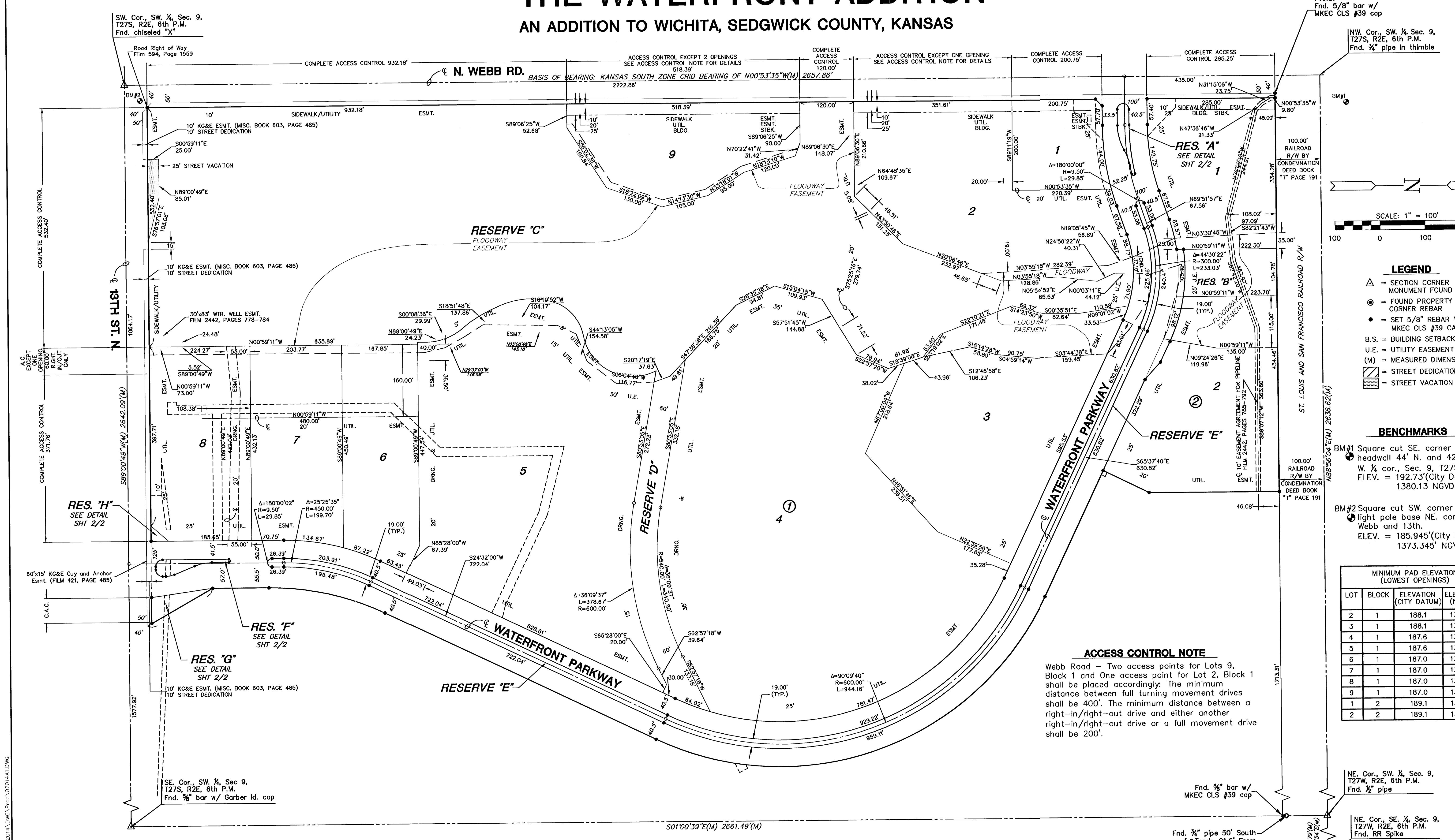


# FINAL PLAT

## THE WATERFRONT ADDITION

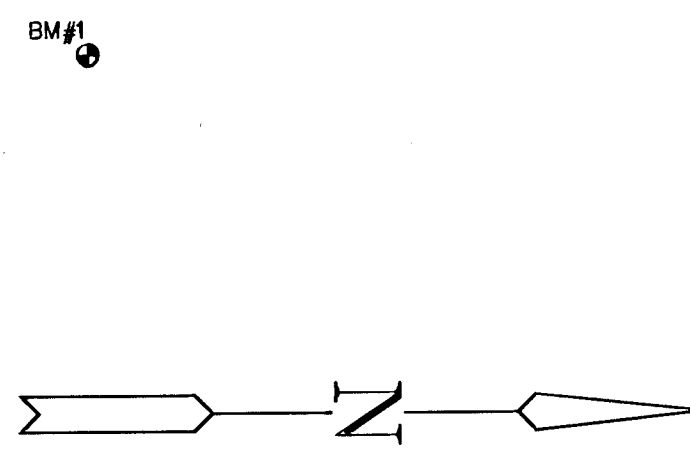
### AN ADDITION TO WICHITA, SEDGWICK COUNTY, KANSAS



SW. Cor., SW 1/4, Sec. 9,  
T27S, R2E, 6th P.M.  
Fnd. chiseled "X"

P.O.B.  
Fnd. 5/8" bar w/  
MKEC CLS #39 cap

NW. Cor., SW 1/4, Sec. 9,  
T27S, R2E, 6th P.M.  
Fnd. 1/2" pipe in thimble



- LEGEND**
- △ = SECTION CORNER MONUMENT FOUND
  - ⊙ = FOUND PROPERTY CORNER REBAR
  - = SET 5/8" REBAR W/ MKEC CLS #39 CAP
  - B.S. = BUILDING SETBACK
  - U.E. = UTILITY EASEMENT
  - (M) = MEASURED DIMENSION
  - ▨ = STREET DEDICATION
  - ▩ = STREET VACATION

- BENCHMARKS**
- BM#1 Square cut SE. corner headwall 44' N. and 42' E. of W. 1/4 cor., Sec. 9, T27S, R2E ELEV. = 192.73'(City Datum) 1380.13 NGVD
  - BM#2 Square cut SW. corner signal light pole base NE. corner Webb and 13th. ELEV. = 185.945'(City Datum) 1373.345' NGVD

MINIMUM PAD ELEVATIONS (LOWEST OPENINGS)			
LOT	BLOCK	ELEVATION (CITY DATUM)	ELEVATION (NGVD)
2	1	188.1	1375.5
3	1	188.1	1375.5
4	1	187.6	1375.0
5	1	187.6	1375.0
6	1	187.0	1374.4
7	1	187.0	1374.4
8	1	187.0	1374.4
9	1	187.0	1374.4
1	2	189.1	1376.5
2	2	189.1	1376.5

**ACCESS CONTROL NOTE**

Webb Road - Two access points for Lots 9, Block 1 and One access point for Lot 2, Block 1 shall be placed accordingly. The minimum distance between full turning movement drives shall be 400'. The minimum distance between a right-in/right-out drive and either another right-in/right-out drive or a full movement drive shall be 200'.

SE. Cor., SW 1/4, Sec. 9,  
T27S, R2E, 6th P.M.  
Fnd. 3/8" bar w/ Garber Id. cap

Fnd. 3/8" bar w/  
MKEC CLS #39 cap

NE. Cor., SW 1/4, Sec. 9,  
T27W, R2E, 6th P.M.  
Fnd. 1/2" pipe

NE. Cor., SE 1/4, Sec. 9,  
T27W, R2E, 6th P.M.  
Fnd. RR Spike