



© 2018 GARVER, LLC
 THIS DOCUMENT, ALONG WITH THE IDEAS AND DESIGNS CONVEYED HEREIN, SHALL BE CONSIDERED INSTRUMENTS OF PROFESSIONAL SERVICE AND ARE PROPERTY OF GARVER, LLC. ANY USE, REPRODUCTION, OR DISTRIBUTION OF THIS DOCUMENT, ALONG WITH THE IDEAS AND DESIGN CONTAINED HEREIN, IS PROHIBITED UNLESS AUTHORIZED IN WRITING BY GARVER, LLC OR EXPLICITLY ALLOWED IN THE GOVERNING PROFESSIONAL SERVICES AGREEMENT FOR THIS WORK.



Digitally Signed 04/11/2019

REV.	DATE	DESCRIPTION	BY
1	4-10-19	Added address & owner info	MTD



CITY OF WICHITA
 WICHITA, KANSAS
 LINCOLN STREET
 WATER AND
 SANITARY SEWER

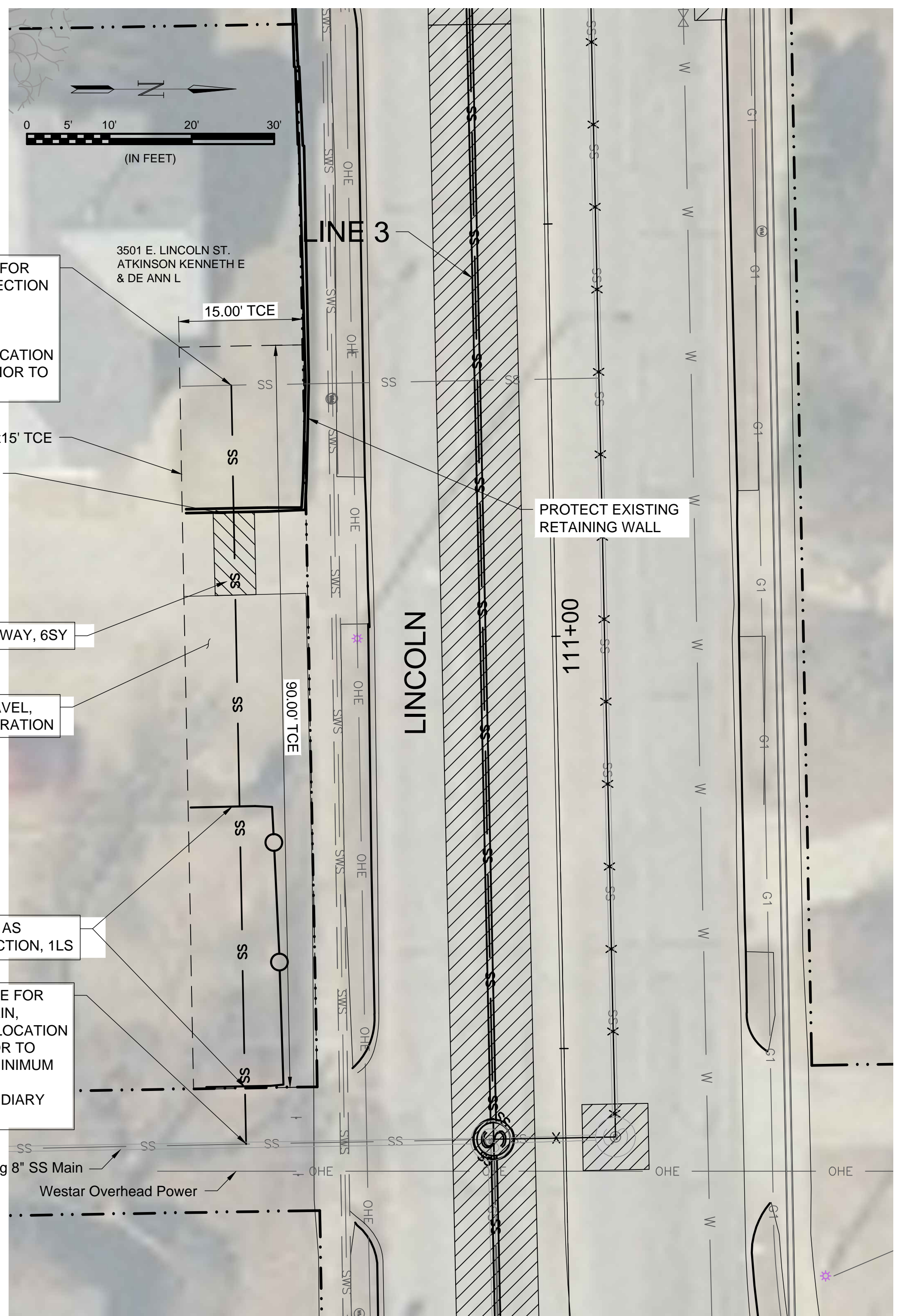
Sanitary Sewer
 Line 3A

JOB NO.: 18267014
 DATE: JAN. 2019
 DESIGNED BY: MTD
 DRAWN BY: DRS

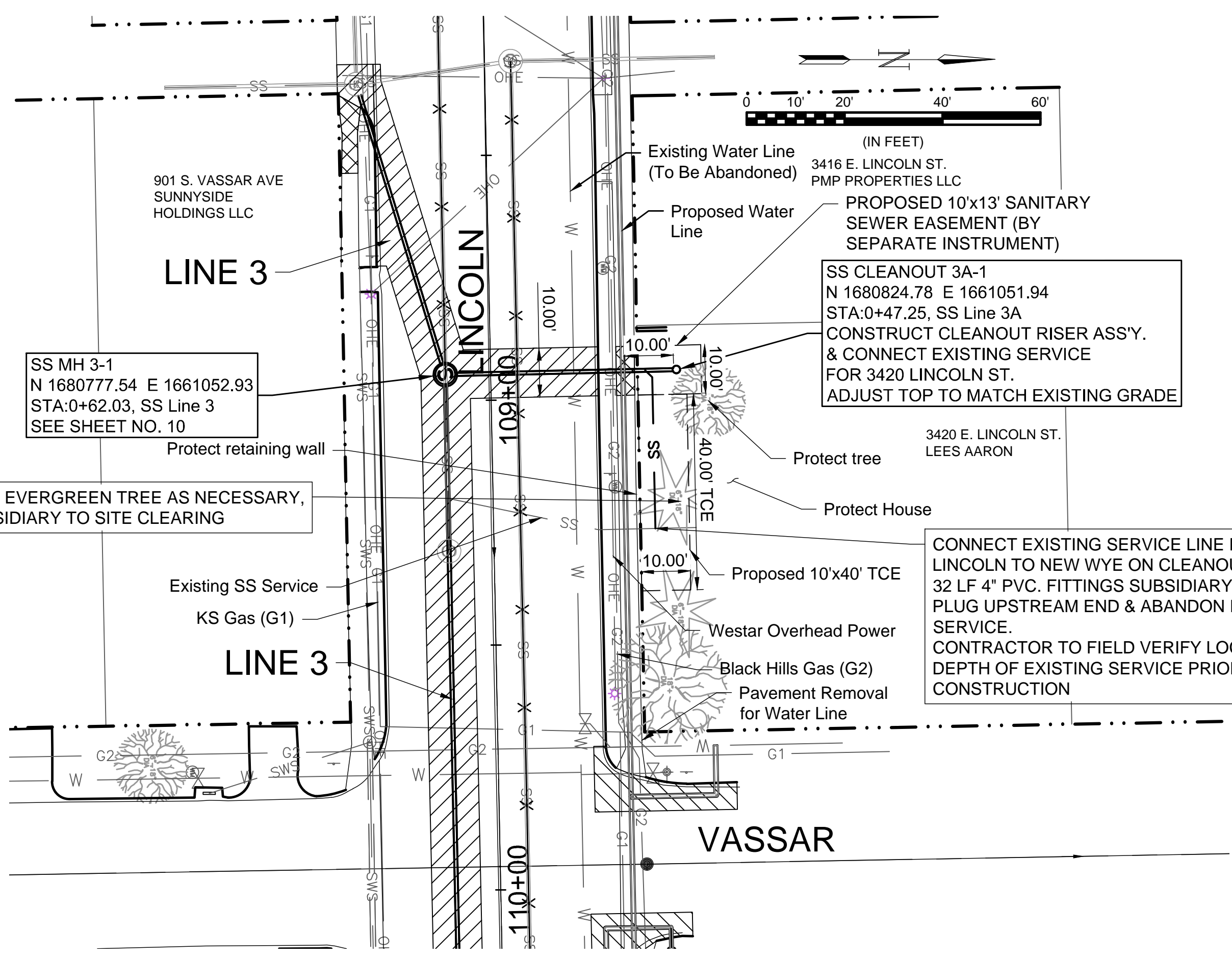
BAR IS ONE INCH ON ORIGINAL DRAWING
 IF NOT ONE INCH ON THIS SHEET, ADJUST SCALES ACCORDINGLY.

DRAWING NUMBER

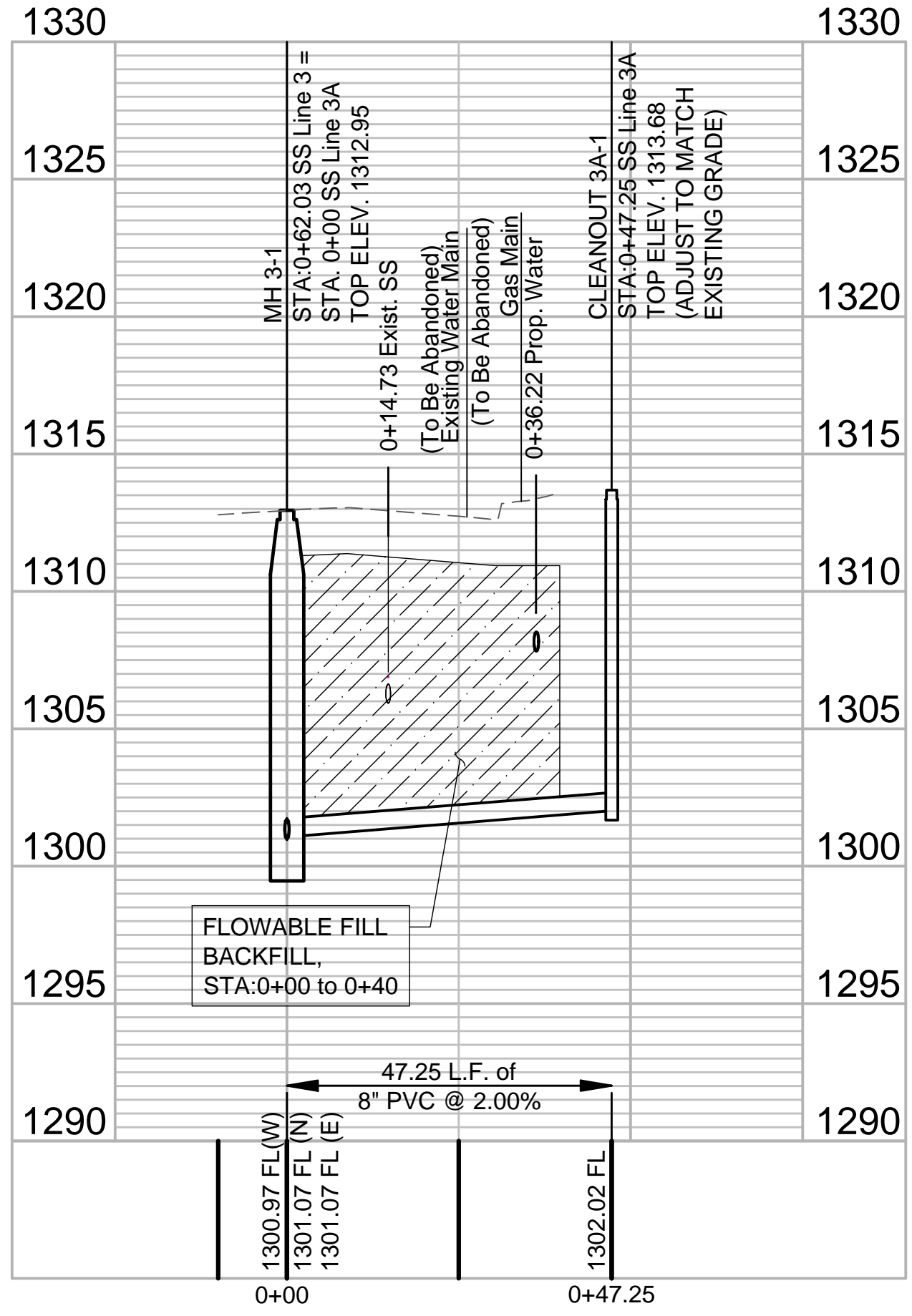
SHEET NUMBER **10** OF **22**



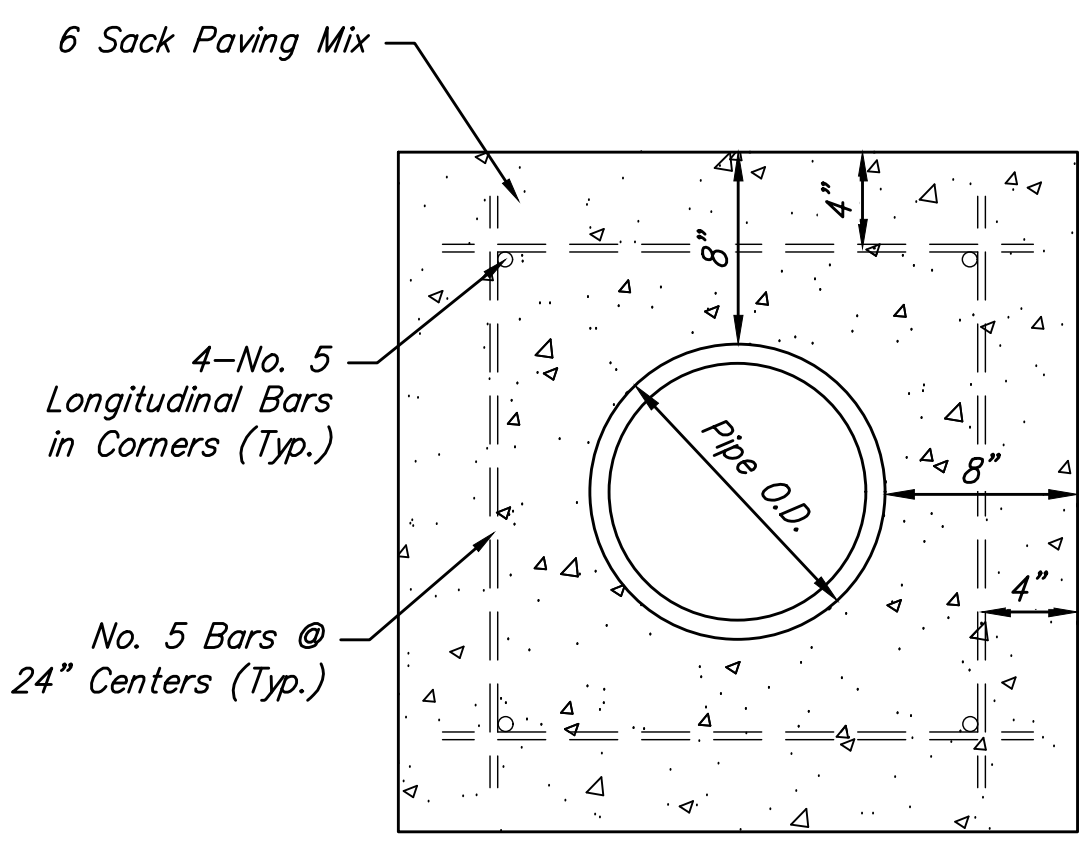
3501 LINCOLN SERVICE LINE



SS LINE 3A



- 8" CONCRETE PAVEMENT REMOVE & REPLACE w/ MONOLITHIC CURB
- SIDEWALK REMOVE & REPLACE
- 6" CONCRETE DRIVEWAY REMOVE & REPLACE



CONCRETE ENCASEMENT DETAIL

File: L:\2018\18267014 - Lincoln Street Water and SS WichitaDrawings\C3D\SS-3.dwg, Last Save: 4/11/2019 8:58 AM, Last saved by: MTDolechek
 Last plotted by: Dolechek, Mark T., Plot Style: ---, Plot Date: 4/11/2019 9:01 AM, Plotter used: None