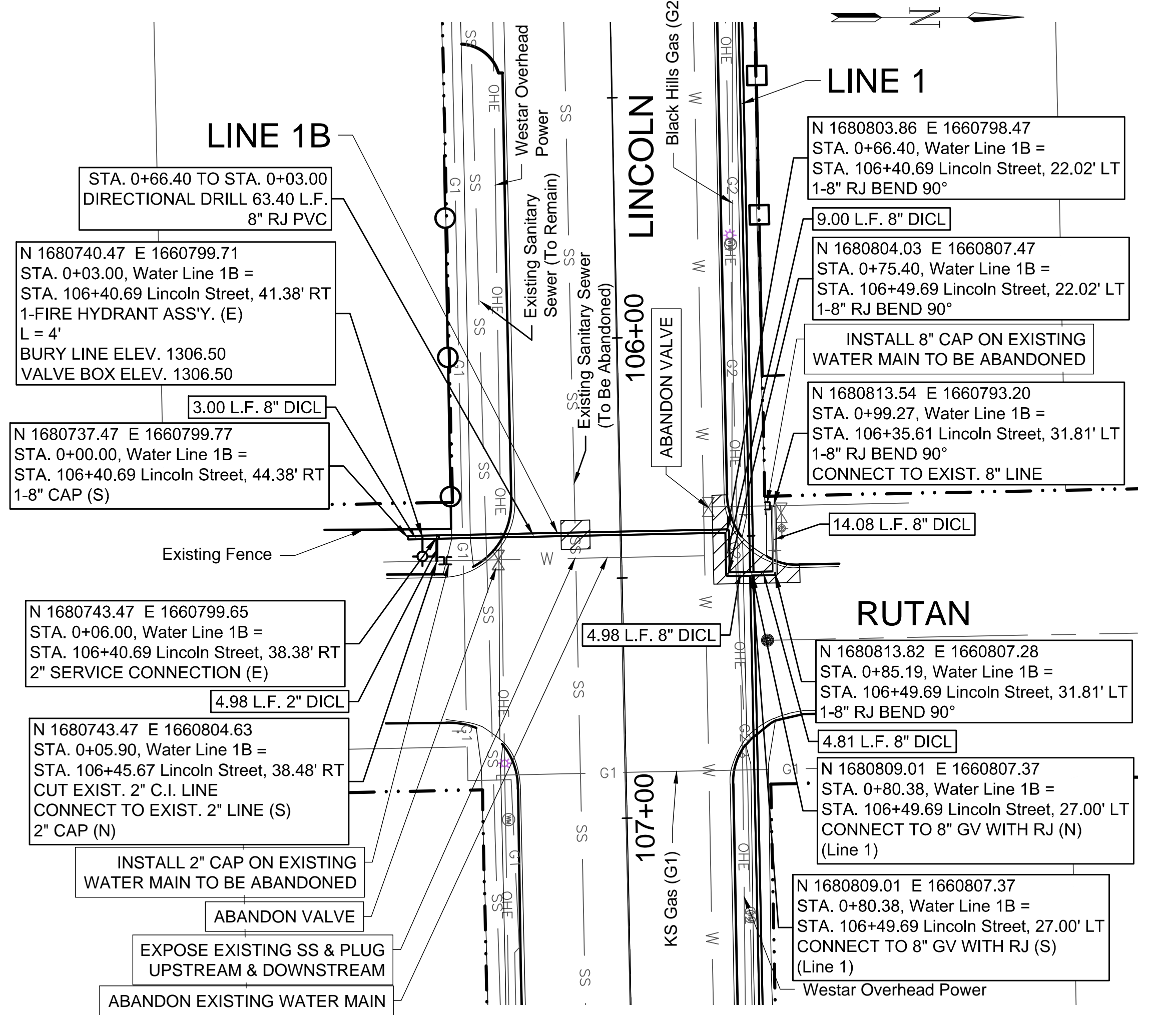
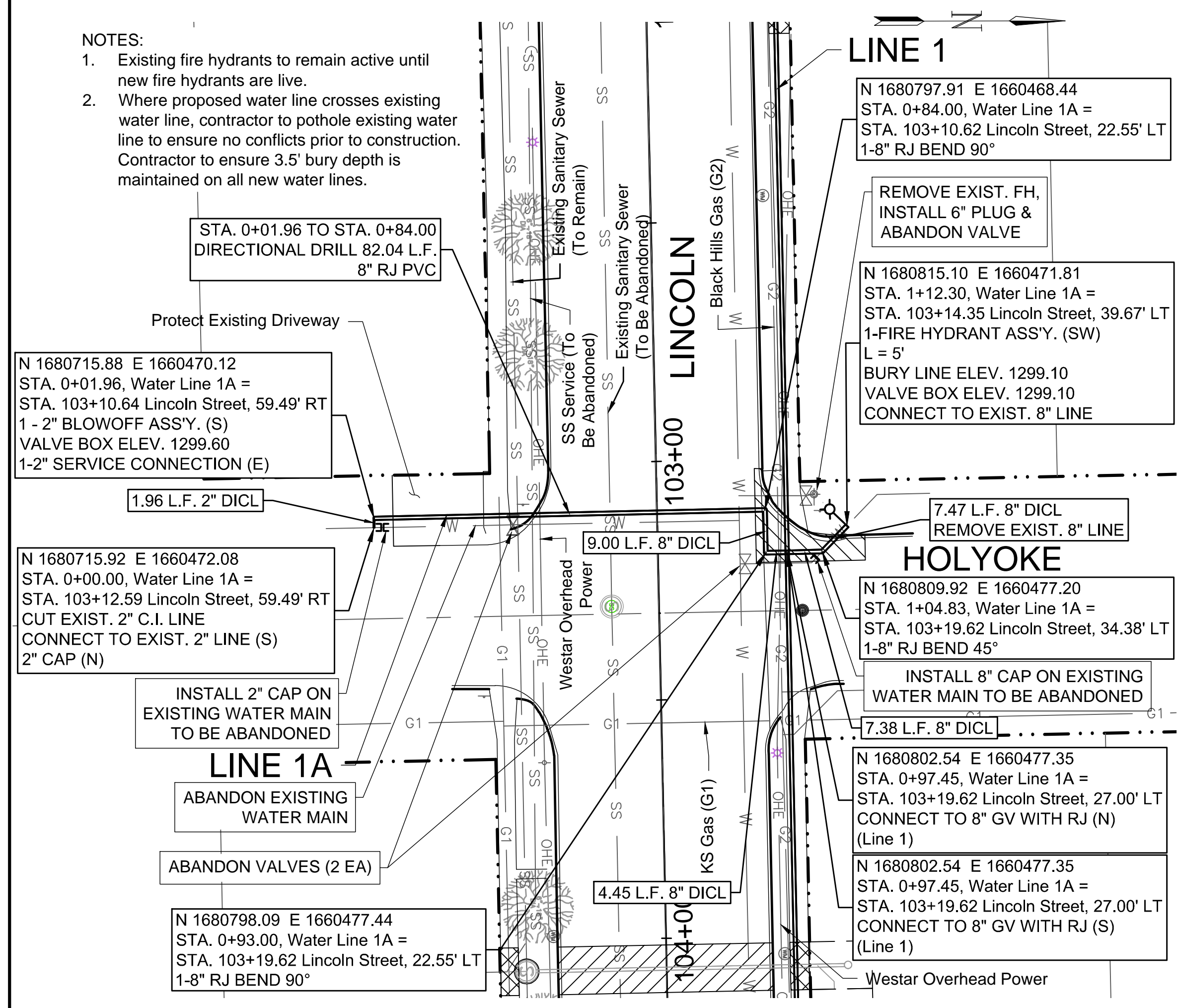


- NOTES:
- Existing fire hydrants to remain active until new fire hydrants are live.
 - Where proposed water line crosses existing water line, contractor to pothole existing water line to ensure no conflicts prior to construction. Contractor to ensure 3.5' bury depth is maintained on all new water lines.



- 8" CONCRETE PAVEMENT REMOVE & REPLACE w/ MONOLITHIC CURB
- SIDEWALK REMOVE & REPLACE
- 6" CONCRETE DRIVEWAY REMOVE & REPLACE

FOR PROPERTY ADDRESS & OWNER INFORMATION SEE SHEETS 11 & 12



© 2018 GARVER, LLC
 THIS DOCUMENT, ALONG WITH THE IDEAS AND DESIGNS CONVEYED HEREIN, SHALL BE CONSIDERED INSTRUMENTS OF PROFESSIONAL SERVICE AND ARE PROPERTY OF GARVER, LLC. ANY USE, REPRODUCTION, OR DISTRIBUTION OF THIS DOCUMENT, ALONG WITH THE IDEAS AND DESIGN CONTAINED HEREIN, IS PROHIBITED UNLESS AUTHORIZED IN WRITING BY GARVER, LLC OR EXPLICITLY ALLOWED IN THE GOVERNING PROFESSIONAL SERVICES AGREEMENT FOR THIS WORK.

25299
 Mark T. Dolechek
 LICENSED PROFESSIONAL ENGINEER
 KANSAS
 Digitally Signed 04/11/2019

REV.	DATE	DESCRIPTION	BY
1	4-10-19	Added address & owner info	MTD



CITY OF WICHITA
 WICHITA, KANSAS

LINCOLN STREET
 WATER AND
 SANITARY SEWER

Water Line
 1A-1B

JOB NO.: 18267014
 DATE: JAN. 2019
 DESIGNED BY: MTD
 DRAWN BY: DRS

BAR IS ONE INCH ON ORIGINAL DRAWING
 IF NOT ONE INCH ON THIS SHEET, ADJUST SCALES ACCORDINGLY.

DRAWING NUMBER

SHEET NUMBER 14 OF 22

File: L:\2018\18267014 - Lincoln Street Water and SS Wichita\Drawings\C3D\Water Line 1A.dwg, Last Save: 4/11/2019 8:43 AM, Last saved by: MTDolechek
 Last plotted by: Dolechek, Mark T., Plot Style: ..., Plot Date: 4/11/2019 9:02 AM, Plotter used: None

