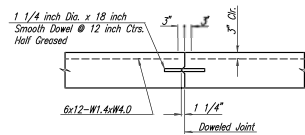
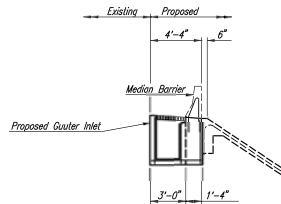
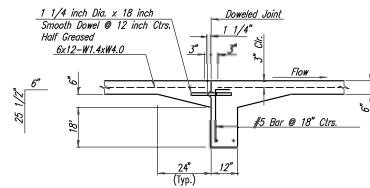


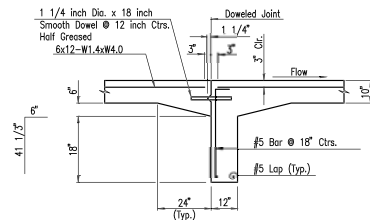
Sheet 4 of 27 (11 of 26) of 19 by BJS
 Date: 11-15-2019 1:33:04 PM by BJS
 Drawing: 197042-001-CP301-TYPICAL SECTION AND DETAILS



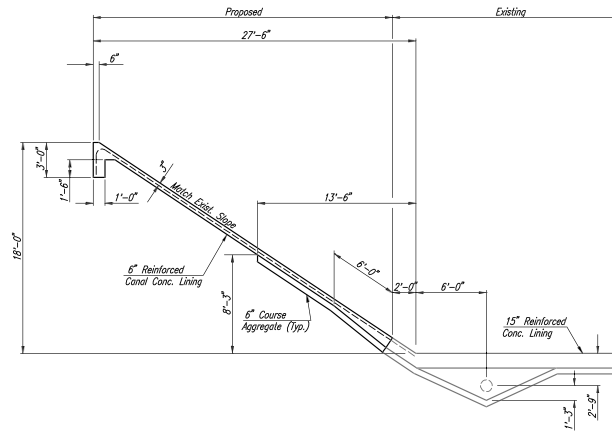
CONTRACTION JOINT DETAIL



TRANSVERSE CONSTRUCTION JOINT DETAIL SIDE SLOPES



TRANSVERSE CONSTRUCTION JOINT DETAIL BOTTOM SLAB



TYPICAL HALF-SECTION CANAL LINING

Note:
 Concrete Riprap shall be Grade 25 (A.E.). Wire Reinforcing Mesh shall be of the Electrically Welded Mesh Type and shall be Composed of W1.4 Steel Wire spaced at 6 inch Centers and W4.0 Steel Wire spaced at 12 inch Centers. Approximate Weight - 2.56 Lbs Per Sq. Ft..

Measurement of "Canal Concrete Lining" shall be in Sq. Ft. and shall be the Outside Surface Area, including the Toe walls, regardless of the Thickness shown on the Plans.

When a Pier, Culvert, Headwall, or any other obstruction falls within the Riprapped Surface, 1.5 inches Joint Material Type B will be used around the obstruction. Type B Joint Material will be Subsidiary to the "Canal Concrete Lining" bid item.

The Course Aggregate placed to the limits shown in the Details shall be considered Subsidiary to the "Canal Concrete Lining" bid item. Course Aggregate around underdrain pipe shall be UD-1, with subgrade material being crushed rock.

CANAL CONCRETE LINING DETAILS



**I-135 DRAINAGE CANAL
 REPAIRS-PHASE 1**

CITY OF WICHITA, KS

Issue	For Review	Date
1	SENT FOR REVIEW	4/16/19
2	SENT FOR REVIEW-KDOT	4/28/19
3	SENT FOR FINAL	5/01/19

JOB NO.	197042-001
DATE	MAY 2019
PI	BMM
DESIGNED BY	RJS
DRAWN BY	BJS
CHECKED BY	AKL

TYPICAL SECTION AND
 DETAILS

CP301
 CP301 OF 19