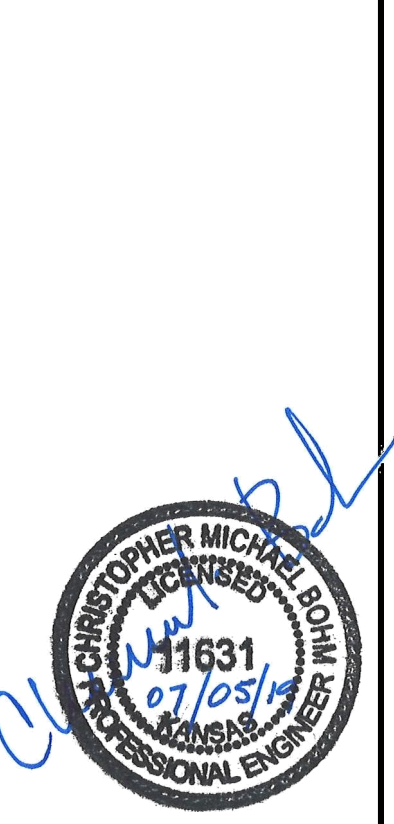
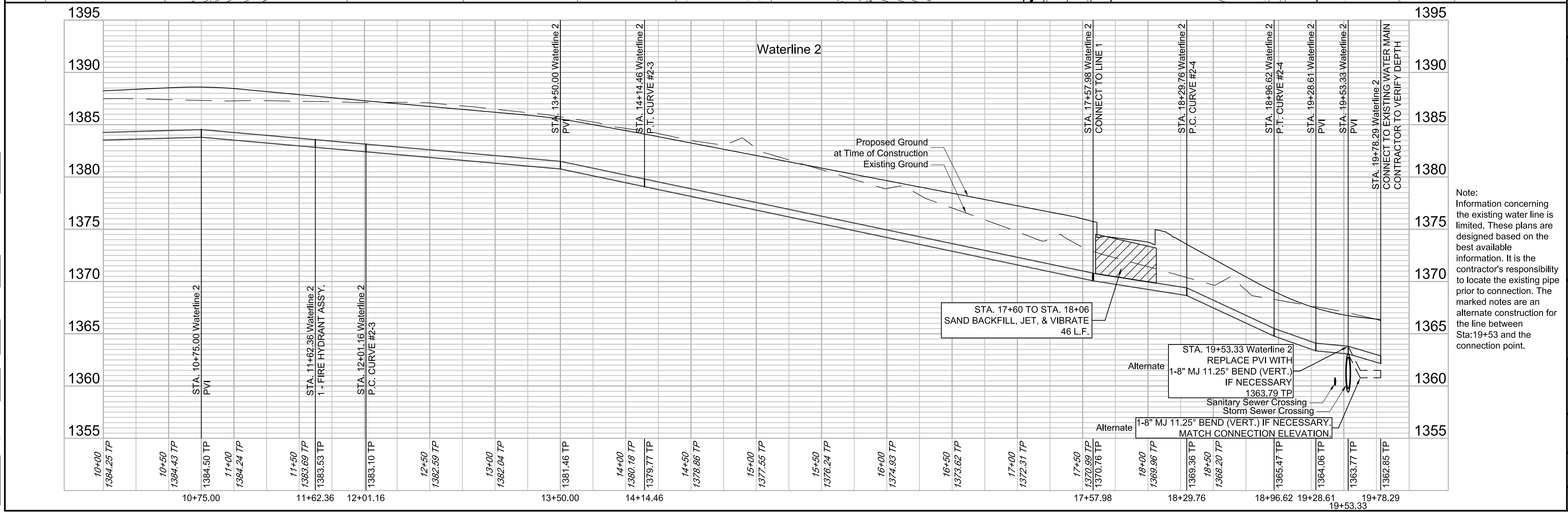


GARVER
 © 2019 GARVER, LLC
 THIS DOCUMENT, ALONG WITH THE IDEAS AND DESIGNS CONVEYED HEREIN, SHALL BE CONSIDERED INSTRUMENTS OF PROFESSIONAL SERVICE AND ARE PROPERTY OF GARVER, LLC. ANY USE, REPRODUCTION, OR DISTRIBUTION OF THIS DOCUMENT, ALONG WITH THE IDEAS AND DESIGN CONTAINED HEREIN, IS PROHIBITED UNLESS AUTHORIZED IN WRITING BY GARVER, LLC OR EXPLICITLY ALLOWED IN THE GOVERNING PROFESSIONAL SERVICES AGREEMENT FOR THIS WORK.



BY	DATE	DESCRIPTION



Note:
 Information concerning the existing water line is limited. These plans are designed based on the best available information. It is the contractor's responsibility to locate the existing pipe prior to connection. The marked notes are an alternate construction for the line between Sta: 19+53 and the connection point.

REV.	DATE	DESCRIPTION

CITY OF WICHITA
 WICHITA, KS
 CEDAR CREEK ADDITION
 PHASE 1
 WATER

Waterline 2

JOB NO.: 18266039
 DATE: July 2019
 DESIGNED BY: CMB
 DRAWN BY: CDJ

BAR IS ONE INCH ON ORIGINAL DRAWING
 0 = ONE INCH ON THIS SHEET, ADJUST SCALES ACCORDINGLY.

DRAWING NUMBER

SHEET NUMBER **5** OF **16**

File: L:\2018\18266039 - Cedar Creek Phase 1\Drawings\C3D\Waterline 2.dwg, Last Save: 6/28/2019 8:49 AM, Last saved by: CDJurey
 Last plotted by: Jurey, Caleb D., Plot Style: ---, Plot Scale: 1:2,5849, Plot Date: 7/11/2019 3:29 PM, Plotter used: None