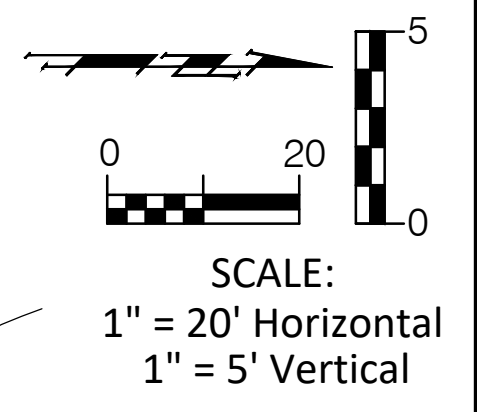
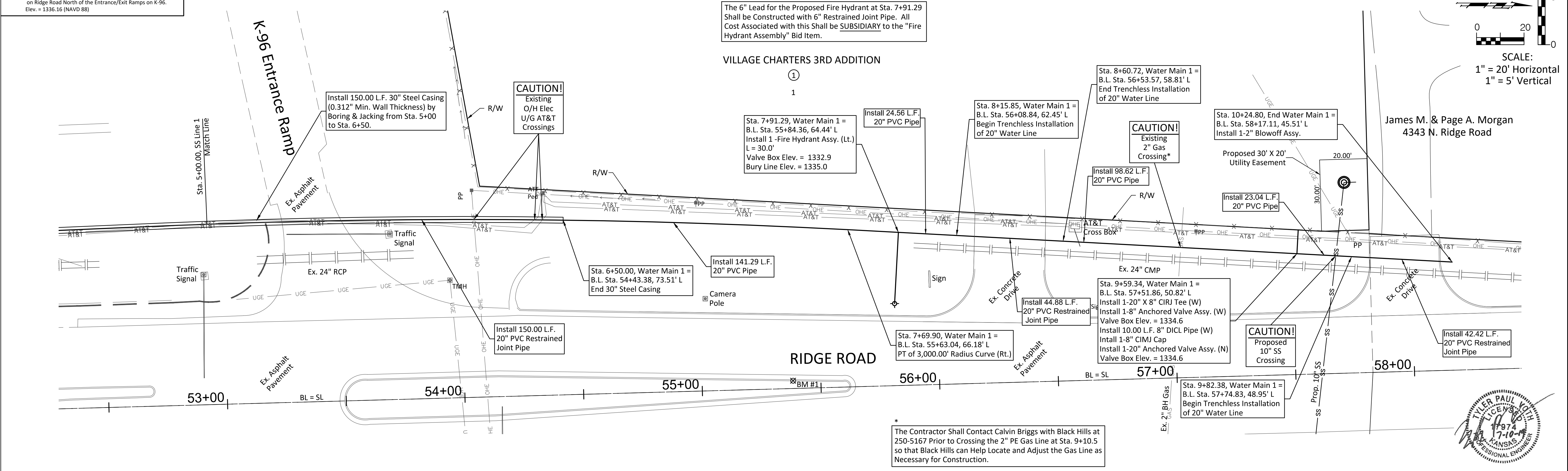


BENCHMARK:
 BM #1 - Chiseled "X" on Top of the Curb on the West Side of the Median on Ridge Road North of the Entrance/Exit Ramps on K-96.
 Elev. = 1336.16 (NAVD 88)



* The Contractor Shall Contact Calvin Briggs with Black Hills at 250-5167 Prior to Crossing the 2" PE Gas Line at Sta. 9+10.5 so that Black Hills can Help Locate and Adjust the Gas Line as Necessary for Construction.



1345	Sta. 5+00.00, Water Main 1 = Match Line		1345	Sta. 5+00.00, Water Main 1 = Match Line
1340			1340	
1335			1335	
1330			1330	
1325			1325	
1320			1320	
1315			1315	
	5+00.00	6+00	6+50.00	7+00
	1326.65 = T.P.	1326.65 = T.P.	1326.65 = T.P.	1326.92 = T.P.
	7+69.90	8+00	8+15.85	8+60.72
	1327.31 = T.P.	1328.27 = T.P.	1328.46 = T.P.	1329.73 = T.P.
	9+00	9+59.34	9+82.38	10+00
	1330.55 = T.P.	1330.59 = T.P.	1330.62 = T.P.	1330.64 = T.P.
	10+24.80			
	1330.67 = T.P.			

BAUGHMAN COMPANY
 315 Ellis St., Wichita, KS 67211 316-262-7271
 BaughmanCo.com

WATER MAIN EXTENSION
 Sta. 5+00.00 - Sta. 10+24.80
 VILLAGE CHARTERS 3RD ADDITION
 WATER MAIN/WATER ANALYSIS

PROJECT NUMBER: 448-005419
 INTERNAL NUMBER: 18-11-E124
 DESIGN: TPV
 DRAWN: TPV
 DATE: July 2019
 SHEET: 4 OF 13