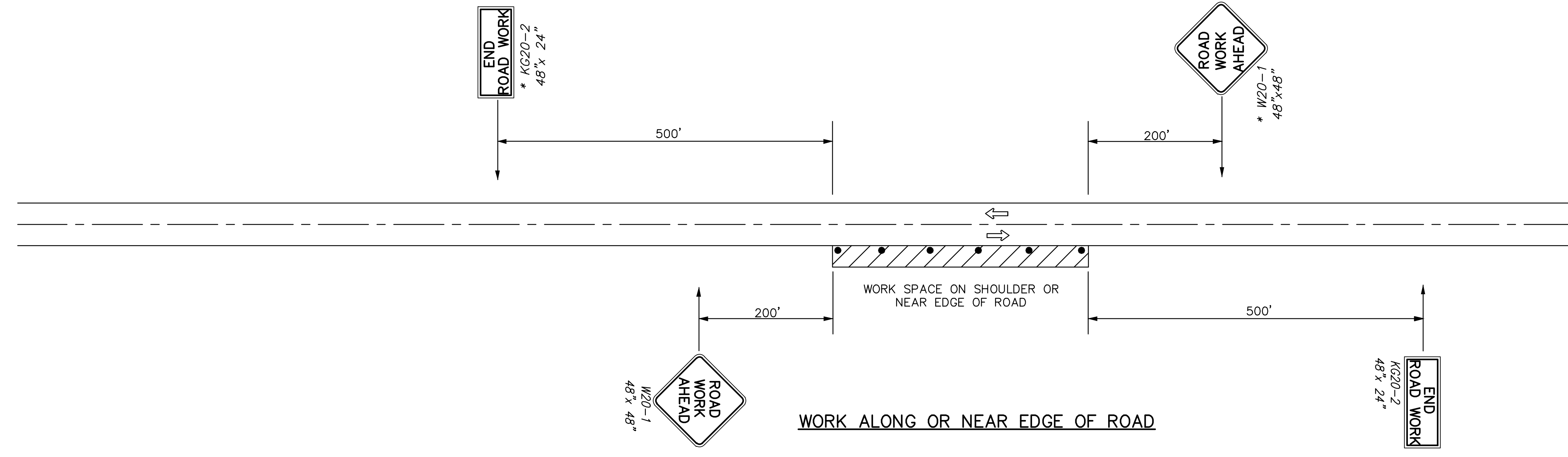


PLOTTED: Sunday, July 09, 2017 @ 03:11PM

STREET IMPROVEMENT PLANS FOR
MT. VERNON BIKE LANES
FROM OLIVER TO WOODLAWN

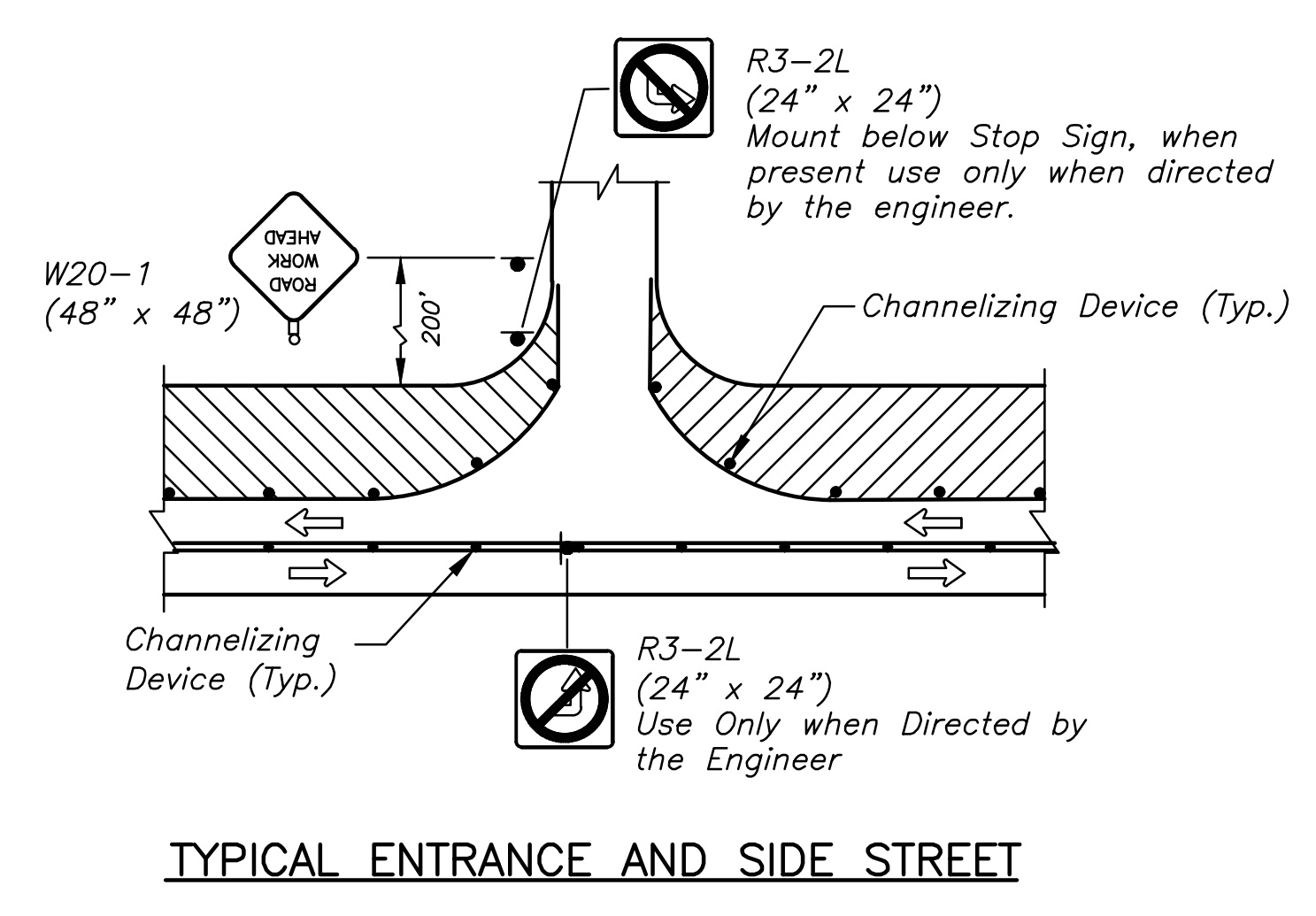
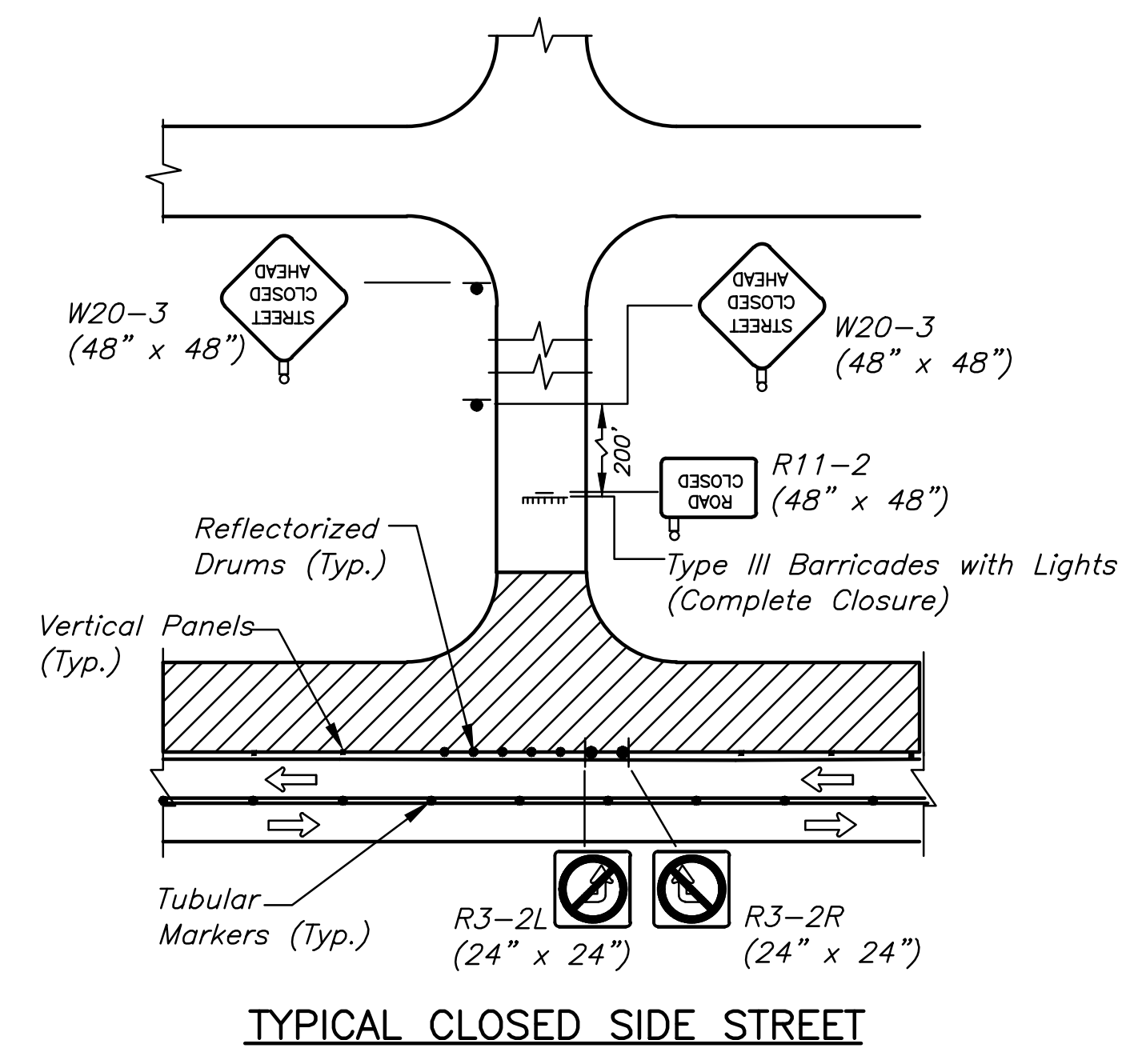



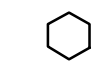





When work zone is 6' or more from back of curb, traffic controls are not necessary.

For operations of 60 minutes or less, all signs and channelizing devices may be eliminated if a vehicle with high-intensity, rotating, flashing, oscillating, or stroke lights is used.

This detail is not applicable when curb and/or ramp removal and/or replacement is occurring. This work requires the adjacent lane of traffic to be closed. See Sheet 23.

* Not Required on 4-lane or divided roadways.



- LEGEND**
-  Type III Barricades with lights
 -  Mount On Type III Barricade
 -  Type B Warning Light
 -  Sign
 -  Direction of Traffic
 -  Work Area
 -  Channelizer

©2017 MKEC Engineering All Rights Reserved
www.mkec.com
These drawings and their contents, including, but not limited to, all concepts, designs, & lists are the exclusive property of MKEC Engineering (MKEC), and may not be used or reproduced in any way without the express consent of MKEC.

TRAFFIC CONTROL - WORK NEAR & AT THE EDGE OF ROADWAY

PROJECT NO.	472-85295	
DATE	JULY 7, 2017	
SCALE	#"=#"	
DESIGNED	DRAWN	CHECKED
ABC	ABC	ABC

NO.	REVISION	DATE

J:\PROJECTS\2017\1301040541_MT_VERNON_BIKE_LANES\CIVIL\CAD\TRAFFIC\13541_T06.DWG