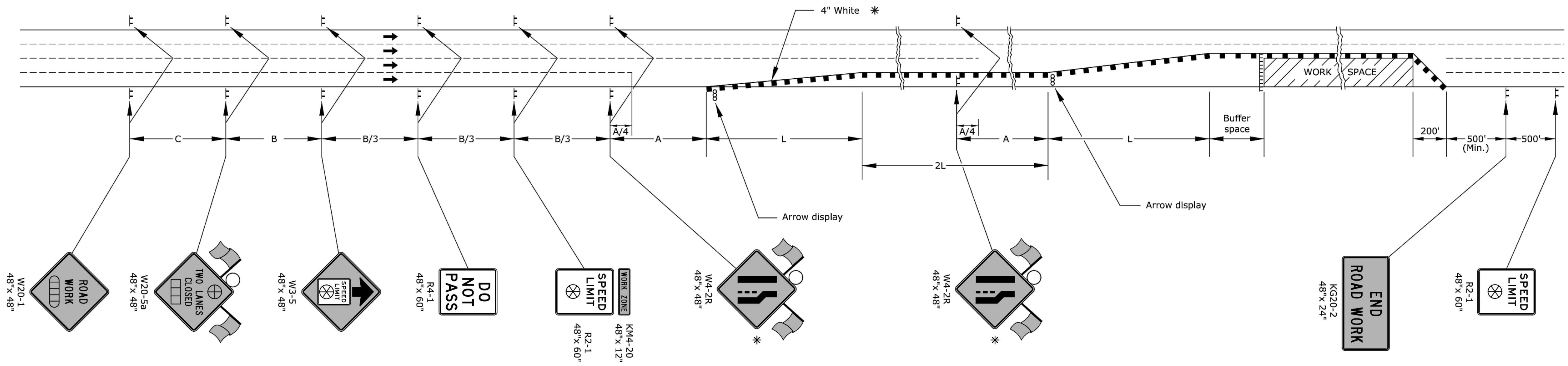


File: 18746.dgn



- ▤ Type 3 barricades
- X Length to the nearest whole mile
- Channelizing device
- ▭ Ahead, 1500 ft, or 1 mile
- ▭ Ahead, 1000 ft, 1500 ft, or 1/2 mile
- ⊕ Right or left
- ⊗ Speed to be determined by the Engineer
- Type "A" low intensity warning light

* For left lane closures use W4-2L and yellow edge line along channelizing devices.

One flagger should be stationed within each multi-lane roadway activity area where work is in a closed lane adjacent to traffic and not separated by a concrete safety barrier system.

3				
2				
1				
NO.	DATE	REVISIONS	BY	APP'D

KANSAS DEPARTMENT OF TRANSPORTATION

**TRAFFIC CONTROL
TWO LANES CLOSED**

TE746

FHWA APPROVAL	06/01/15	APP'D	Kristina Ericksen
DESIGNED	B.A.H	QUANTITIES	TRACED
DESIGN CK.	DETAIL CK.	QUAN. CK.	TRACE CK.

KDOT Graphics Certified 06-01-2015