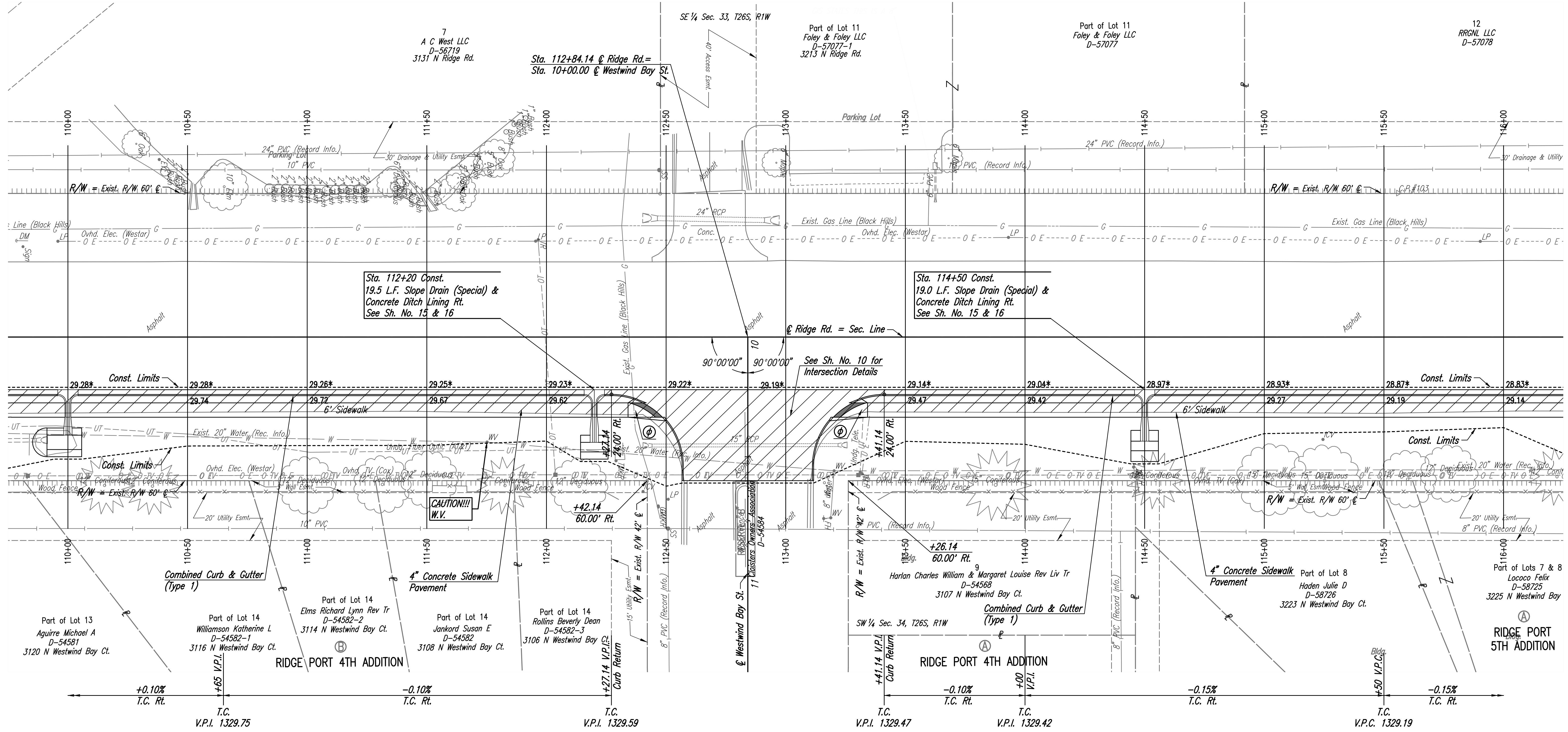
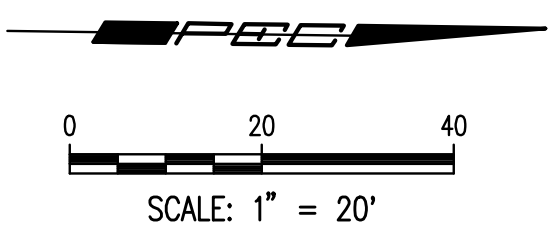


CP #103 60.15' Lt. @ Sta. 115+55.93
 1/2" rebar W/PEC Control Cap W Side Ridge Rd. N of
 Foley Dental
 N 1,705,658.322 E 1,622,750.649
 39.62' NNE
 28.50' E
 142.50' NNW

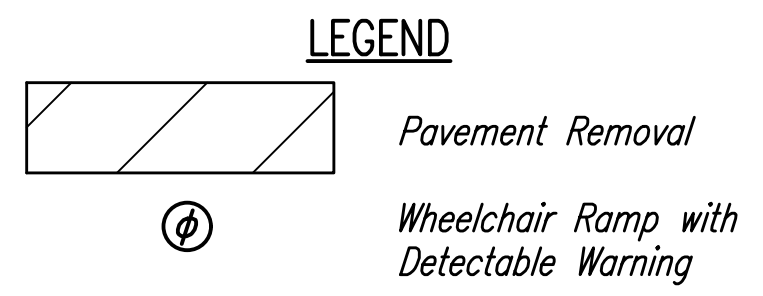


Sta. 112+20 Const.
 19.5 L.F. Slope Drain (Special) &
 Concrete Ditch Lining Rt.
 See Sh. No. 15 & 16

Sta. 114+50 Const.
 19.0 L.F. Slope Drain (Special) &
 Concrete Ditch Lining Rt.
 See Sh. No. 15 & 16

Note: Elevations shown along Curb and Gutter
 are to High Edge and Top of Curb.

- UTILITIES**
- Cable TV
 - Gas
 - Power
 - Sanitary Sewer
 - Storm Water Sewer
 - Communications
 - Water
 - Cox Communications
 - Black Hills Energy
 - Westar Energy
 - City of Wichita
 - City of Wichita
 - AT&T (Distribution)
 - City of Wichita



No.	Revision	By	Date
RIDGE ROAD SIDEWALK IMPROVEMENTS 29TH STREET NORTH TO VILLAGE CIRCLE PLAN STA. 110+00 TO STA. 116+00 GARY JANZEN, P.E. - CITY ENGINEER CITY OF WICHITA PROJECT NO. 472-85395			
PROFESSIONAL ENGINEERING CONSULTANTS, P.A. 303 SOUTH TOPEKA WICHITA, KS 67202 316-262-2691 www.pec1.com			
Designed by	CKC	Job No. 31-170394-001	Sht. 05 of 45
Drawn by	CP	Date January 2019	

Saved: 11-06-2018 4:45:52 PM by CP
 Plot Scale: 1" = 20' - 24-2019 10:40:13 AM by CP
 U:\Wichita-Civil\2017\170394\001\Main-Trans\Drawings\170394-001-05C-PLAN