

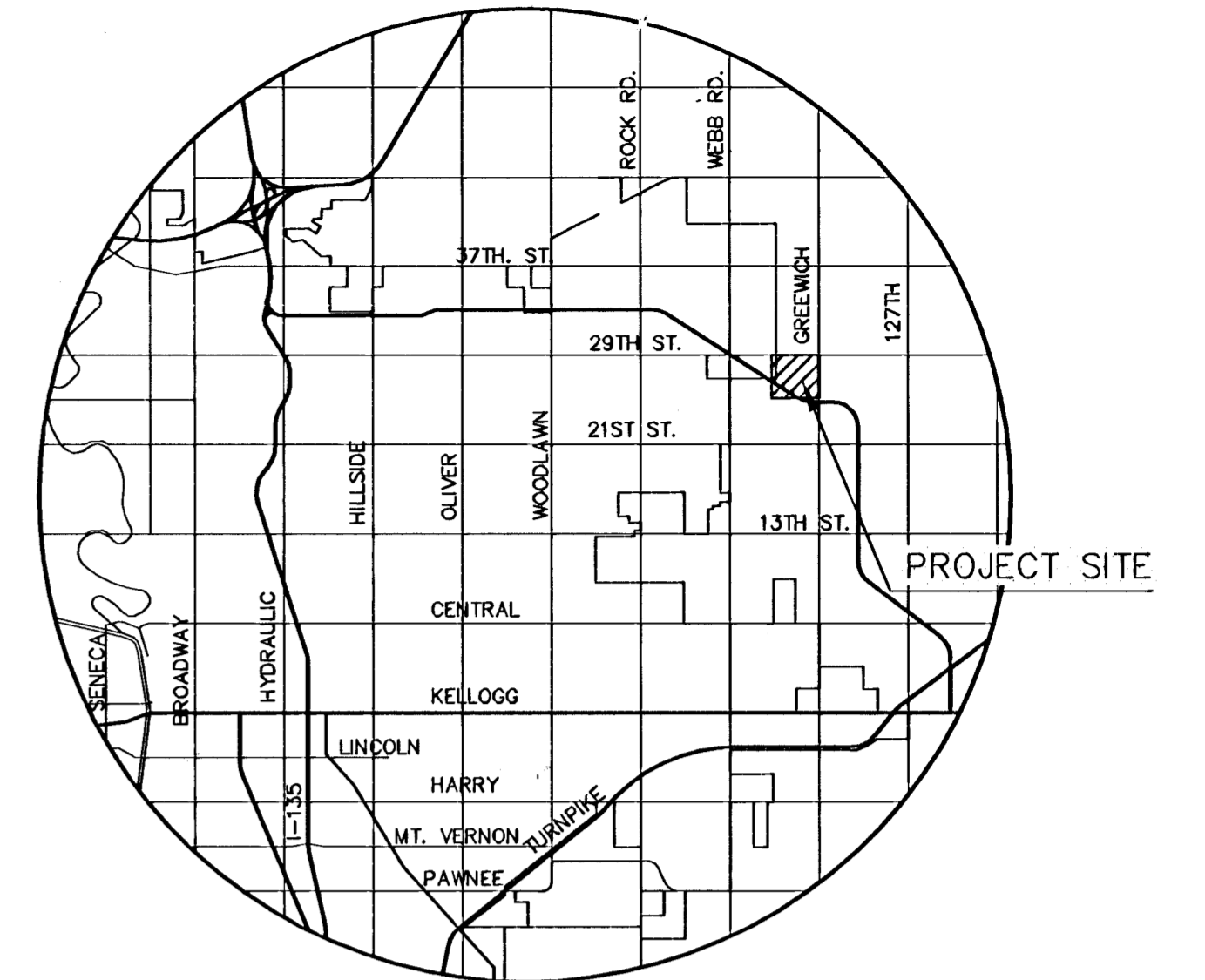
PAVING FOR
REGENCY PARK

AN ADDITION TO THE CITY OF WICHITA
 SEDGWICK COUNTY, KANSAS
PROJECT NO. 472-83803

JIM ARMOUR, P.E. - ACTING CITY ENGINEER

OCA NO. 765895

**REGENCY PARK: FROM THE WEST LINE OF LOT 5, BLOCK 1 TO THE WEST
 EDGE OF GREENWICH ROAD**



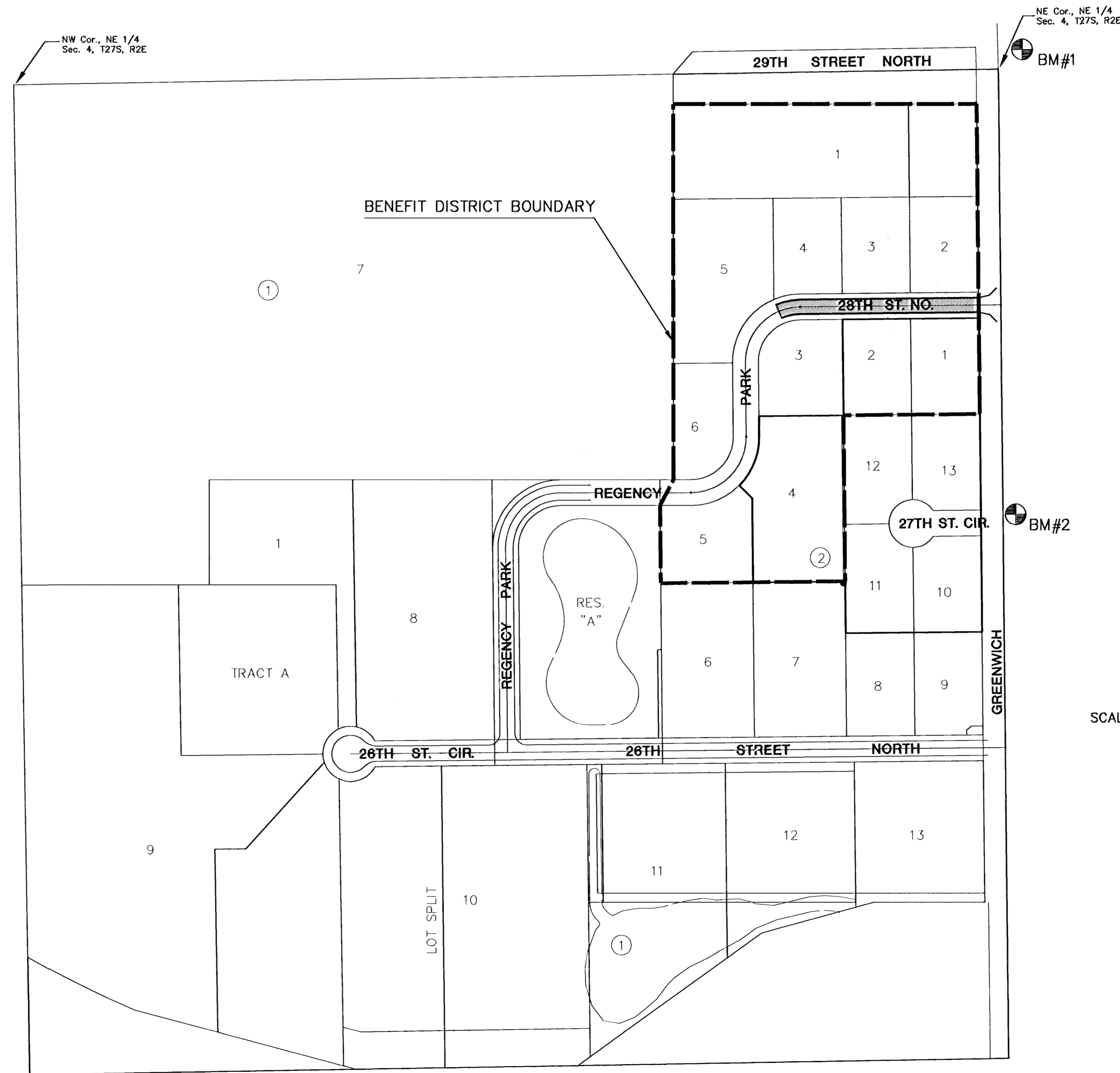
GENERAL NOTES

- UNLESS SHOWN OR STATED OTHERWISE ON THESE DRAWINGS, MATERIALS AND CONSTRUCTION SHALL BE IN ACCORDANCE WITH CITY OF WICHITA STANDARD SPECIFICATIONS.
- THE CONTRACTOR SHALL BE RESPONSIBLE FOR PRESERVING PROPERTY IRONS. THE CONTRACTOR WILL BE REQUIRED TO RE-ESTABLISH ANY PROPERTY IRONS WHICH ARE DAMAGED OR DESTROYED BY HIS CONSTRUCTION OPERATIONS. SUCH IRONS SHALL BE RE-ESTABLISHED BY A LICENSED LAND SURVEYOR IN ACCORDANCE WITH STATE LAWS.
- EXISTING UTILITIES AND THEIR LOCATIONS, AS SHOWN ON THE PLANS REPRESENT THE BEST INFORMATION OBTAINABLE FOR DESIGN. LOCATION INFORMATION HAS BEEN OBTAINED FROM THE VARIOUS UTILITY COMPANIES AND IS EITHER FROM COMPANY RECORD DRAWINGS OR COMPANY PROVIDED FIELD LOCATIONS. THE PLAN LOCATIONS SHOWN ARE NOT GUARANTEED. ADDITIONAL EXISTING UTILITIES MAY ALSO BE ENCOUNTERED.
- CONTRACTOR WILL BE REQUIRED TO PROVIDE A MINIMUM ADVANCE NOTICE OF SEVENTY-TWO (72) HOURS TO UTILITY COMPANIES PRIOR TO STARTING ANY EXCAVATION AS FOLLOWS:
 KANSAS ONE-CALL 1-800-344-7233
 OR 687-2470 (LOCAL WICHITA)

THE CONTRACTOR MUST NOTIFY THE FOLLOWING IN CASE OF AN EMERGENCY:

SBC (TELEPHONE)	800-870-8390
COX COMMUNICATIONS (CABLE)	262-0661
WESTAR (ELECTRIC)	383-8600
KANSAS GAS SERVICE (GAS)	832-3101
CITY OF WICHITA WATER & SEWER MAINT.	262-6000
AQUILA (GAS)	946-0096

- RUBBLE FROM THE REMOVAL OF MISCELLANEOUS STRUCTURES AND EXCESS EXCAVATION WHICH IS TO BE WASTED SHALL BE DISPOSED OF ON SITES TO BE PROVIDED BY THE CONTRACTOR. THESE SITES SHALL BE APPROVED BY THE ENGINEER AS TO SUITABILITY, APPEARANCE AND SITE LOCATION. LOCATIONS THAT, IN THE OPINION OF THE ENGINEER, WILL LEAVE AN UNSIGHTLY APPEARANCE WILL NOT BE APPROVED. ALL DISPOSAL SITES MUST BE APPROVED BY THE KANSAS DEPARTMENT OF HEALTH AND ENVIRONMENT. MATERIAL EITHER STOCKPILED OR DISPOSED OF IN A FLOOD PLAIN WOULD REQUIRE A KANSAS STATE BOARD OF AGRICULTURE PERMIT. ANY MATERIAL DUMPED IN WATERS OF THE UNITED STATES OR WETLANDS IS SUBJECT TO U.S. CORPS OF ENGINEERS PERMITTING REGULATIONS. ANY MATERIAL BURIED OR STOCKPILED BEYOND APPROVED CONSTRUCTION LIMITS WOULD REQUIRE ADDITIONAL ARCHAEOLOGICAL INVESTIGATIONS UNLESS BURIED IN A PREVIOUSLY APPROVED BORROW LOCATION.
- COST OF EXCAVATION, HAULING, AND DUMPING OF EXCESS EXCAVATION SHALL BE SUBSIDIARY TO THE PROJECT.
- TREES AND SHRUBS IN PUBLIC RIGHT-OF-WAY AND EASEMENTS WHICH ARE IN DIRECT CONFLICT WITH PROPOSED NEW CONSTRUCTION SHALL BE REMOVED BY THE CONTRACTOR WITH THE ENGINEER'S APPROVAL. TREES AND SHRUBS WHICH ARE NOT IN DIRECT CONFLICT WITH PROPOSED NEW CONSTRUCTION SHALL BE SAVED AND PROTECTED FROM DAMAGE.
- ALL DISTURBED AREAS TO BE SEEDED WITH RYE GRASS AT A RATE OF 200 LBS. PER ACRE WITH IN 10 DAYS OF CONSTRUCTION. CONTRACTOR TO PREPARE GROUND PER CITY SPECIFICATIONS. COST IS SUBSIDIARY OF SITE PREPARATION AND RESTORATION.
- A SAW CUT OF AT LEAST ONE-HALF THE DEPTH OF THE EXISTING SURFACE COURSES OR ONE-FOURTH THE DEPTH OF THE EXISTING TOTAL PAVEMENT THICKNESS SHALL BE PROVIDED AT LOCATIONS WHERE PROPOSED CONSTRUCTION ABUTS AN EXISTING SURFACE OR PAVEMENT IS REQUIRED. SAW JOINT TO FACILITATE REMOVAL WITHIN THREE (3) FEET OF EXISTING JOINTS WILL NOT BE PERMITTED AND FOR SUCH INSTANCES THE LIMITS OF REMOVAL SHALL EXTEND TO THE EXISTING JOINT. SUCH SAW CUTS WILL NOT BE PAID FOR DIRECTLY AND THIS COST SHALL BE CONSIDERED AS SUBSIDIARY TO THE REMOVAL OF SURFACE OR PAVEMENT.



INDEX TO DRAWINGS

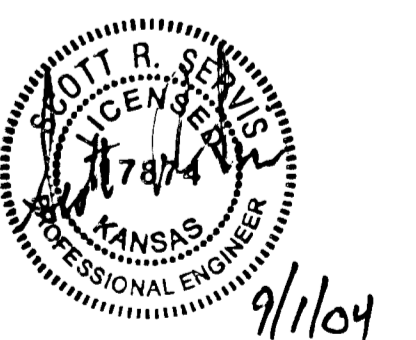
SHEET NO.	DESCRIPTION
1	TITLE SHEET
2-3	PAVING DETAILS
4-5	INLET DETAILS
6-7	28TH. STREET NORTH PAVING
8	DITCH GRADING PLANS
9-12	EROSION DETAILS
13-14	CROSS SECTIONS
15-16	FINAL PLAT

BENCHMARKS

- BM#1 BM Step Spike in West side PP, 1st. pole North of 29th. St. on East side Greenwich Rd. Elev.=201.51
- BM#2 BM Step Spike in West side PP, 6th. pole North of K-96 on East side Greenwich Rd. Elev.=192.04
- BM#3 BM Step Spike in West side PP, 1st. pole North of K-96 on East side Greenwich Rd. Elev.=184.45



SCALE: 1" = 200'



MKEC
ENGINEERING CONSULTANTS
411 N. WEBB ROAD
WICHITA, KS. 67206
316-684-9600

REGENCY PARK
PROJECT NAME

PAVING PLANS - PHASE 2A
SHEET TITLE

SRS DESIGN BY.	KKL/DM DRAWN BY.	SRS CHECKED BY.
AUGUST 2004 DATE	03211_ET JOB NO.	1 / 16 SHEET/OF