

# SHELLY'S ORCHARD ADDITION

## WICHITA, SEDGWICK COUNTY, KANSAS

State of Kansas) SS  
Sedgwick County)

We, Savoy, Ruggles & Bohm, P.A., Surveyors in aforesaid county and state do hereby certify that, under the supervision of the undersigned, we have surveyed and platted "SHELLY'S ORCHARD ADDITION", Wichita, Sedgwick County, Kansas and that the accompanying plat is a true and correct exhibit of the property surveyed, described as follows:

That part of the NW1/4 of the SW1/4 of Sec 32, Twp. 27-S, R-1-W of the 6th P.M., Sedgwick County, Kansas, except the north 115 feet thereof.

All Public easements and dedications being vacated by virtue of K.S.A. 12-512(b).

Savoy, Ruggles & Bohm, P.A.

Date \_\_\_\_\_

Mark A. Savoy RLS #788 Surveyor

Know all men by these presents that we, the undersigned have caused the land described in the surveyor's certificate to be platted into Lots, Blocks, Reserves and Streets to be known as "SHELLY'S ORCHARD ADDITION", Wichita, Sedgwick County Kansas. The utility easements are hereby granted as indicated for the construction and maintenance of all public utilities. The Streets are hereby dedicated to and for the use of the public. Access Controls are hereby granted to the City of Wichita (as indicated on the face of the plat), with the location of openings to be approved by the City Engineer. Minimum building pad elevation for lowest opening to a structure is as shown on the face of the plat.

Rick Thompson Construction Inc.

Rick Thompson President

State of Kansas) SS  
Sedgwick County)

The foregoing instrument acknowledged before me, this \_\_\_\_\_ day of \_\_\_\_\_ 1998, by Rick Thompson, President, Rick Thompson Construction Inc., on behalf of the corporation.

Notary Public

My App't. Exp. \_\_\_\_\_

This plat of "SHELLY'S ORCHARD ADDITION", Wichita, Sedgwick County, Kansas, has been submitted to and approved by the Wichita-Sedgwick County Metropolitan Area Planning Commission, Wichita, Kansas. Dated this \_\_\_\_\_ day of \_\_\_\_\_, 1997.

Wichita-Sedgwick County Metropolitan Area Planning Commission

John C. Frye Chairman

Marvin S. Krout Secretary

Bob Knight Mayor

Pat Burnett City Clerk

This plat approved and all dedications shown hereon, accepted by the City Council of the City of Wichita, Kansas, this \_\_\_\_\_ day of \_\_\_\_\_, 1998.

Entered on transfer record this \_\_\_\_\_ day of \_\_\_\_\_, 1998.

James Alford County Clerk

State of Kansas) SS  
Sedgwick County)

This is to certify that this plat has been filed for record in the office of the Register of Deeds, this \_\_\_\_\_ day of \_\_\_\_\_, 1998, at \_\_\_\_\_ o'clock \_\_\_\_\_ M. and is duly recorded.

Larry Consolver Register of Deeds

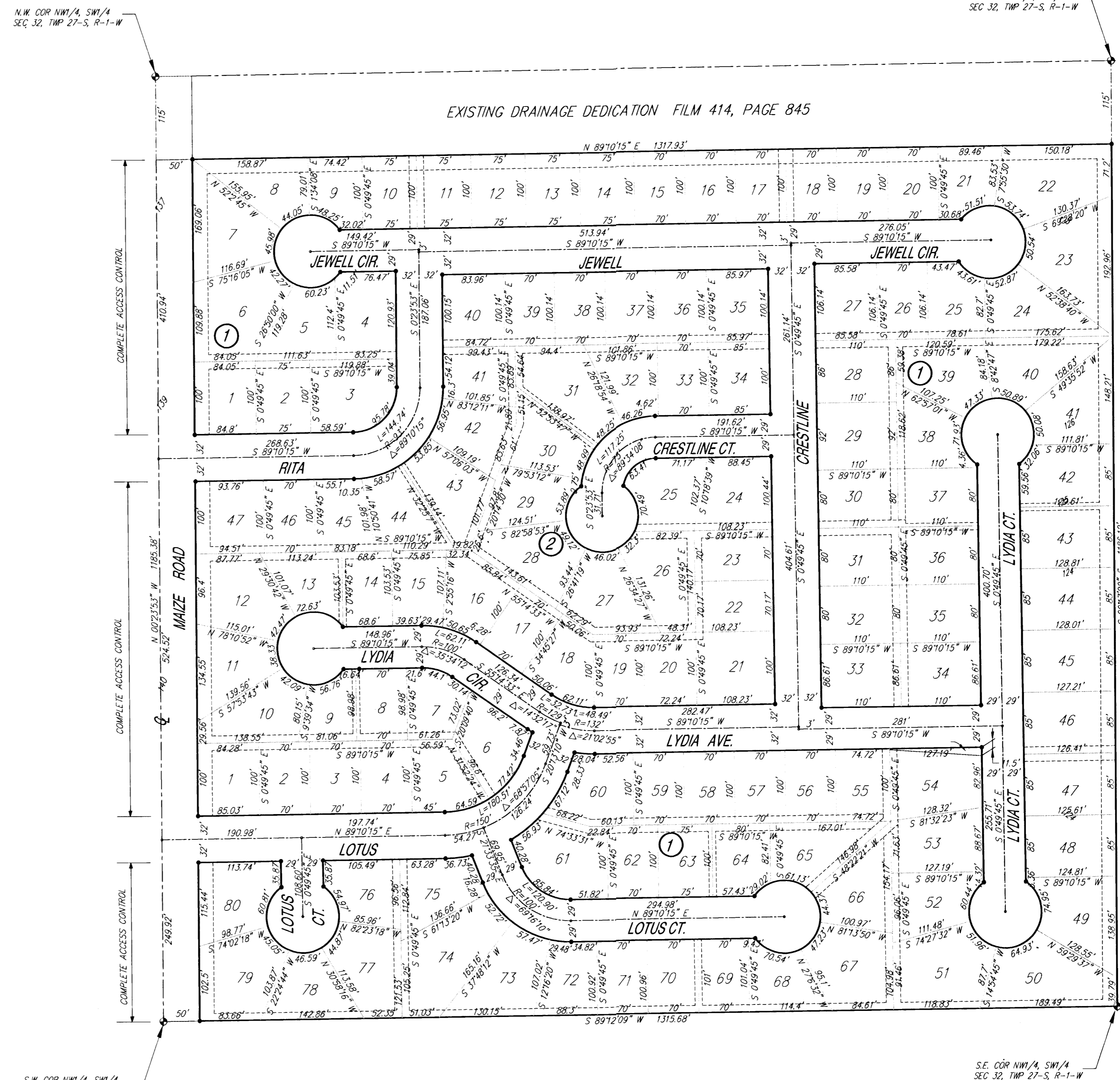
Michael D. Hurtt Deputy

N.W. COR NW1/4, SW1/4  
SEC. 32, TWP. 27-S, R-1-W

N.E. COR NW1/4, SW1/4  
SEC. 32, TWP. 27-S, R-1-W

S.W. COR NW1/4, SW1/4  
SEC. 32, TWP. 27-S, R-1-W

S.E. COR NW1/4, SW1/4  
SEC. 32, TWP. 27-S, R-1-W



LOT	BLOCK	MINIMUM BUILDING PAD ELEVATION FOR LOWEST OPENING TO A STRUCTURE	
		CITY DATUM	N.G.V.D.
8, 9, 10	1	133.5	1320.9
11, 12, 13	1	132.0	1319.4
14, 15, 16	1	130.5	1317.9
17, 18, 19	1	130.0	1317.4
20, 21, 22	1	129.5	1316.9

BENCHMARK:  
City of Wichita Benchmark disc @ Maize Road and May Street  
11.5' S and 38' E of centerline both.  
Elev=1317.67 (City Datum)  
Elev=1325.07 (NGVD)



1" = 100'  
• 1/2" REBAR W/SRB CAP  
S.B. = BUILDING SETBACK  
C.A.C. = COMPLETE ACCESS CONTROL

**Ruggles & Bohm, P.A.**  
Engineering, Surveying, Land Planning  
924 North Main (316) 264-8008  
Wichita, Kansas 67203 (316) 264-4621 fax  
www.rtkansas.com E-mail: info@rtkansas.com