

BENCHMARKS:

"□" Cut in middle of N headwall of RCBC on 21st St. North. 1004.3' W & 22.1' N of SE Cor., SE1/4, Sec. 2, T-27-S, R-2-E. Elev. = 173.23 City Datum

RR spike in N. face of power pole 840.0' west of C.L. of Castle Rock and 48.7' south of C.L. of 21st St. N. Elev. = 182.03 City Datum

Contractor shall excavate bentonite pond liner (12" deep), save, and recompact around proposed end section after construction.

Detention Pond
Static WS = 171.0
100-yr WS = 173.7

Sta 0-07.00, Line 1
Begin construction of 30" RCP. Install 26.7 S.Y. light stone rip-rap. 1 - 30" RC headwall

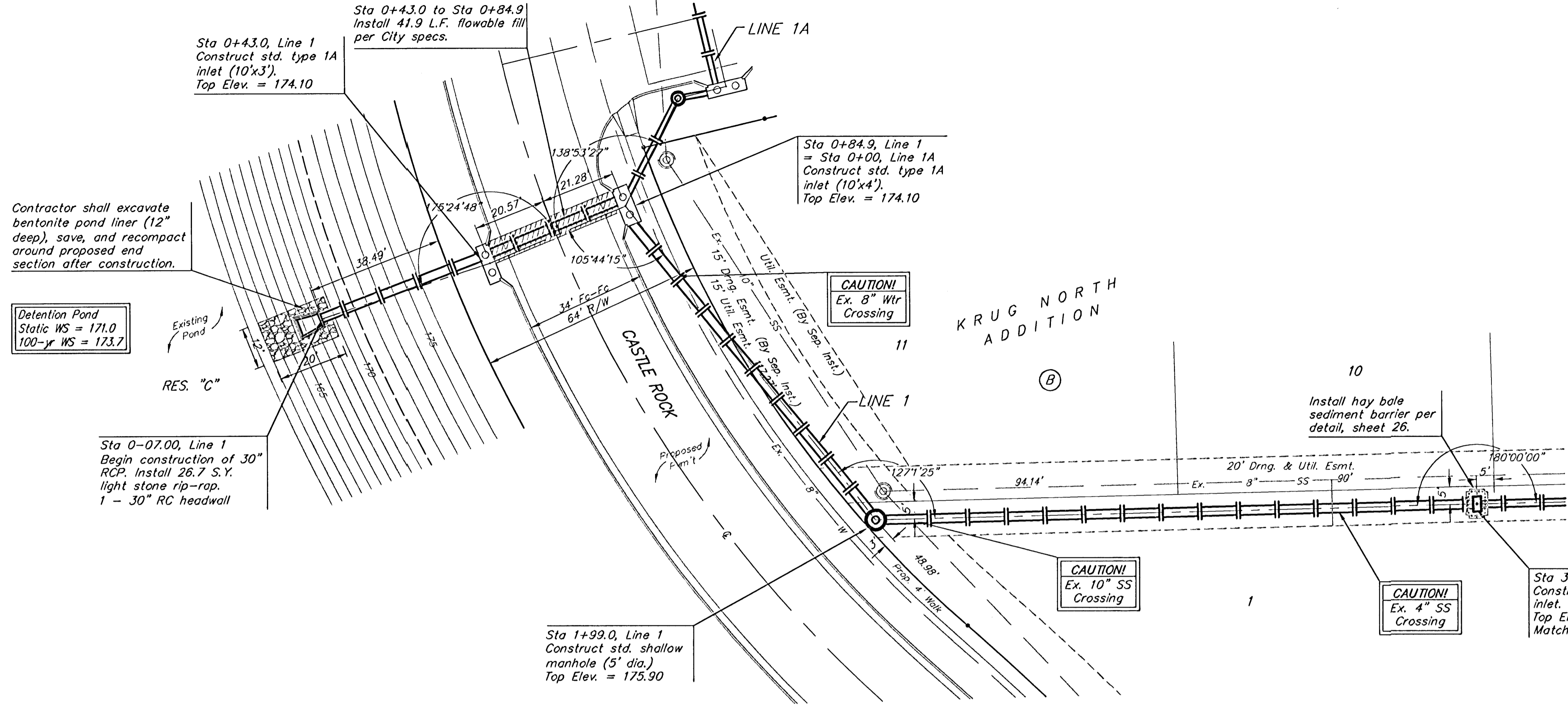
Sta 0+43.0, Line 1
Construct std. type 1A inlet (10'x3'). Top Elev. = 174.10

Sta 0+43.0 to Sta 0+84.9
Install 41.9 L.F. flowable fill per City specs.

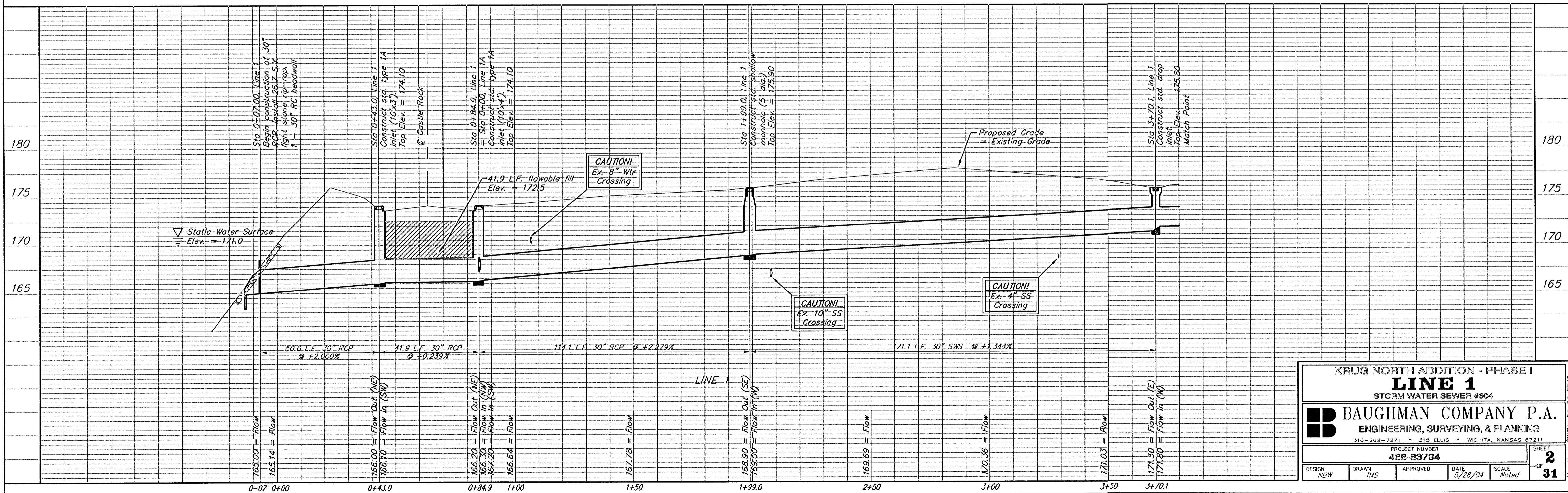
Sta 0+84.9, Line 1 = Sta 0+00, Line 1A
Construct std. type 1A inlet (10'x4'). Top Elev. = 174.10

Sta 1+99.0, Line 1
Construct std. shallow manhole (5' dia.) Top Elev. = 175.90

Sta 3+70.1, Line 1
Construct std. drop inlet. Top Elev. = 175.80 Match Point



Scale: 1" = 20' Horizontal
1" = 5' Vertical
• = Iron



KRUG NORTH ADDITION - PHASE I
LINE 1
 STORM WATER SEWER #604

BAUGHMAN COMPANY P.A.
 ENGINEERING, SURVEYING, & PLANNING
 316-262-7271 • 313 ELLIS • WICHITA, KANSAS 67211

PROJECT NUMBER: **480-83794**

DESIGN: NGW	DRAWN: TMS	APPROVED:	DATE: 3/28/04	SCALE: Noted
-------------	------------	-----------	---------------	--------------

SHEET **2** OF **31**