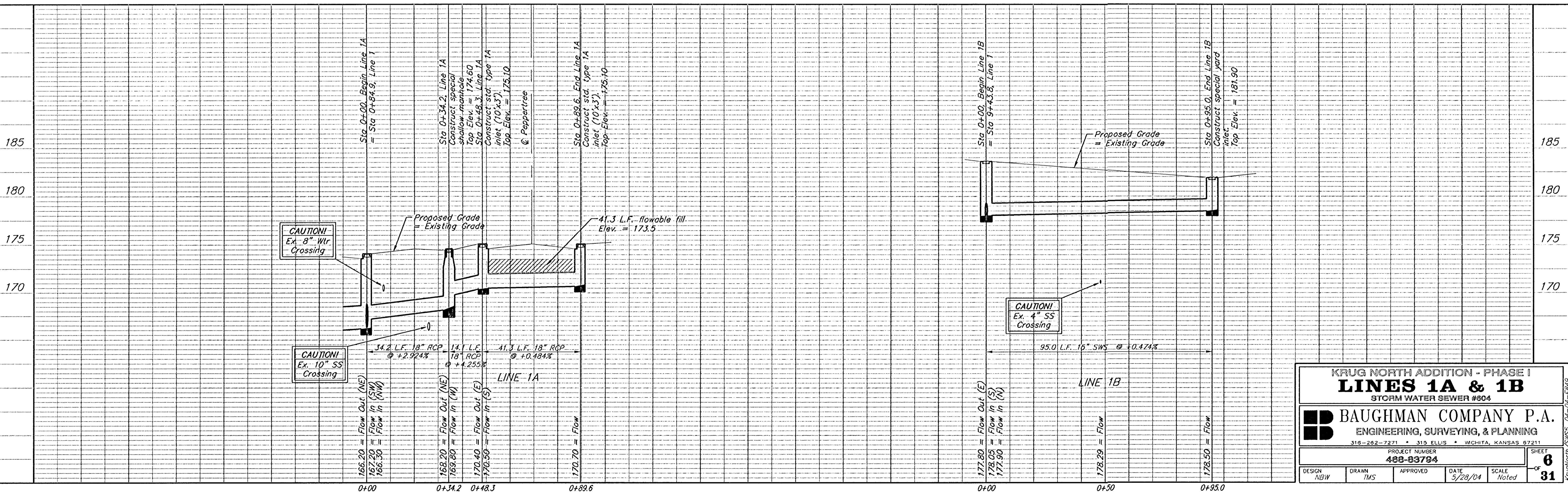
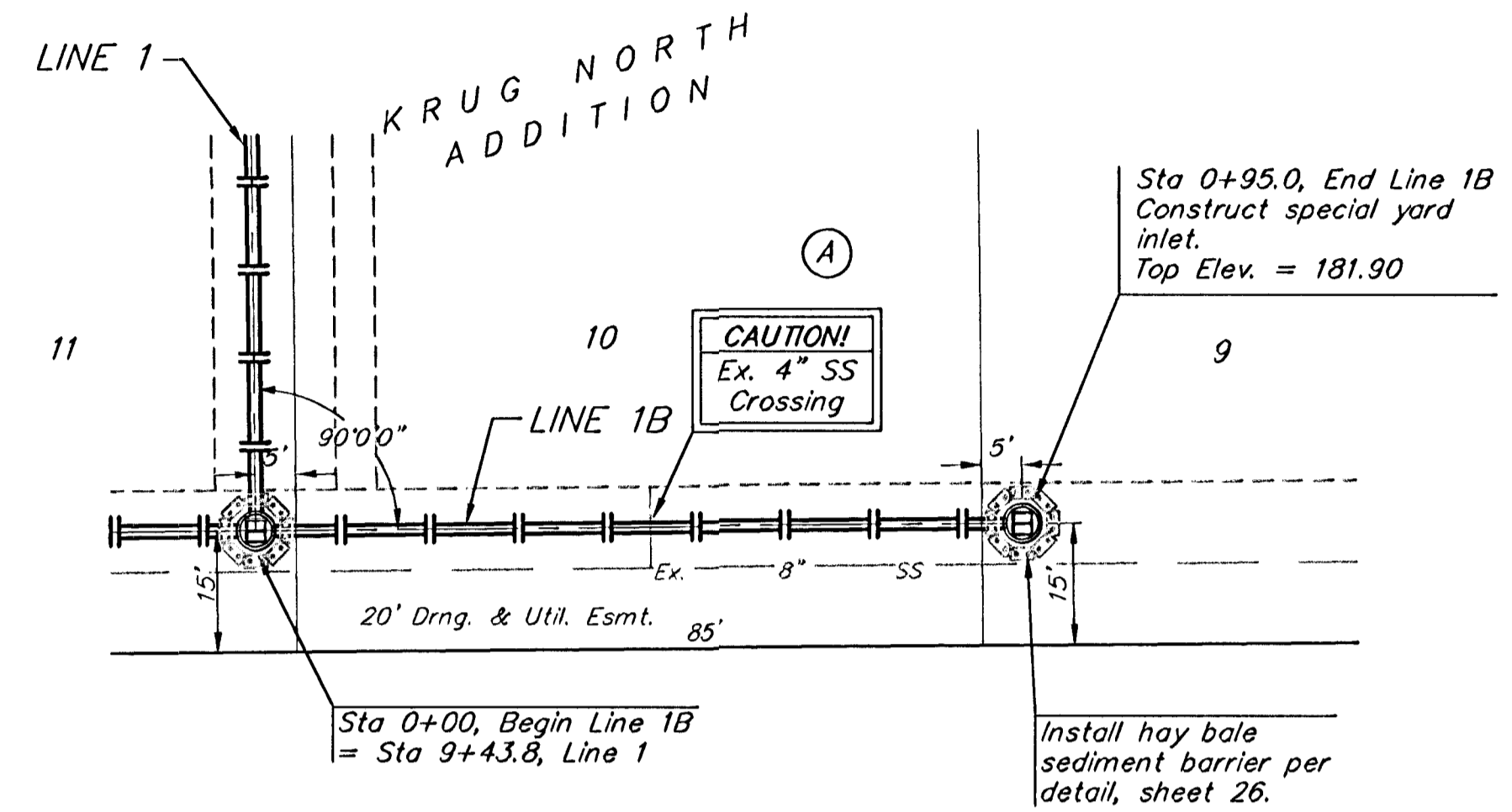
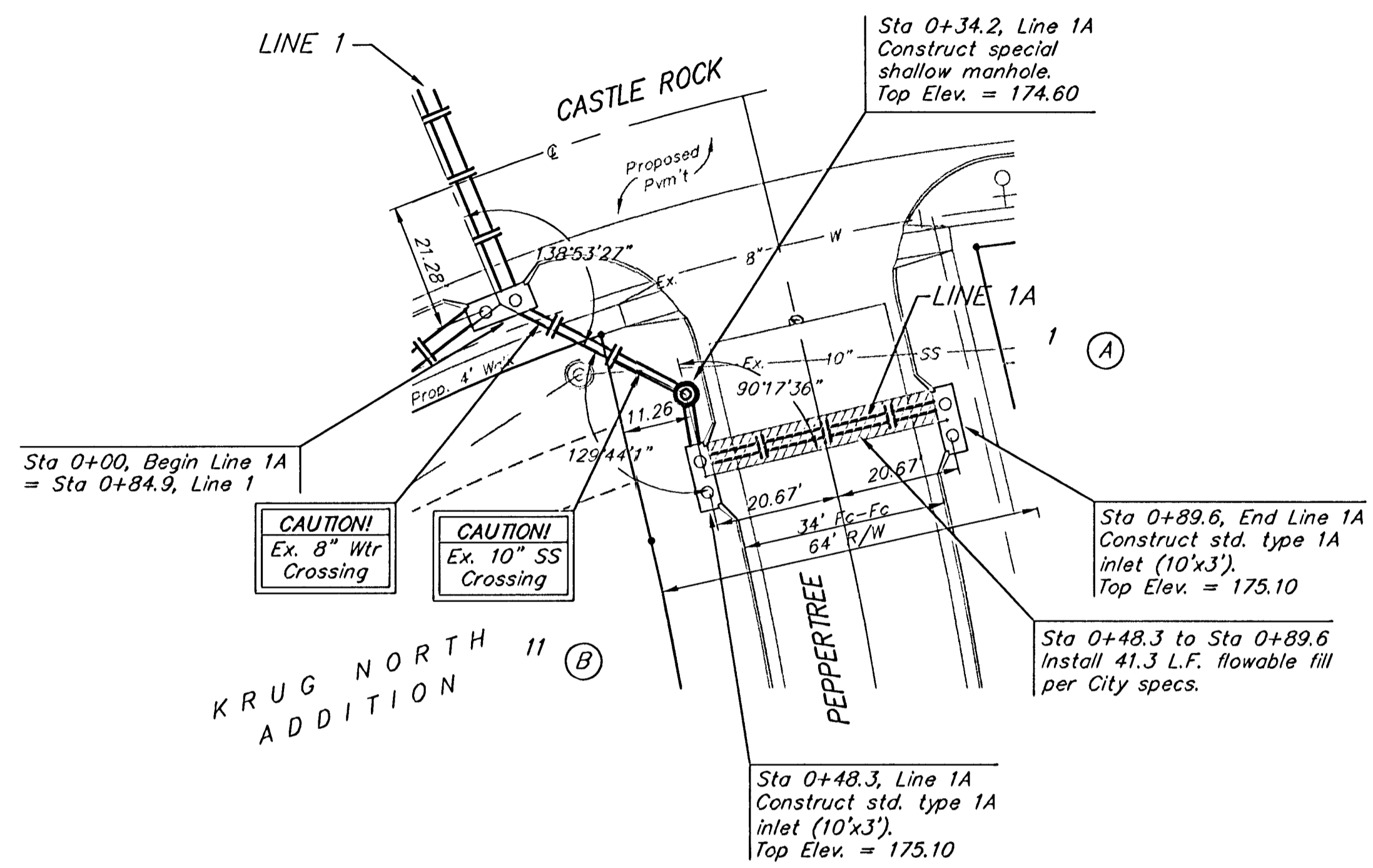


BENCHMARKS:

"□" Cut in middle of N headwall of RCBC on 21st St. North, 1004.3' W & 22.1' N of SE Cor., SE1/4, Sec. 2, T-27-S, R-2-E. Elev. = 173.23 City Datum

RR spike in N. face of power pole 840.0' west of C.L. of Castle Rock and 48.7' south of C.L. of 21st St. N. Elev. = 182.03 City Datum

Scale: 1" = 20' Horizontal
1" = 5' Vertical
• = Iron



KRUG NORTH ADDITION - PHASE I
LINES 1A & 1B
 STORM WATER SEWER #604

BAUGHMAN COMPANY P.A.
 ENGINEERING, SURVEYING, & PLANNING
 316-262-7221 • 315 ELLIS • WICHITA, KANSAS 67211

PROJECT NUMBER: **488-83784**

DESIGN: NBW	DRAWN: TMS	APPROVED:	DATE: 5/28/04	SCALE: Noted
-------------	------------	-----------	---------------	--------------

SHEET **6** OF **31**