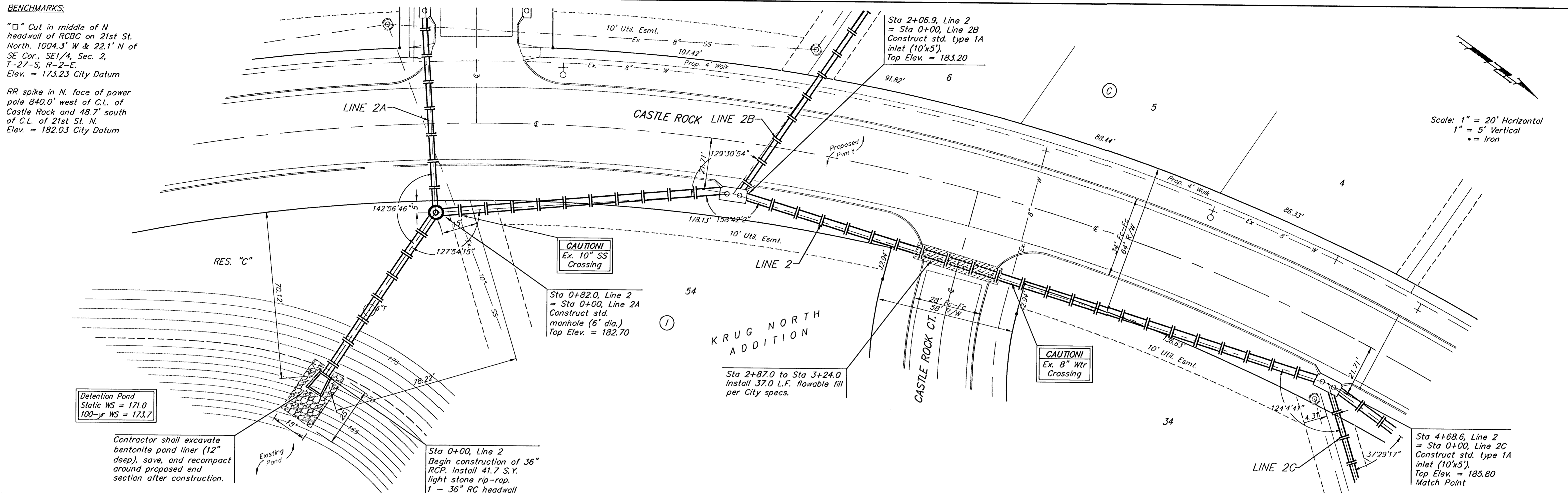


BENCHMARKS:

"□" Cut in middle of N headwall of RCBC on 21st St. North, 1004.3' W & 22.1' N of SE Cor., SE1/4, Sec. 2, T-27-S, R-2-E. Elev. = 173.23 City Datum

RR spike in N. face of power pole 340.0' west of C.L. of Castle Rock and 48.7' south of C.L. of 21st St. N. Elev. = 182.03 City Datum



Scale: 1" = 20' Horizontal
1" = 5' Vertical
• = Iron

Detention Pond
Static WS = 171.0
100-yr WS = 173.7

Contractor shall excavate bentonite pond liner (12" deep), save, and recompact around proposed end section after construction.

CAUTION!
Ex. 10" SS Crossing

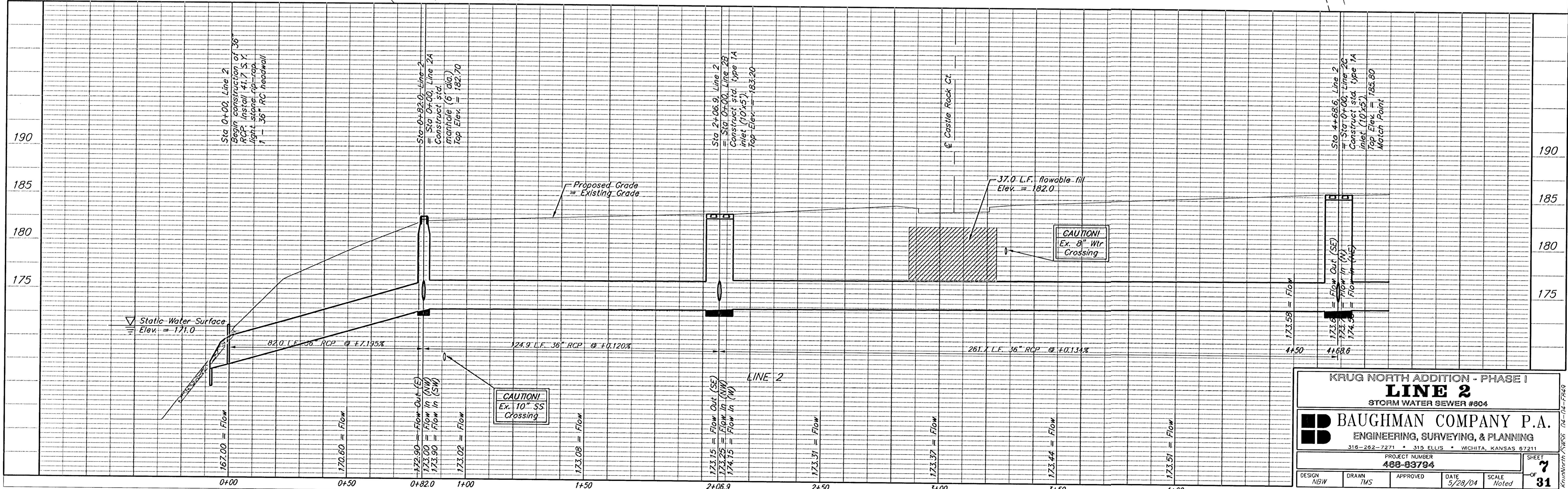
Sta 0+82.0, Line 2
= Sta 0+00, Line 2A
Construct std. manhole (6' dia.)
Top Elev. = 182.70

KRUG NORTH ADDITION

Sta 2+87.0 to Sta 3+24.0
Install 37.0 L.F. flowable fill
per City specs.

CAUTION!
Ex. 8" Wtr Crossing

Sta 4+68.6, Line 2
= Sta 0+00, Line 2C
Construct std. type 1A inlet (10'x5')
Top Elev. = 185.80
Match Point



Static Water Surface
Elev. = 171.0

Proposed Grade
= Existing Grade

37.0 L.F. flowable fill
Elev. = 182.0

CAUTION!
Ex. 8" Wtr Crossing

CAUTION!
Ex. 10" SS Crossing

KRUG NORTH ADDITION - PHASE I
LINE 2
STORM WATER SEWER #804

BAUGHMAN COMPANY P.A.
ENGINEERING, SURVEYING, & PLANNING
316-262-7271 • 315 ELLIS • WICHITA, KANSAS 67211

PROJECT NUMBER
488-83794

DESIGN NBW DRAWN TMS APPROVED DATE 5/28/04 SCALE Noted SHEET 7 OF 31