

# GENERAL NOTES:

1. Contractor will be required to provide notice to utility companies a minimum of seventy-two (72) hours prior to any excavation, as follows:

Kansas One-Call 687-2470

The Contractor must notify the following in case of an emergency:

- AT&T 1-800-246-8464
- Black Hills Energy 1-800-694-8989
- City of Wichita Water & Sewer 1-316-219-8921
- City of Wichita Stormwater 1-316-268-4090
- City of Wichita Traffic 1-316-268-4034
- Cox Communications 1-888-249-3530
- Kansas Gas Service 1-888-482-4950
- Westar Energy 1-800-544-4857

2. Utility service lines, poles, etc. are to be adjusted as necessary by others prior to construction unless the plans specifically call for their adjustment by the Contractor or unless the plans specifically identify a utility to be adjusted by its owner during construction. Existing utilities and their location, as shown on the plans, represent the best information obtainable for design. The Contractor will be required to work around existing utilities within the right-of-way which do not conflict with proposed construction.

3. Rubble from the removal of miscellaneous structures and excess excavation which is to be wasted shall be disposed of on sites to be provided by the Contractor. These sites shall be approved by the Engineer as to suitability, appearance and site location. Locations, in the opinion of the Engineer, that will leave an unsightly appearance will not be approved. All disposal sites must be approved by the Kansas Department of Health and Environment. Material either stockpiled or disposed of in a flood plain will require a Kansas State Board of Agriculture permit. Any material dumped in waters of the United States or wetlands is subject to U.S. Corps of Engineers permitting regulations. Any material buried or stockpiled beyond approved construction limits will require additional archaeological investigations unless buried in a previously approved borrow location.

4. Trees and shrubs in public right-of-way which are in direct conflict with proposed new construction shall be removed by the Contractor with the City Engineer's approval. Trees and shrubs which are not in direct conflict with proposed new construction shall be saved and protected from damage.

5. The Contractor shall give all property owners and/or tenants of developed property abutting the construction of this project a minimum of ten (10) days notice prior to start of construction.

6. The Contractor shall be responsible for preserving property irons. The Contractor will be required to re-establish any property irons which are damaged or destroyed by his construction operations. Such irons shall be re-established by a licensed land surveyor in accordance with state laws.

7. All elevations shown are NAVD 88.

8. All areas disturbed during construction that will not be under proposed pavement shall be restored to match existing conditions.

9. Opening and closing of water valves shall be done slowly to prevent damage to the water distribution system from water hammer. All valves closed by the contractor must be reopened as new construction permits. The project inspector must ascertain that any valve closed by the Contractor is reopened. The contractor will be permitted to operate water valves only when the project inspector assigned to the project is present.

10. The Contractor shall lay a Tracer Wire and Set Test Stations along all water pipe installed in accordance with City Specifications and Tracer Wire Detail on detail sheet WL-101, cost is subsidiary to pipe installation.

11. The Contractor shall protect from damage and support existing utilities through construction as approved by the utility owner and the Engineer at the contractor's expense.

12. Contractor shall limit the extent of trench openings overnight and weekends to less than 50 feet.

13. All existing and proposed erosion control measures including silt fencing, erosion control mat, straw bales, inlet barriers, and const. entrance shall be maintained throughout construction by the contractor and until project is accepted by the City of Wichita. The on-site engineer shall complete weekly reports on the status of erosion control measures. The contractor shall be required to comply with maintenance and/or replacement of erosion control measures as determined by the on-site engineer until project is accepted by City of Wichita. Maintenance and/or replacement of erosion control measures to be paid by L.S. bid item "Maintain Existing BMP's".

14. All excess excavation shall remain on-site and shall be stockpiled or spread at a location determined by the engineer.

15. All of Maple St. R/W disturbed during construction shall be seeded and mulched as follows:

Seed -- Kansas Premium Fescue Blend; 8 lbs. PLS/1000 Sq. Ft.  
Annual Rye grass; 3 lbs./1000 Sq. Ft.  
Fertilizer -- 12-24-12 Ratio; 45 Lbs./Ac.  
Mulch -- 2 Tons Prairie Hay/Ac.

All other disturbed areas within street R/W and lots are to be seeded as follows:

Seed -- Rye grass; 5 lbs./1000 Sq. Ft.

All costs associated with seeding including mobilization, preparation of ground, seeding, fertilizing, mulching, etc. shall be included in the L.S. bid item "Seeding".

An additional bid item for "Seeding, Temporary" has been included and may be used at the discretion of the design engineer. Temporary seed shall be Annual Rye at 5 lbs./1000 Sq. Ft. unless otherwise noted and shall be planted when permanent seed or sod cannot be used due to seasonal limitations. If the "Seeding, Temporary" bid item is not used, 100% of the pay item will be deducted from the contract. All costs associated with temporary seeding including mobilization, preparation of ground, seeding, etc., shall be included in the L.S. bid item "Seeding, Temporary".

16. The developer for this project is Jay W. Russell, P.O. Box 75337, Wichita, KS 67272 (316)722-2417 jwrussell1105@cloud.com

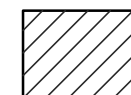
17. The Contractor shall comply with all applicable safety regulations. All construction shall be completed following Current City Standard Specifications and Special Provisions.

## Benchmark

BM #1: City of Wichita disc top of headwall of RCBC 660'± east of the SE Cor. of the SE1/4, SEC. 22, TWP. 27-S, R-2-W. Elev. = 1410.27 NAVD88

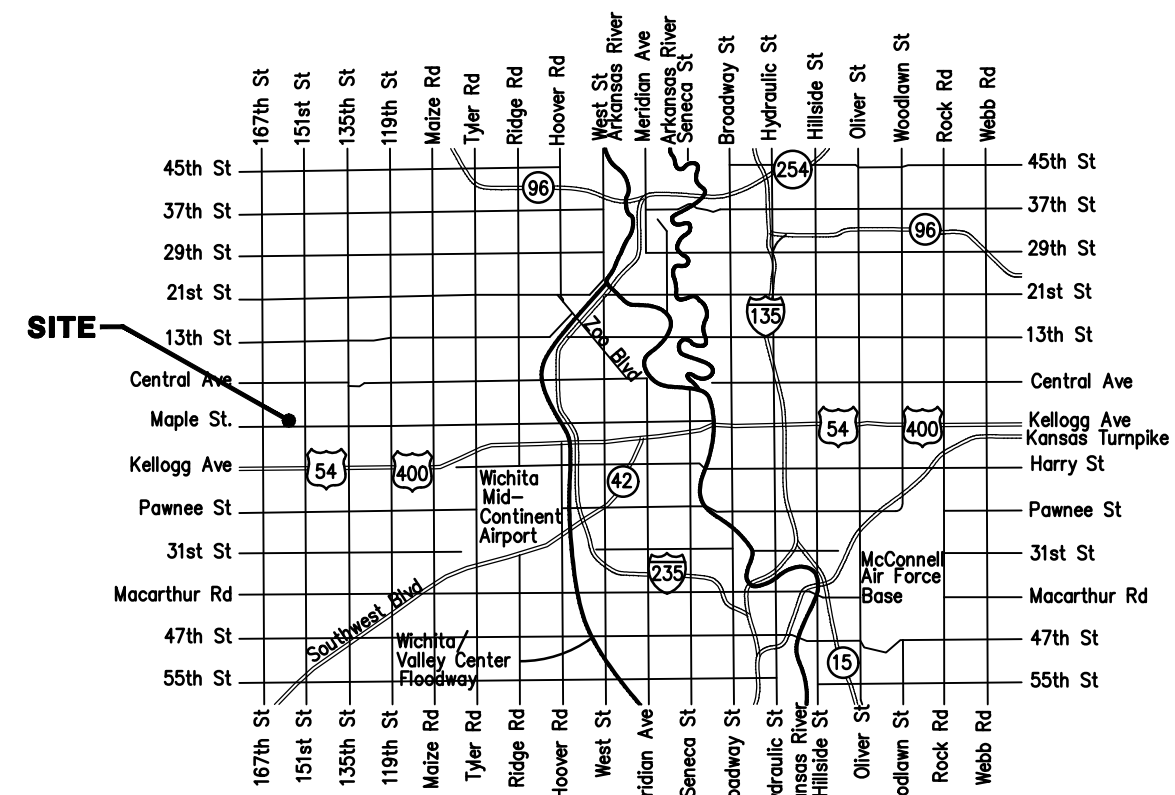
BM #2: 60d step nail in utility pole 28' east of Q 162nd St. W. and 26' north of Q of Maple. Elev. = 1417.99 NAVD88

## Benefit District



# WATER DISTRIBUTION SYSTEM to serve PIKE ADDITION - PH. IA CITY OF WICHITA, KANSAS

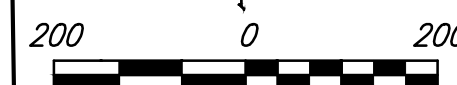
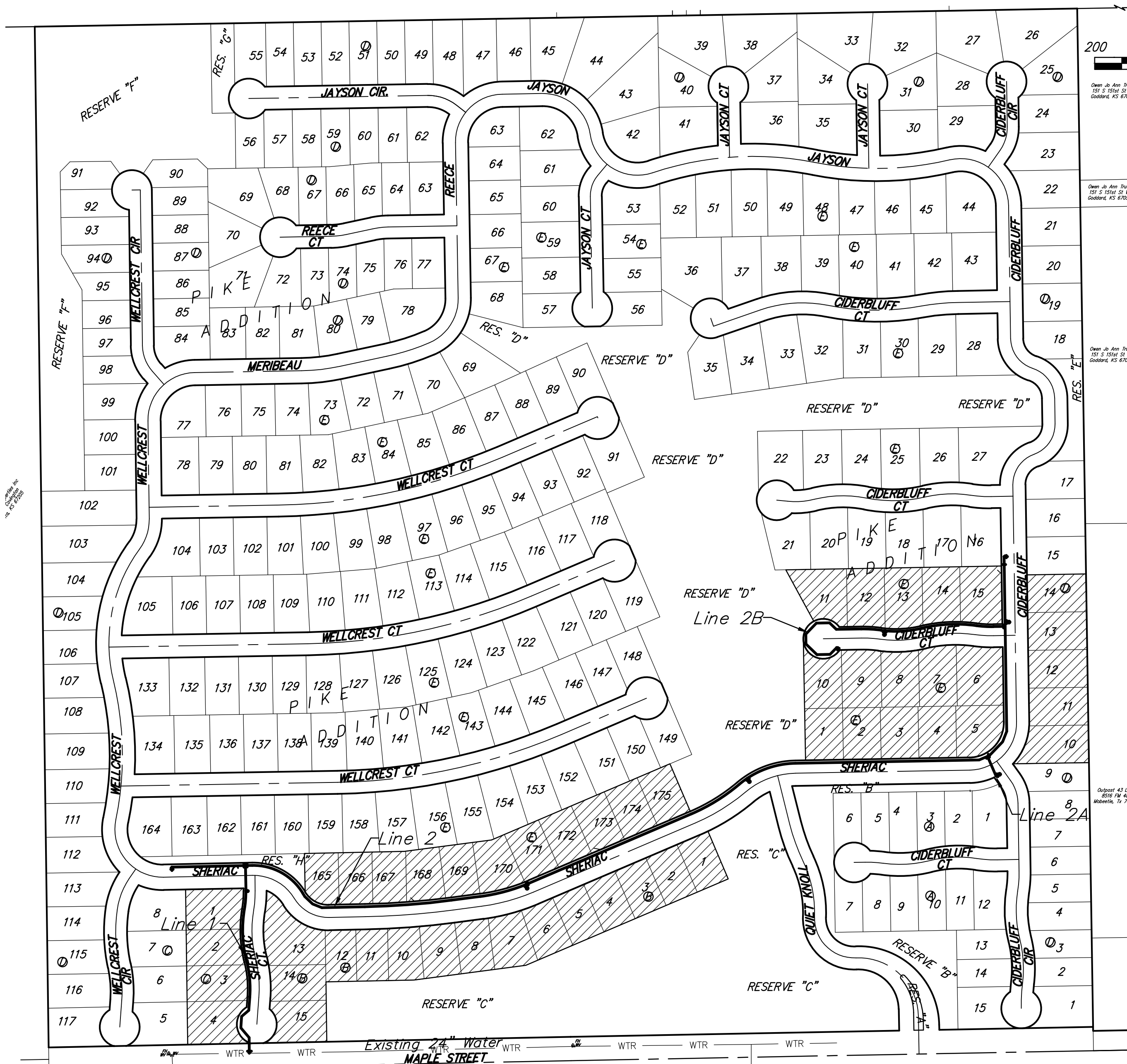
Gary Janzen, P.E. City Engineer  
Project Number  
448-90952  
O.C.A. Number  
735634



Vicinity Map

## Sheet Index

Title Sheet	1
Std. Water Assembly Detail	2
Miscellaneous Water Details	3
Line 1	4
Line 2	5-8
Line 2A-2B	9
Erosion Control Plan	10-11
Erosion Control BMP Details	12-16
Coordinate Sheet	17-18
Copy of Plat	19



Open to Ann Street  
20' ± Street R/W  
Corner, KS 67052

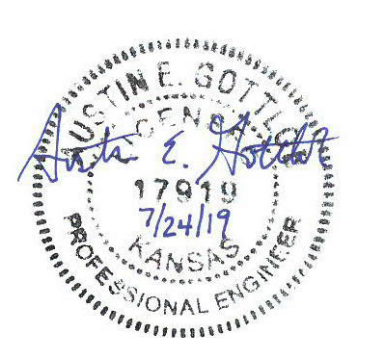
Open to Ann Street  
20' ± Street R/W  
Corner, KS 67052

Open to Ann Street  
20' ± Street R/W  
Corner, KS 67052

Open to Ann Street  
20' ± Street R/W  
Corner, KS 67052

Open to Ann Street  
20' ± Street R/W  
Corner, KS 67052

Open to Ann Street  
20' ± Street R/W  
Corner, KS 67052



July 2019



Baughman Company, P.A. 315 Ellis St. Wichita, KS 67211 P 316-262-7271 F 316-262-0143  
ENGINEERING | SURVEYING | PLANNING | LANDSCAPE ARCHITECTURE