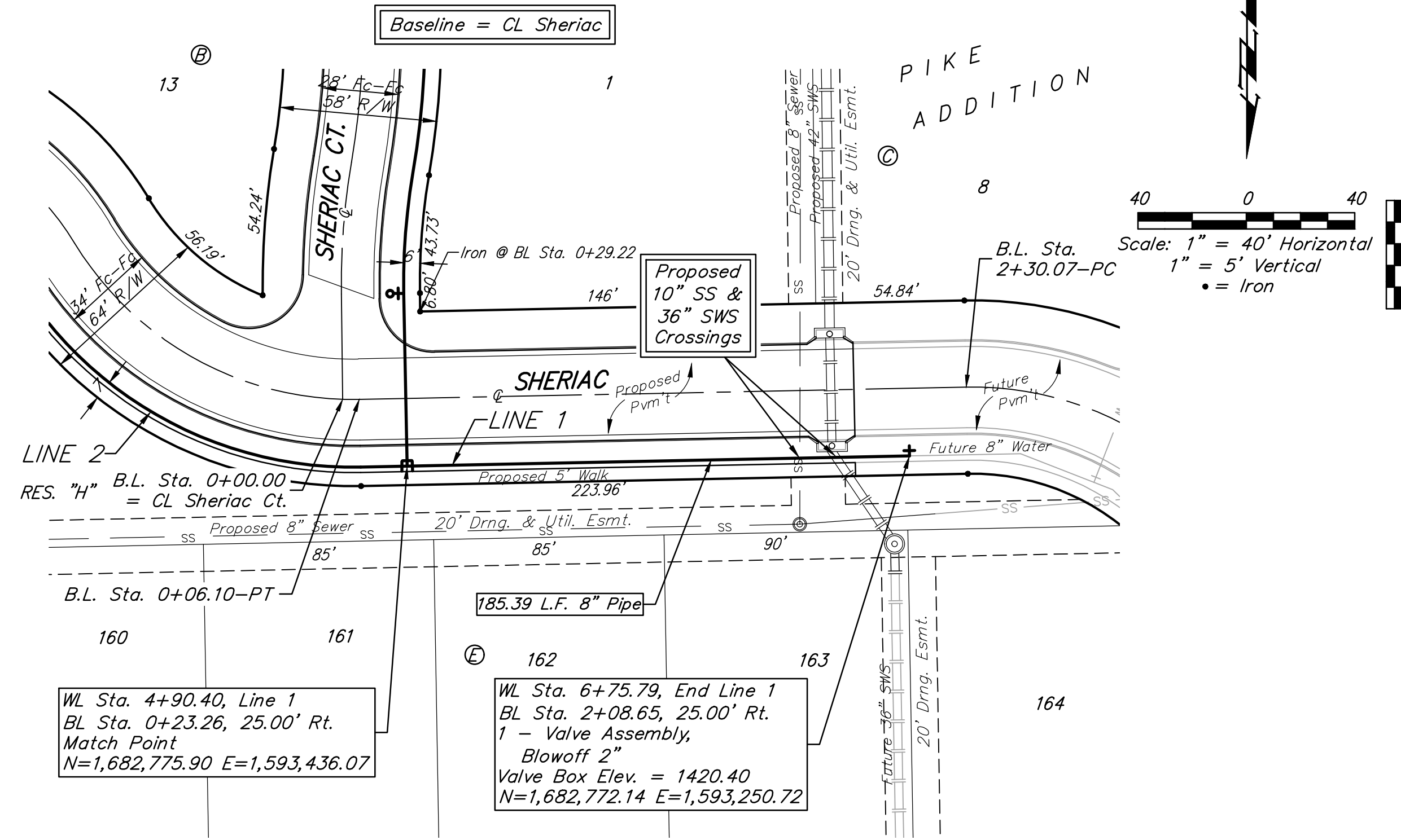
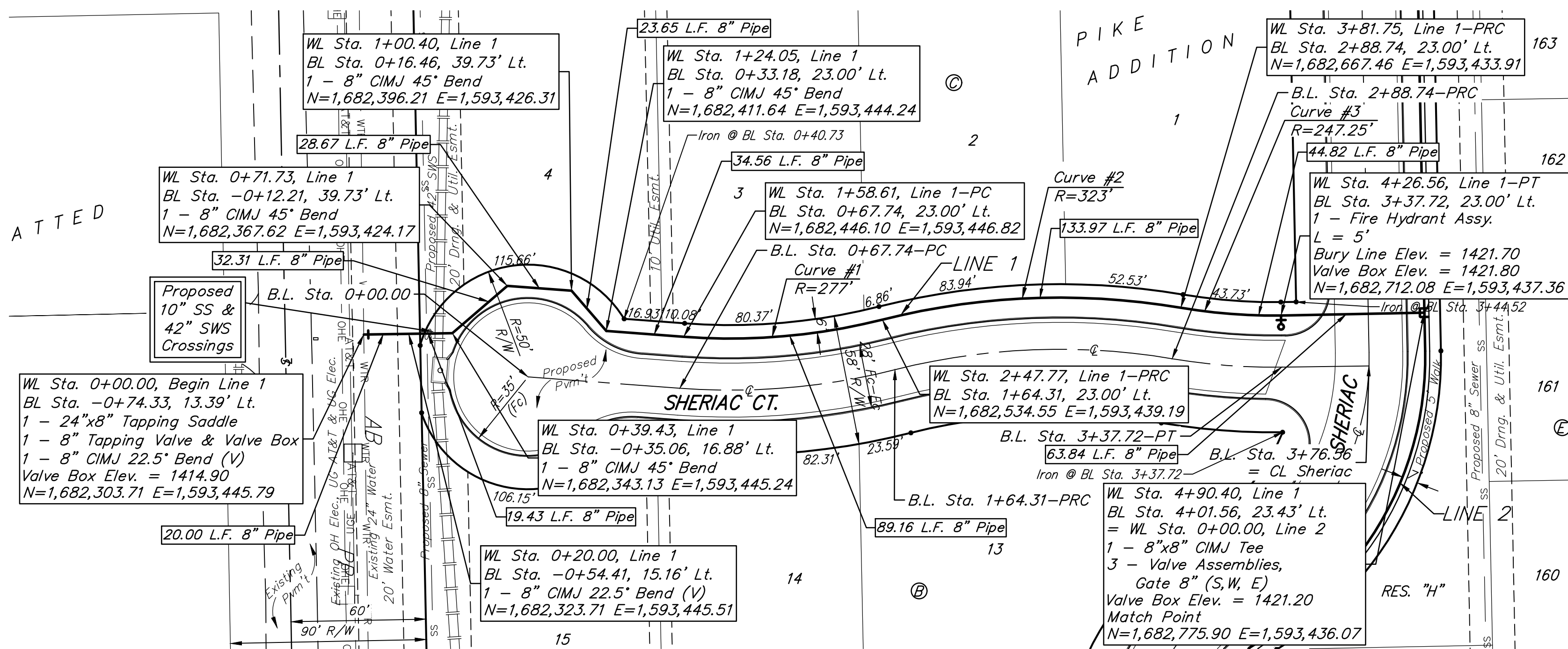


**BENCHMARK:**  
 BM #1: City of Wichita disc top of headwall of RCBC 660'± east of the SE Cor. of the SE1/4, SEC. 22, TWP. 27-S, R-2-W. Elev. = 1410.27 NAVD88  
 BM #2: 60d step nail in utility pole 28' east of  $\angle$  162nd St. W. and 26' north of  $\angle$  of Maple. Elev. = 1417.99 NAVD88

Baseline = CL Sheriac Ct.



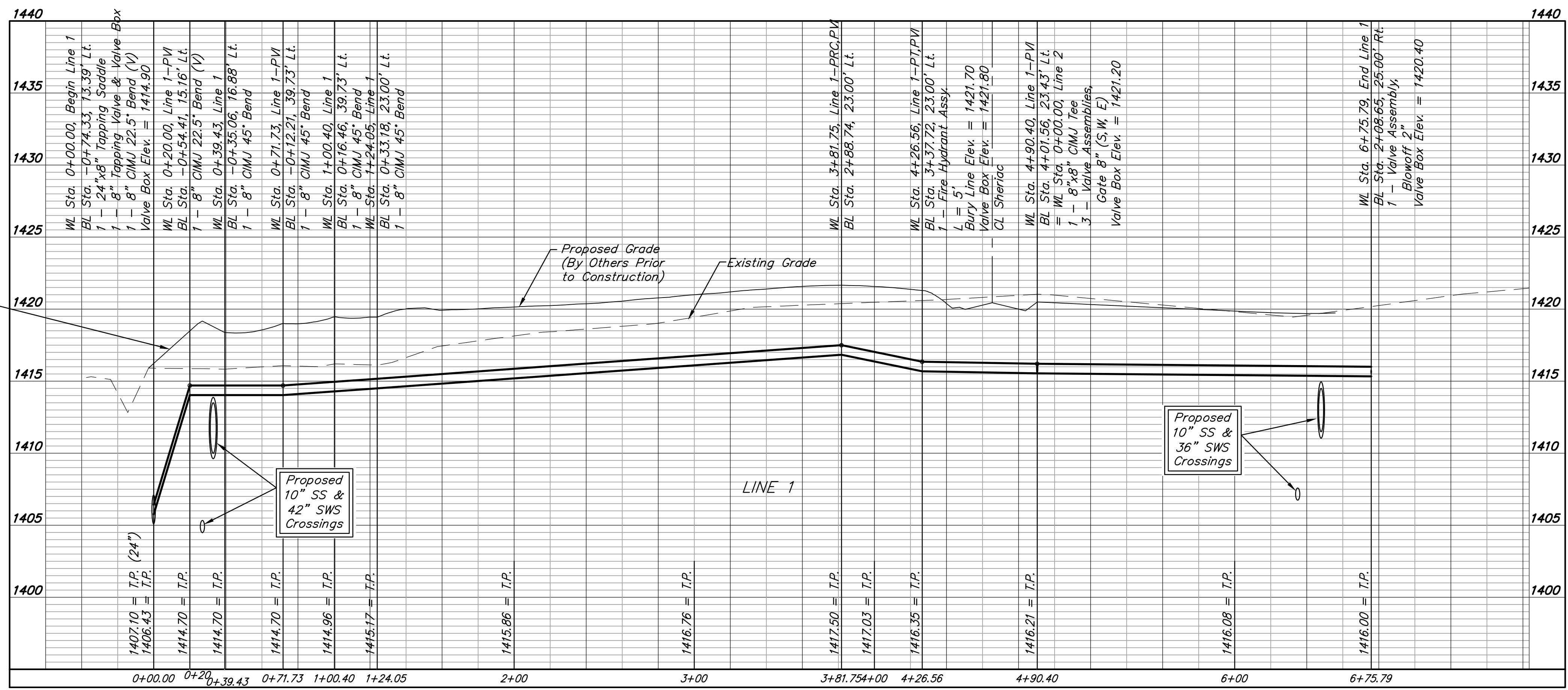
Scale: 1" = 40' Horizontal  
 1" = 5' Vertical  
 • = Iron



For radii under 300', contractor shall use short pipe lengths.

Install protective fill as necessary to ensure 3' of cover over proposed water line.

DEPTH UNKNOWN  
 Contractor to Verify Depth & Location of Existing Water Line Prior to Construction.



**Curve #1**  
 Curve Data Based on Waterline  
 Rad. = 277' Delta = 18°26'34" Tangent = 44.97'  
 Arc = 89.16' L.C. = 88.78' Def./Ft. = 6.20551 Min.

Station	Arc	8' Left	Defl.	Total Defl.
1+58.61	-	-	0°00'00"	0°00'00"
1+75.00	16.39'	15.91'	1°41'42"	1°41'42"
2+00.00	25.00'	24.27'	2°35'09"	4°16'51"
2+25.00	25.00'	24.27'	2°35'08"	6°51'59"
2+47.77	22.77'	22.11'	2°21'18"	9°13'17"

**Curve #2**  
 Curve Data Based on Waterline  
 Rad. = 323' Delta = 23°45'55" Tangent = 67.96'  
 Arc = 133.98' L.C. = 133.02' Def./Ft. = 5.32138 Min.

Station	Arc	8' Left	Defl.	Total Defl.
2+47.77	-	-	0°00'00"	0°00'00"
2+50.00	2.23'	2.29'	0°11'52"	0°11'52"
2+75.00	25.00'	25.61'	2°13'02"	2°24'54"
3+00.00	25.00'	25.61'	2°13'02"	4°37'56"
3+25.00	25.00'	25.61'	2°13'02"	6°50'58"
3+50.00	25.00'	25.61'	2°13'02"	9°04'00"
3+75.00	25.00'	25.61'	2°13'02"	11°17'02"
3+81.75	6.75'	6.92'	0°35'56"	11°52'58"

**Curve #3**  
 Curve Data Based on Waterline  
 Rad. = 247.25' Delta = 10°23'07" Tangent = 22.47'  
 Arc = 44.81' L.C. = 44.75' Def./Ft. = 6.95288 Min.

Station	Arc	8' Left	Defl.	Total Defl.
3+81.75	-	-	0°00'00"	0°00'00"
4+00.00	18.25'	17.66'	2°06'53"	2°06'53"
4+25.00	25.00'	24.18'	2°53'50"	5°00'43"
4+26.56	1.56'	1.51'	0°10'51"	5°11'34"

Baughman Company, P.A.  
 ENGINEERING ARCHITECTURE  
 17019  
 7/24/17  
 PROFESSIONAL ENGINEER

PIKE ADDITION - PH. 1A  
**LINE 1**  
 WATER DISTRIBUTION SYSTEM