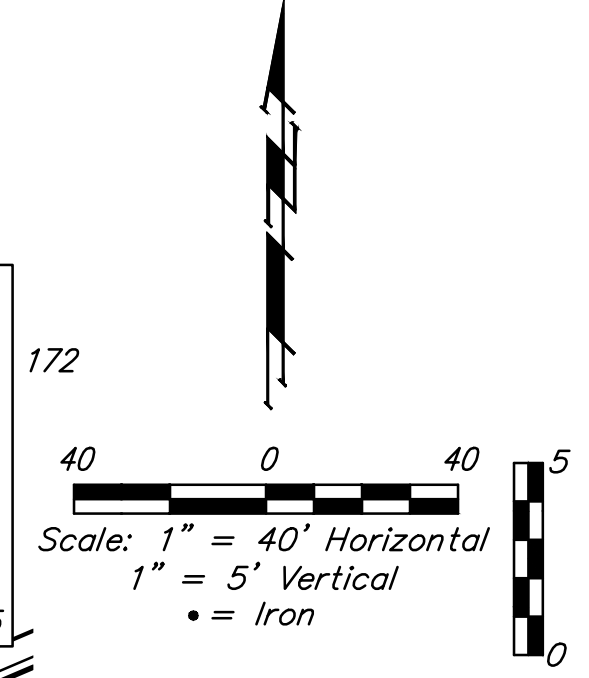
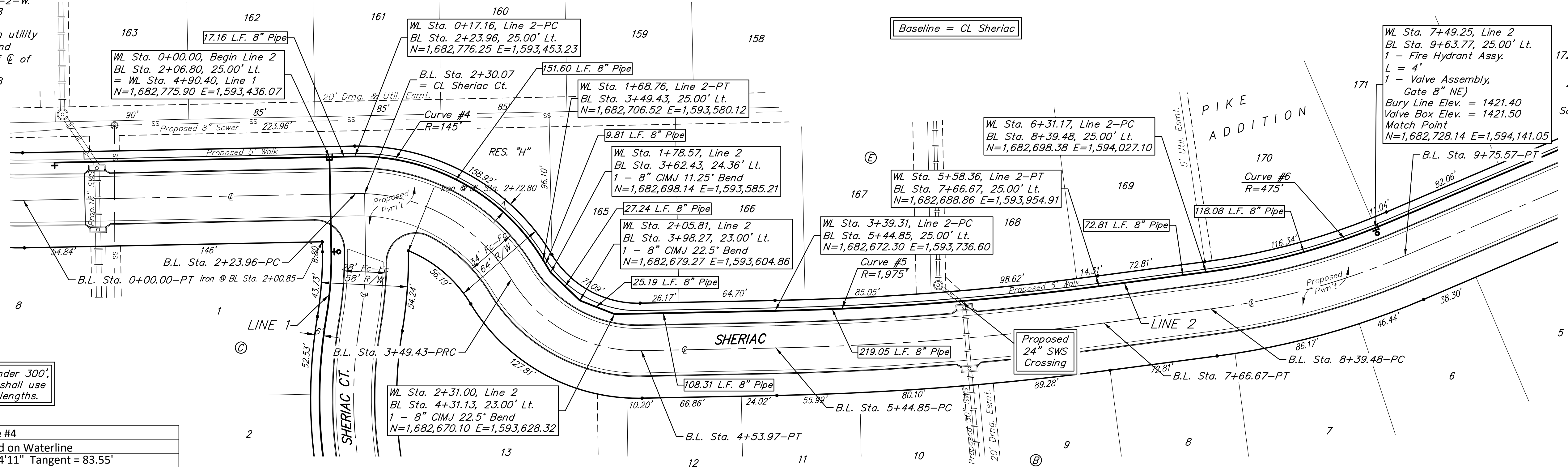


BENCHMARK:
 BM #1: City of Wichita disc top of headwall of RCBC 660'± east of the SE Cor. of the SE 1/4, SEC. 22, TWP. 27-S, R-2-W. Elev. = 1410.27 NAVD88

BM #2: 60d step nail in utility pole 28' east of & 162nd St. W. and 26' north of & of Maple. Elev. = 1417.99 NAVD88



For radii under 300', contractor shall use short pipe lengths.

Curve #4
 Curve Data Based on Waterline
 Rad. = 145' Delta = 59°54'11" Tangent = 83.55'
 Arc = 151.60' L.C. = 144.79' Def./Ft. = 11.85417 Min.

Station	Arc	Chord Lengths	8' Left	Defl.	Total Defl.
0+17.16	-	-	-	0°00'00"	0°00'00"
0+25.00	7.84'	8.27'	26.35'	1°32'56"	1°32'56"
0+50.00	25.00'	26.35'	4°56'21"	6°29'17"	6°29'17"
0+75.00	25.00'	26.35'	4°56'22"	11°25'39"	11°25'39"
1+00.00	25.00'	26.35'	4°56'21"	16°22'00"	16°22'00"
1+25.00	25.00'	26.35'	4°56'21"	21°18'21"	21°18'21"
1+50.00	25.00'	26.35'	4°56'21"	26°14'42"	26°14'42"
1+68.76	18.76'	19.78'	3°42'23"	29°57'05"	29°57'05"

Curve #5
 Curve Data Based on Waterline
 Rad. = 1975' Delta = 62°21'17" Tangent = 109.64'
 Arc = 219.05' L.C. = 218.94' Def./Ft. = 0.87031 Min.

Station	Arc	Chord Lengths	8' Left	Defl.	Total Defl.
3+39.31	-	-	-	0°00'00"	0°00'00"
3+50.00	10.69'	10.65'	0°09'18"	0°09'18"	0°09'18"
3+75.00	25.00'	24.90'	0°21'46"	0°31'04"	0°31'04"
4+00.00	25.00'	24.90'	0°21'45"	0°52'49"	0°52'49"
4+25.00	25.00'	24.90'	0°21'46"	1°14'35"	1°14'35"
4+50.00	25.00'	24.90'	0°21'45"	1°36'20"	1°36'20"
4+64.00	14.00'	13.94'	0°12'11"	1°48'31"	1°48'31"
4+76.00	12.00'	11.95'	0°10'27"	1°58'58"	1°58'58"
5+00.00	24.00'	23.90'	0°20'53"	2°19'51"	2°19'51"
5+25.00	25.00'	24.90'	0°21'45"	2°41'36"	2°41'36"
5+50.00	25.00'	24.90'	0°21'46"	3°03'22"	3°03'22"
5+58.36	8.36'	8.33'	0°07'17"	3°10'39"	3°10'39"

Curve #6
 Curve Data Based on Waterline
 Rad. = 475' Delta = 15°35'41" Tangent = 65.04'
 Arc = 129.28' L.C. = 128.89' Def./Ft. = 3.61882 Min.

Station	Arc	Chord Lengths	8' Left	Defl.	Total Defl.
6+31.17	-	-	-	0°00'00"	0°00'00"
6+50.00	18.83'	18.51'	1°08'09"	1°08'09"	1°08'09"
6+75.00	25.00'	24.58'	1°30'28"	2°38'37"	2°38'37"
7+00.00	25.00'	24.58'	1°30'28"	4°09'05"	4°09'05"
7+25.00	25.00'	24.58'	1°30'28"	5°39'33"	5°39'33"
7+49.25	24.25'	23.84'	1°27'46"	7°07'19"	7°07'19"
7+60.45	11.20'	11.01'	0°40'31"	7°47'50"	7°47'50"

