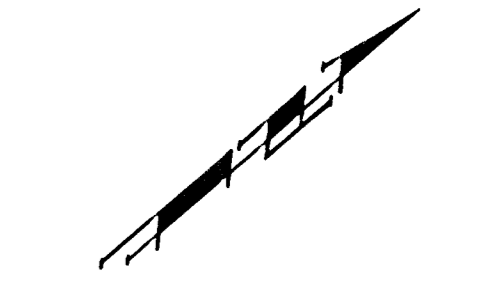


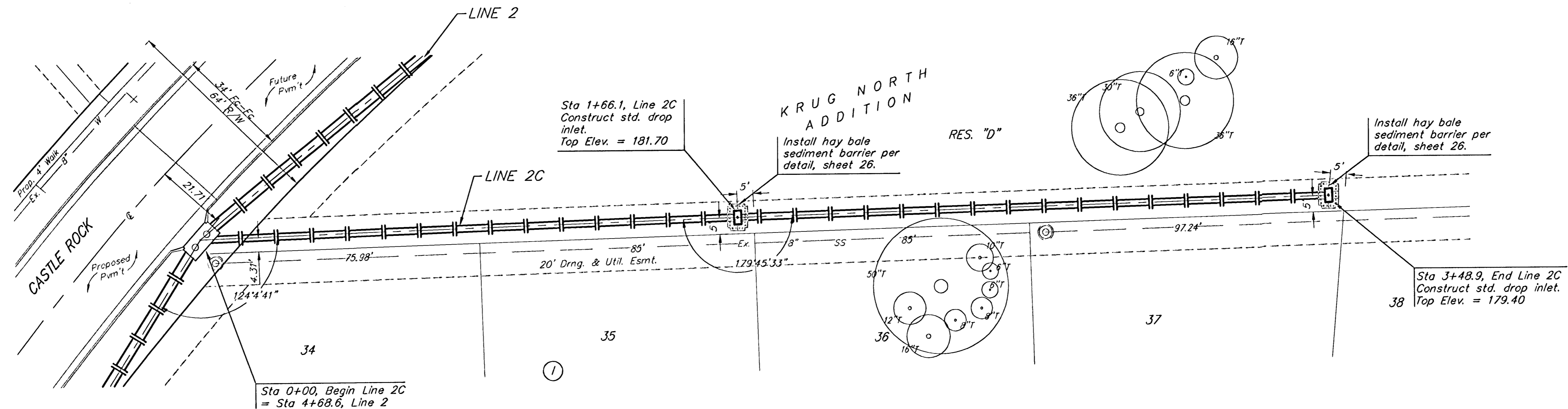
**BENCHMARKS:**

"□" Cut in middle of N headwall of RCBC on 21st St. North. 1004.3' W & 22.1' N of SE Cor., SE 1/4, Sec. 2, T-27-S, R-2-E. Elev. = 173.23 City Datum

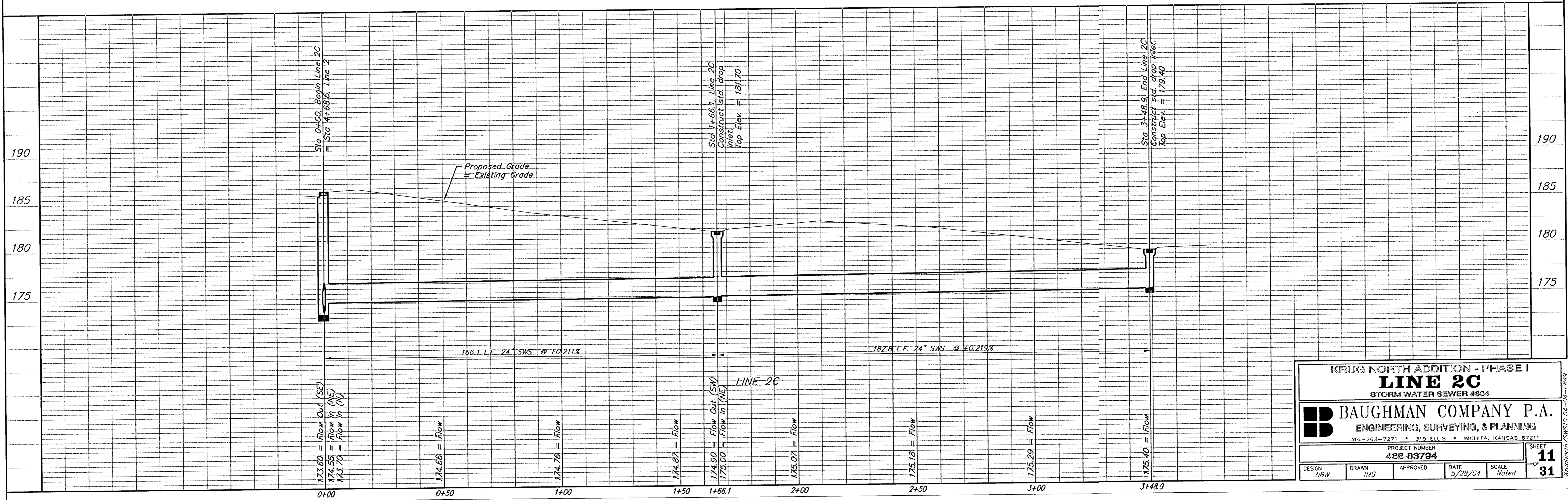
RR spike in N. face of power pole 840.0' west of C.L. of Castle Rock and 48.7' south of C.L. of 21st St. N. Elev. = 182.03 City Datum



Scale: 1" = 20' Horizontal  
1" = 5' Vertical  
• = Iron



Remove trees only as necessary for storm sewer construction. Cost of removal to be incidental to lump sum bid item "Site Clearing & Restoration".



**KRUG NORTH ADDITION - PHASE I**  
**LINE 2C**  
STORM WATER SEWER #604

**BAUGHMAN COMPANY P.A.**  
ENGINEERING, SURVEYING, & PLANNING  
316-262-7271 • 315 ELLIS • WICHITA, KANSAS 67211

PROJECT NUMBER  
**488-83794**

DESIGN NBW	DRAWN TMS	APPROVED	DATE 5/28/04
SCALE Noted			SHEET <b>11</b> OF <b>31</b>