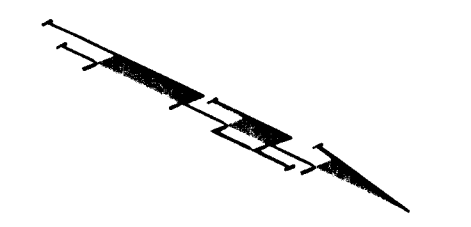


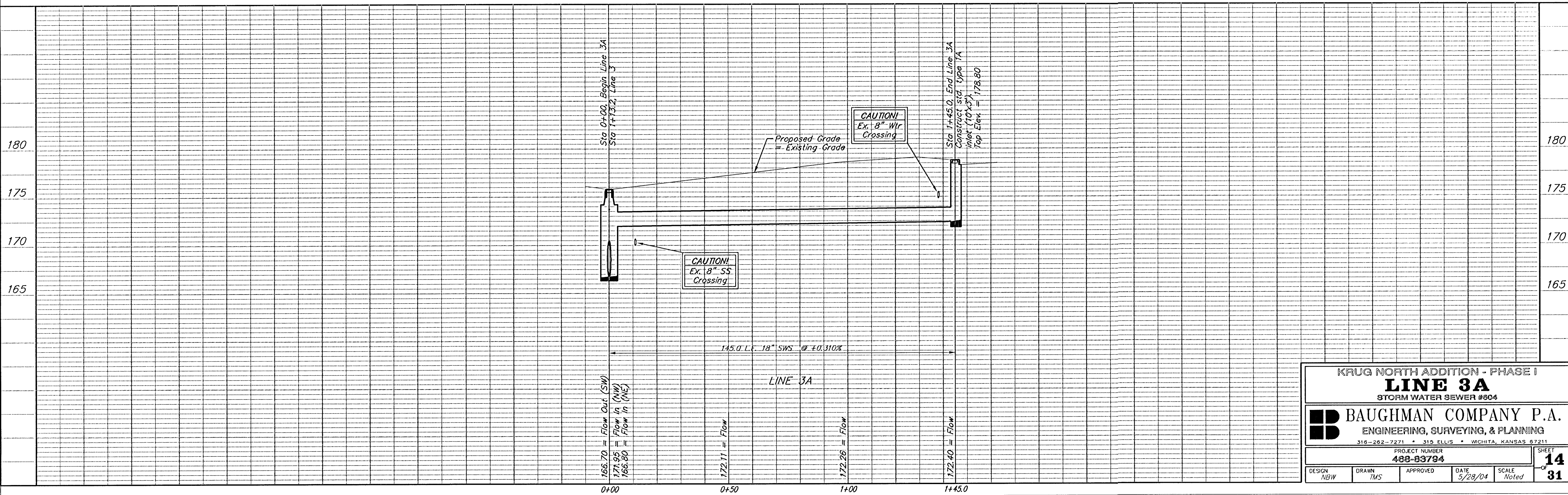
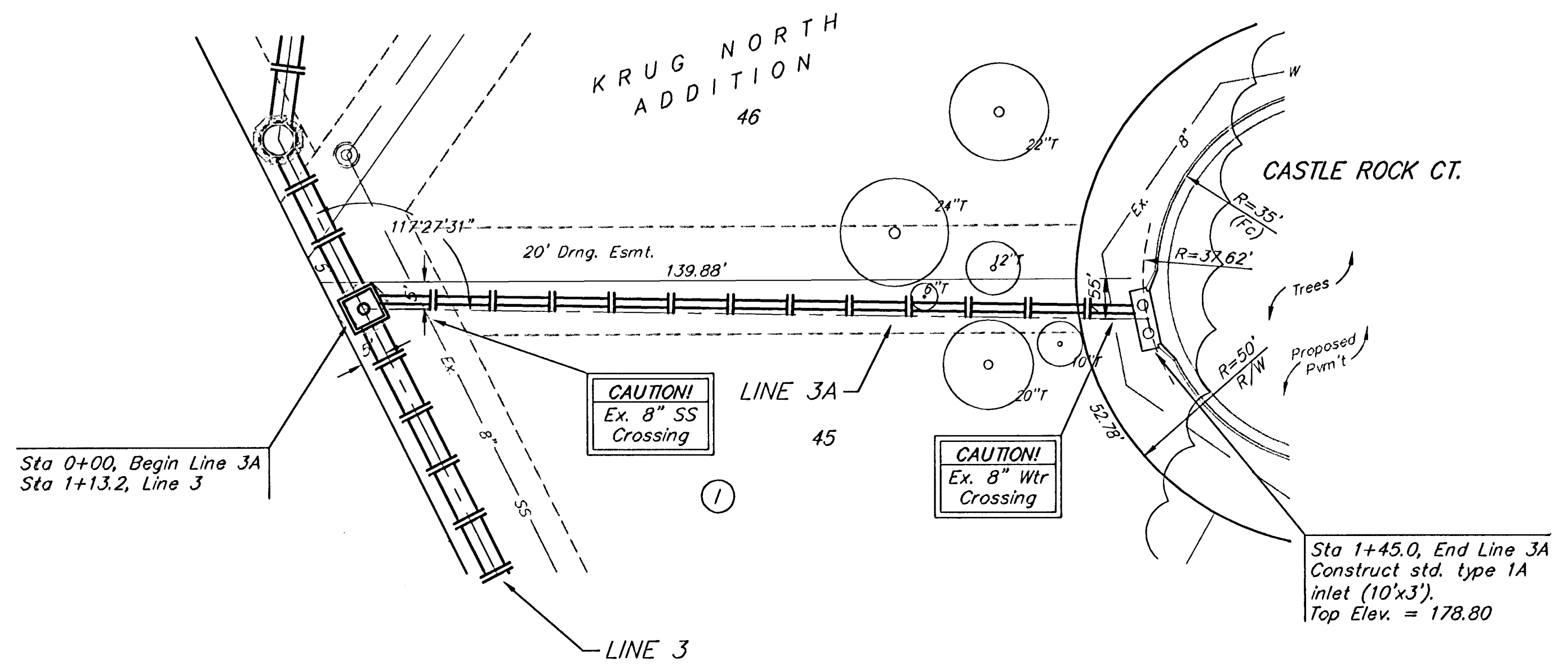
BENCHMARKS:

"□" Cut in middle of N headwall of RCBC on 21st St. North. 1004.3' W & 22.1' N of SE Cor., SE1/4, Sec. 2, T-27-S, R-2-E. Elev. = 173.23 City Datum

RR spike in N. face of power pole 840.0' west of C.L. of Castle Rock and 48.7' south of C.L. of 21st St. N. Elev. = 182.03 City Datum



Scale: 1" = 20' Horizontal
1" = 5' Vertical
• = Iron



KRUG NORTH ADDITION - PHASE I LINE 3A STORM WATER SEWER #804				
BAUGHMAN COMPANY P.A. ENGINEERING, SURVEYING, & PLANNING 316-262-7271 • 315 ELLIS • WICHITA, KANSAS 67211				
PROJECT NUMBER 488-83784				
DESIGN NBW	DRAWN TMS	APPROVED	DATE 9/28/04	SCALE Noted
				SHEET 14 OF 31