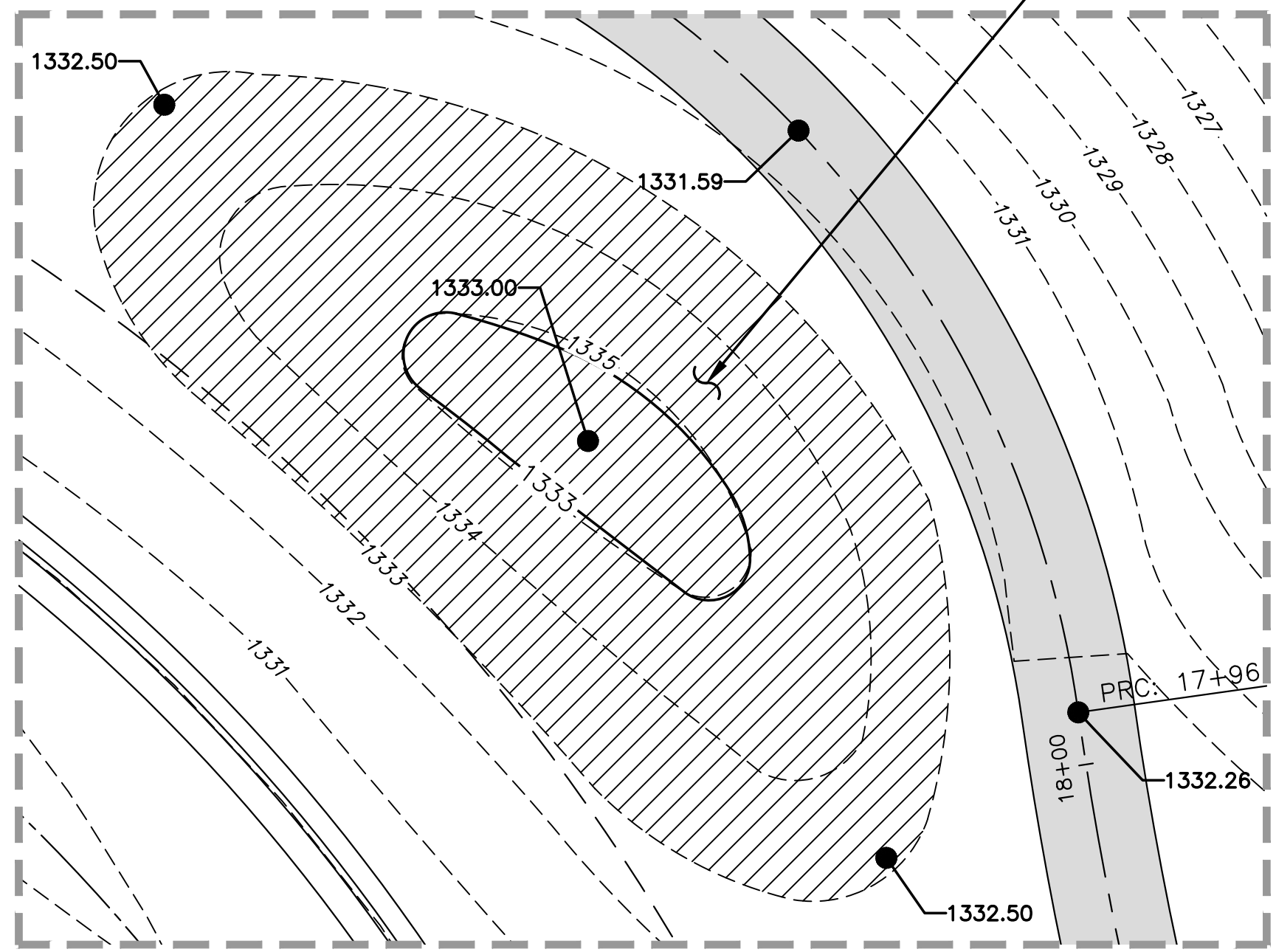
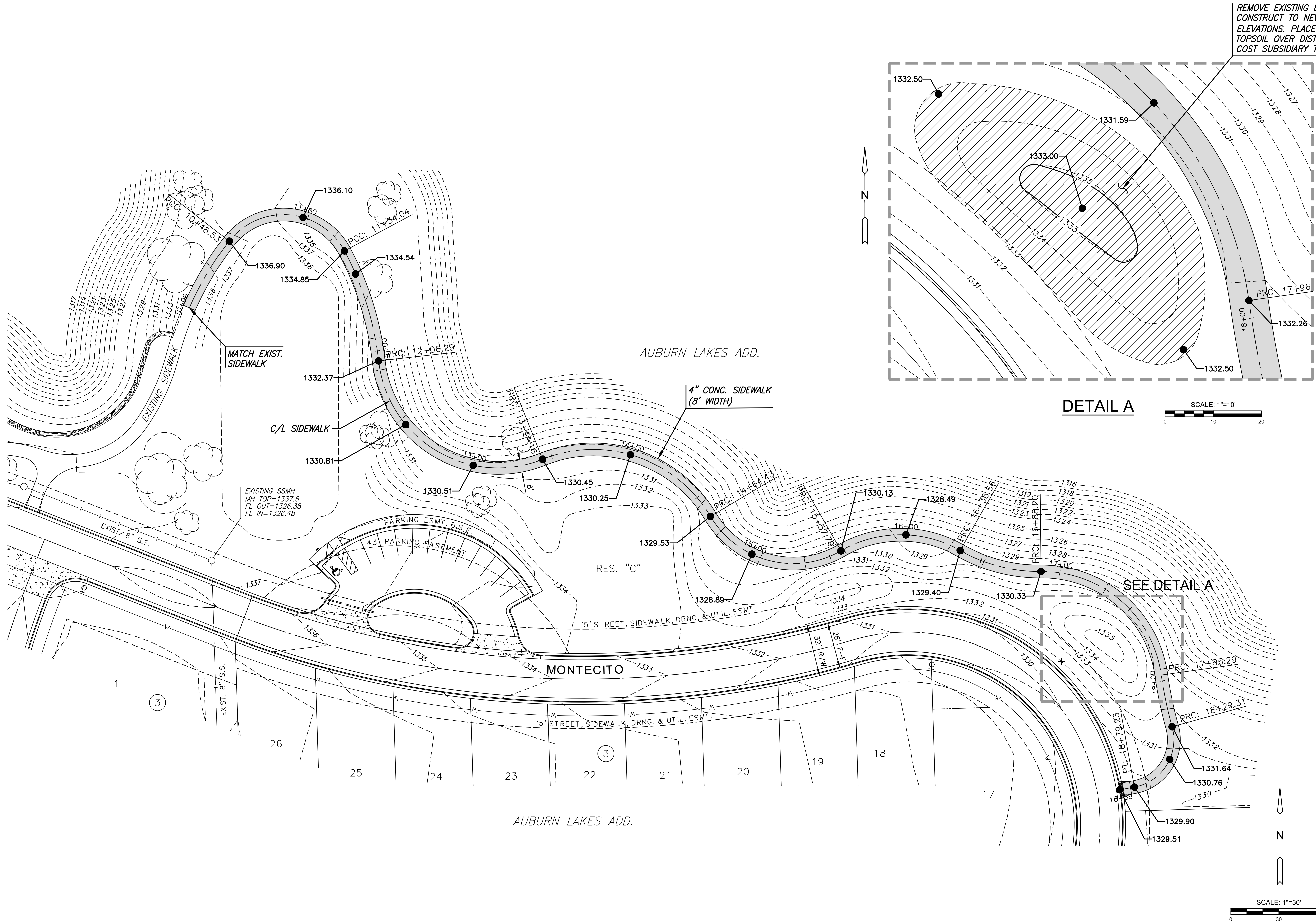


PLOTTED: Tuesday, July 30, 2019 @ 11:30AM

J:\PROJECTS\2018\1601010221_PERFECTION_AUBURN_LAKES_16221_CAD\SHOTS\05_CIVIL\PAV\PHASE 2\16221-05-50264-PH2.DWG



REMOVE EXISTING BERM AND CONSTRUCT TO NEW SPOT ELEVATIONS. PLACE 6\"/>

DETAIL A
SCALE: 1"=10'

SCALE: 1"=30'



PAVING & INCIDENTAL DRAINAGE FOR
AUBURN LAKES ADDITION
PHASE 2

©2019 MKEC Engineering All Rights Reserved
www.mkec.com
These drawings and their contents, including, but not limited to, all concepts, designs, & ideas are the exclusive property of MKEC Engineering (MKEC), and may not be used or reproduced in any way without the express consent of MKEC.

SIDEWALK PLAN (GRADING)

PROJECT NO.	472-85328	
DATE	JULY 2019	
SCALE	AS SHOWN	
DESIGNED	DRAWN	CHECKED
DFL	JWC	GJA

NO.	REVISION	DATE