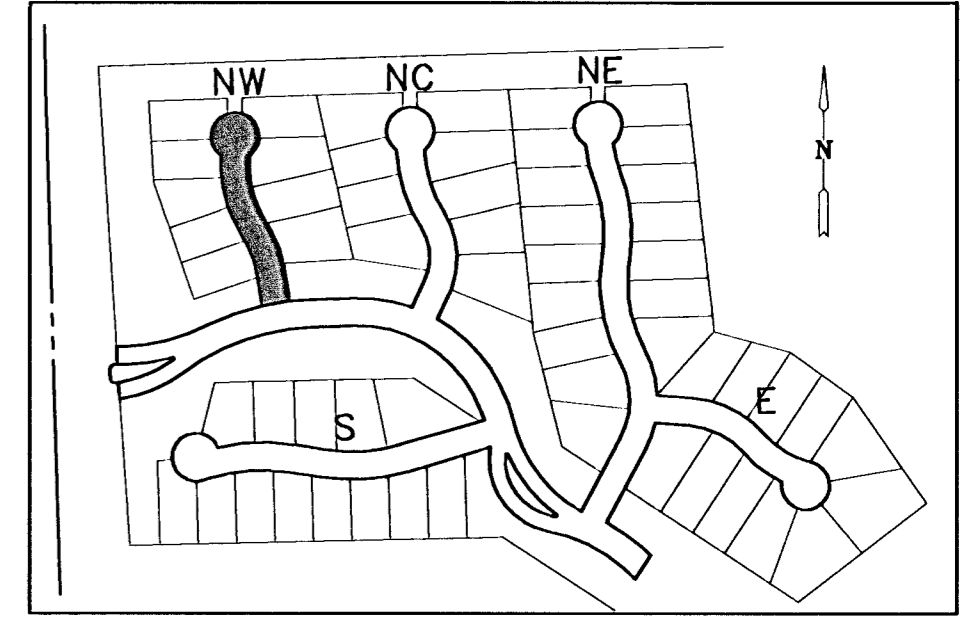
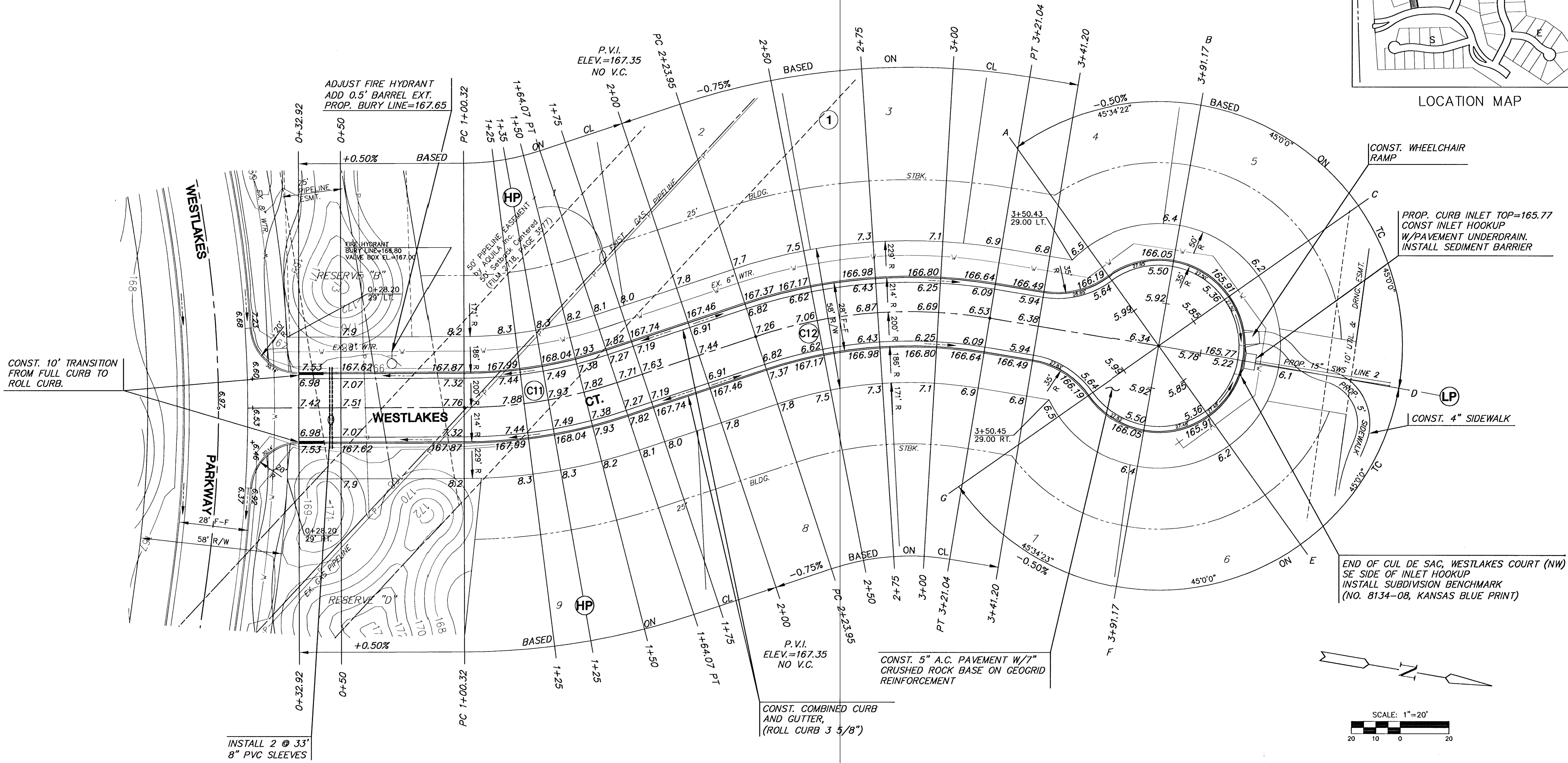


FOX RIDGE ADDITION



LOCATION MAP



CONST. 10' TRANSITION FROM FULL CURB TO ROLL CURB.

INSTALL 2 @ 33' 8" PVC SLEEVES

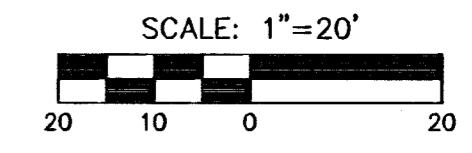
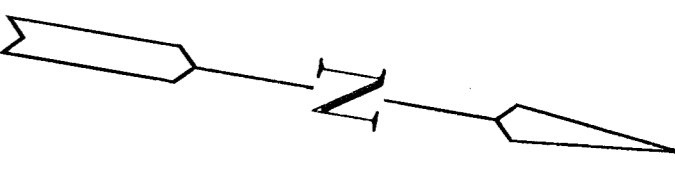
CONST. COMBINED CURB AND GUTTER, (ROLL CURB 3 5/8")

CONST. 5" A.C. PAVEMENT W/7" CRUSHED ROCK BASE ON GEOGRID REINFORCEMENT

PROP. CURB INLET TOP=165.77
CONST INLET HOOKUP W/PAVEMENT UNDERDRAIN. INSTALL SEDIMENT BARRIER

CONST. 4" SIDEWALK

END OF CUL DE SAC, WESTLAKES COURT (NW) SE SIDE OF INLET HOOKUP
INSTALL SUBDIVISION BENCHMARK (NO. 8134-08, KANSAS BLUE PRINT)



FOX RIDGE ADDITION

- NOTE:
1. TOP OF CURB ELEVATIONS SHOWN ARE FOR FULL CURB. CONSTRUCT CURB AS NOTED.
 2. CONTRACTOR SHALL REMOVE ALL TREES WITHIN ROAD RIGHT-OF-WAY.
 3. CURVE DATA FOR CURVES LABELED (C#) MAY BE FOUND ON SHEET 4.

G:\CIVIL\99118\dwg\PAV\PH_8\99118E1.dwg



FOX RIDGE ADDITION		
PROJECT NAME		
WESTLAKES COURT (NW) - PHASE 8		
SHEET TITLE		
SS DESIGN BY.	DM DRAWN BY.	CA CHECKED BY.
SEPTEMBER 2004 DATE	99118E1 JOB NO.	12 / 50 SHEET/OF