

# FINAL PLAT

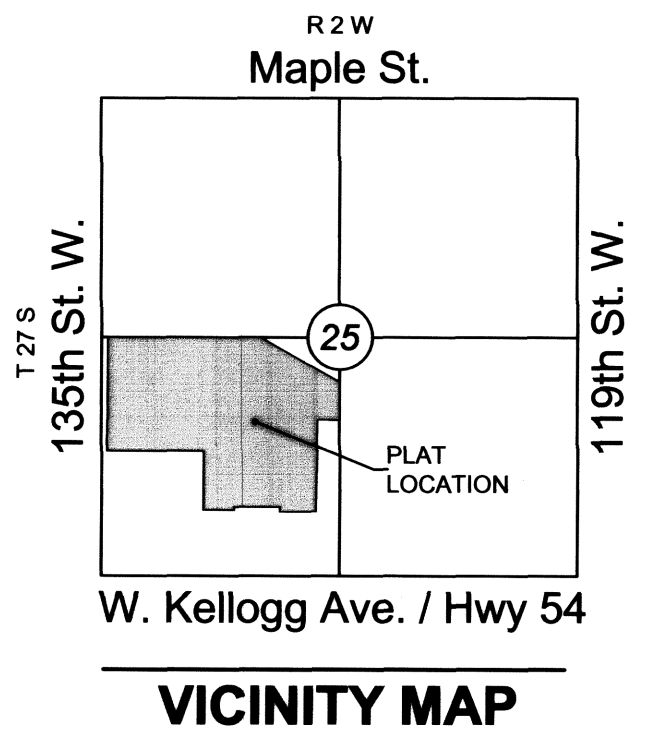
## AUBURN LAKES ADDITION

### AN ADDITION TO WICHITA, SEDGWICK COUNTY, KANSAS

lying within in a portion of the Southwest Quarter of Section 25,  
Township 27 South, Range 2 West of the 6th Principal Meridian

NW cor., SW ¼, Sec. 25,  
T27S, R2W, 6th P.M.  
Fnd. 1" Iron Pipe in Thimble

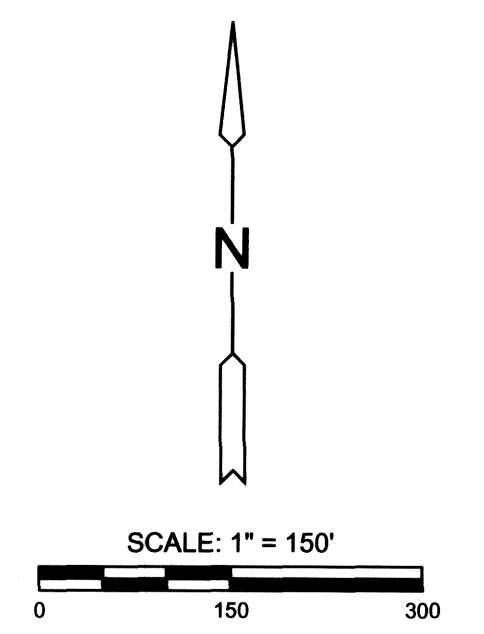
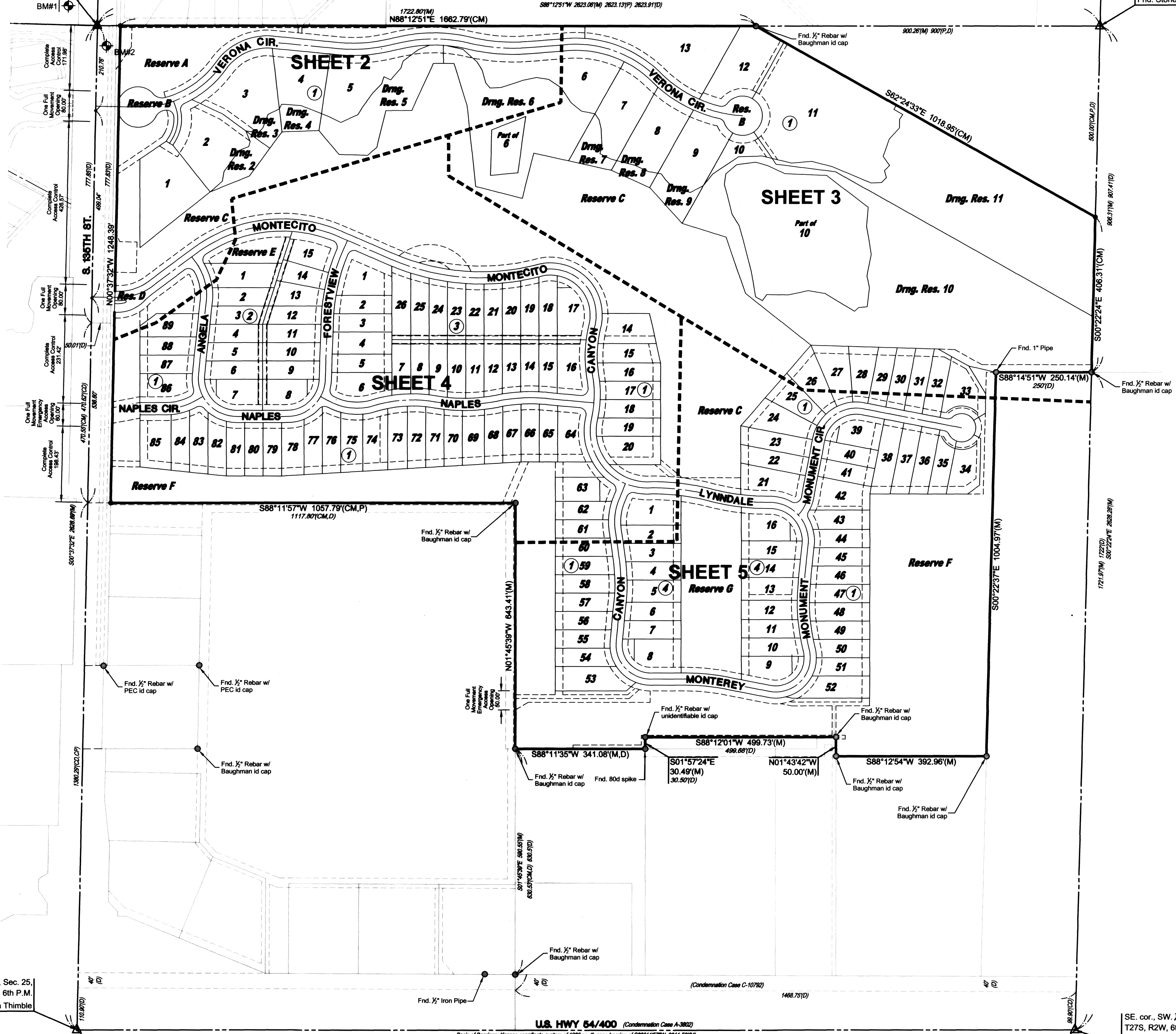
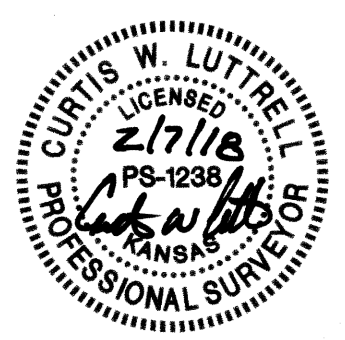
NE cor., SW ¼, Sec. 25,  
T27S, R2W, 6th P.M.  
Fnd. Stone



#### BENCHMARKS

- BMM1 Square Cut on east nose of center island, 50 feet west of 135th Street West and Onewood Street intersection.  
Elev.=1350.35 NAVD88
- BMM2 Square Cut on northeast corner curb inlet, east side of 135th Street West, 33 feet south of NW ¼, Sec. 25, T27S, R2W of the 6th P.M.  
Elev.=1346.29 NAVD88

LOT(S)	BLOCK	MINIMUM PAD ELEVATIONS LOWEST OPENINGS #inclusive	ELEVATION NAVD 88
1	1	1	1342.5
2	1	1	1339.5
3-5	1	1	1337.2
6-9	1	1	1333.2
10	1	1	1328.0
11	1	1	1326.5
14	1	1	1330.2
15-28	1	1	1327.9
29	1	1	1327.5
30	1	1	1327.0
31-38	1	1	1326.6
41-43	1	1	1326.6
44-47	1	1	1326.7
48-52	1	1	1326.8
53	1	1	1331.5
89	1	1	1342.5
1	2	1	1341.0
15	2	1	1337.2
1	3	1	1337.2
17-26	3	1	1333.2
1-16	4	1	1329.2



Basis of Bearings: Kansas coordinate system of 1983 south zone bearing of S88°11'57"W on the south line of the Southwest Quarter, Section 25, Township 27 South, Range 2 West of the 6th Principal Meridian.  
This plat is surveyed and platted on NAD83 using Kansas state plane south zone coordinates, modified to the surface, having a combined adjustment scale factor of 1.000120014401728

#### LEGEND

- Date of Survey: 9/17/17
- △ = Section Corner Monument Found
  - = Found monument (see annotation for type)
  - = Set ½" rebar w/ MKEC CLS 39 id. cap
  - ⊕ = Benchmark
  - (M) = Measured
  - (P) = Platted
  - (D) = Described
  - (CM) = Calculated from Measurement
  - (CP) = Calculated from Plat
  - (CD) = Calculated from Described
  - Dmg. = Drainage
  - Util. = Utility
  - Sdwk. = Sidewalk
  - St. = Street
  - Esmt. = Easement
  - ① = Lot
  - ② = Block



SUB2017-00050 Auburn Lakes Addition