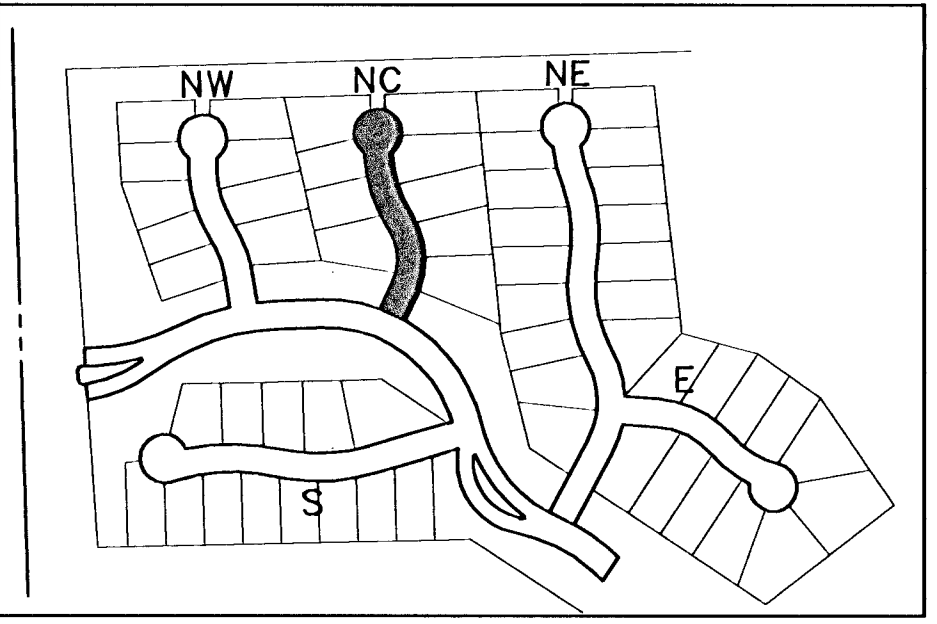
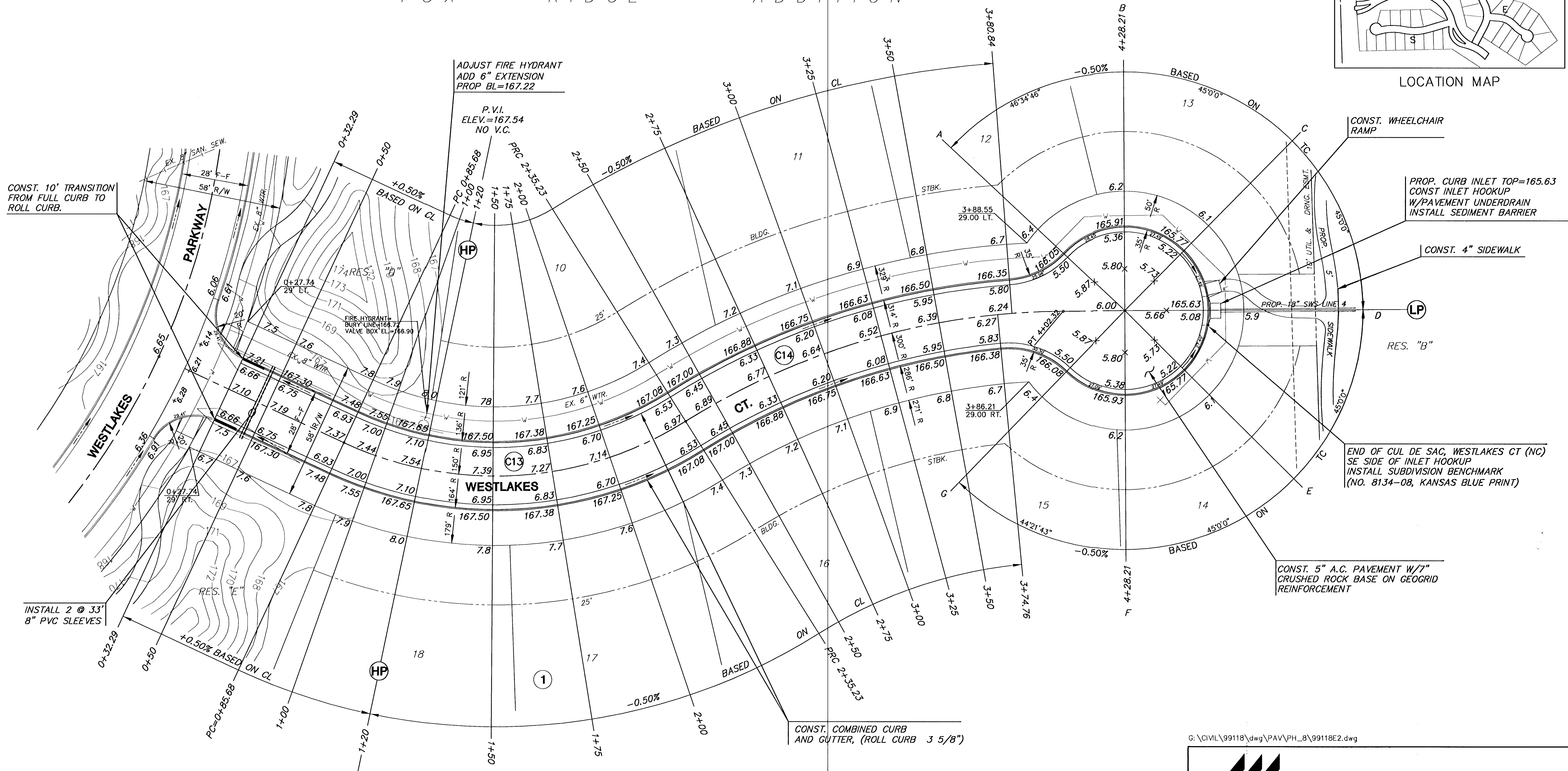


FOX RIDGE ADDITION



LOCATION MAP



CONST. 10' TRANSITION FROM FULL CURB TO ROLL CURB.

CONST. WHEELCHAIR RAMP

PROP. CURB INLET TOP=165.63
CONST INLET HOOKUP
W/PAVEMENT UNDERDRAIN
INSTALL SEDIMENT BARRIER

CONST. 4" SIDEWALK

END OF CUL DE SAC, WESTLAKES CT (NC)
SE SIDE OF INLET HOOKUP
INSTALL SUBDIVISION BENCHMARK
(NO. 8134-08, KANSAS BLUE PRINT)

CONST. 5" A.C. PAVEMENT W/7" CRUSHED ROCK BASE ON GEOGRID REINFORCEMENT

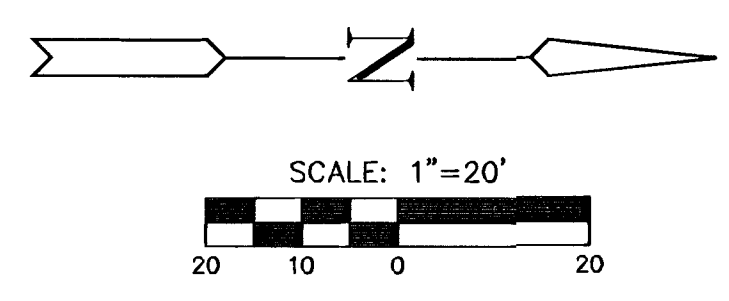
CONST. COMBINED CURB AND GUTTER, (ROLL CURB 3 5/8")

INSTALL 2 @ 33' 8" PVC SLEEVES

- NOTE:
1. TOP OF CURB ELEVATIONS SHOWN ARE FOR FULL CURB. CONSTRUCT CURB AS NOTED.
 2. CONTRACTOR SHALL REMOVE ALL TREES WITHIN ROAD RIGHT-OF-WAY.
 3. CURVE DATA FOR CURVES LABELED (C#) MAY BE FOUND ON SHEET 4.

P.V.I. ELEV.=167.54
NO V.C.

FOX RIDGE ADDITION



G:\CIVIL\99118\dwg\PAV\PH_8\99118E2.dwg



FOX RIDGE ADDITION		
PROJECT NAME		
WESTLAKES COURT (NC) - PHASE 8		
SHEET TITLE		
SS	DM	CA
DESIGN BY:	DRAWN BY:	CHECKED BY:
SEPTEMBER 2004	99118E2	13 / 50
DATE	JOB NO.	SHEET/OF