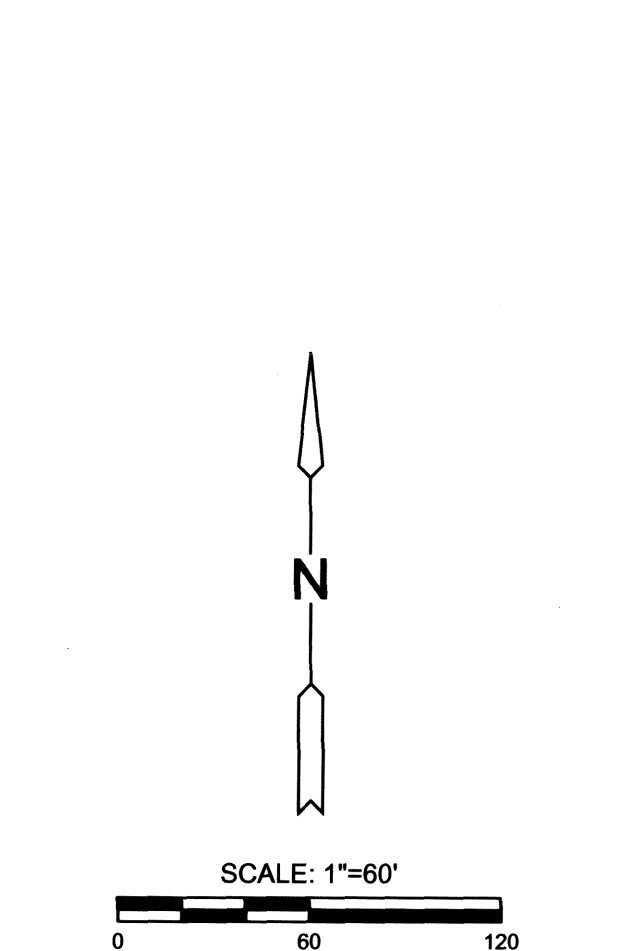
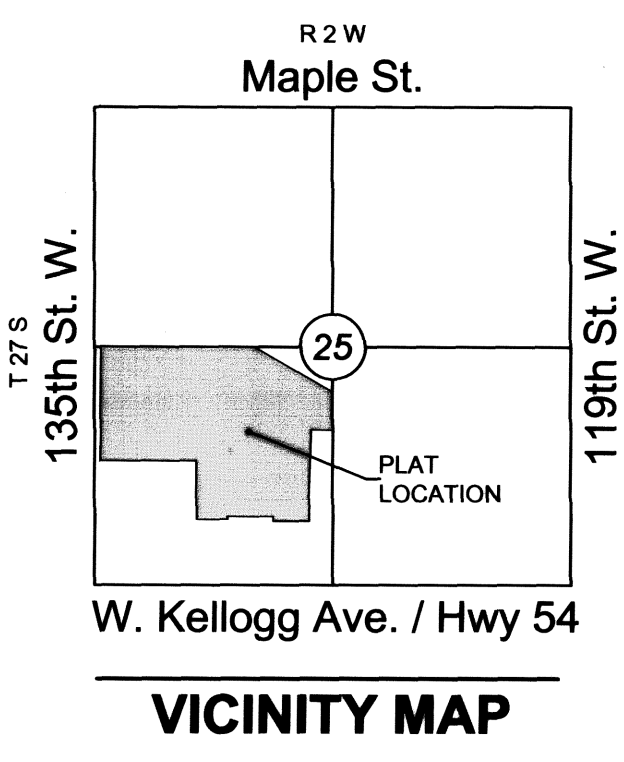


FINAL PLAT

AUBURN LAKES ADDITION

AN ADDITION TO WICHITA, SEDGWICK COUNTY, KANSAS

lying within in a portion of the Southwest Quarter of Section 25,
Township 27 South, Range 2 West of the 6th Principal Meridian



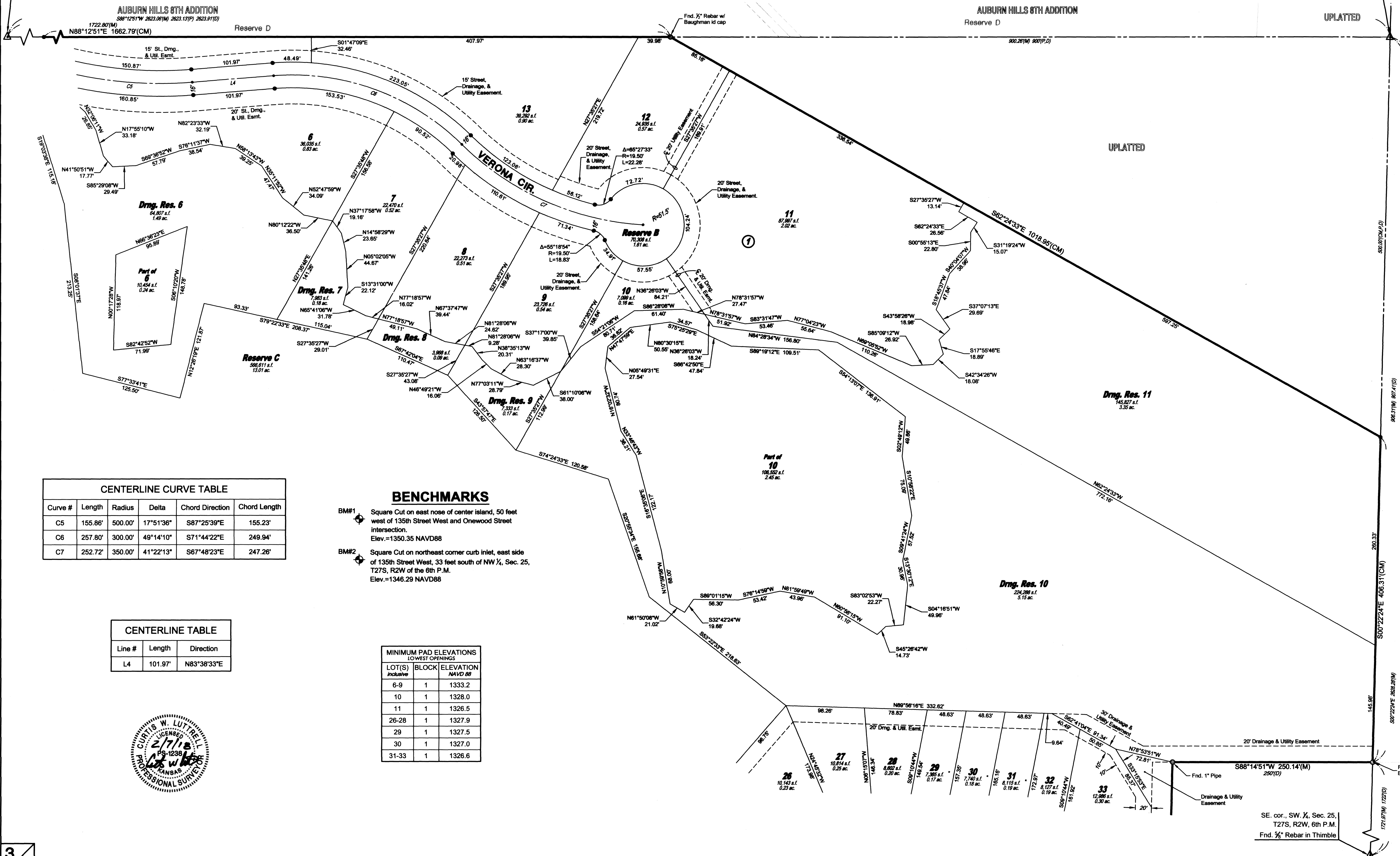
Basis of Bearings: Kansas coordinate system of 1983 south zone bearing of S88°11'57"W on the south line of the Southwest Quarter, Section 25, Township 27 South, Range 2 West of the 6th Principal Meridian. This plat is surveyed and platted on NAD83 using Kansas state plane south zone coordinates, modified to the surface, having a combined adjustment scale factor of 1.000120014401728

LEGEND

- Date of Survey: 9/17/17
- △ = Section Corner Monument Found
 - = Found monument (see annotation for type)
 - = Set 3/4" rebar w/ MKEC CLS 39 id. cap
 - ⊙ = Benchmark
 - (M) = Measured
 - (P) = Platted
 - (D) = Described
 - (CM) = Calculated from Measurement
 - (CP) = Calculated from Plat
 - (CD) = Calculated from Described
 - Dmg. = Drainage
 - Util. = Utility
 - Sdwk. = Sidewalk
 - St. = Street
 - Esmt. = Easement
 - ① = Lot
 - ② = Block

NW cor., SW 1/4, Sec. 25,
T27S, R2W, 6th P.M.
Fnd. 1" Iron Pipe in Thimble

NE cor., SW 1/4, Sec. 25,
T27S, R2W, 6th P.M.
Fnd. Stone



AUBURN HILLS 6TH ADDITION
1722.80(W)
S88°12'51"E 1662.79'(CM)

AUBURN HILLS 6TH ADDITION
Reserve D

UPLATTED

UPLATTED

UPLATTED

UPLATTED

UPLATTED

UPLATTED

UPLATTED

UPLATTED

UPLATTED

UPLATTED

CENTERLINE CURVE TABLE

Curve #	Length	Radius	Delta	Chord Direction	Chord Length
C5	155.86'	500.00'	17°51'36"	S87°25'39"E	155.23'
C6	257.80'	300.00'	49°14'10"	S71°44'22"E	249.94'
C7	252.72'	350.00'	41°22'13"	S67°48'23"E	247.26'

BENCHMARKS

- BM#1 Square Cut on east nose of center island, 50 feet west of 135th Street West and Onewood Street intersection. Elev.=1350.35 NAVD88
- BM#2 Square Cut on northeast corner curb inlet, east side of 135th Street West, 33 feet south of NW 1/4, Sec. 25, T27S, R2W of the 6th P.M. Elev.=1346.29 NAVD88

CENTERLINE TABLE

Line #	Length	Direction
L4	101.97'	N83°38'33"E

**MINIMUM PAD ELEVATIONS
LOWEST OPENINGS**

LOT(S) Inclusive	BLOCK	ELEVATION NAVD88
6-9	1	1333.2
10	1	1328.0
11	1	1326.5
26-28	1	1327.9
29	1	1327.5
30	1	1327.0
31-33	1	1326.6

