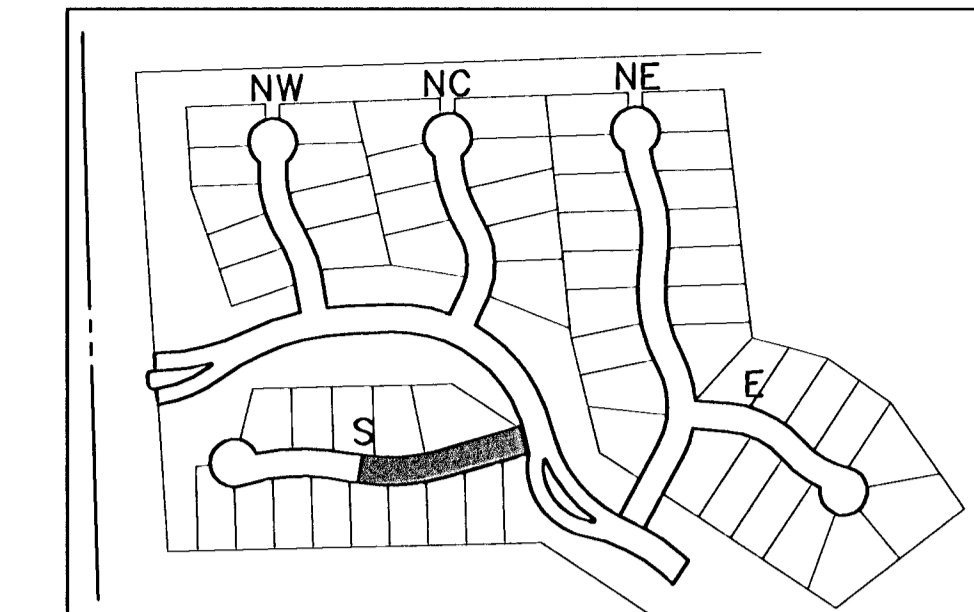
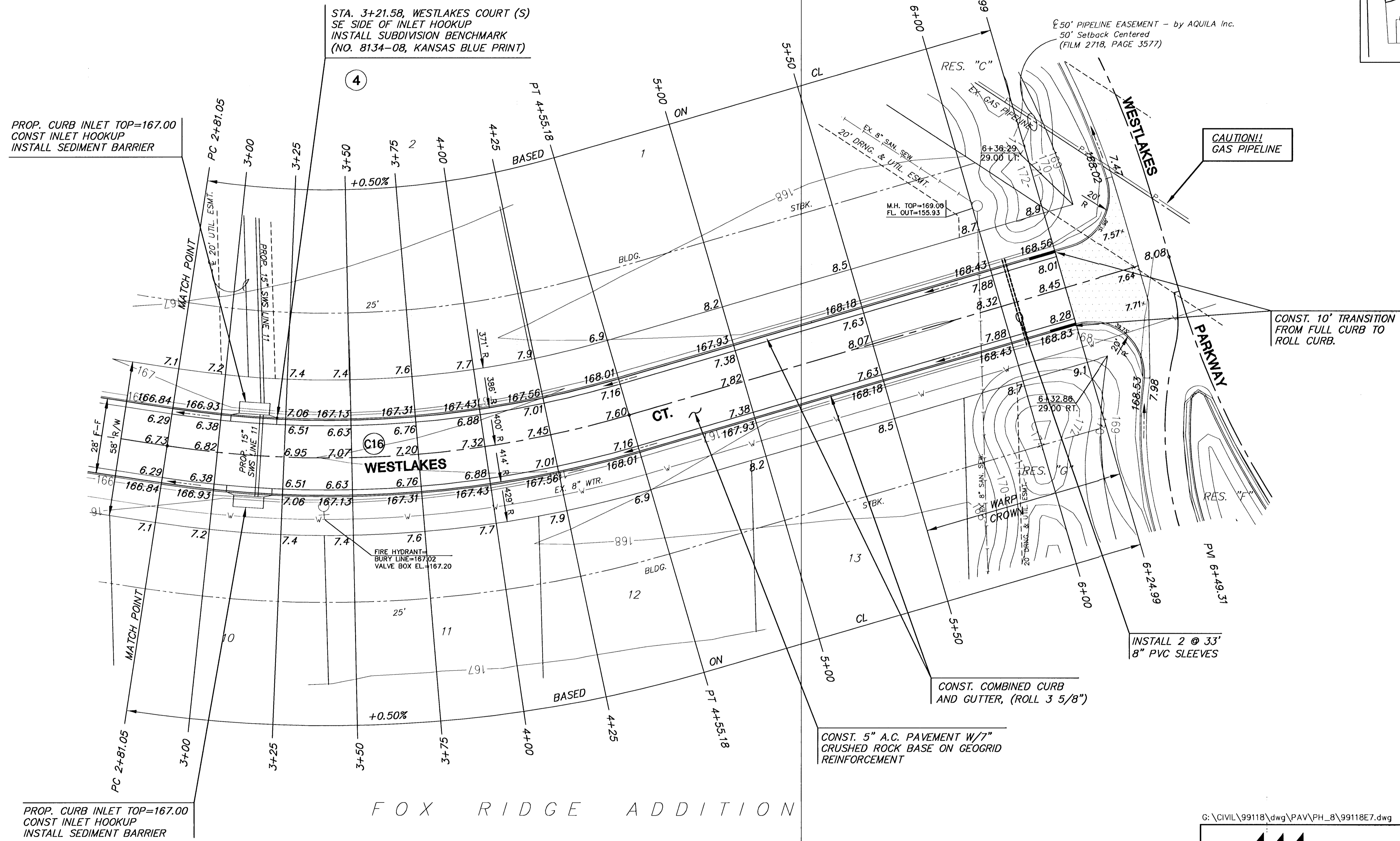


FOX RIDGE ADDITION



LOCATION MAP



PROP. CURB INLET TOP=167.00
CONST INLET HOOKUP
INSTALL SEDIMENT BARRIER

PROP. CURB INLET TOP=167.00
CONST INLET HOOKUP
INSTALL SEDIMENT BARRIER

STA. 3+21.58, WESTLAKES COURT (S)
SE SIDE OF INLET HOOKUP
INSTALL SUBDIVISION BENCHMARK
(NO. 8134-08, KANSAS BLUE PRINT)

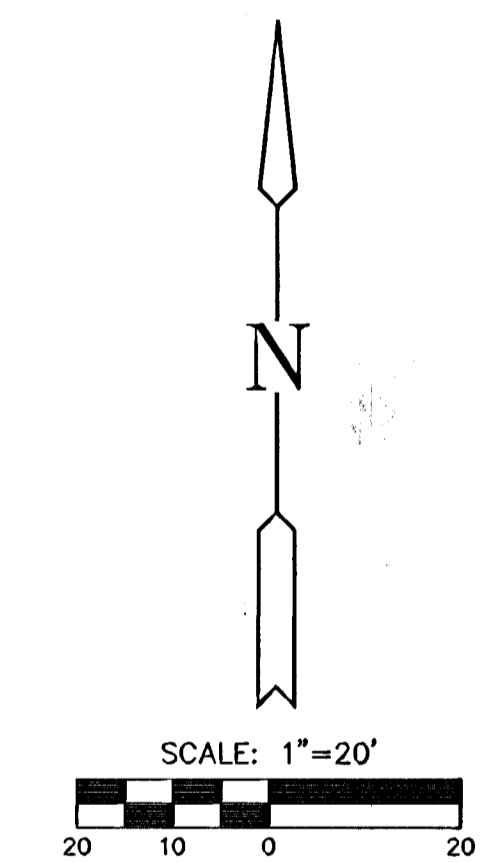
CAUTION!!
GAS PIPELINE

CONST. 10' TRANSITION
FROM FULL CURB TO
ROLL CURB.

INSTALL 2 @ 33'
8" PVC SLEEVES

CONST. COMBINED CURB
AND GUTTER, (ROLL 3 5/8")

CONST. 5" A.C. PAVEMENT W/7"
CRUSHED ROCK BASE ON GEOGRID
REINFORCEMENT



- NOTE:
1. TOP OF CURB ELEVATIONS SHOWN ARE FOR FULL CURB. CONSTRUCT CURB AS NOTED.
 2. CONTRACTOR SHALL REMOVE ALL TREES WITHIN ROAD RIGHT-OF-WAY.
 3. CURVE DATA FOR CURVES LABELED (C#) MAY BE FOUND ON SHEET 4.

G:\CIVIL\99118\dwg\PAV\PH_8\99118E7.dwg

 MKEC ENGINEERING CONSULTANTS 411 N. WEBB ROAD WICHITA, KS. 67206 316-684-9600	FOX RIDGE ADDITION PROJECT NAME		
	WESTLAKES COURT (S) - PHASE 8 SHEET TITLE		
	SS DESIGN BY.	DM DRAWN BY.	GA CHECKED BY.
	SEPTEMBER 2004 DATE	99118E7 JOB NO.	16 / 50 SHEET/OF