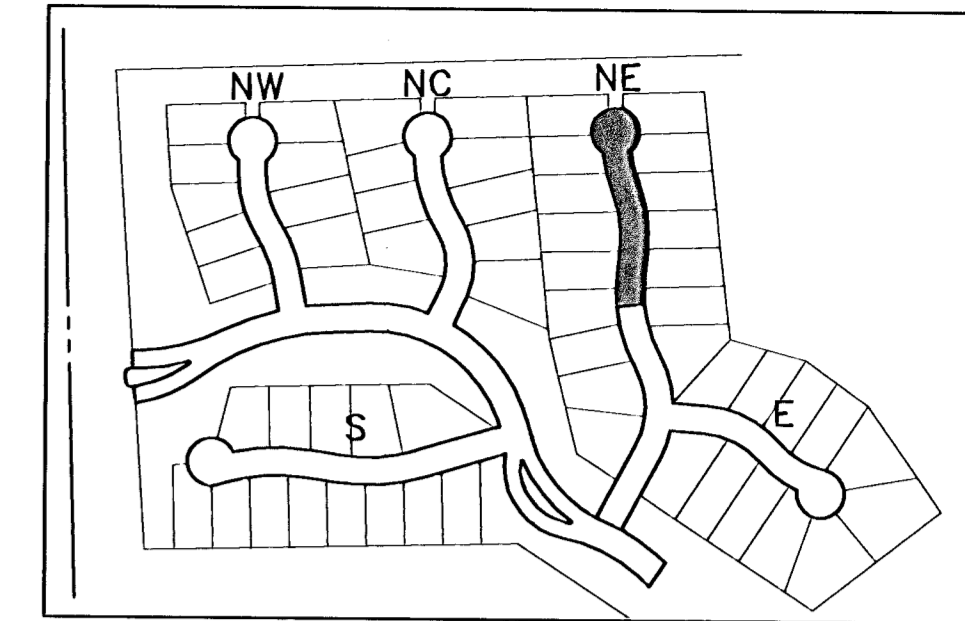


FOX RIDGE ADDITION



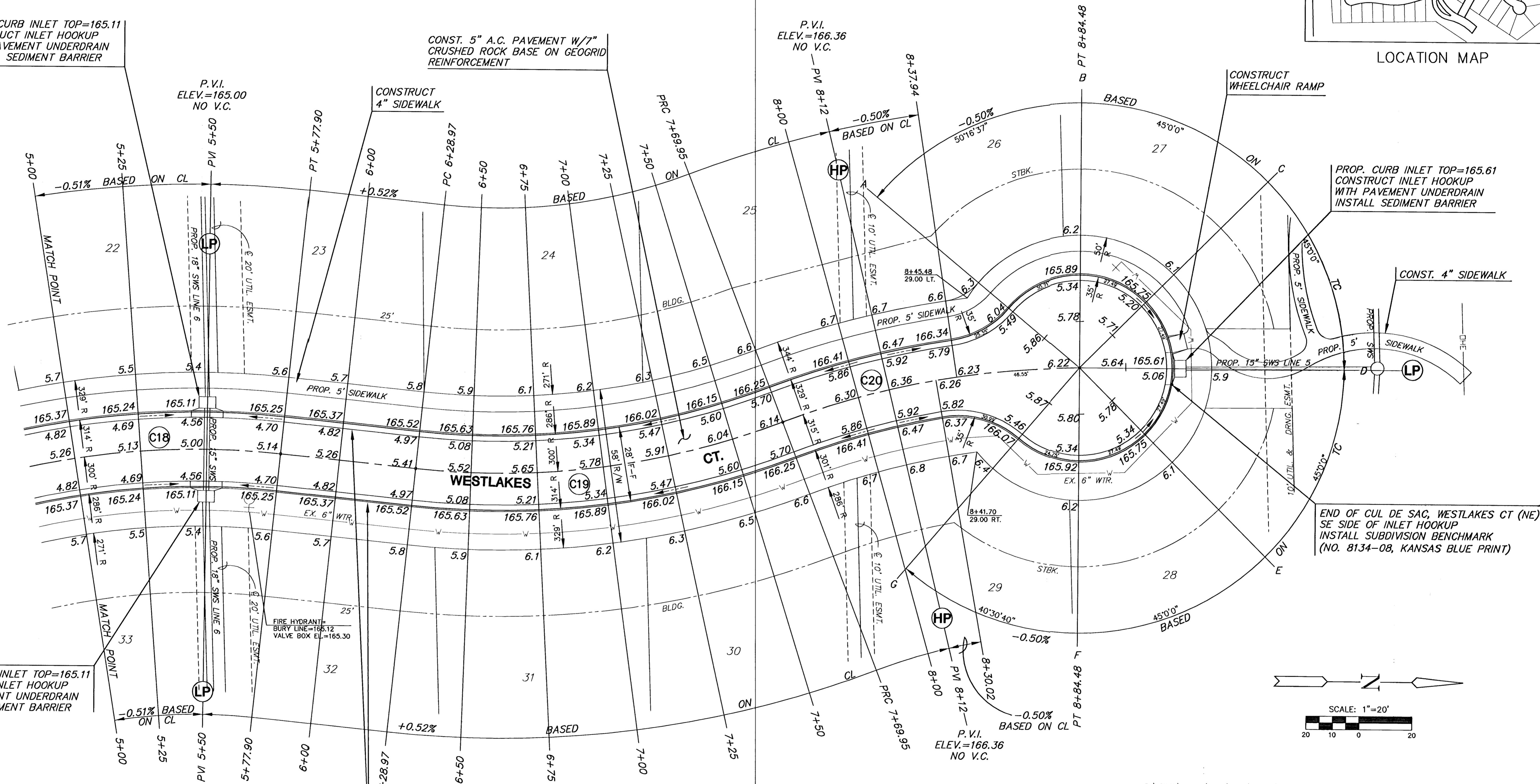
LOCATION MAP

PROP. CURB INLET TOP=165.11
CONSTRUCT INLET HOOKUP
WITH PAVEMENT UNDERDRAIN
INSTALL SEDIMENT BARRIER

CONST. 5" A.C. PAVEMENT W/7"
CRUSHED ROCK BASE ON GEOGRID
REINFORCEMENT

P.V.I.
ELEV.=165.00
NO V.C.

P.V.I.
ELEV.=166.36
NO V.C.



PROP. CURB INLET TOP=165.61
CONSTRUCT INLET HOOKUP
WITH PAVEMENT UNDERDRAIN
INSTALL SEDIMENT BARRIER

CONST. 4" SIDEWALK

END OF CUL DE SAC, WESTLAKES CT (NE)
SE SIDE OF INLET HOOKUP
INSTALL SUBDIVISION BENCHMARK
(NO. 8134-08, KANSAS BLUE PRINT)

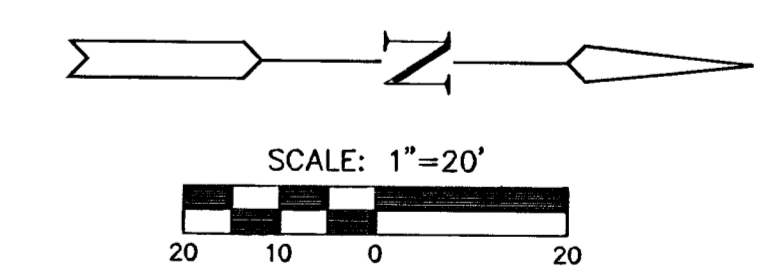
PROP. CURB INLET TOP=165.11
CONSTRUCT INLET HOOKUP
WITH PAVEMENT UNDERDRAIN
INSTALL SEDIMENT BARRIER

P.V.I.
ELEV.=165.00
NO V.C.

P.V.I.
ELEV.=166.36
NO V.C.

FOX RIDGE ADDITION

CONST. COMBINED CURB
AND GUTTER, (ROLL 3 5/8")



- NOTE:
1. TOP OF CURB ELEVATIONS SHOWN ARE FOR FULL CURB. CONSTRUCT CURB AS NOTED.
 2. CONTRACTOR SHALL REMOVE ALL TREES WITHIN ROAD RIGHT-OF-WAY.
 3. CURVE DATA FOR CURVES LABELED (C#) MAY BE FOUND ON SHEET 4.

G:\CIVIL\99118\dwg\PAV\PH_8\99118E4.dwg

<p>MKEC ENGINEERING CONSULTANTS 411 N. WEBB ROAD WICHITA, KS. 67206 316-684-9600</p>	<p>FOX RIDGE ADDITION PROJECT NAME</p>		
	<p>WESTLAKES COURT (NE) - PHASE 8 SHEET TITLE</p>		
	<p>SS DESIGN BY:</p>	<p>DM DRAWN BY:</p>	<p>GA CHECKED BY:</p>
	<p>SEPTEMBER 2004 DATE</p>	<p>99118E4 JOB NO.</p>	<p>17 / 50 SHEET/OF</p>