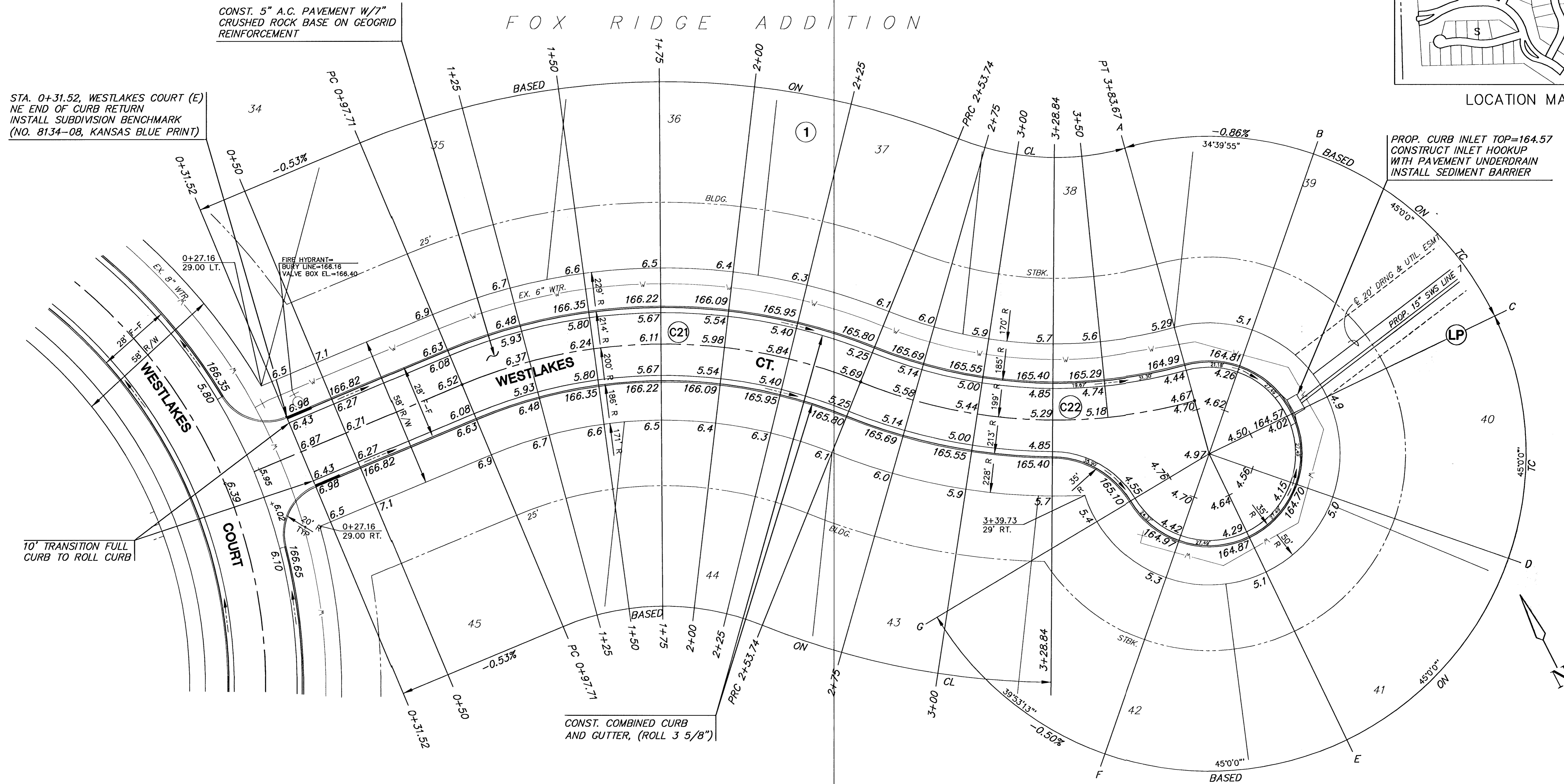


LOCATION MAP

FOX RIDGE ADDITION



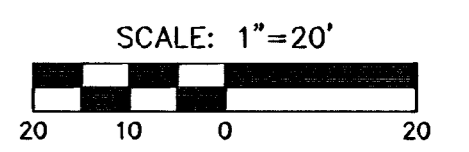
STA. 0+31.52, WESTLAKES COURT (E)
NE END OF CURB RETURN
INSTALL SUBDIVISION BENCHMARK
(NO. 8134-08, KANSAS BLUE PRINT)

CONST. 5" A.C. PAVEMENT W/7"
CRUSHED ROCK BASE ON GEOGRID
REINFORCEMENT

PROP. CURB INLET TOP=164.57
CONSTRUCT INLET HOOKUP
WITH PAVEMENT UNDERDRAIN
INSTALL SEDIMENT BARRIER

10' TRANSITION FULL
CURB TO ROLL CURB

CONST. COMBINED CURB
AND GUTTER, (ROLL 3 5/8")



FOX RIDGE ADDITION

G:\CIVIL\99118\dwg\PAV\PH_B\99118E5.dwg

- NOTE:
1. TOP OF CURB ELEVATIONS SHOWN ARE FOR FULL CURB. CONSTRUCT CURB AS NOTED.
 2. CONTRACTOR SHALL REMOVE ALL TREES WITHIN ROAD RIGHT-OF-WAY.
 3. CURVE DATA FOR CURVES LABELED (C#) MAY BE FOUND ON SHEET 4.



FOX RIDGE ADDITION		
PROJECT NAME		
WESTLAKES COURT (E) - PHASE 8		
SHEET TITLE		
SS	DM	CA
DESIGN BY:	DRAWN BY:	CHECKED BY:
SEPTEMBER 2004	99118E5	18 / 50
DATE	JOB NO.	SHEET/OF